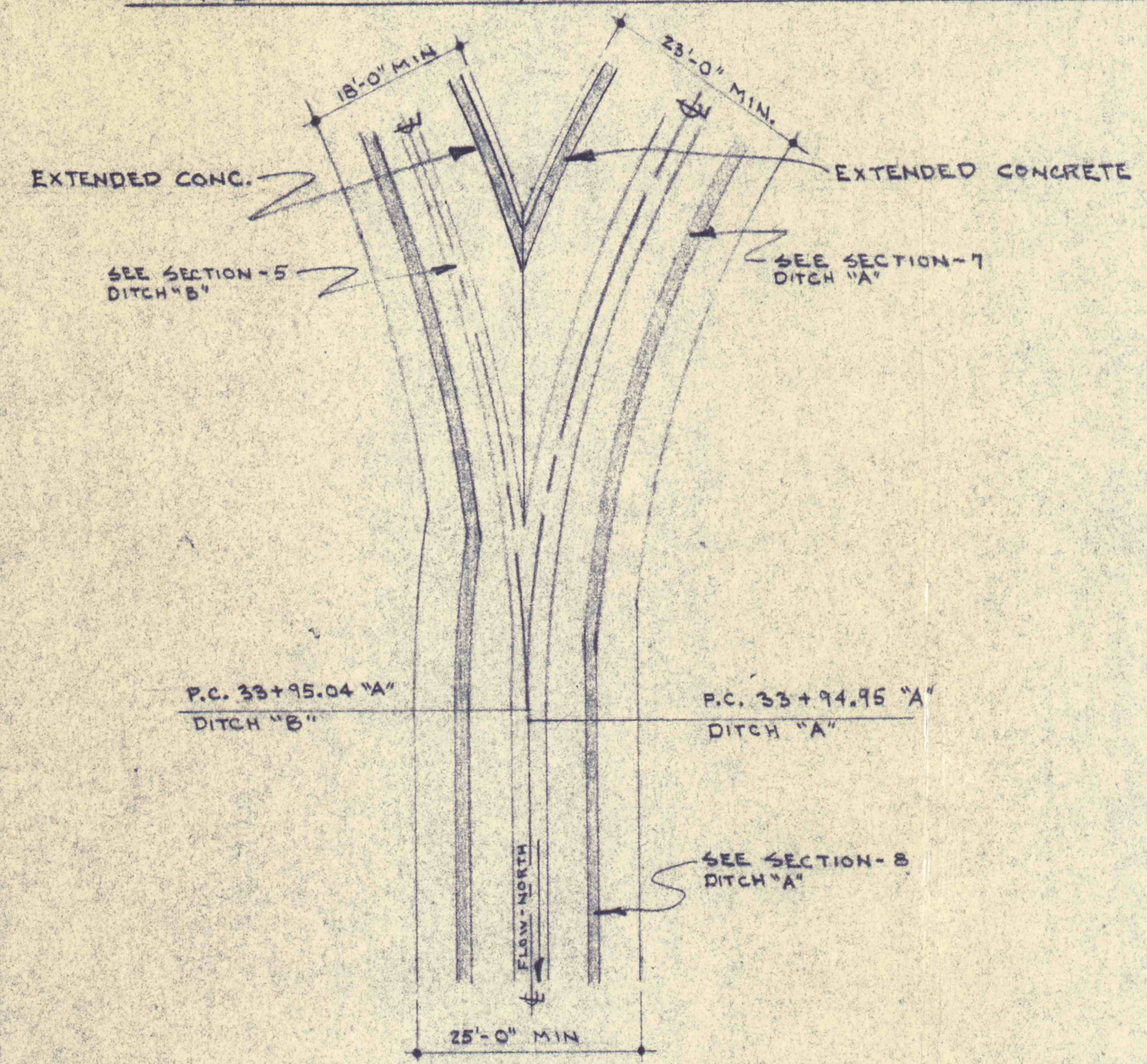
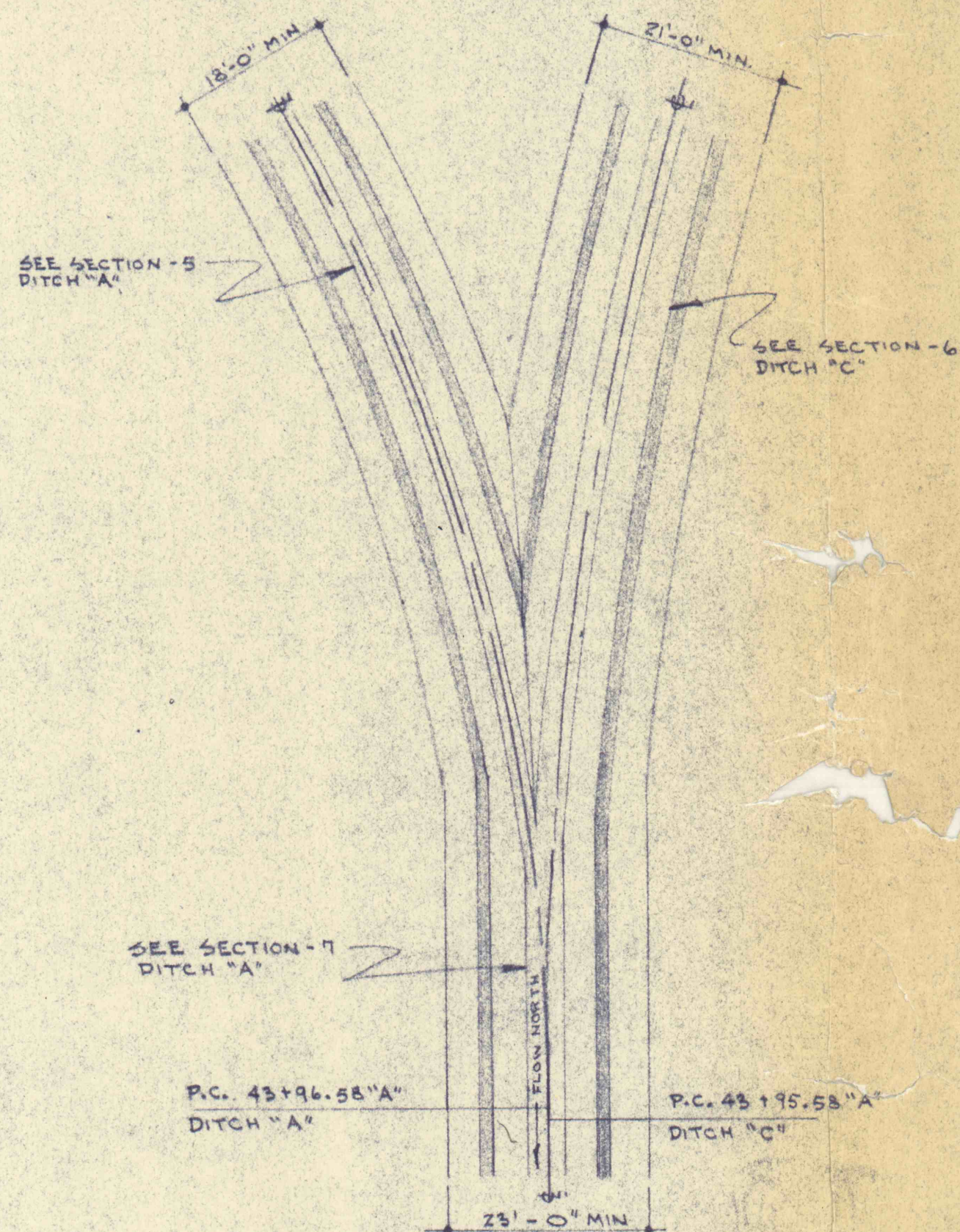


DETAIL OF EXISTING CULVERT AT PAVED ACCESS RD. ON DITCH-A - (H)  
SCALE - 1/16" = 1'-0"

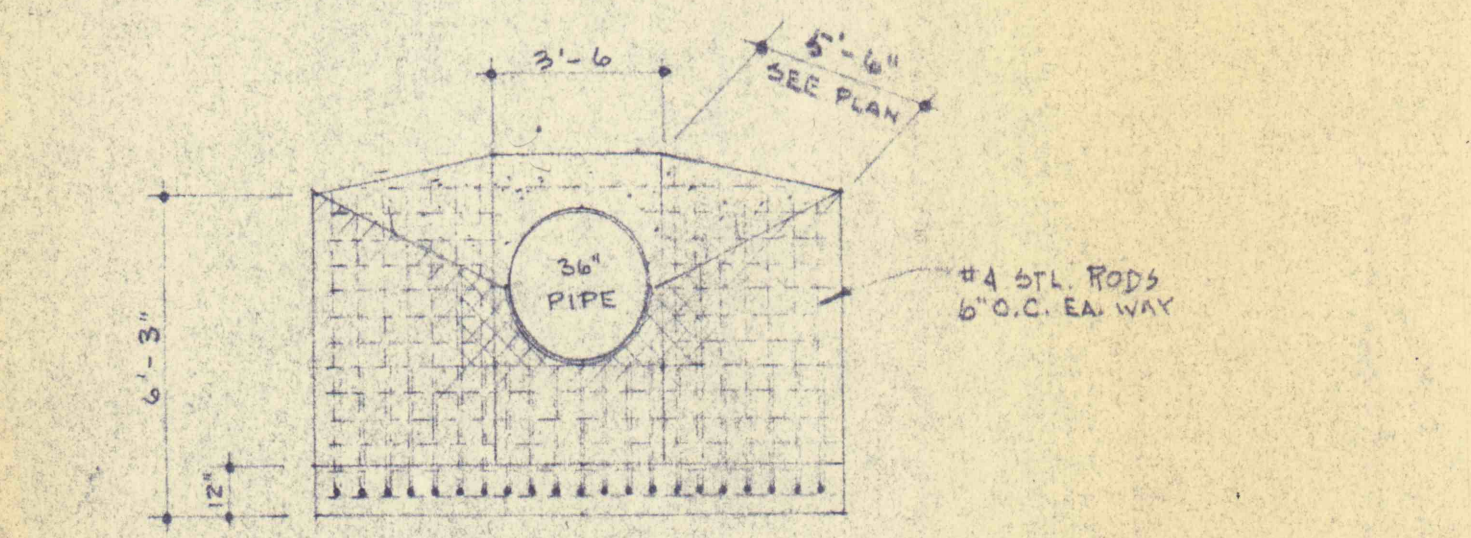
DETAIL OF EXISTING CULVERT ON ROUTE #901 (DITCH-A) - (I)  
SCALE - 1/16" = 1'-0"



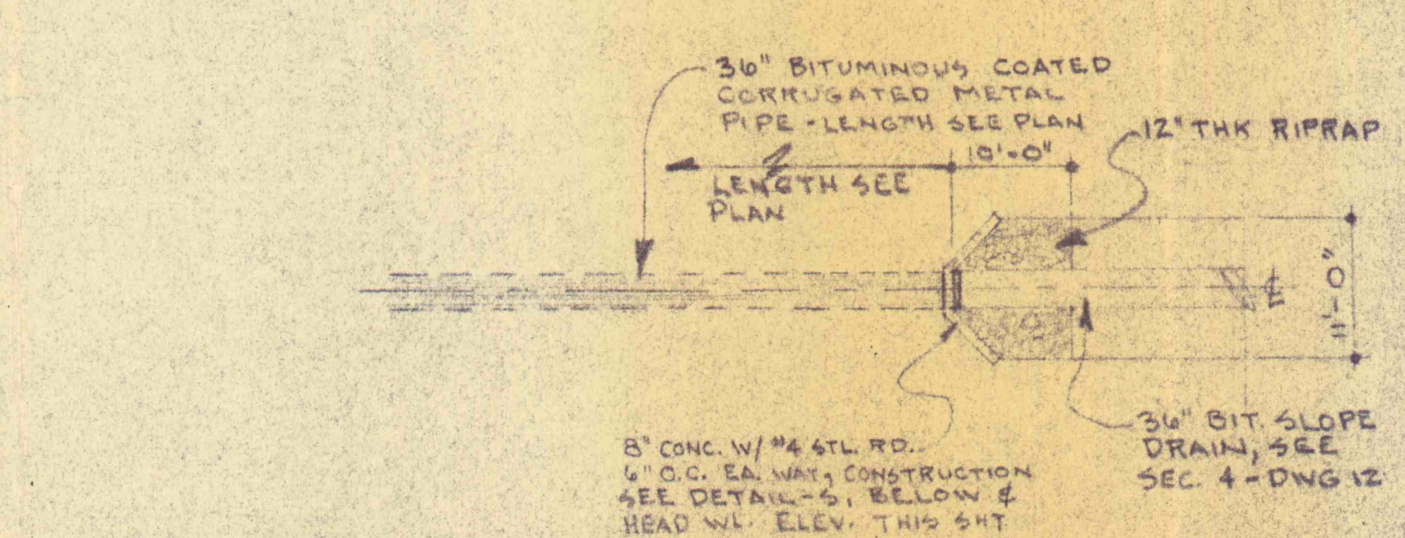
DETAIL OF CONNECTION DITCHES "A" & "B" - (J)  
SCALE - 1/16" = 1'-0"



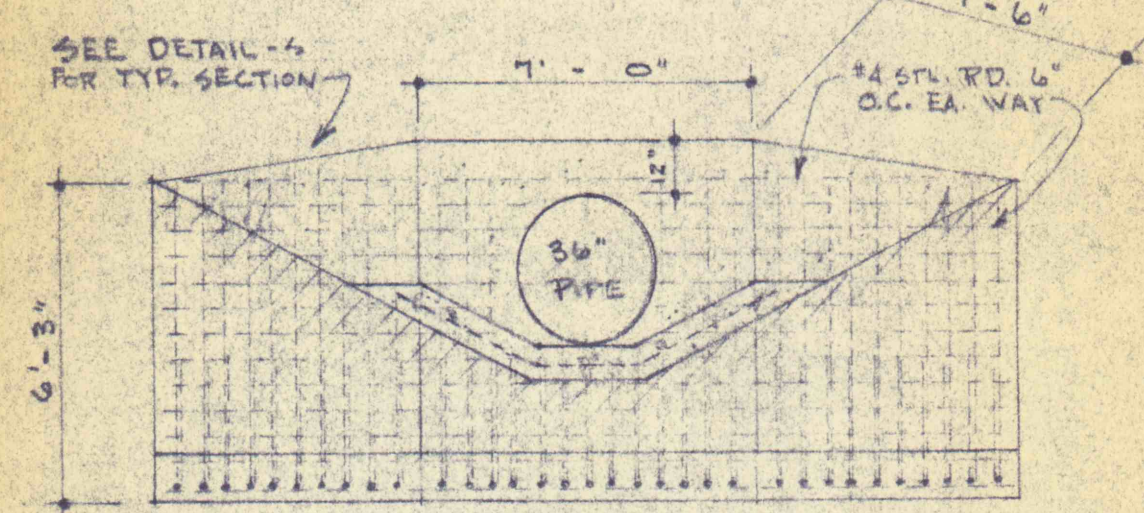
DETAIL OF CONNECTION DITCH "A" WITH DITCH "C" - (K)  
SCALE - 1/16" = 1'-0"



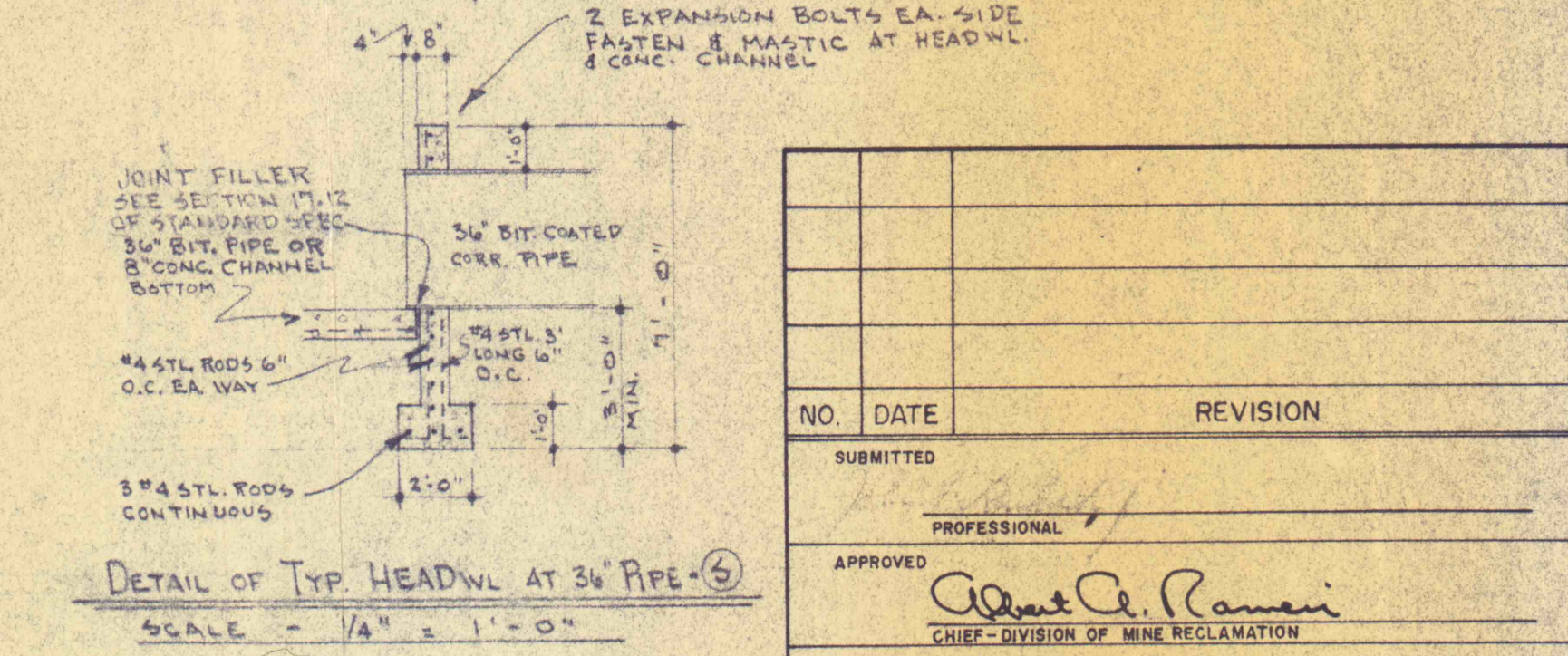
HEADWL. ELEV. FOR 36" PIPE AT 36" BIT. FLUME (DETAIL-M&Q)  
SCALE - 1/4" = 1'-0"



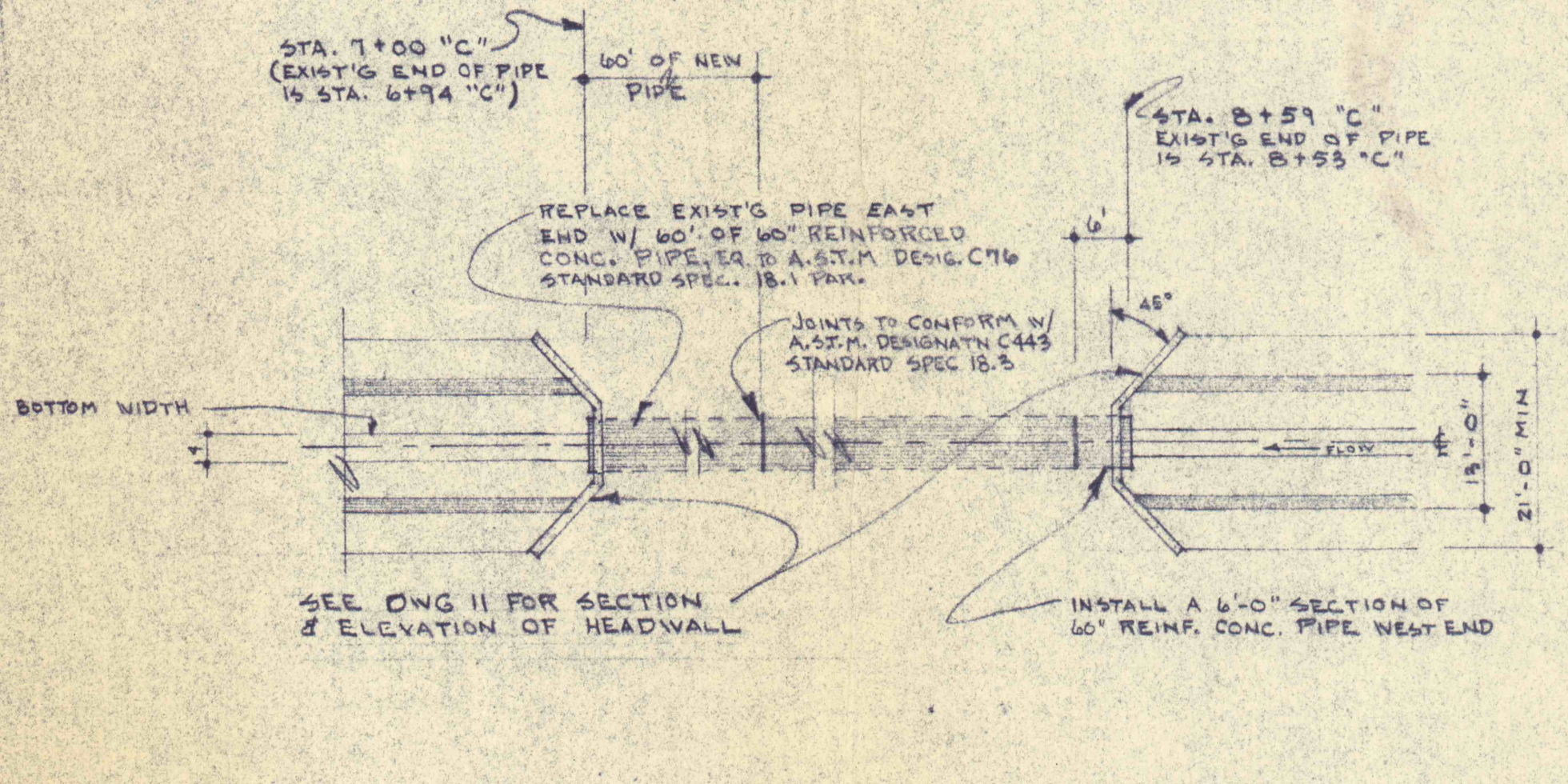
DETAIL OF 36" PIPE ON DITCH "A" - (M)  
SCALE - 1/16" = 1'-0"



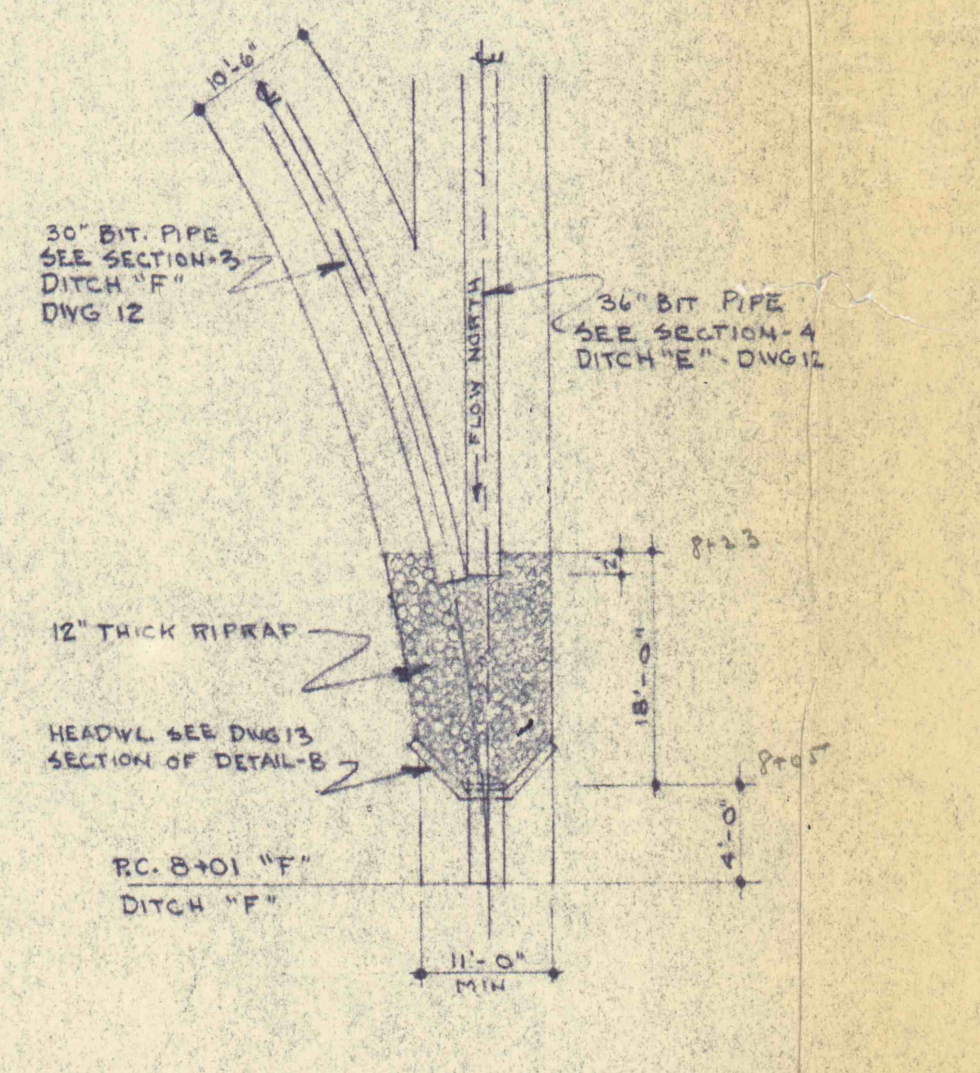
HEADWL. DETAIL FOR 36" PIPE DITCH "B" - (N)  
SCALE - 1/4" = 1'-0"



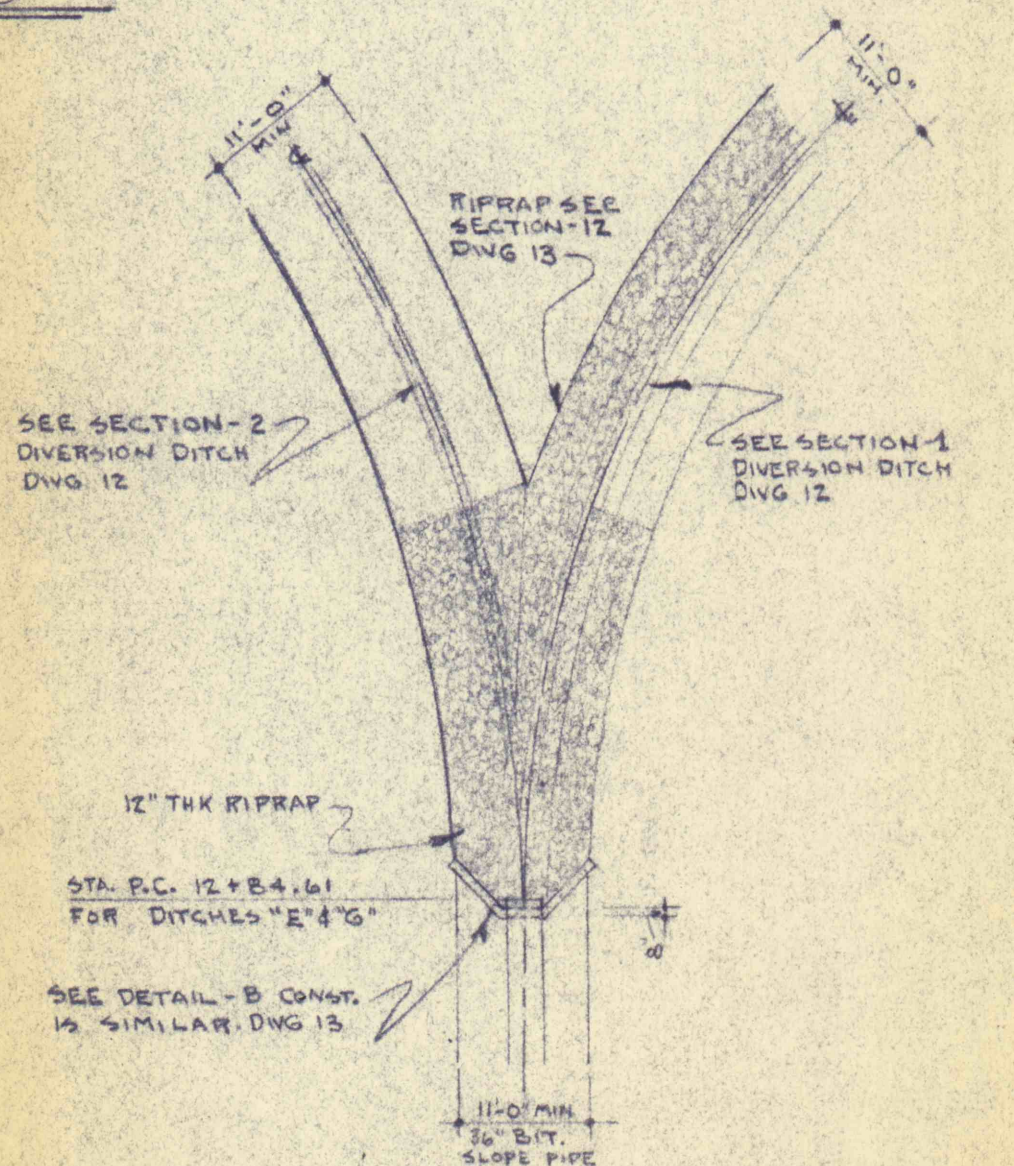
DETAIL OF TYP. HEADWL AT 36" PIPE - (O)  
SCALE - 1/4" = 1'-0"



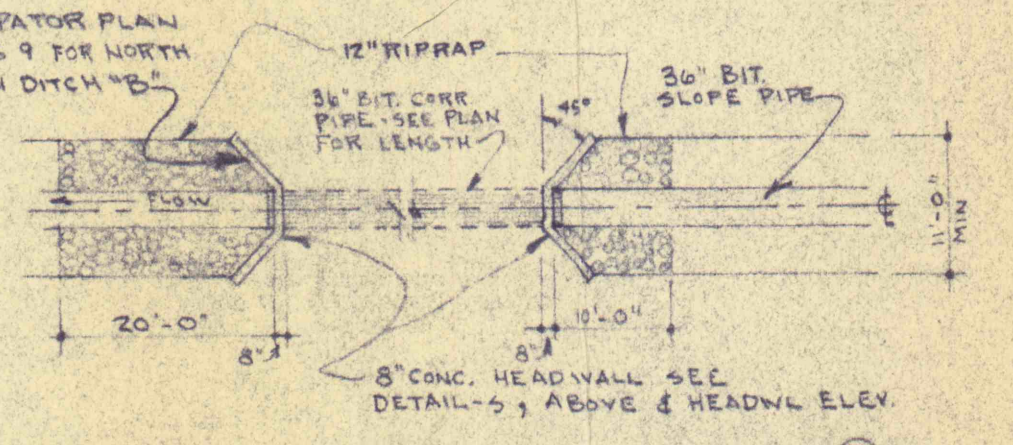
DETAIL OF 60" PIPE ON DITCH "C" - (P)  
SCALE - 1/16" = 1'-0"



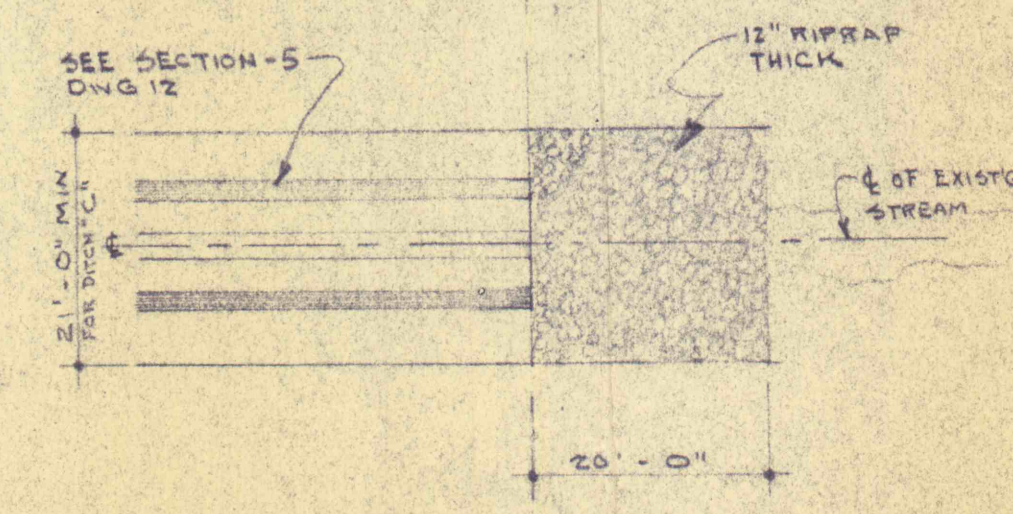
DETAIL OF CONN. DITCH "E" W/ "F" - (Q)  
SCALE - 1/16" = 1'-0"



DETAIL OF CONN. DITCHES "E" & "G" - (R)  
SCALE - 1/16" = 1'-0"



DETAIL OF 36" PIPE ON DITCH "B" & "E" - (S)  
SCALE - 1/16" = 1'-0"



DETAIL AT END OF DITCH "C" - (T)  
SCALE - 1/16" = 1'-0"

NO.	DATE	REVISION	APPR.

COMMONWEALTH OF PENNSYLVANIA  
DEPARTMENT OF ENVIRONMENTAL RESOURCES  
OFFICE OF RESOURCES MANAGEMENT

PROJECT NO. SL 113-2

MINE DRAINAGE POLLUTION ABATEMENT  
QUICK STARTS E, F and G  
SHAMOKIN CREEK WATERSHED

JOHN S. LUCKENS ASSOC.  
P. O. Box 190 Shamokin, Penna.

**DETAILS**

DRAWN BY	DATE	DRAWING NO.
CHECKED BY	SCALE	As Shown