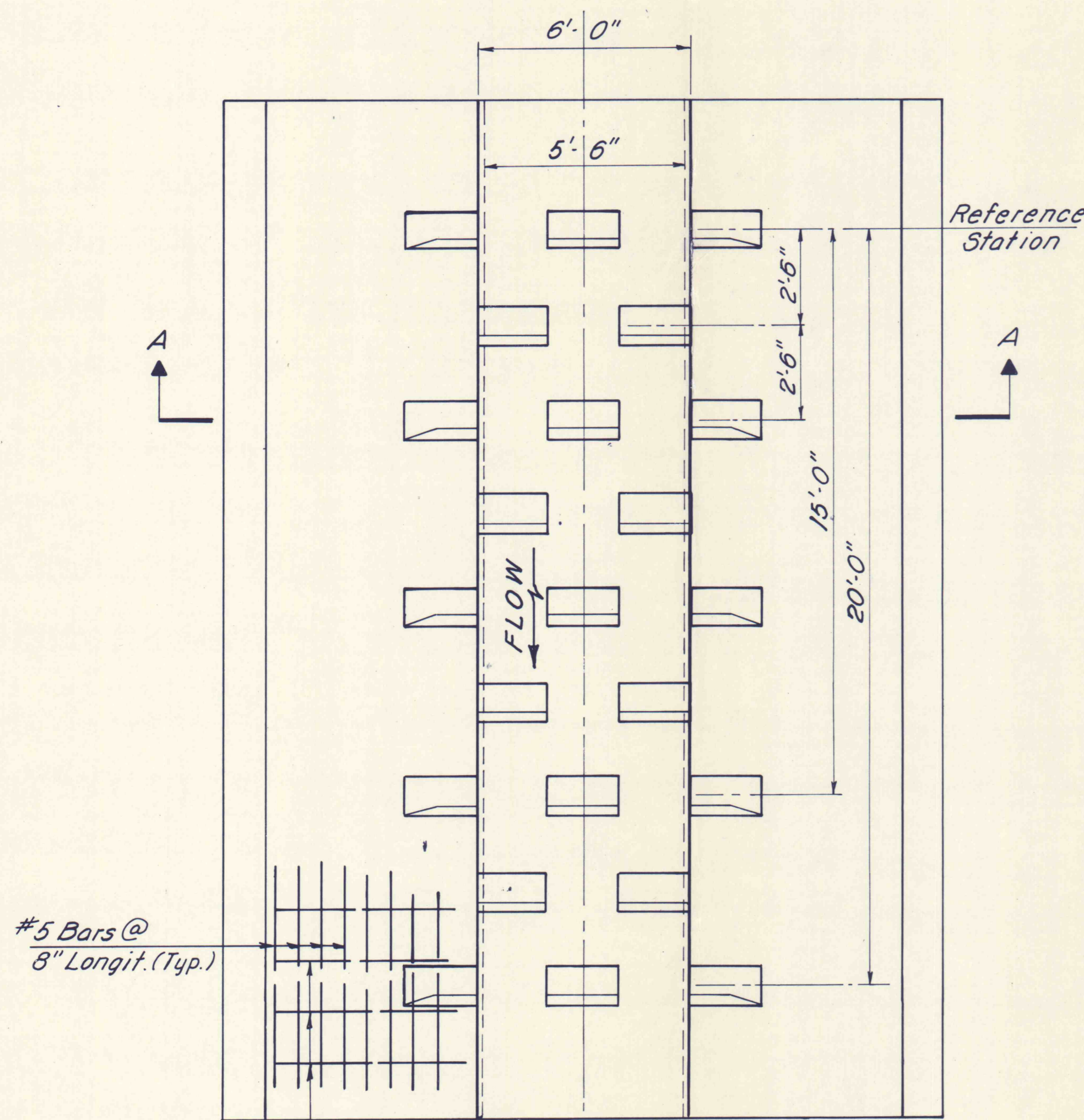


SECTION A-A

NOTE: See Sheet 7 for Slope Protection.

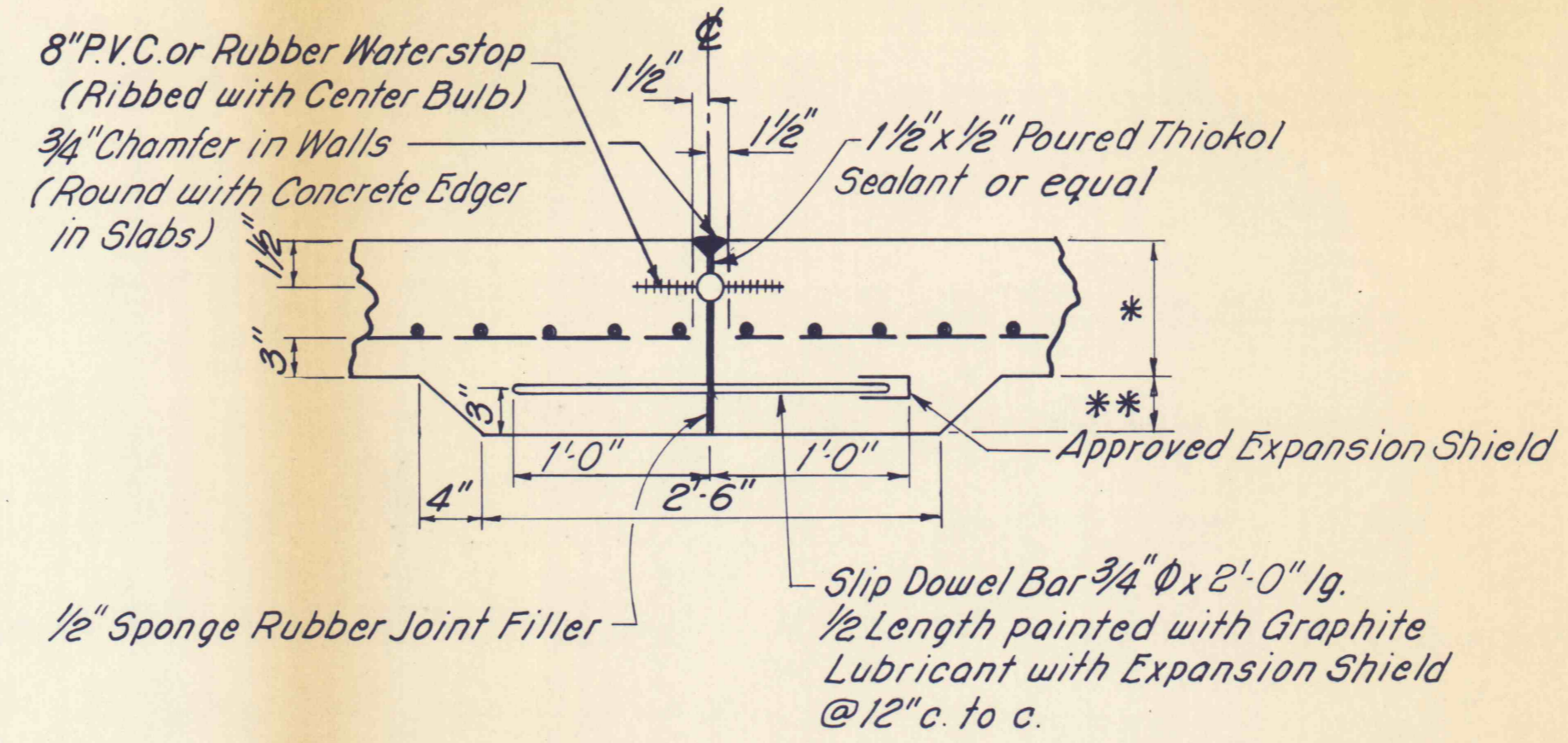


DETAIL ENERGY DISSIPATING UNIT

Scale: 1" = 3'-0"

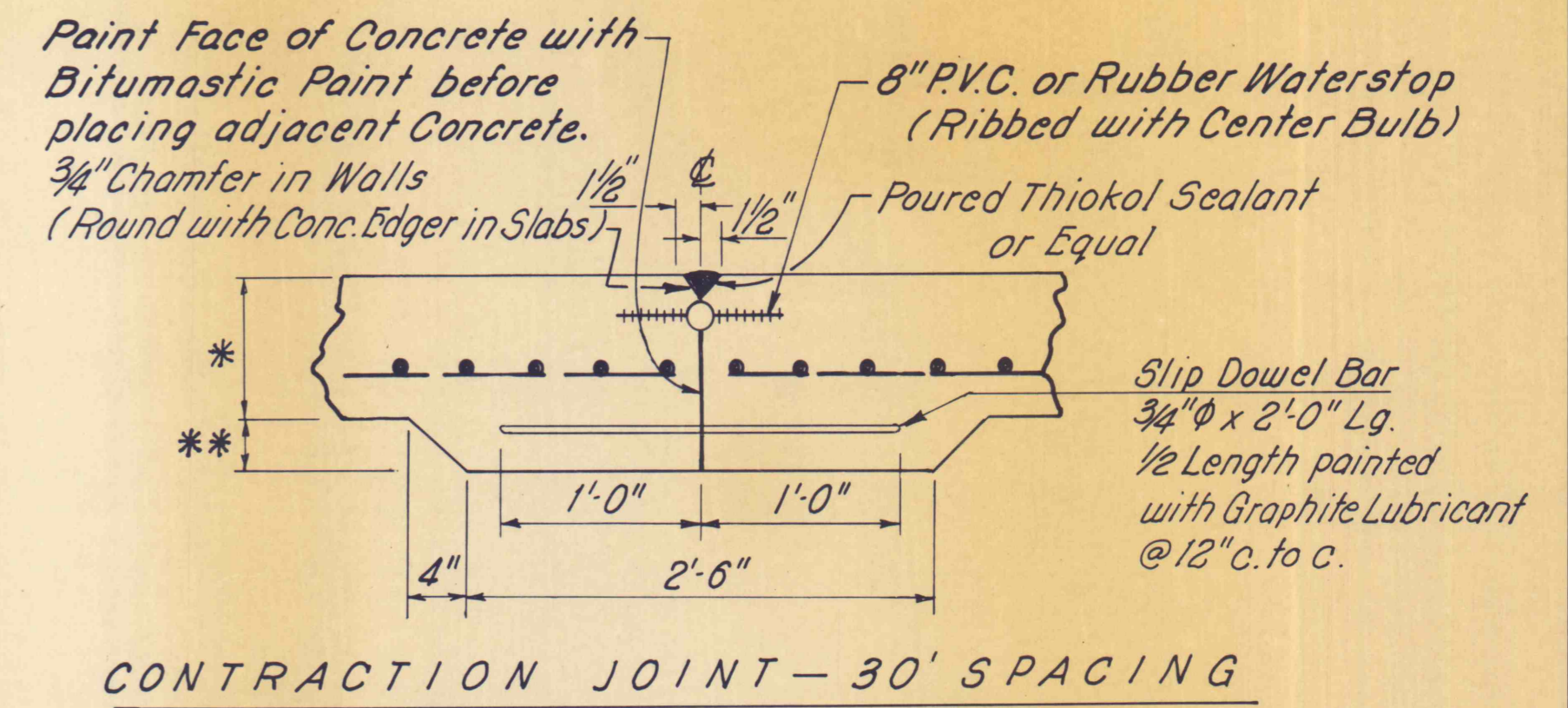
#5 Bars @ 8" Longit. (Typ.)

#5 Bars @ 18" Trans. (Typ.)



EXPANSION JOINT - 90' SPACING

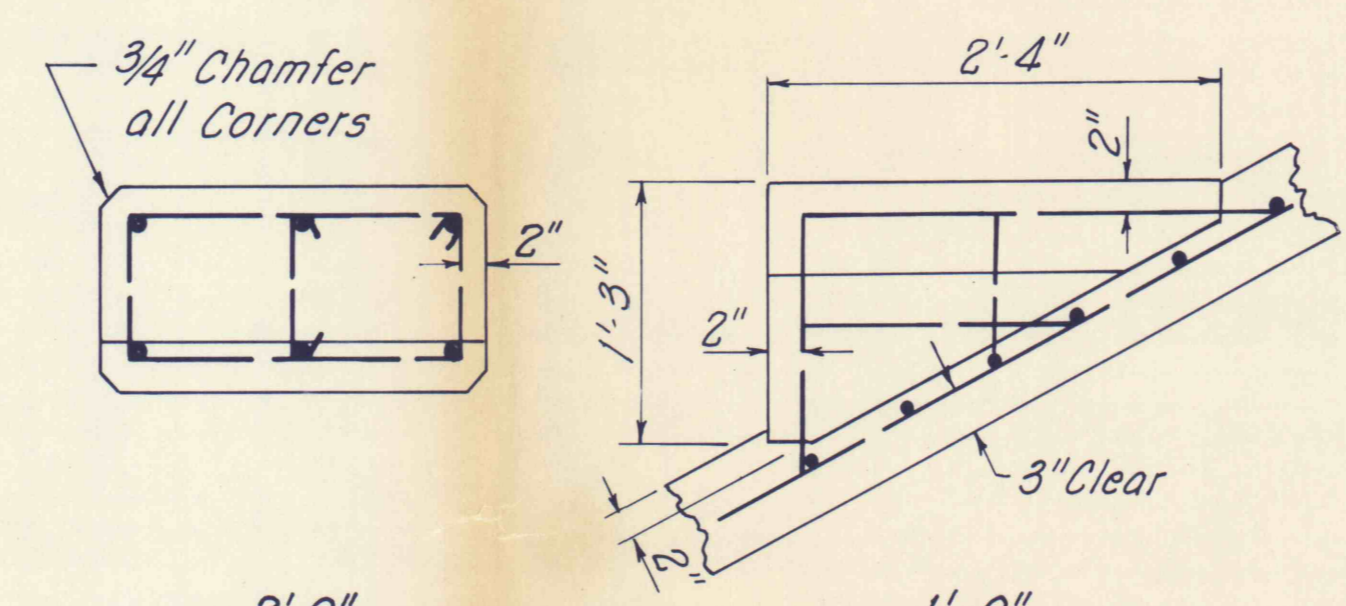
Not to Scale



CONTRACTION JOINT - 30' SPACING

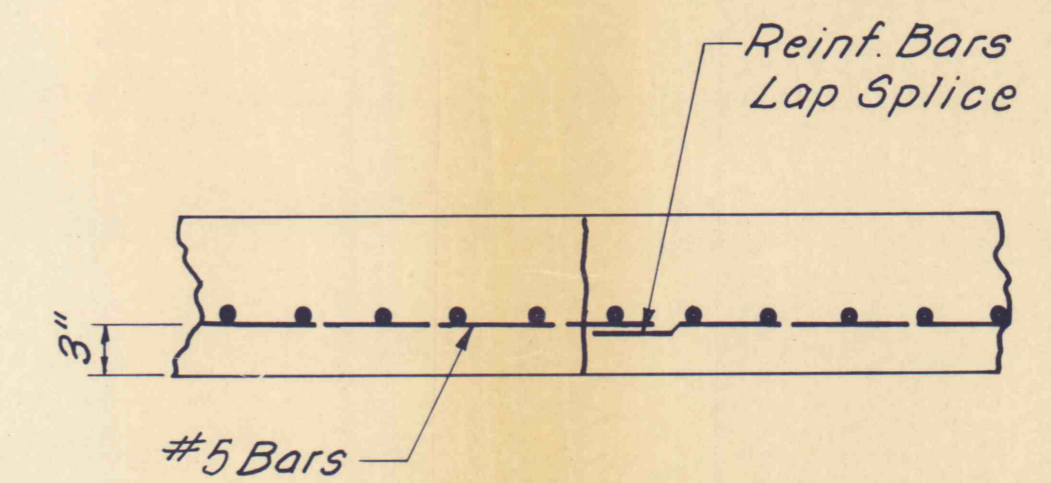
Not to Scale

NOTES: * Slab Depth consists of 8" at Bottom and 6" on Flume Side.
* 2" Thickness @ 8" Base; 4" Thickness @ 6" Side Slope.



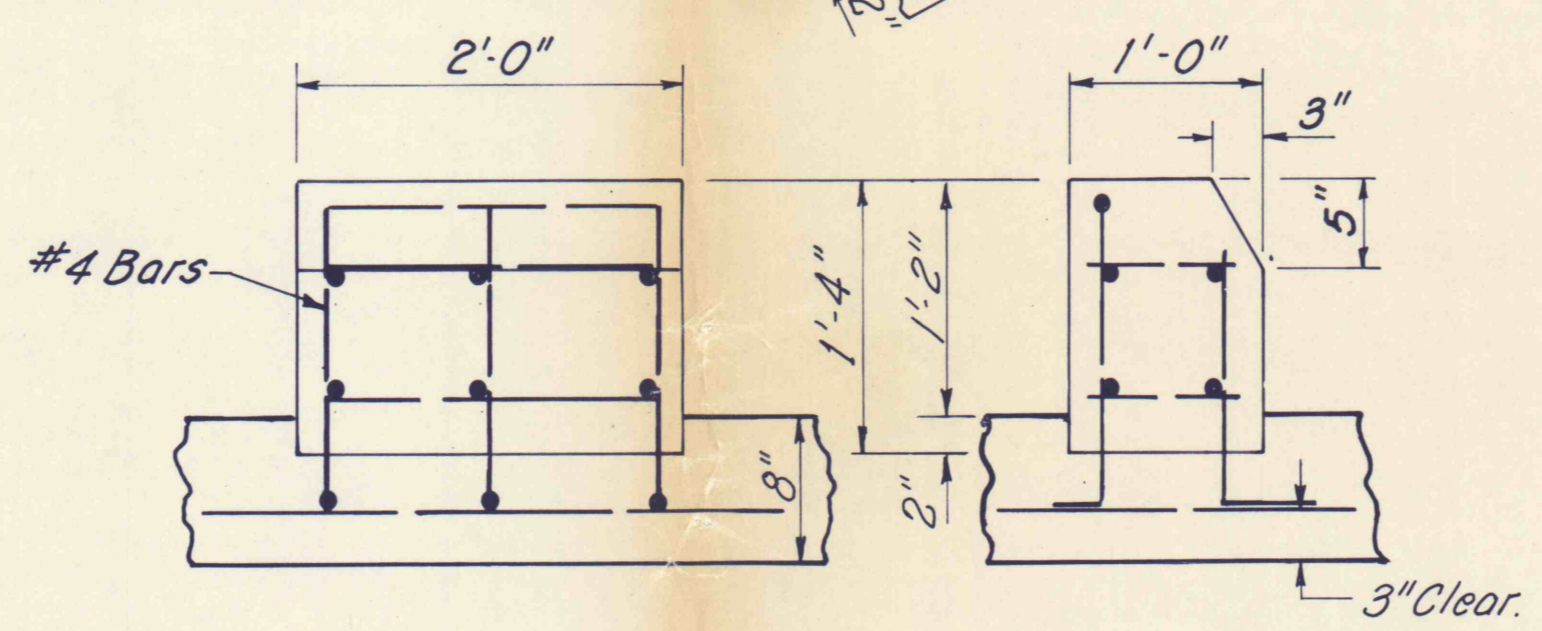
DETAIL Baffle Block for Energy Dissipating Unit

Not to Scale



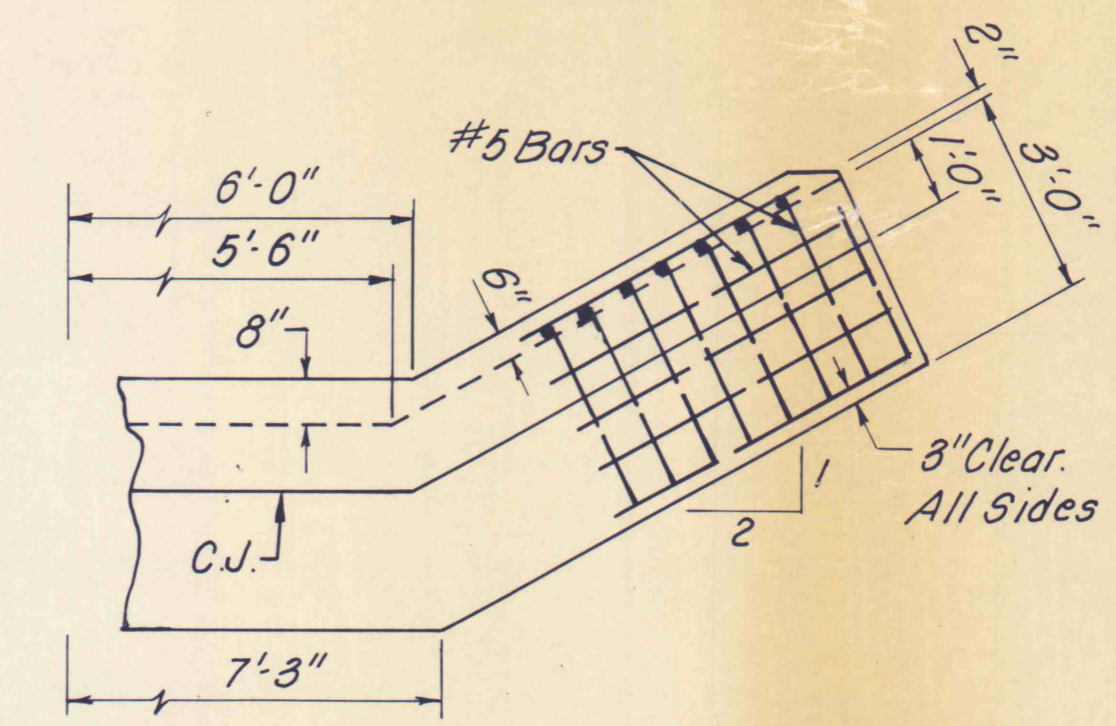
CONSTRUCTION JOINT - AS REQUIRED

Not to Scale



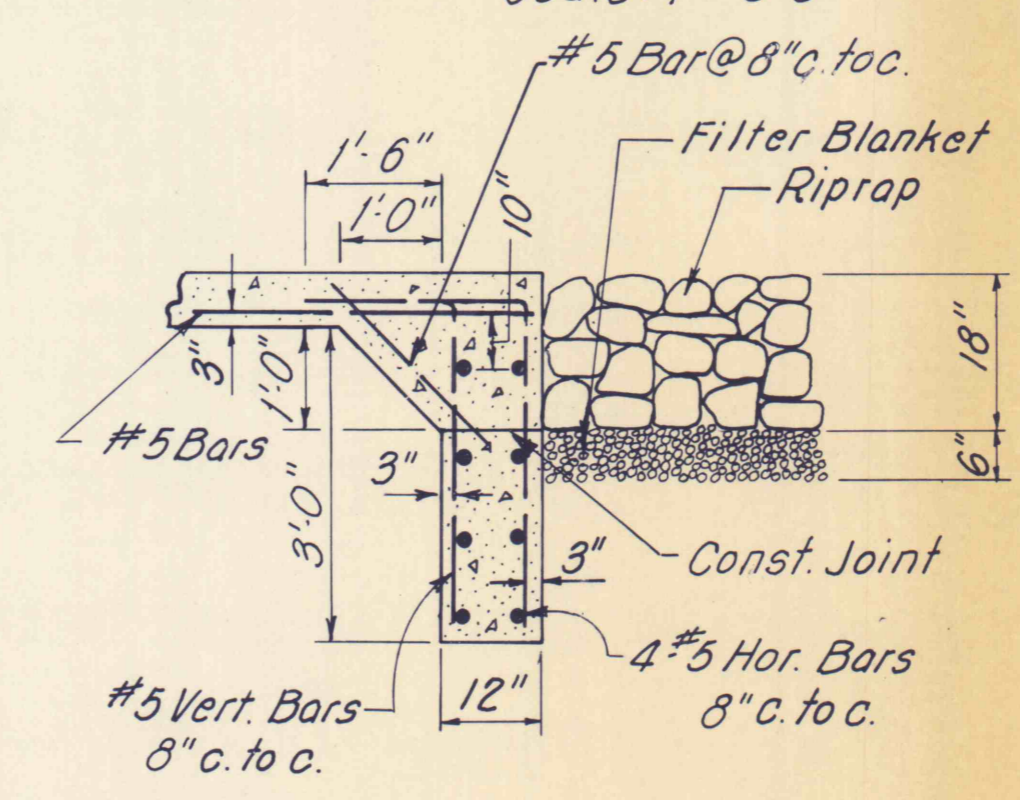
DETAIL Baffle Block for Energy Dissipating Unit

Not to Scale



CUTOFF WALL SECTION

Scale: 1" = 3'-0"



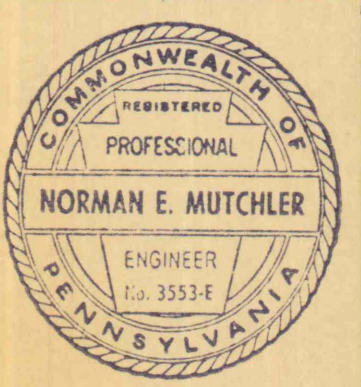
CUTOFF WALL STA. 23+50

Not to Scale

Energy Dissipating Unit Reference Stations
33 + 55 *
32 + 20
31 + 30
30 + 40
29 + 50
28 + 60
27 + 70
26 + 80
26 + 10
25 + 40
24 + 70
24 + 00

* 15 L.F. Unit at Station 33+55. All others 20 L.F.

NO	DATE	REVISION	APPR.
SUBMITTED			
APPROVED			
APPROVED			



COMMONWEALTH OF PENNSYLVANIA
DEPARTMENT OF ENVIRONMENTAL RESOURCES
OFFICE OF RESOURCES MANAGEMENT

PROJECT NO. SL 126-2-9

MINE DRAINAGE
POLLUTION ABATEMENT
MARTINS RUN
SWATARA CREEK WATERSHED
SCHUYLKILL COUNTY

BERGER ASSOCIATES, INC.
Consulting Engineers

P.O. Box 1943 Harrisburg, Penna.

FLUME DETAILS

DRAWN BY	DATE	DRAWING NO.
J S	JULY 8, 1974	
CHECKED BY	SCALE	
M W	AS SHOWN	10 OF 11