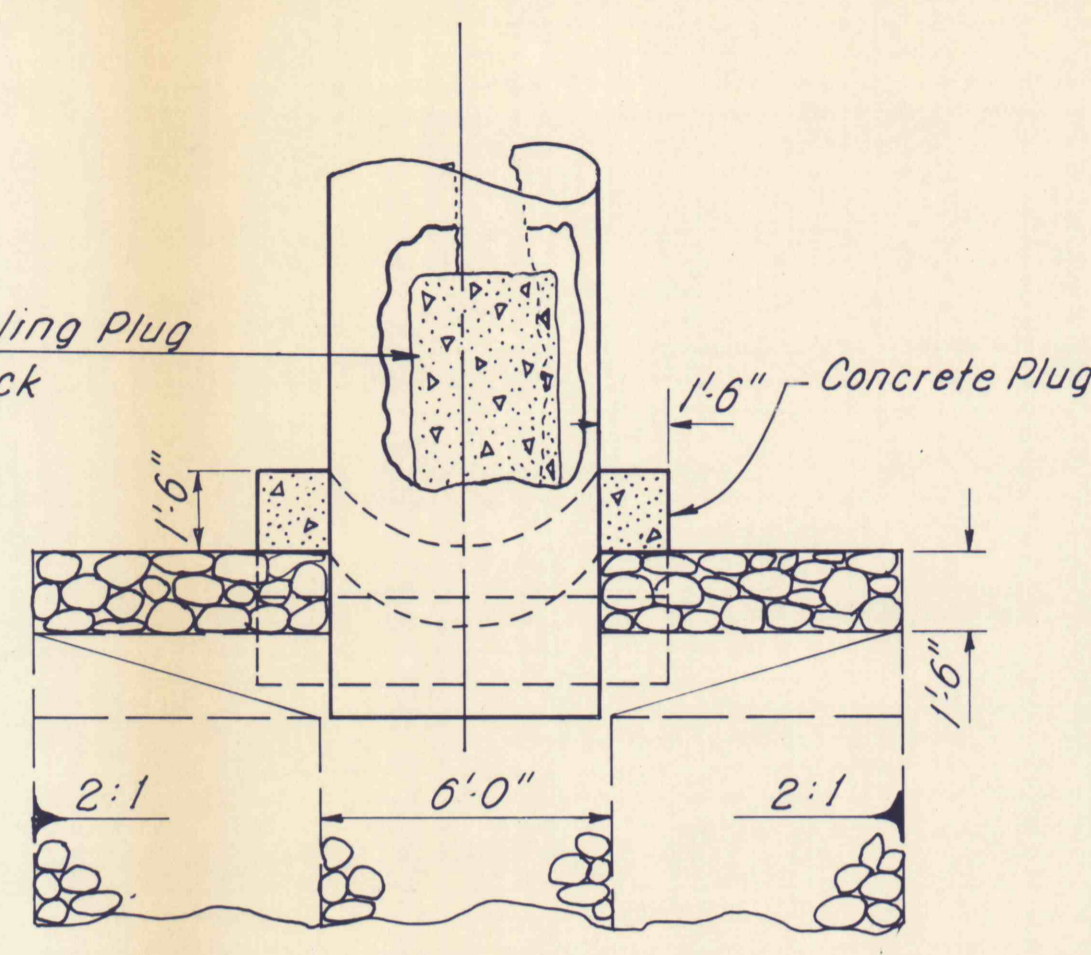


NOTE: 1 1/2:1 Slopes on the Uphill Side may be used in Areas designated by the Engineer when the Terrain will not permit use of 2:1 Slopes.

TYPICAL DETAIL FOR SEEDING & JUTE MATTING DIVERSION DITCH

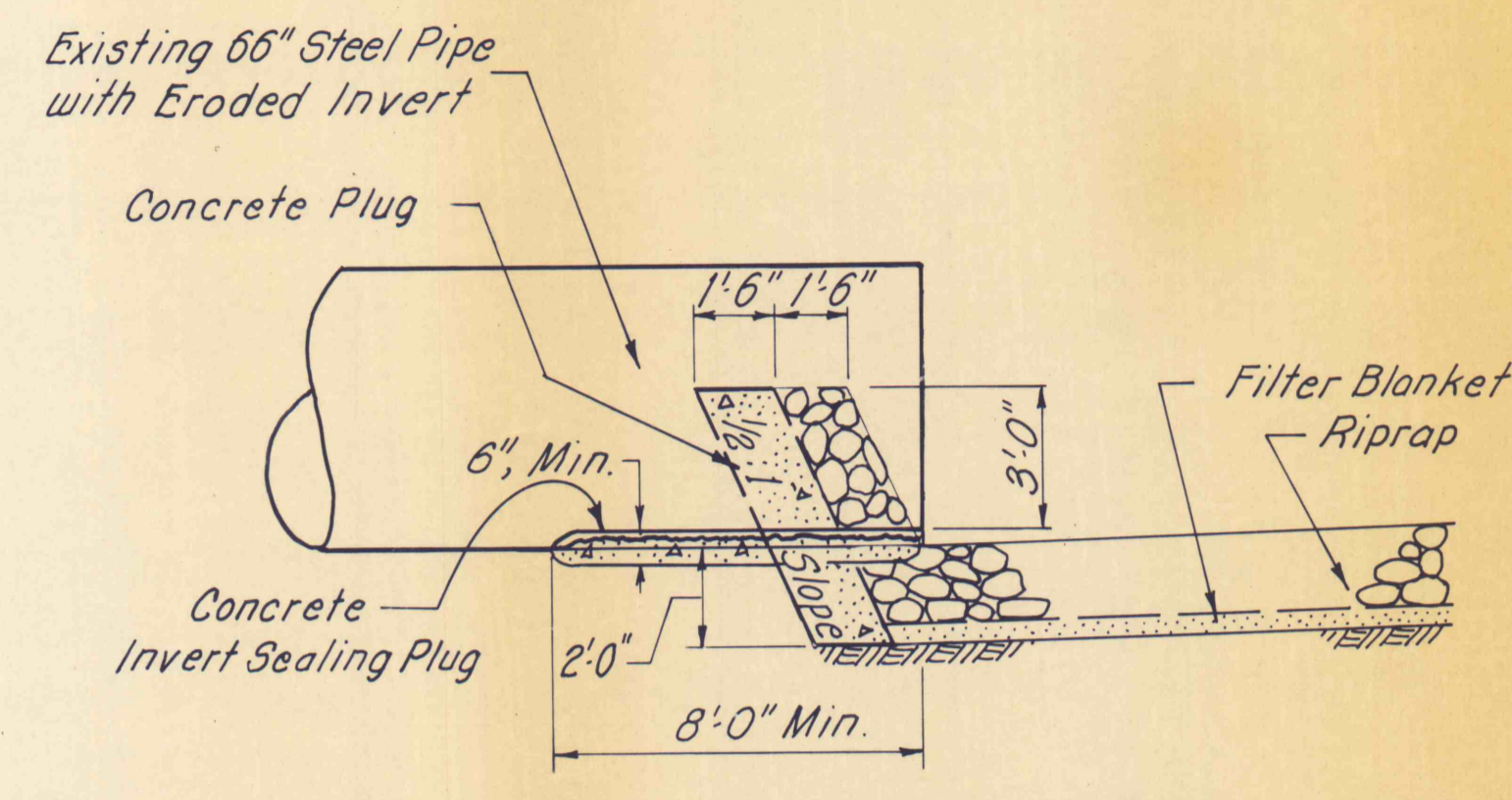
Not to Scale



PLAN

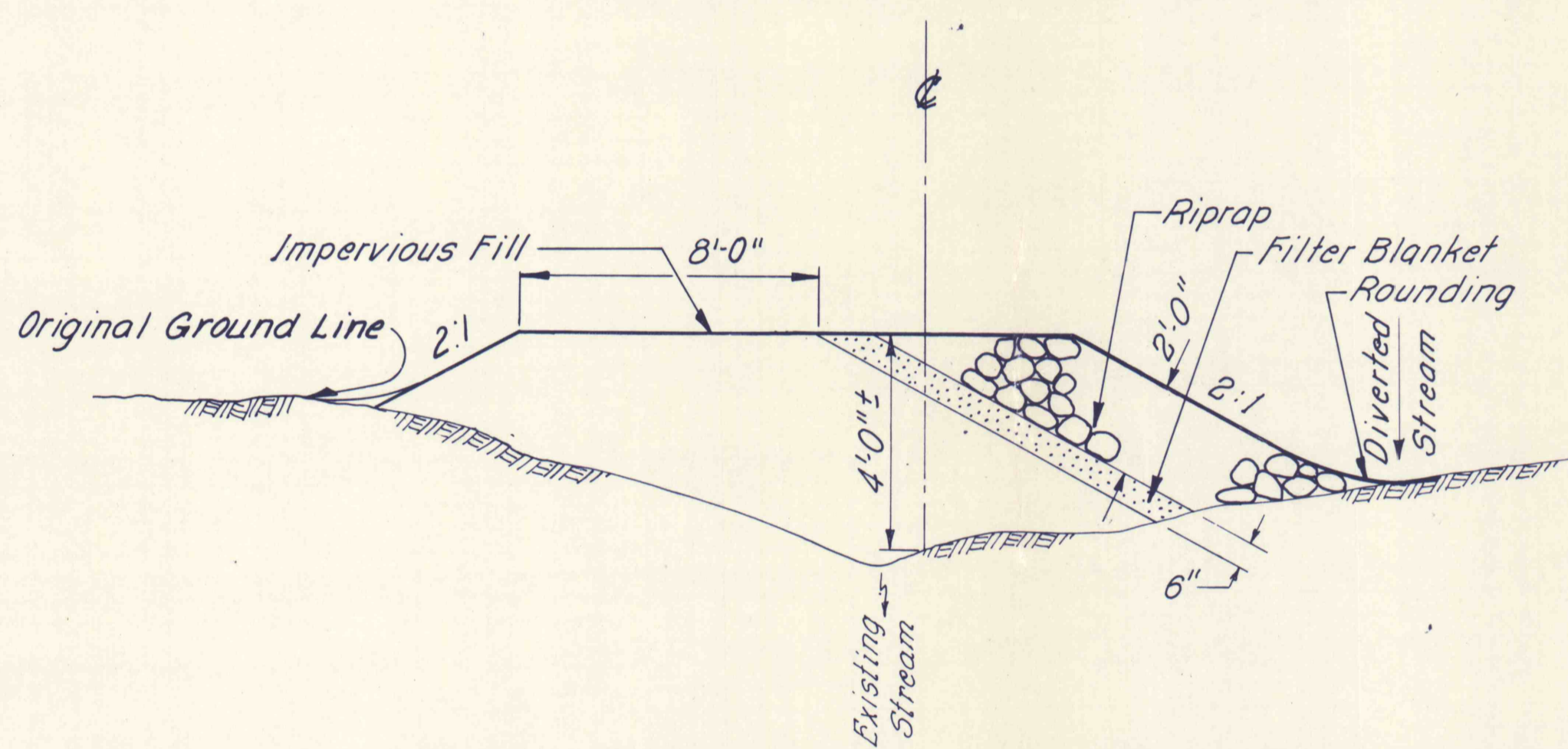
INLET REPAIR TO EXISTING 66" STEEL PIPE DETAIL

Not to Scale



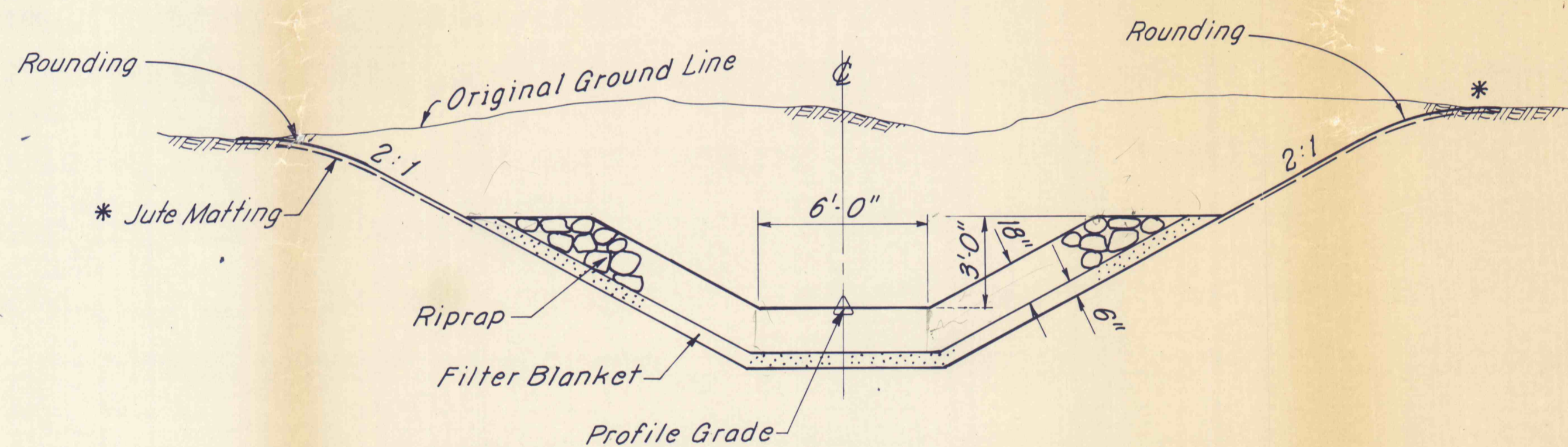
SIDE

NOTE: The Concrete Inlet Sealing Plug is to be placed along the Invert Axis in such a manner as to contain the Discharge within the Eroded Bottom and Sides of the Pipe. The Plug shall have a Gradual Transition to its Full Depth and shall have no abrupt Dimensional Changes evident.



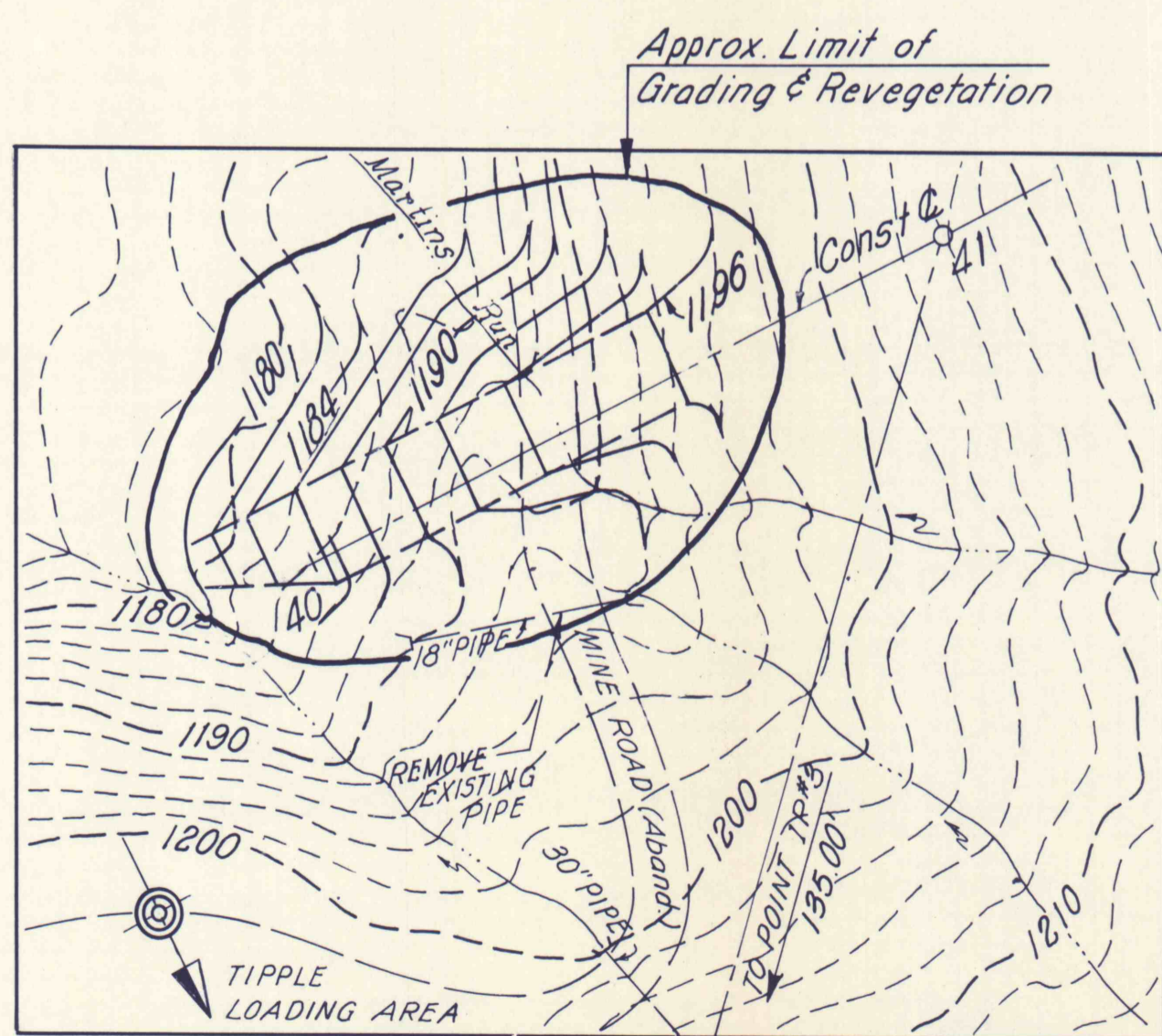
DETAIL - CHANNEL DIVERSION PLUG

Not to Scale



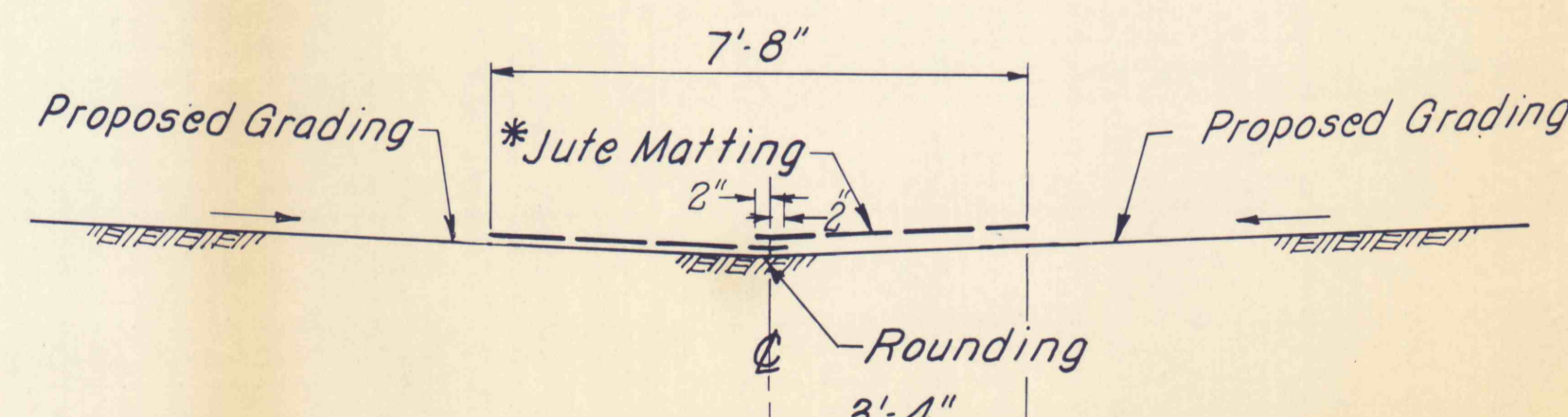
6 FT. BOTTOM RIPRAPPED CHANNEL STA. 20+10 to STA. 23+50

Not to Scale



PLAN - CHANNEL DIVERSION PLUG

Scale: 1" = 25'



DETAIL - SWALE

Not to Scale

NOTE: * - For Jute Matting installation Requirements, See Technical Specifications.

NO	DATE	REVISION	APPR.

SUBMITTED	Norman E. Mitchler
PROFESSIONAL	
APPROVED	Albert A. Ranieri
CHIEF - DIVISION OF MINE RECLAMATION	
APPROVED	DuPonzo
DIRECTOR - BUREAU OF DESIGN	

COMMONWEALTH OF PENNSYLVANIA
DEPARTMENT OF ENVIRONMENTAL RESOURCES
OFFICE OF RESOURCES MANAGEMENT

PROJECT NO. SL 126-2-9

MINE DRAINAGE
POLLUTION ABATEMENT
MARTINS RUN
SWATARA CREEK WATERSHED
SCHUYLKILL COUNTY

BERGER ASSOCIATES, INC.
Consulting Engineers

P.O. Box 1943

Harrisburg, Penna.

CHANNEL DETAILS
& PROFILE

DRAWN BY	DATE	DRAWING NO.
JS	JULY 8, 1974	8 OF 11
CHECKED BY	SCALE	AS SHOWN
MW		