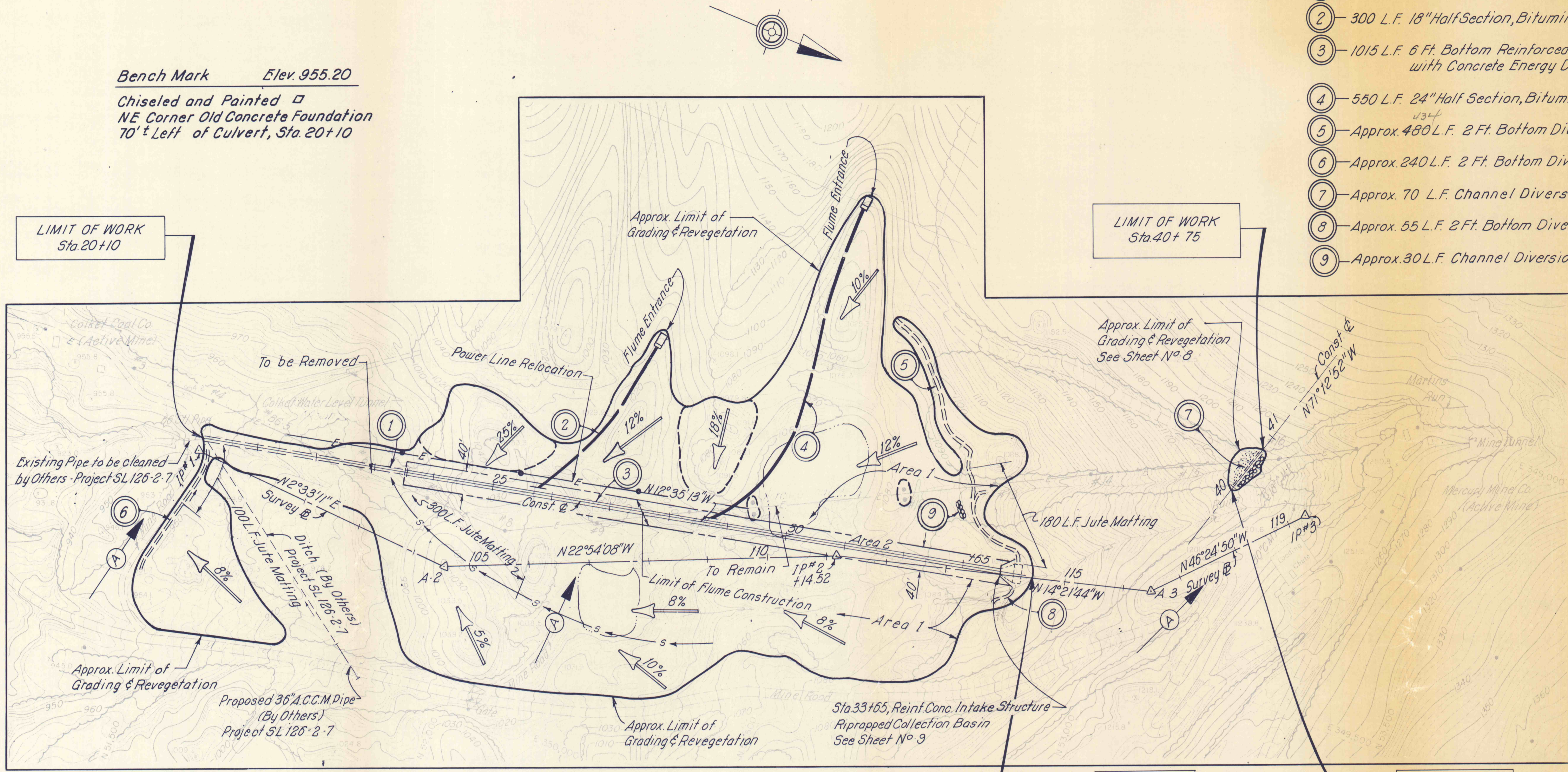


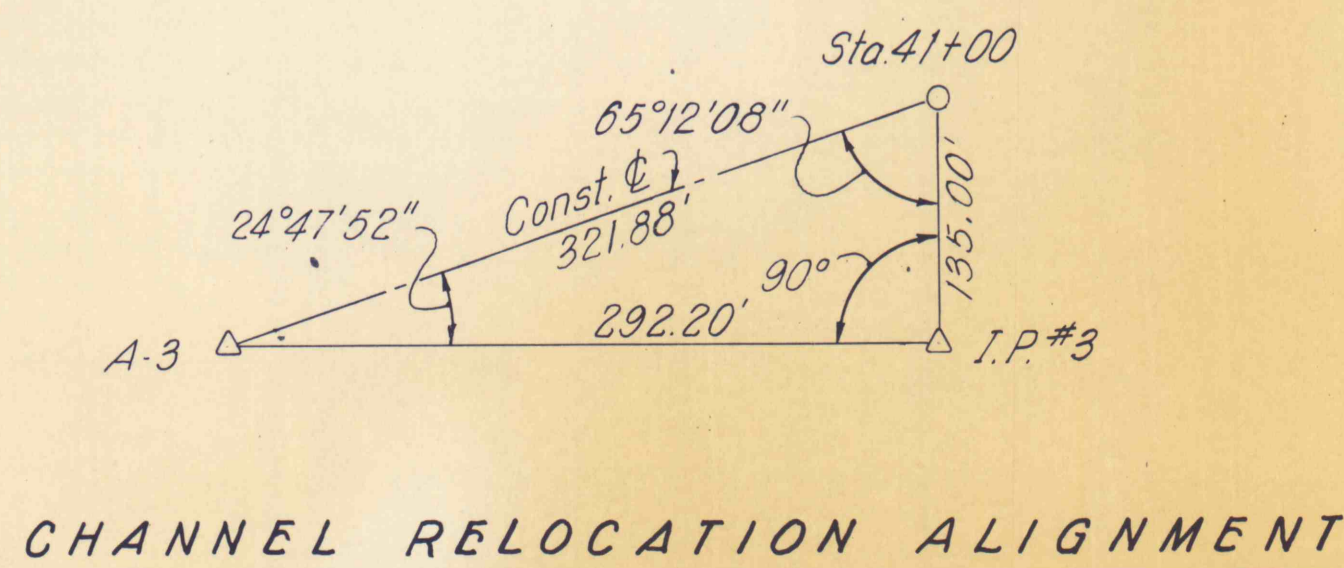
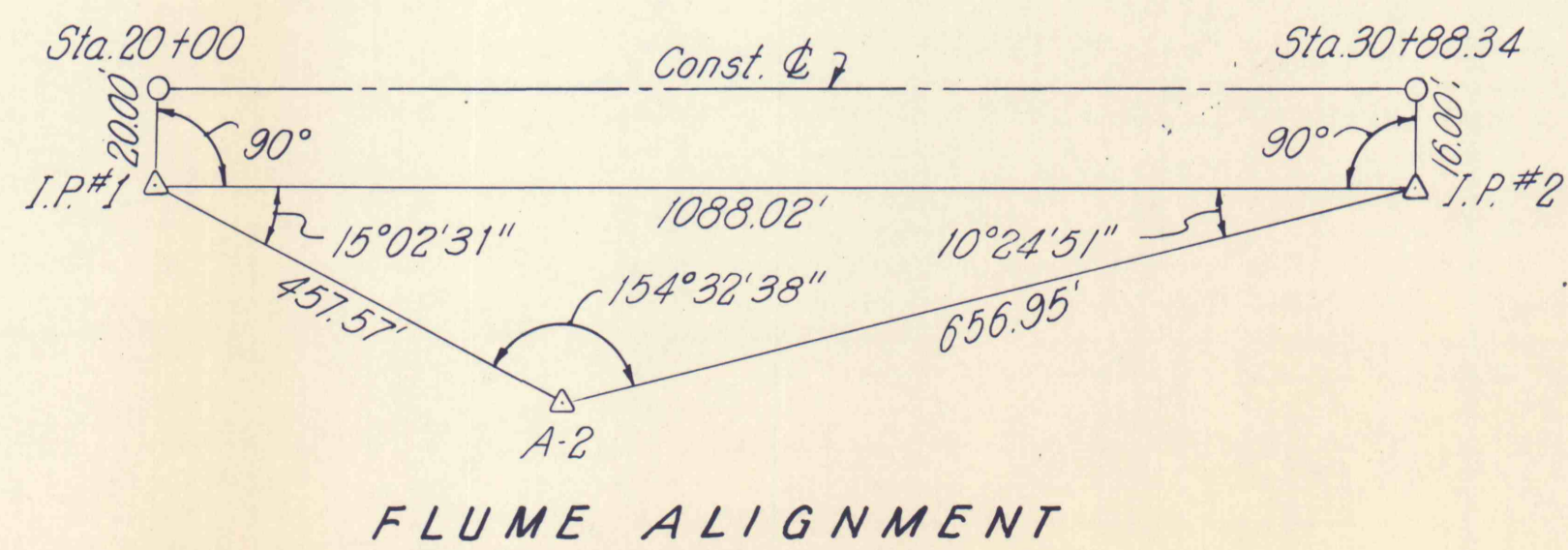
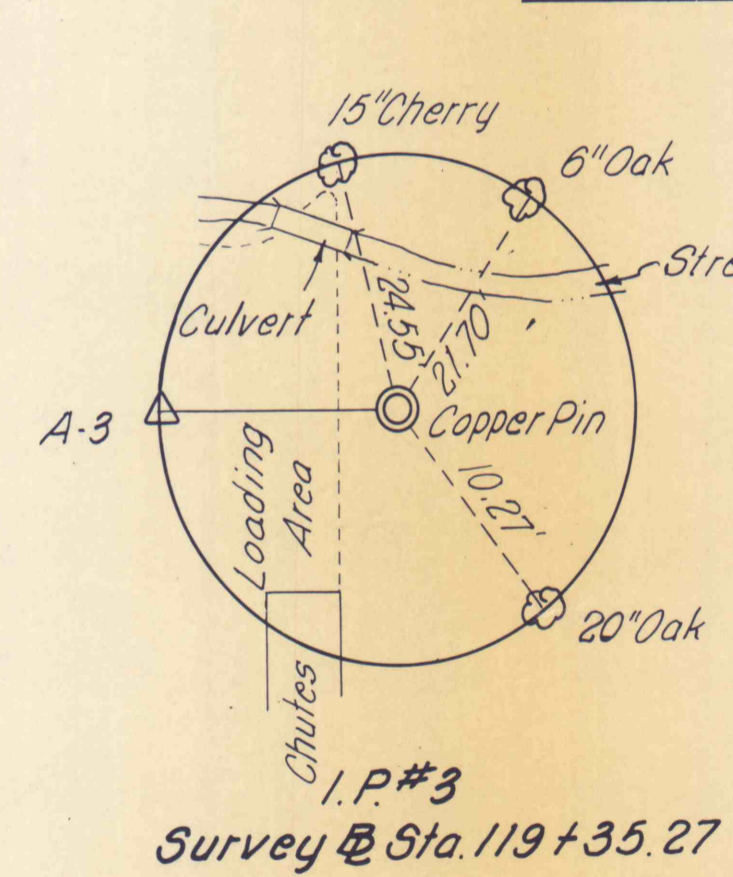
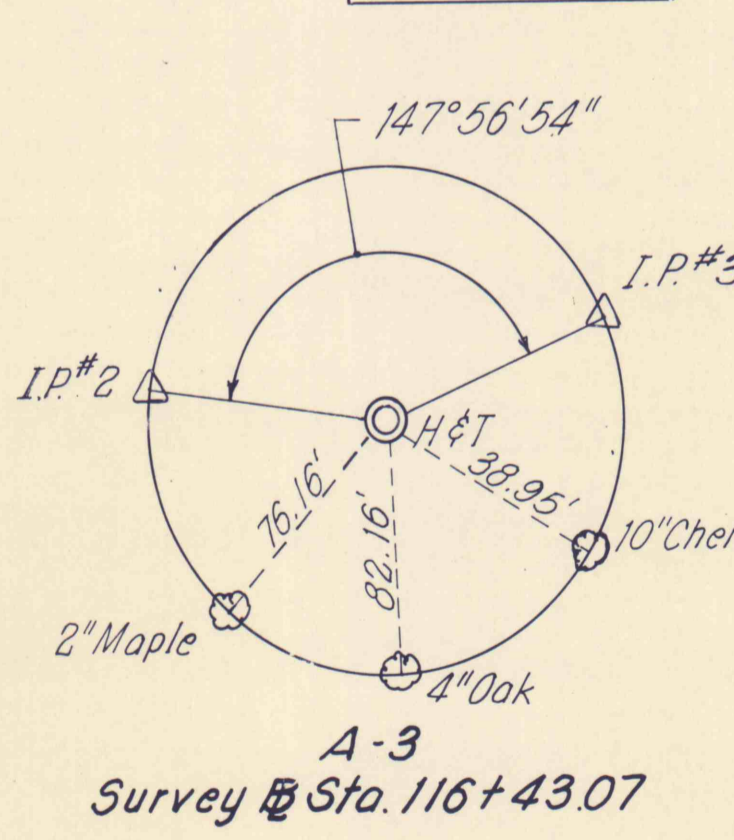
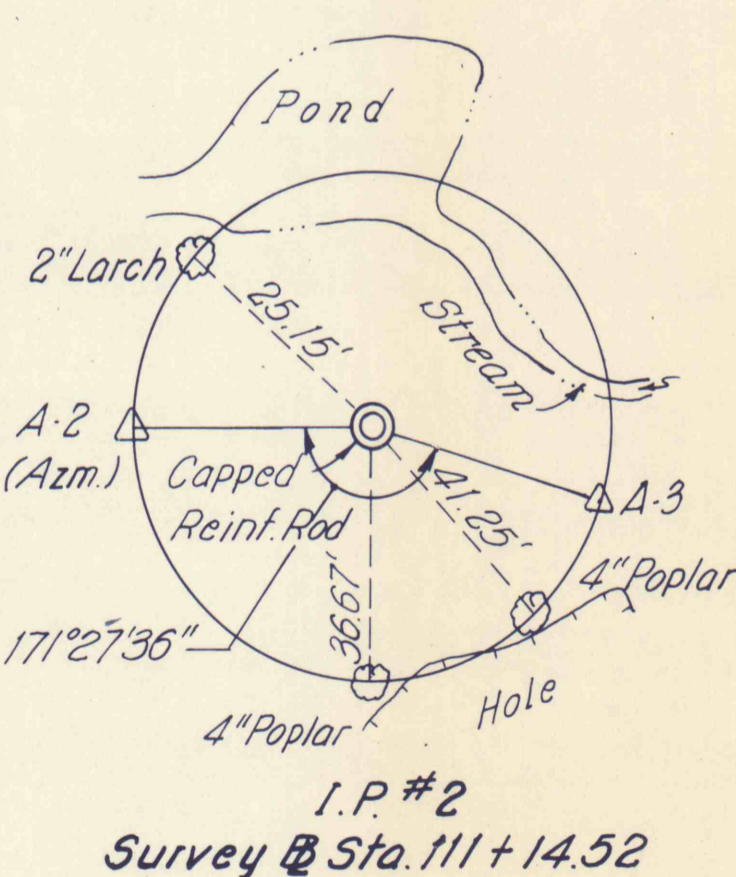
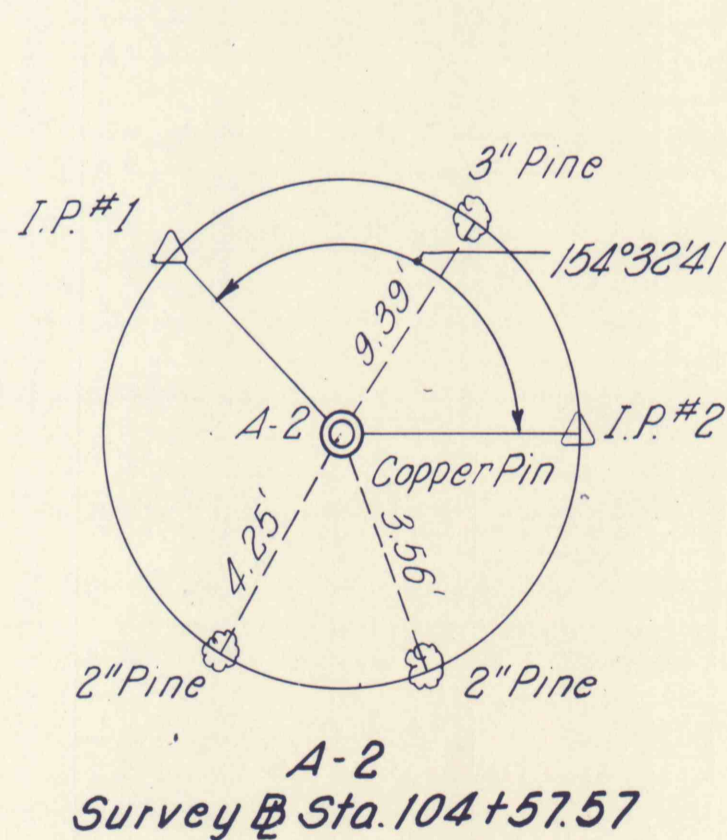
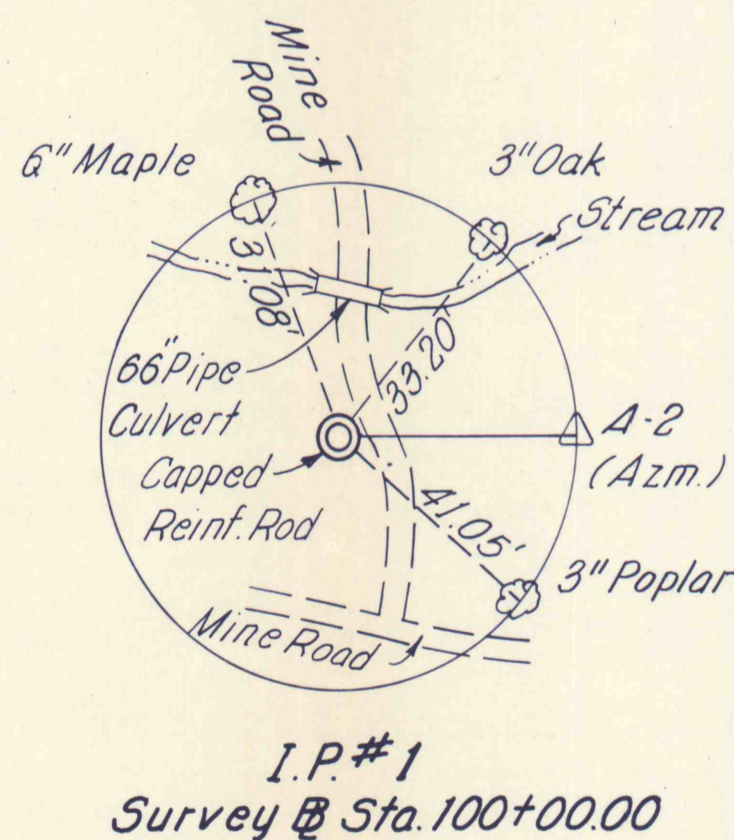
Bench Mark Elev. 955.20

Chiseled and Painted □
NE Corner Old Concrete Foundation
70' Left of Culvert, Sta. 20+10

- (A) Proposed Route for Access to Work Area
- (1) 340 L.F. 6 Ft. Bottom Ripped Channel
- (2) 300 L.F. 18" Half Section, Bituminous Fiber Pipe
- (3) 1015 L.F. 6 Ft. Bottom Reinforced Concrete Flume with Concrete Energy Dissipators
- (4) 550 L.F. 24" Half Section, Bituminous Fiber Pipe
- (5) Approx. 480 L.F. 2 Ft. Bottom Diversion Ditch
- (6) Approx. 240 L.F. 2 Ft. Bottom Diversion Ditch
- (7) Approx. 70 L.F. Channel Diversion Plug
- (8) Approx. 55 L.F. 2 Ft. Bottom Diversion Ditch
- (9) Approx. 30 L.F. Channel Diversion Plug



TO DONALDSON



NO.	DATE	REVISION	APPR.

COMMONWEALTH OF PENNSYLVANIA
DEPARTMENT OF ENVIRONMENTAL RESOURCES
OFFICE OF RESOURCES MANAGEMENT

PROJECT NO. SL-126-2-9
**MINE DRAINAGE
POLLUTION ABATEMENT
MARTINS RUN
SWATARA CREEK WATERSHED
SCHUYLKILL COUNTY**

BERGER ASSOCIATES, INC.
Consulting Engineers
P.O. Box 1943 Harrisburg, Penna.

SITE GRADING PLAN