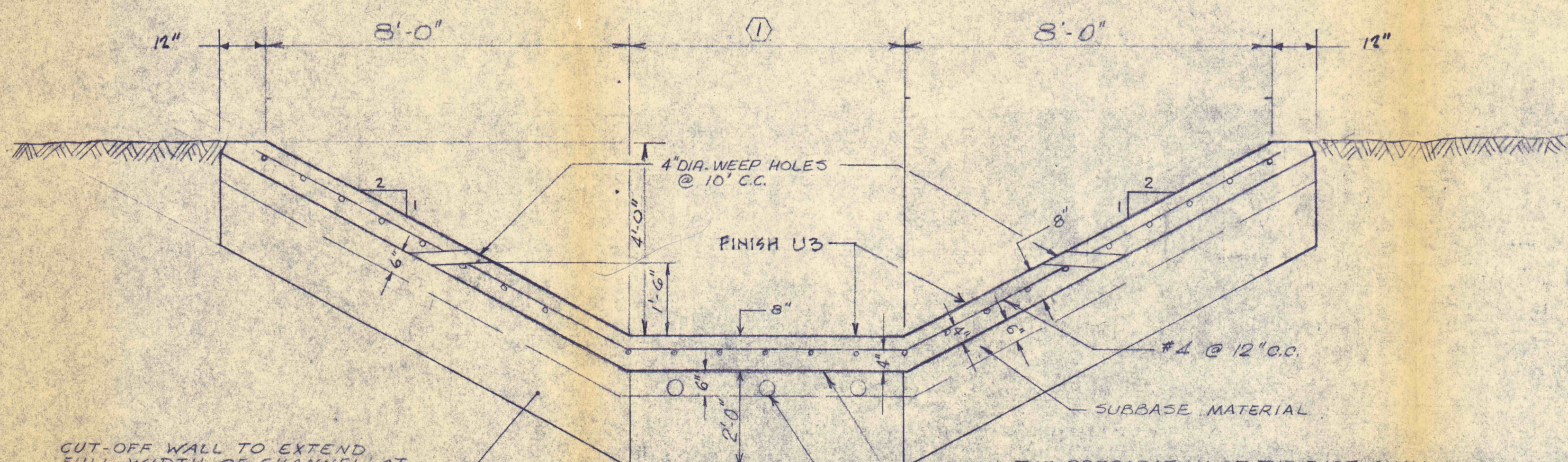


CHANNEL PROFILE

SCALE: HOR. 1" = 50'-0"  
VERT. 1" = 10'-0"

$$\begin{array}{r} 21+12 = 7+54 \\ 1.31 \\ \hline 28+46 \\ 20 \\ \hline 28+66 = 0+00 \end{array}$$

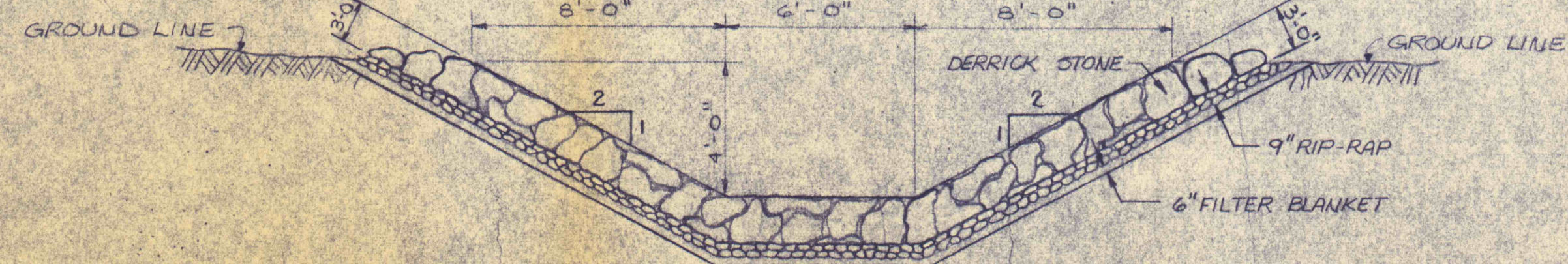


REINFORCED CONCRETE CHANNEL  
TYPICAL SECTION

SCALE: 1" = 2'-0"

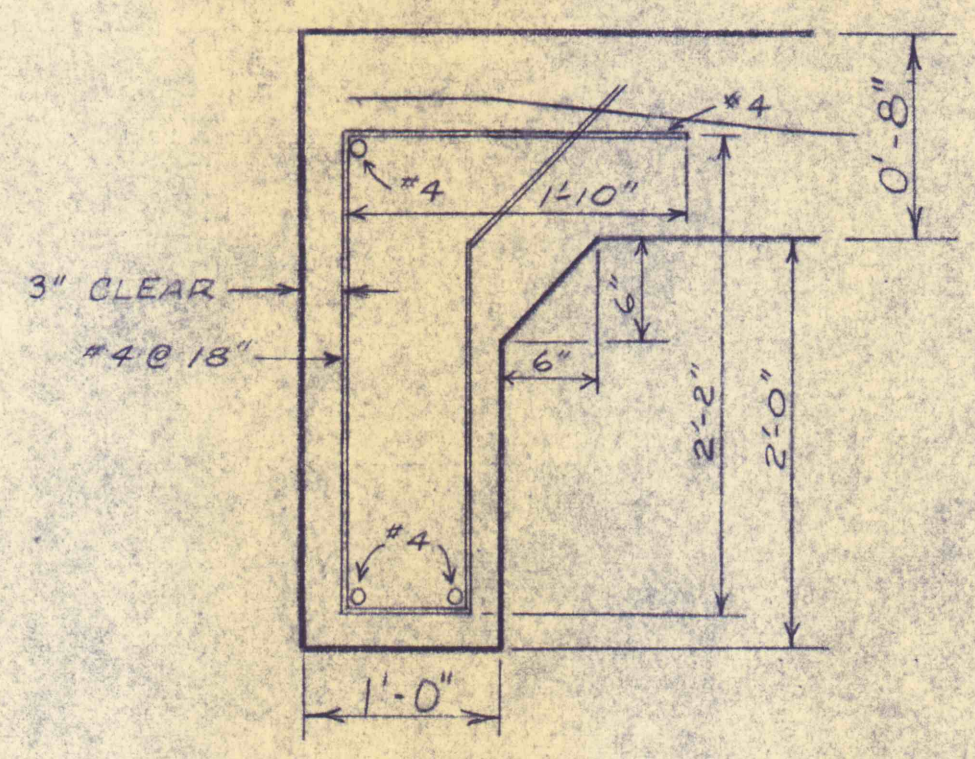
NOTE:

① = 6'-0" WIDTH FROM STA. 21+12 TO STA. 28+46.  
VARIABLE 6'-0" TO 14'-0" WIDTH FROM STA. 28+46 TO STA. 29+66.



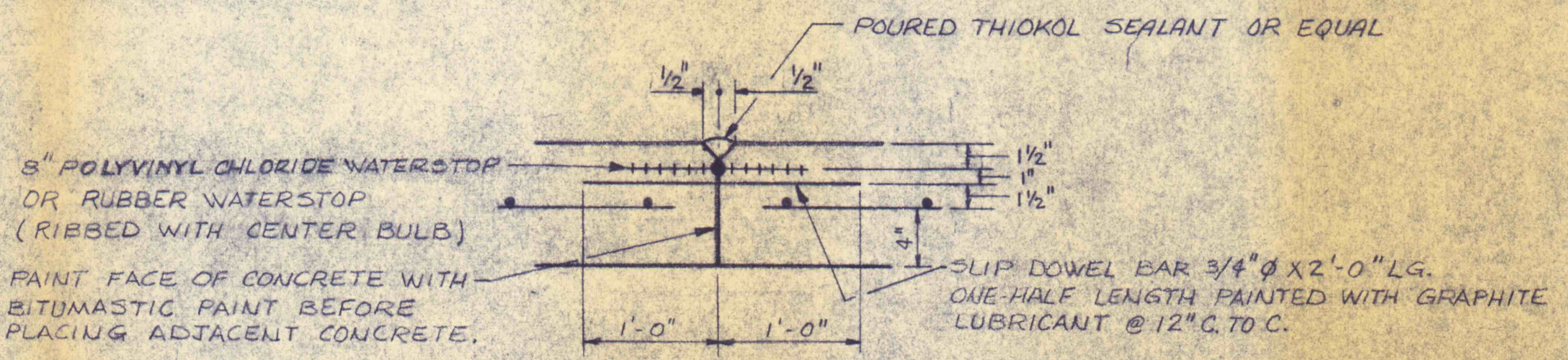
TYPICAL SECTION - OUTLET

STA. 20+62 TO STA. 21+12  
NO SCALE



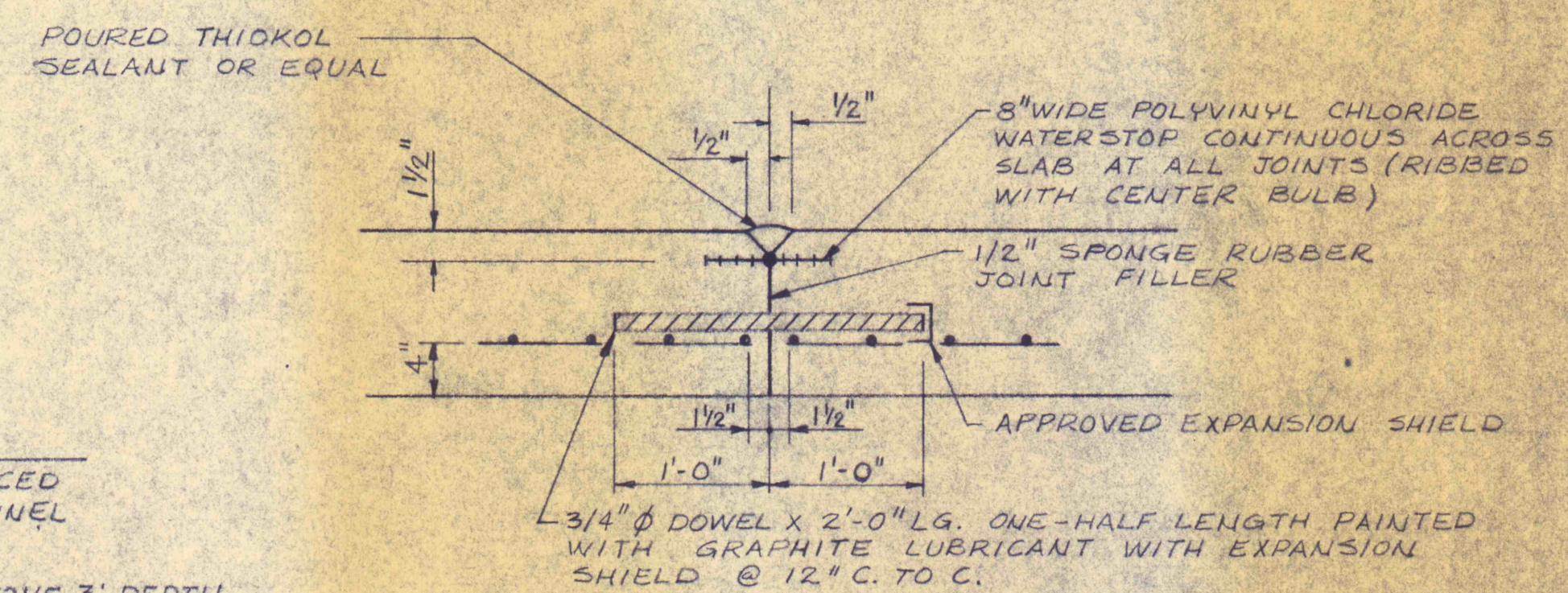
CUT-OFF WALL DETAIL

NO SCALE



CONTRACTION JOINT - 30' SPACING

NO SCALE



EXPANSION JOINT - 90' SPACING

NO SCALE

NO	DATE	REVISION	APPR
SUBMITTED	<i>James P. Cowley</i> PROFESSIONAL		
APPROVED	<i>Robert A. Roman</i> CHIEF - DIVISION OF MINE RECLAMATION		
APPROVED	<i>D. J. ...</i> DIRECTOR - BUREAU OF DESIGN		
COMMONWEALTH OF PENNSYLVANIA DEPARTMENT OF ENVIRONMENTAL RESOURCES OFFICE OF RESOURCES MANAGEMENT			
PROJECT NO. SL 126-1-5			
MINE DRAINAGE POLLUTION ABATEMENT SWATARA CREEK WATERSHED UPPER SWATARA CREEK & POLLY'S RUN REILLY TWP. SCHUYLKILL CO., PA.			
NICHOLAS COWLEY-BROSCH, ASSOC., INC. 3300 NORTH THIRD STREET HARRISBURG, PENNSYLVANIA 17110			
UPPER SWATARA CREEK PROFILE & SECTION			
DRAWN BY	DATE	DRAWING NO.	
BCW	Jan. 11, 1974	7 of 9	
CHECKED BY	SCALE		
HPC	As shown		