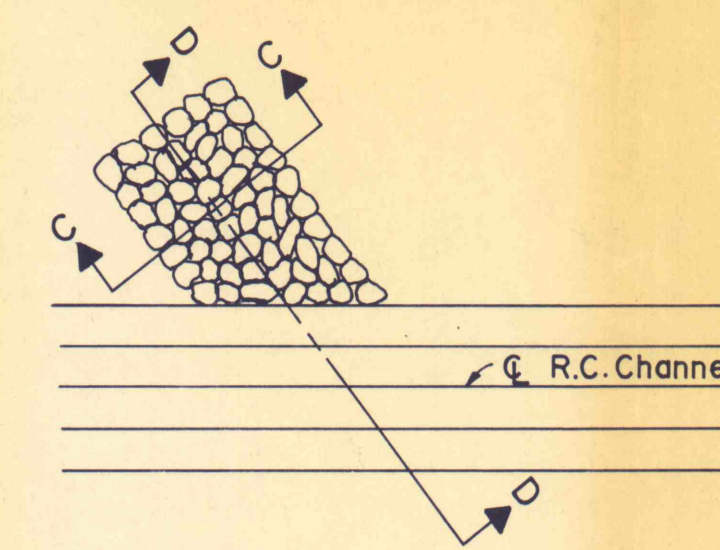


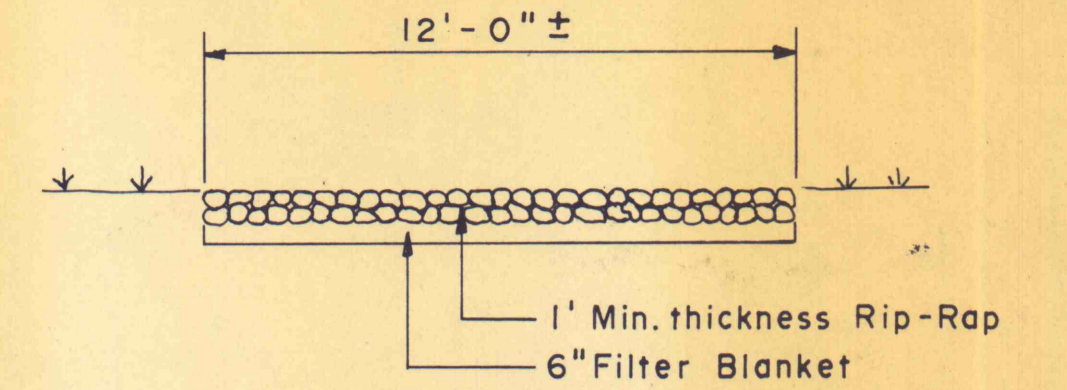
TOE OF SLOPE AND APPROXIMATE LIMIT OF REVEGETATION AND GRADING.

STOP WORK STA. 29 +10

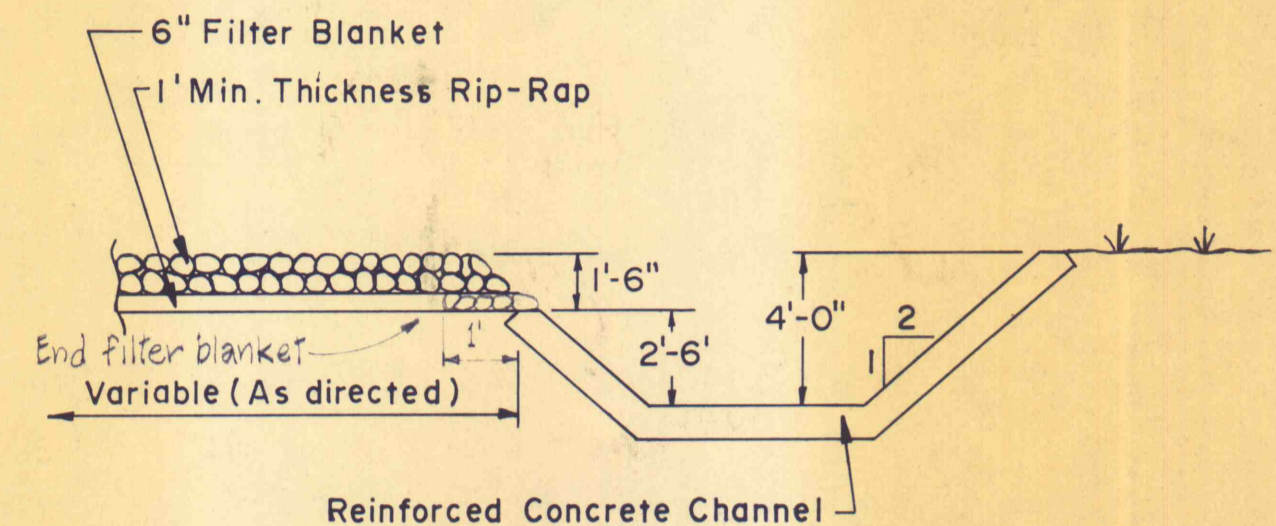
LIMIT OF CONTRACTOR'S WORKING AREA.



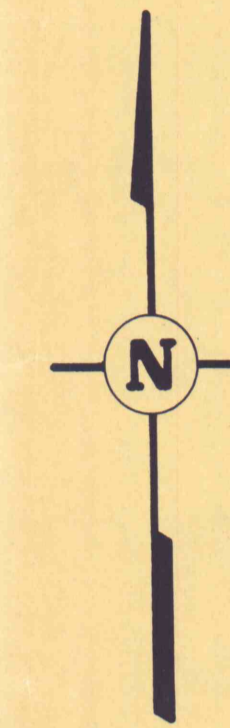
PLAN
No Scale



SECTION C-C
No Scale



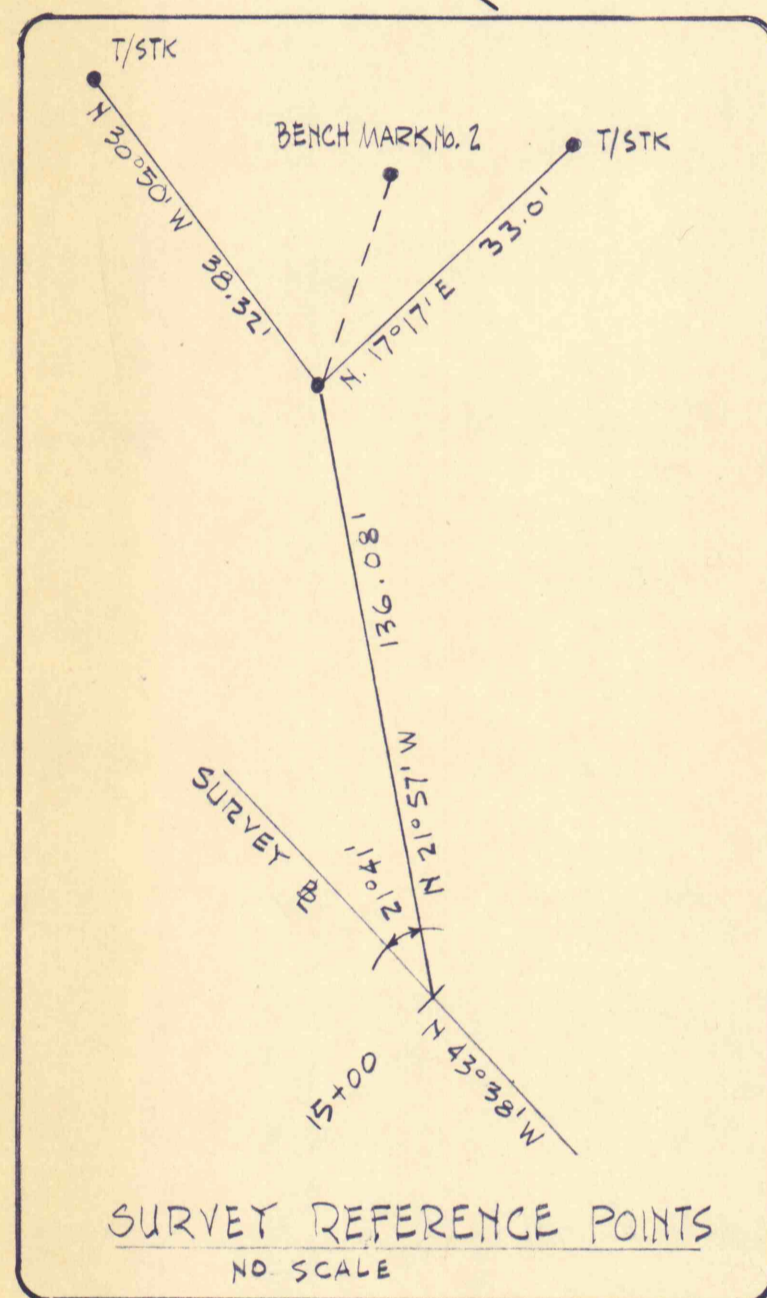
SECTION D-D
No Scale



Constr. C
P.I. STA. 27+48.20
 $\Delta = 29^\circ 47' 35.6''$ LT.
 $D = 9^\circ 35' 09''$
 $T = 159.00'$
 $L = 310.80'$
 $R = 597.71'$
 $E = 20.79'$

Note:

At areas adjacent to the channel which are subject to concentrated side flows approximate Sta. 25+50 and Sta. 26+50, stone for rip-rap shall be placed and spread on a gravel filter blanket where indicated on the plan or as directed by the Engineer. Installation shall be in conformance with Section 16 of Standard Specifications within reasonably close conformity to the sections shown on these drawings or as established by the Engineer.



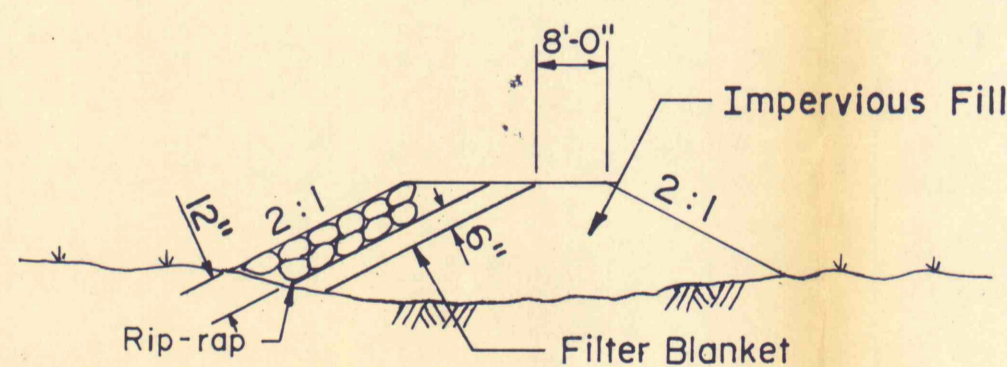
SURVEY REFERENCE POINTS
NO SCALE

LIMIT OF CONTRACTOR'S WORKING AREA.

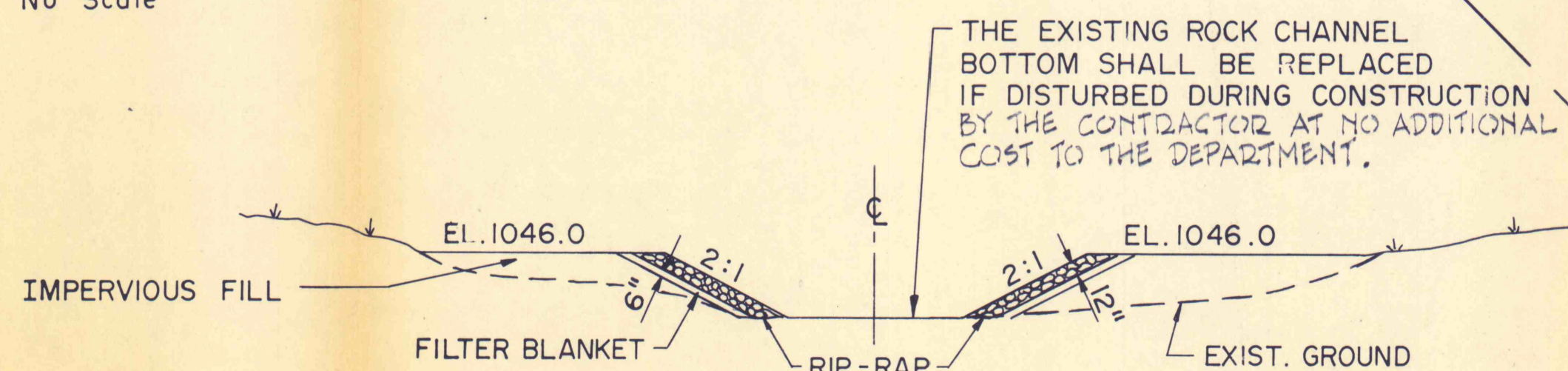
Note:
Trees shall be planted along both sides of channel in accordance with specifications S.R. #19.

TOP OF SLOPE AND APPROXIMATE LIMIT OF REVEGETATION AND GRADING.

TOP OF SLOPE AND APPROXIMATE LIMIT OF REVEGETATION AND GRADING.



SECTION A-A THRU EARTH CHANNEL SECTION
No Scale



SECTION B-B THRU EARTH CHANNEL SECTION
No Scale

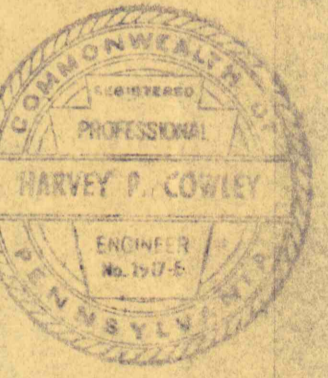
THE EXISTING ROCK CHANNEL BOTTOM SHALL BE REPLACED IF DISTURBED DURING CONSTRUCTION BY THE CONTRACTOR AT NO ADDITIONAL COST TO THE DEPARTMENT.

MATCH LINE WITH DRAWING NO. 5

LEGEND

- LIMIT OF GRADING _____
- LIMIT OF CONTRACTOR'S WORKING AREA - - - - -
- LIMIT OF REVEGETATION - - - - -

NO.	DATE	REVISION	APPR.
SUBMITTED			
APPROVED			
APPROVED			



COMMONWEALTH OF PENNSYLVANIA
DEPARTMENT OF ENVIRONMENTAL RESOURCES
OFFICE OF RESOURCES MANAGEMENT

PROJECT NO. SL 126-1-5
MINE DRAINAGE POLLUTION ABATEMENT
SWATARA CREEK WATERSHED
UPPER SWATARA CREEK & POLLY'S RUN
REILLY TWP. SCHUYLKILL CO., PA.

NICHOLAS-COWLEY-BROSCH ASSOC., INC.
Consulting Engineers
3300 North Third St. Harrisburg, Pa.

UPPER SWATARA CREEK
PART II

DRAWN BY BEN	DATE Jan. 11, 1974	DRAWING NO. 6 of 9
CHECKED BY HPC	SCALE 1" = 20'	