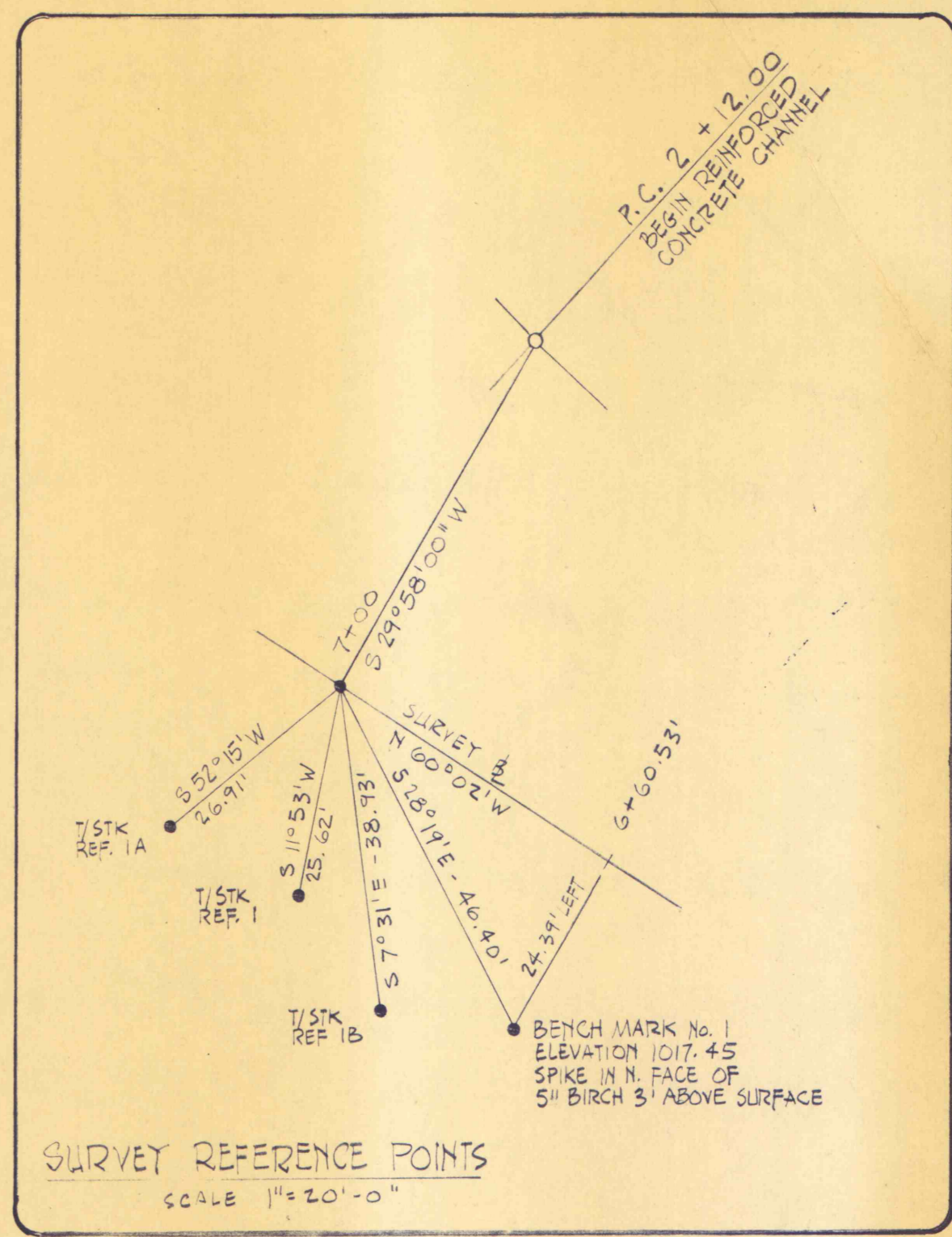
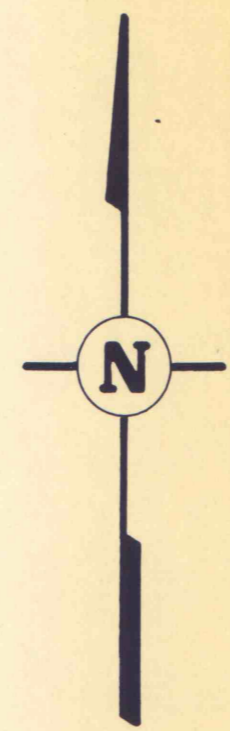


Note:  
See Sheet 6 of 9 for details of placement of rip-rap at areas of concentrated side flows.



**LEGEND**

- LIMIT OF GRADING ————
- LIMIT OF CONTRACTOR'S WORKING AREA - - - - -
- LIMIT OF REVEGETATION - - - - -

NO.	DATE	REVISION

SUBMITTED *Harvey P. Cowley*  
PROFESSIONAL

APPROVED *Albert A. Roman*  
CHIEF - DIVISION OF MINE RECLAMATION

APPROVED *Swilley*  
DIRECTOR - BUREAU OF DESIGN



COMMONWEALTH OF PENNSYLVANIA  
DEPARTMENT OF ENVIRONMENTAL RESOURCES  
OFFICE OF RESOURCES MANAGEMENT

PROJECT NO. SL 126-1-5  
MINE DRAINAGE POLLUTION ABATEMENT  
SWATARA CREEK WATERSHED  
UPPER SWATARA CREEK & POLLY'S RUN  
REILLY TWP. SCHUYLKILL CO., PA.

NICHOLAS-COWLEY-BROSCH ASSOC., INC.  
Consulting Engineers  
3300 North Third St. Harrisburg, Pa.

**UPPER SWATARA CREEK  
PART I**

DRAWN BY BEN DATE Jan. 11, 1974 DRAWING NO. 5 of 9  
CHECKED BY HPC SCALE 1" = 20'

Constr. C  
P.I. STA. 21 + 42.03  
Δ = 6° 00' 00"  
D = 10° 00' 00"  
T = 30.03'  
L = 60.00'  
R = 572.96'  
E = 0.79'

START WORK  
STA. 20 + 62

*Beginning of  
derrick stone  
up.*