

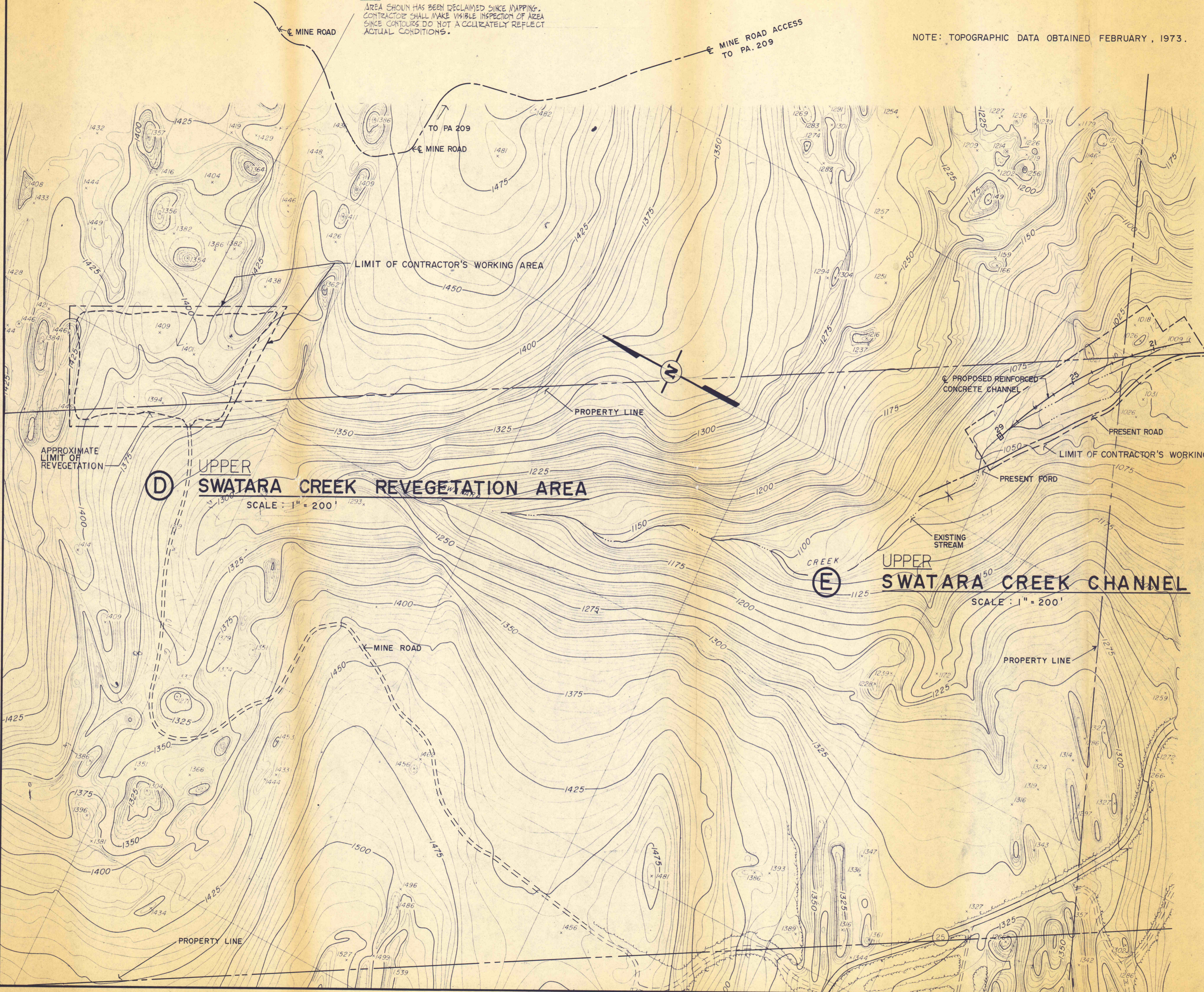
NOTE:  
 AREA SHOWN HAS BEEN DECLINED SINCE MAPPING.  
 CONTRACTOR SHALL MAKE VISIBLE INSPECTION OF AREA  
 SINCE CONTOURS DO NOT ACCURATELY REFLECT  
 ACTUAL CONDITIONS.

NOTE: TOPOGRAPHIC DATA OBTAINED FEBRUARY, 1973.

**LEGEND**

- LIMIT OF GRADING \_\_\_\_\_
- LIMIT OF CONTRACTOR'S WORKING AREA - - - - -
- LIMIT OF REVEGETATION - - - - -

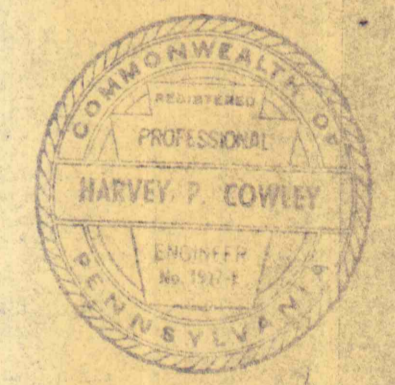
NOTE:  
 FOR PLAN & DETAILS OF PROPOSED  
 REINFORCED CONCRETE CHANNEL  
 SEE SHEETS 5 OF 9 AND 6 OF 9.



**(D) UPPER SWATARA CREEK REVEGETATION AREA**  
 SCALE: 1" = 200'

**(E) UPPER SWATARA CREEK CHANNEL**  
 SCALE: 1" = 200'

NO.	DATE	REVISION	APPR.
SUBMITTED			
	Harvey P. Cowley PROFESSIONAL		
APPROVED	Albert A. Roman CHIEF - DIVISION OF MINE RECLAMATION		
APPROVED	Nicholas Brosch DIRECTOR - BUREAU OF DESIGN		



COMMONWEALTH OF PENNSYLVANIA  
 DEPARTMENT OF ENVIRONMENTAL RESOURCES  
 OFFICE OF RESOURCES MANAGEMENT

PROJECT NO. SL 126-1-5  
 MINE DRAINAGE POLLUTION ABATEMENT  
 SWATARA CREEK WATERSHED  
 UPPER SWATARA CREEK & POLLY'S RUN  
 REILLY TWP. SCHUYLKILL CO., PA.

NICHOLAS-COWLEY-BROSCH ASSOC., INC.  
 Consulting Engineers  
 3300 North Third St. Harrisburg, Pa.

**UPPER SWATARA CREEK PLAN**

DRAWN BY BEN	DATE Jan. 11, 1974	DRAWING NO. 4 of 9
CHECKED BY HPC	SCALE 1" = 200'	