

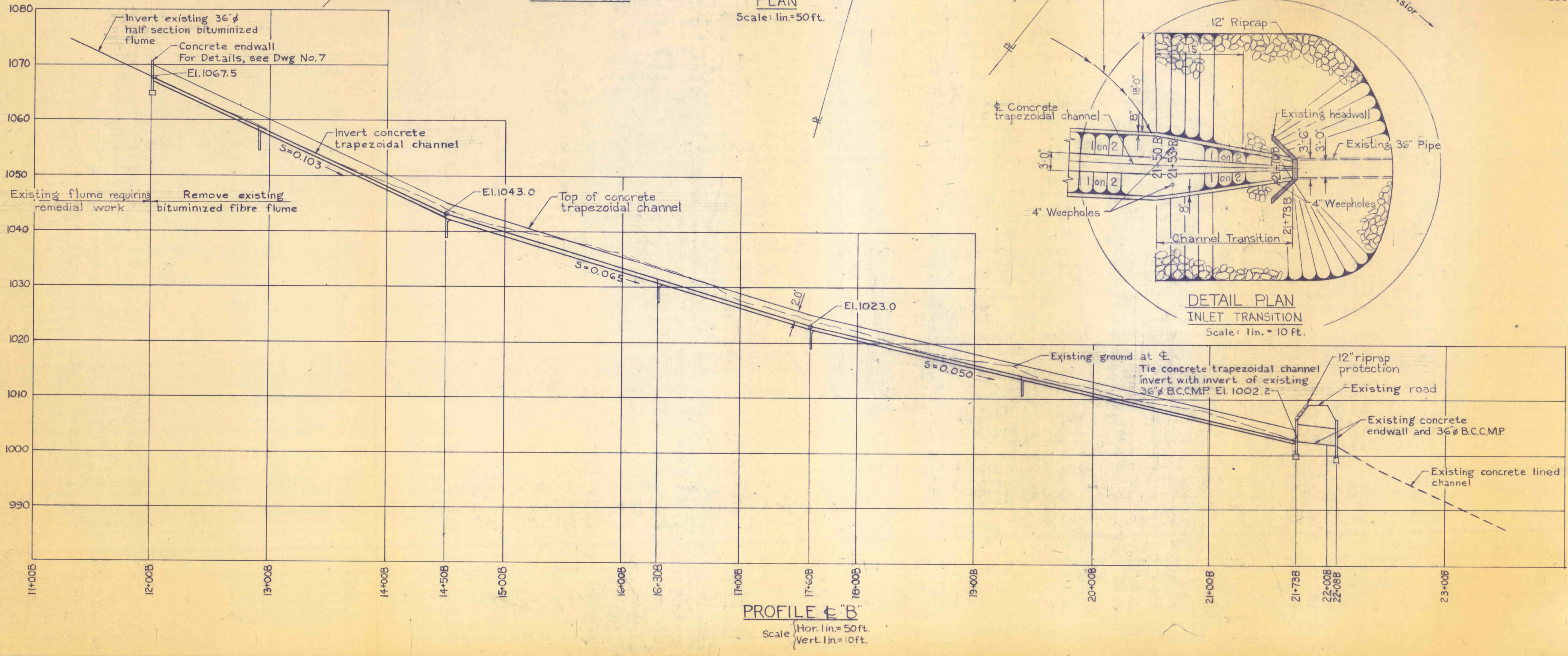
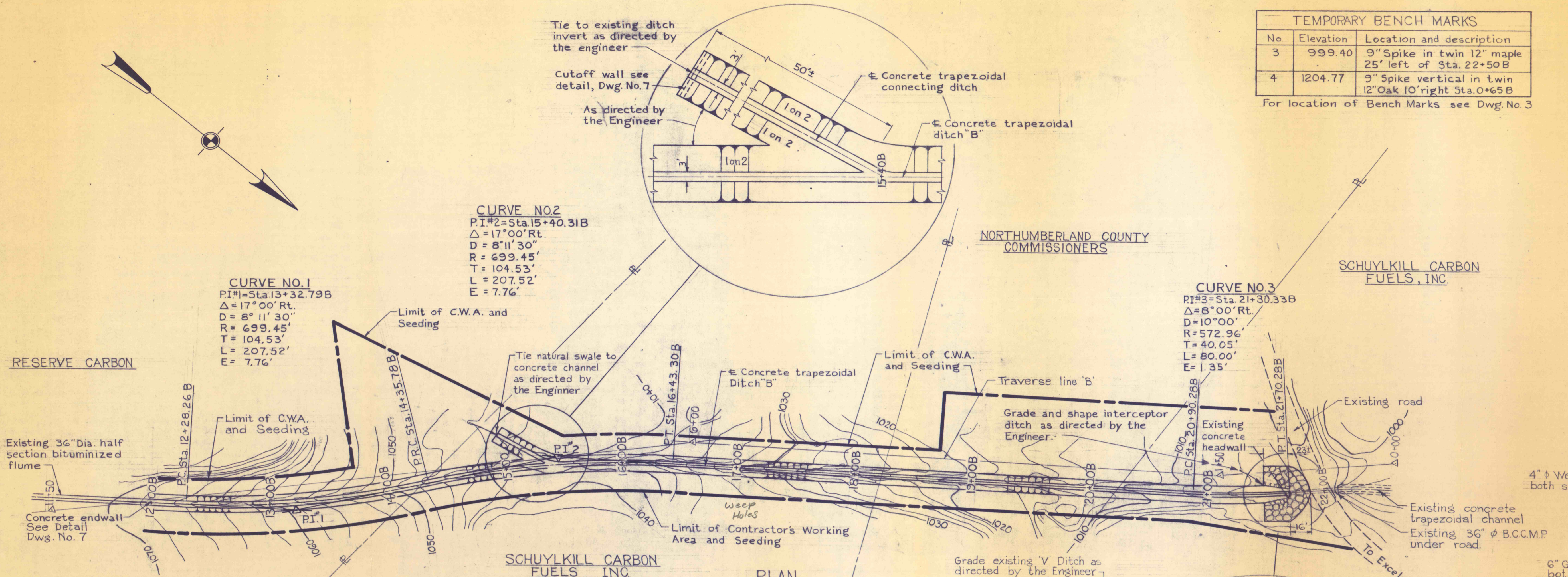
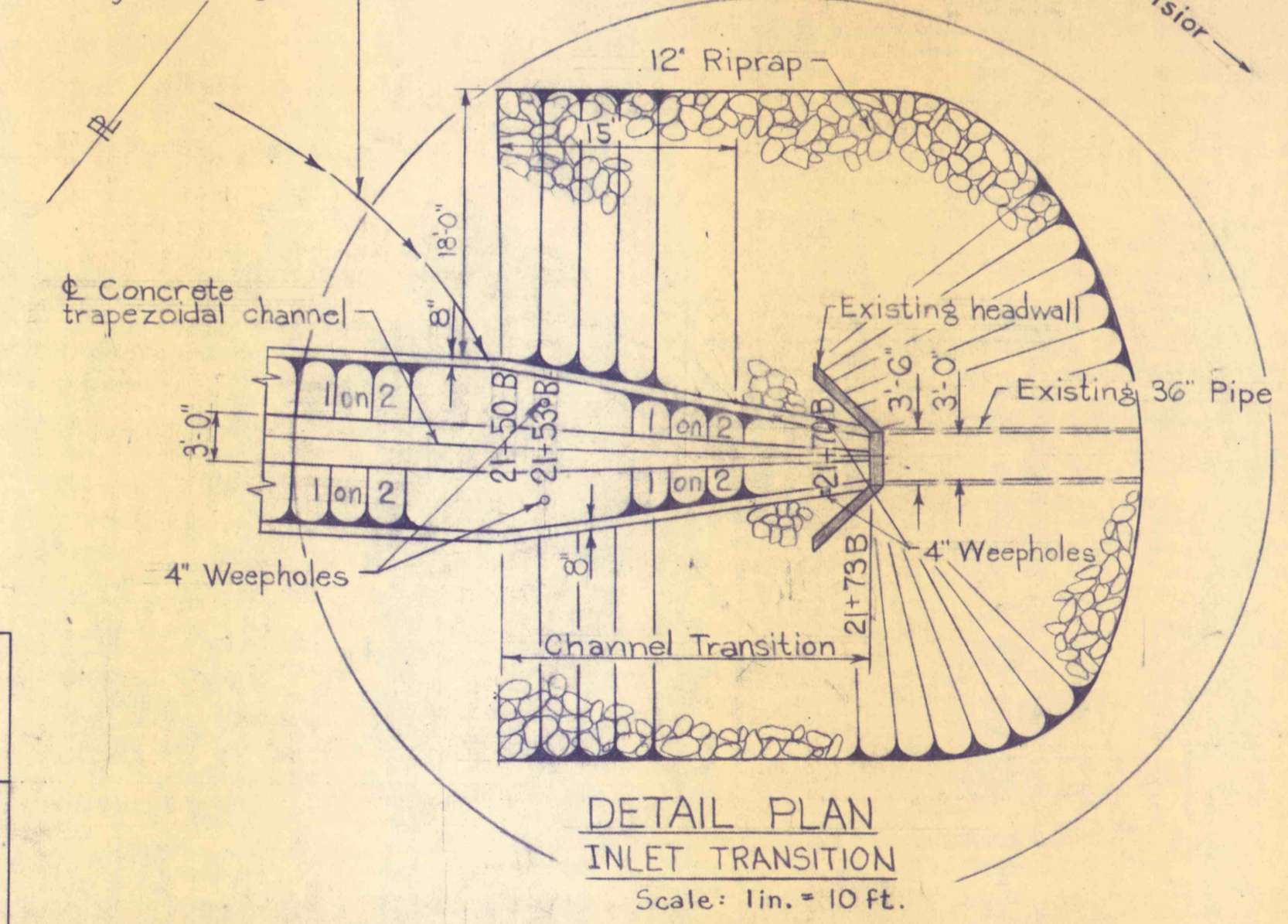
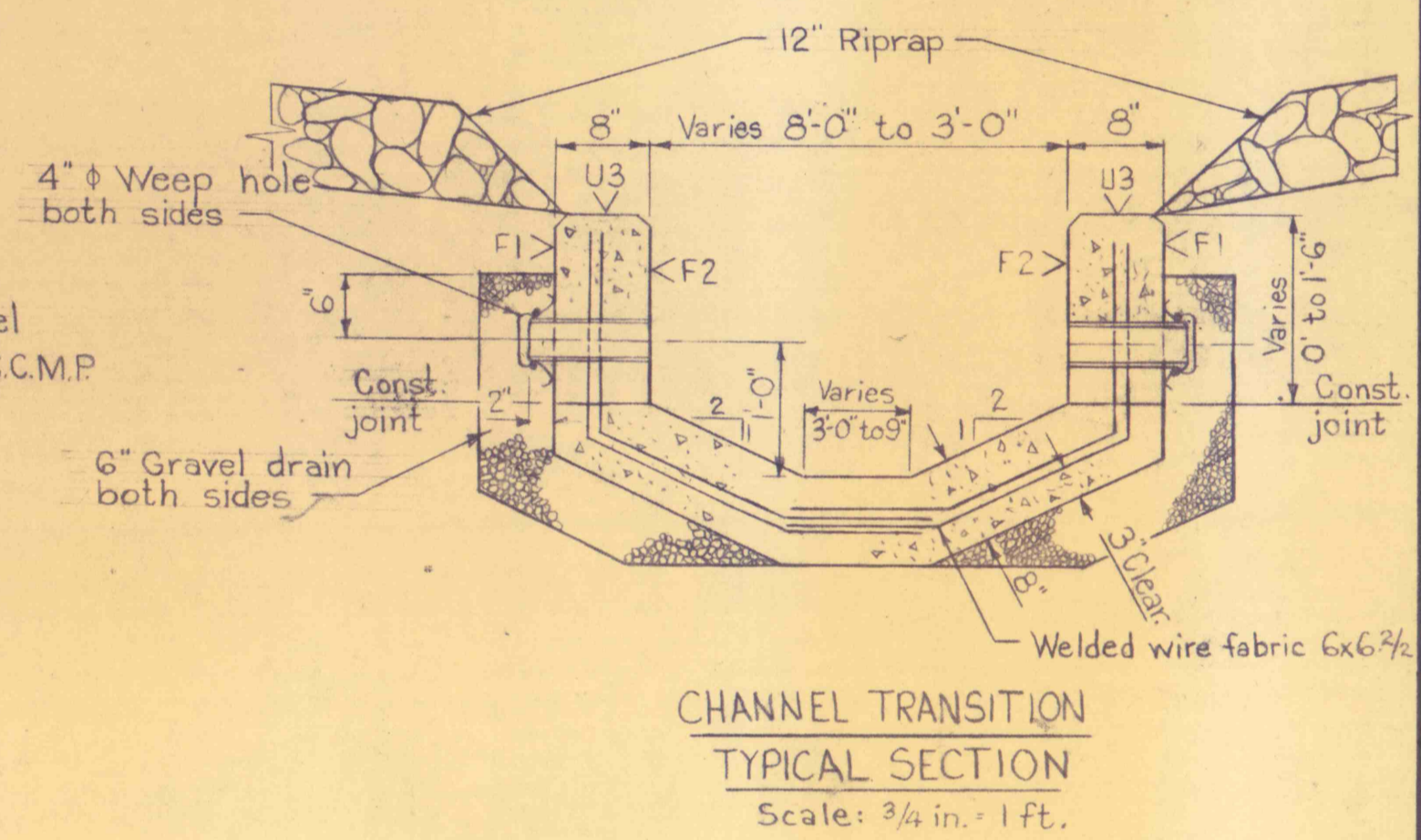
TEMPORARY BENCH MARKS		
No	Elevation	Location and description
3	999.40	9" Spike in twin 12" maple 25' left of Sta. 22+50B
4	1204.77	9" Spike vertical in twin 12" Oak 10' right Sta. 0+65B

For location of Bench Marks see Dwg. No. 3

Transverse

TRAVERSE JOINT LOCATION			
Station	Joint Type	Station	Joint Type
12+30	1	17+50	1
12+60	1	17+60	2
12+80	2	17+90	1
13+20	1	18+20	1
13+50	1	18+50	2
13+80	2	18+80	1
14+10	1	19+10	1
14+50	2	19+40	2
14+80	1	19+70	1
15+10	1	20+00	1
15+40	2	20+30	2
15+70	1	20+60	1
16+00	1	20+90	1
16+30	2	21+20	2
16+60	1	21+50	1
16+90	1	21+73	1

NOTES:
 1. For General Notes see Dwg. No. 3
 2. For Cross Sections and Details see Dwg. Nos. 6 and 7.



NO.	DATE	REVISION	APPR.

SUBMITTED *B. Rao*
PROJECT CO-ORDINATOR

APPROVED *Albert A. Ranieri*
CHIEF - DIVISION OF MINE RECLAMATION

APPROVED *Albert A. Ranieri*
DIRECTOR - BUREAU OF DESIGN

ALBERT A. RANIERI
PROFESSIONAL ENGINEER
No. 11251 E
PENNSYLVANIA

BONDILI P. RAO
PROFESSIONAL ENGINEER
No. 11251 E
PENNSYLVANIA

COMMONWEALTH OF PENNSYLVANIA
DEPARTMENT OF ENVIRONMENTAL RESOURCES
OFFICE OF RESOURCES MANAGEMENT

CONTRACT NO. SL 113-2-3F

MINE DRAINAGE POLLUTION ABATEMENT
REMEDIAL WORK
SHAMOKIN CREEK WATERSHED

NORTHUMBERLAND CO. PENNSYLVANIA

**DITCH B
PLAN AND PROFILE**

DRAWN BY <i>L.J.C.</i>	DATE 9/27/72	DRAWING NO. 5 of 7
CHECKED BY <i>L.R.M.</i>	SCALE As shown	