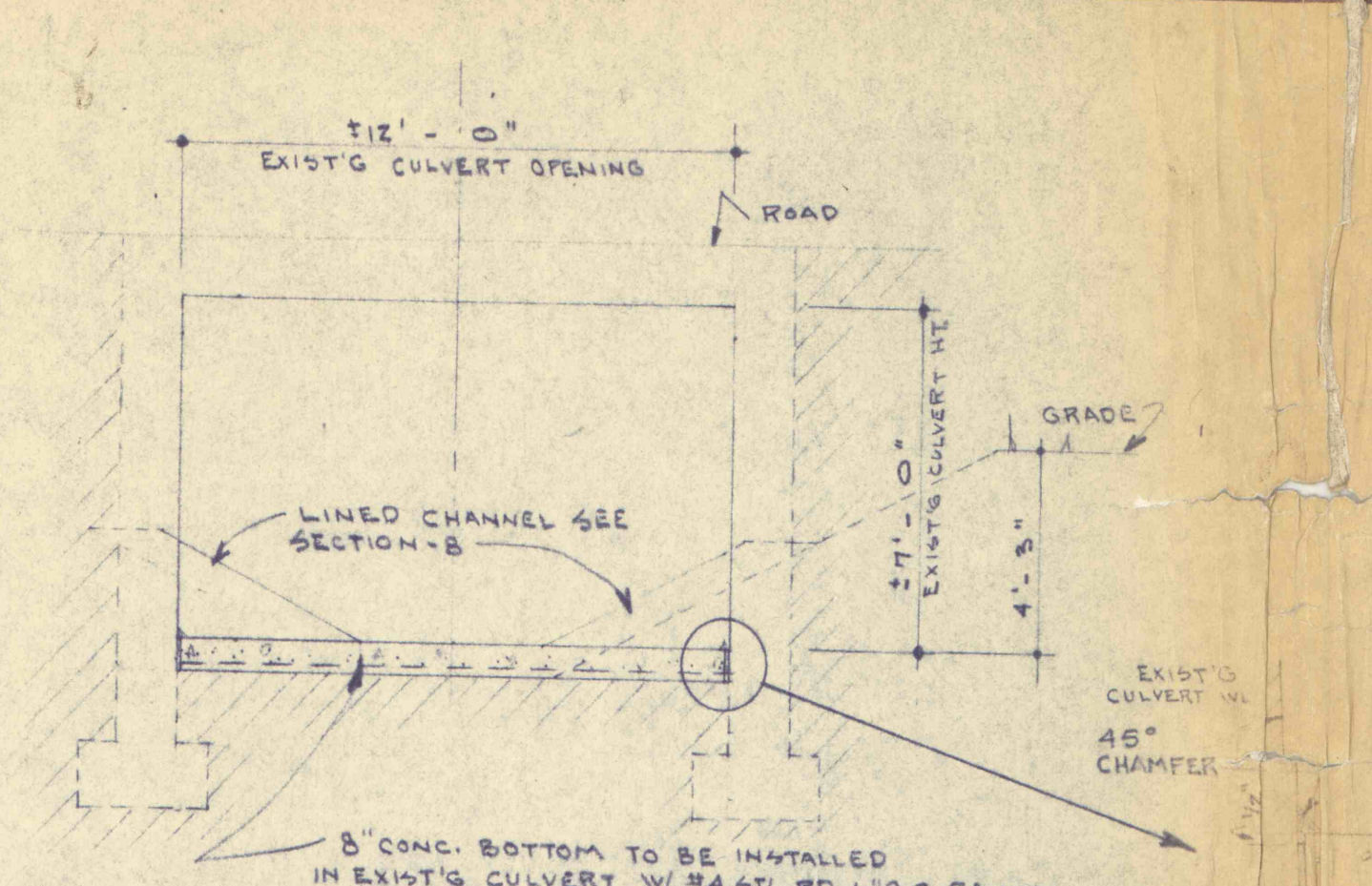
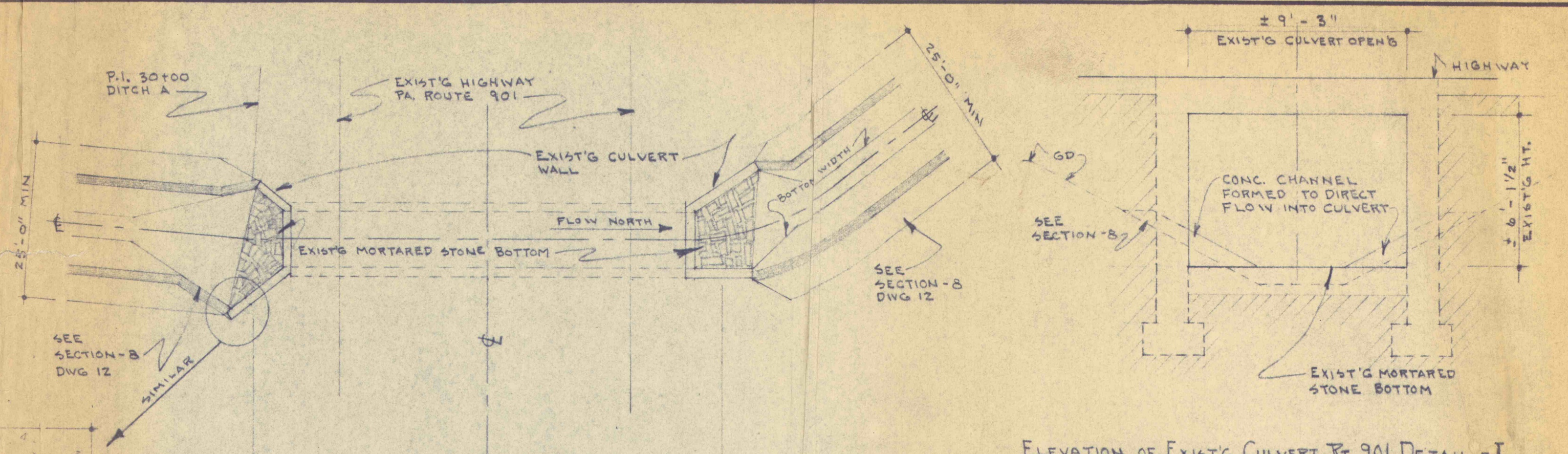


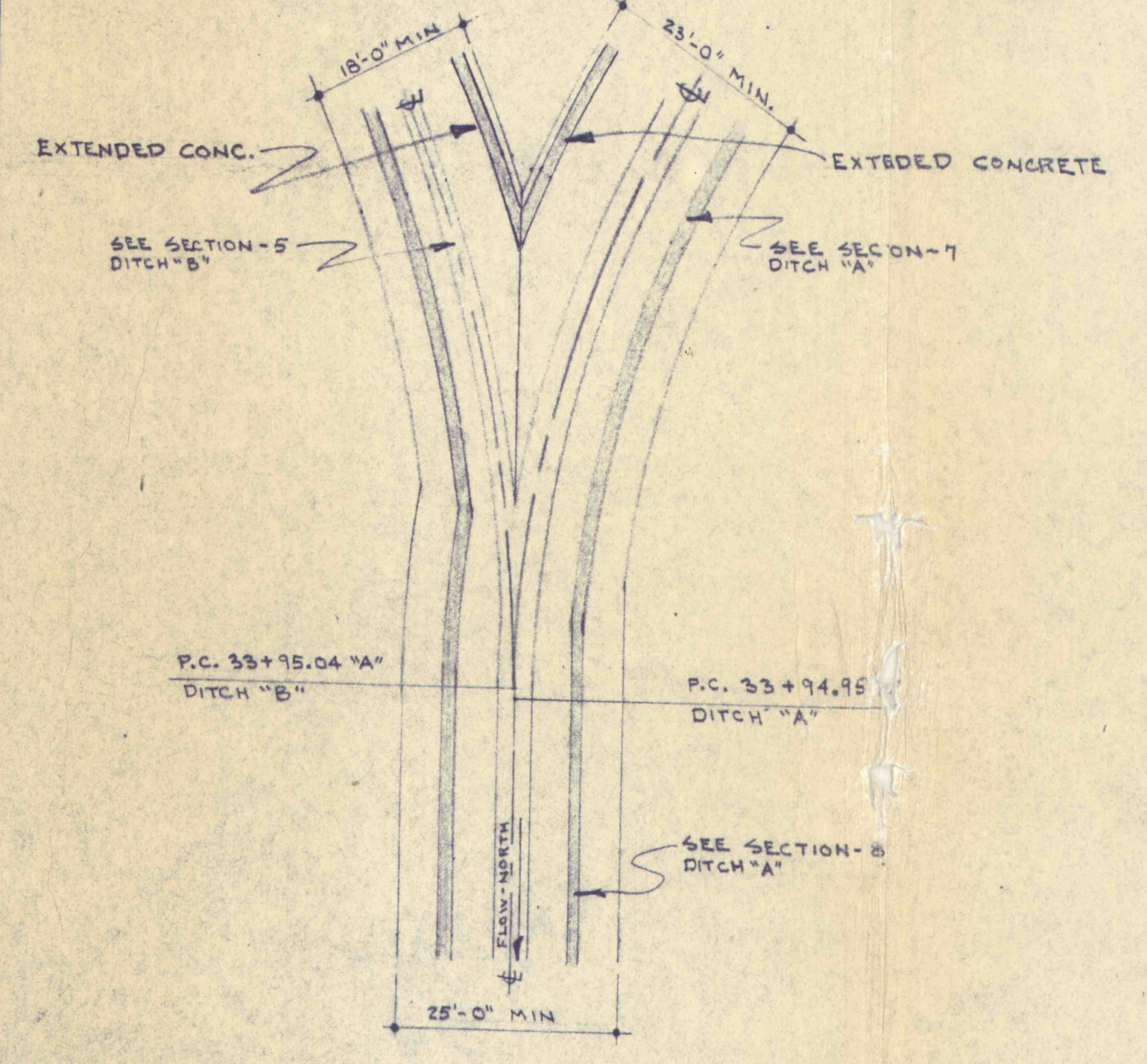
DETAIL OF EXISTING CULVERT AT PAVED ACCESS RD. ON DITCH - A - (H)
SCALE - 1/16" = 1' - 0"



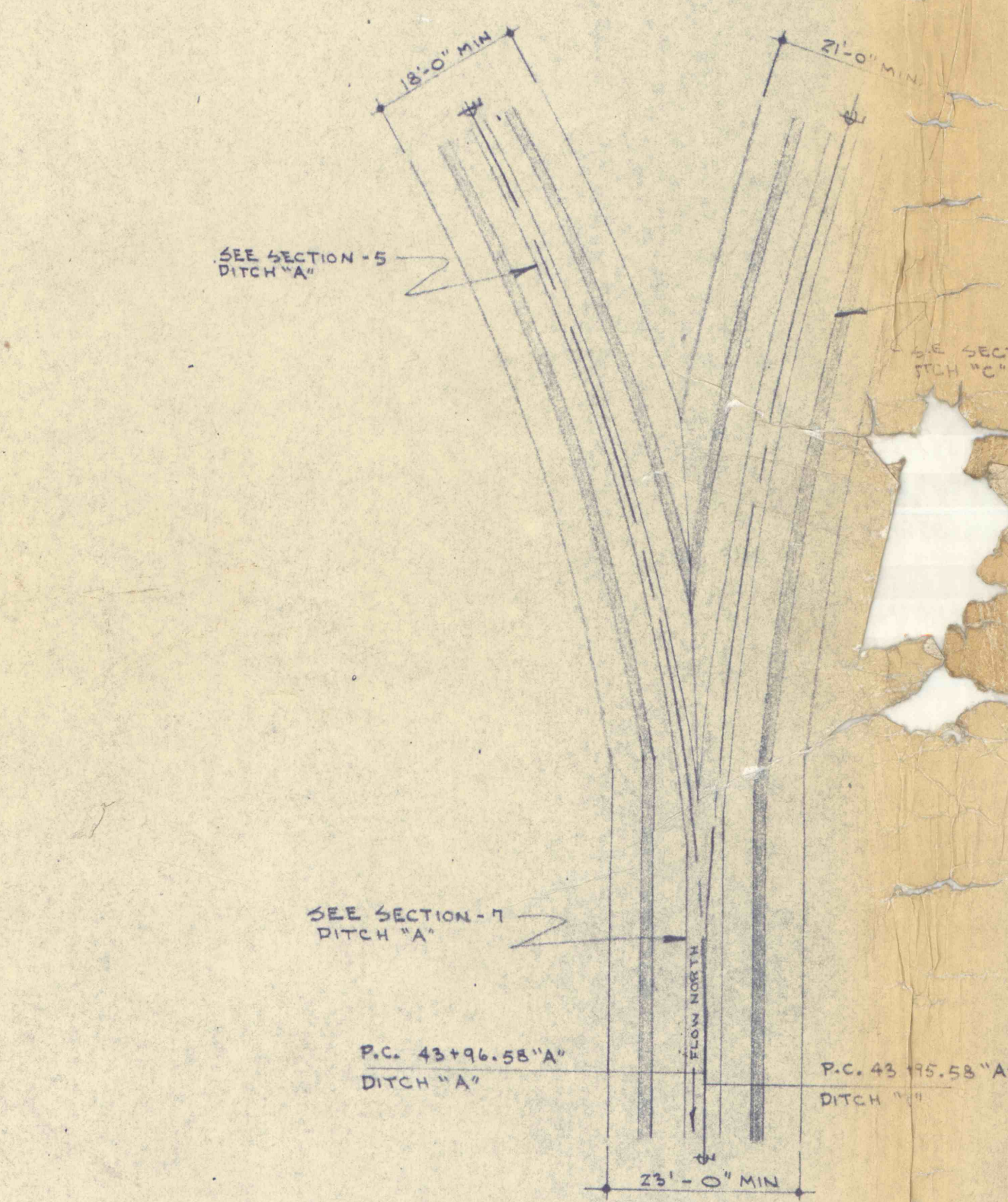
ELEVATION OF EXIST'G CULVERT DETAIL - H
SCALE - 1/4" = 1' - 0"



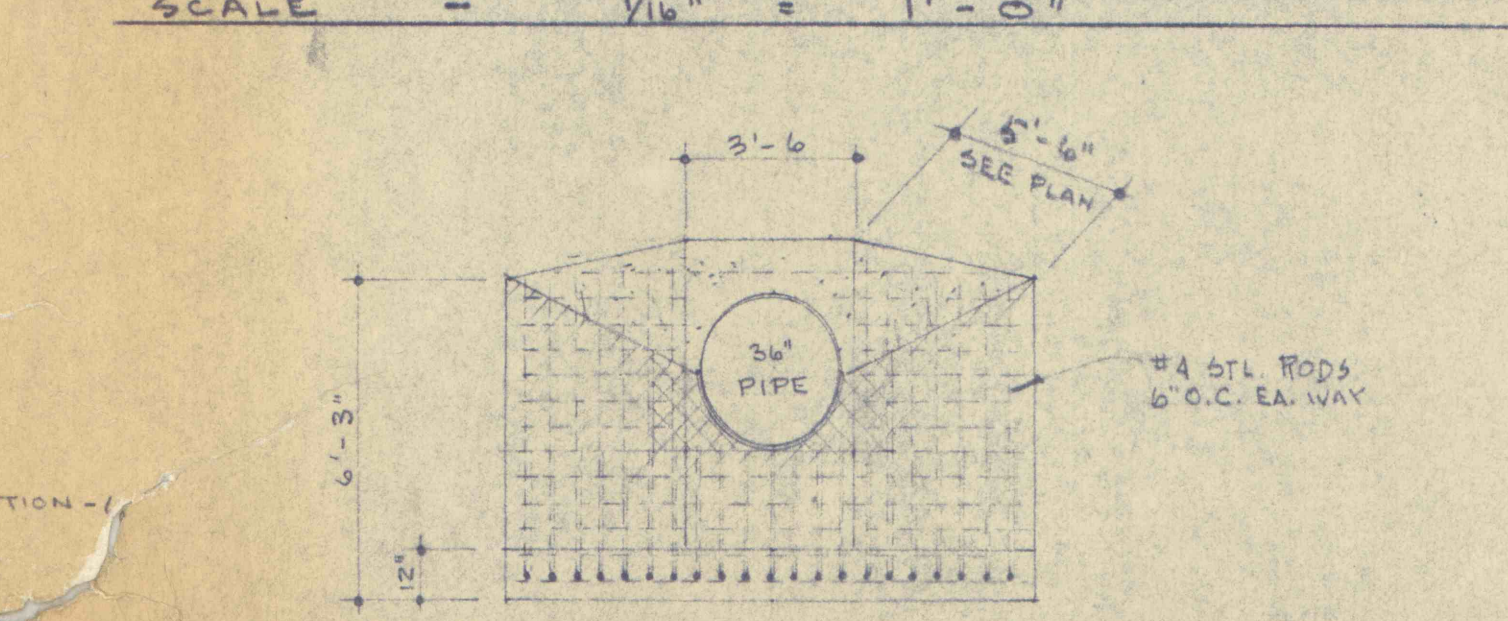
ELEVATION OF EXIST'G CULVERT AT 901 DETAIL - I
SCALE - 1/4" = 1' - 0"



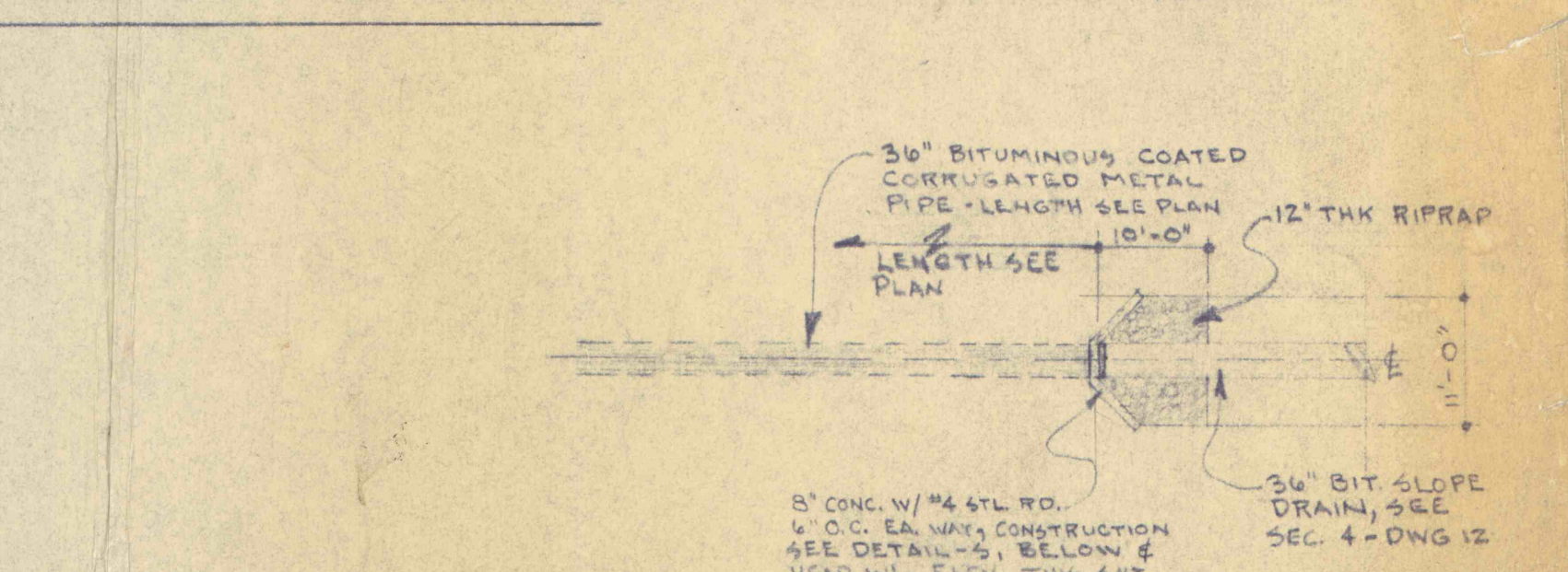
DETAIL OF CONNECTION DITCHES "A" & "B" - (J)
SCALE - 1/16" = 1' - 0"



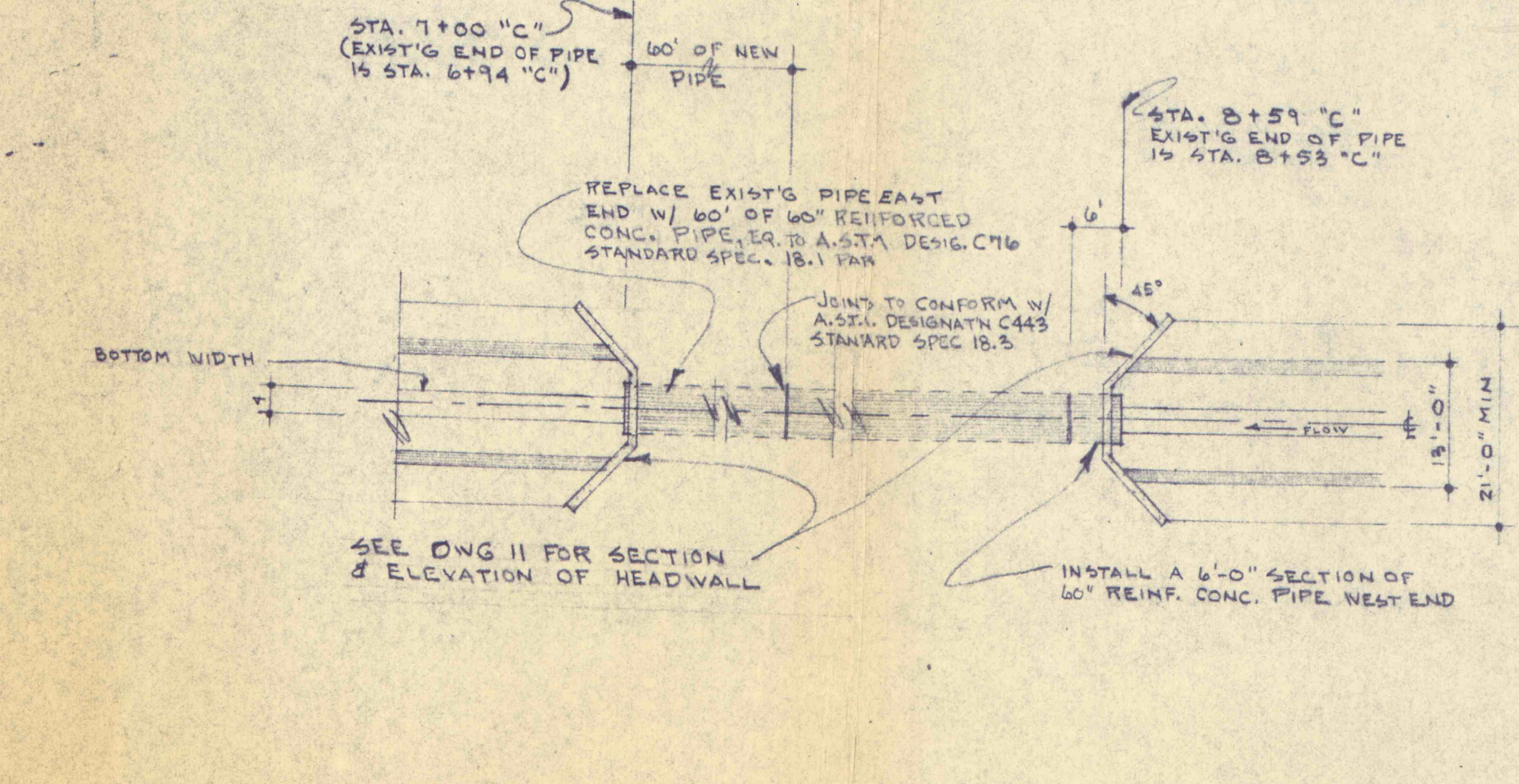
DETAIL OF CONNECTION DITCH "A" WITH DITCH "C" - (K)
SCALE - 1/16" = 1' - 0"



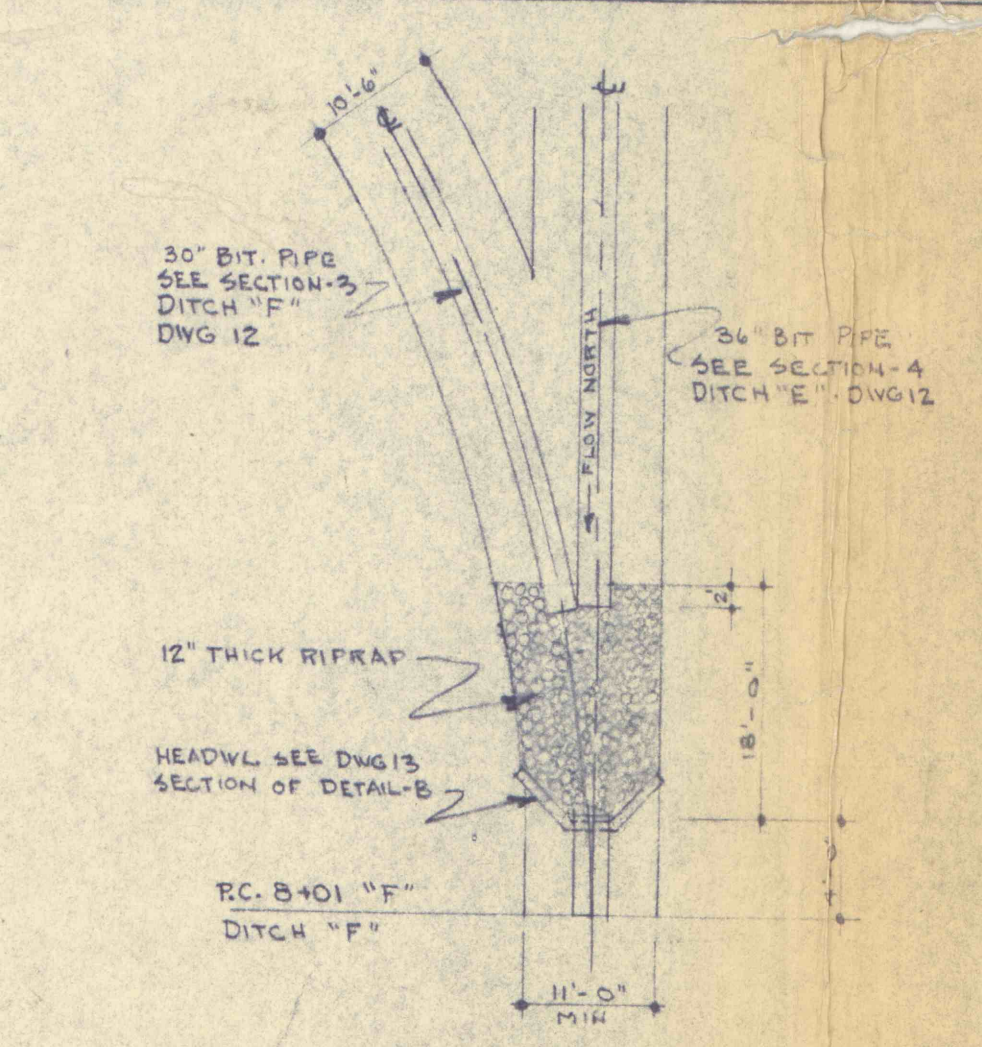
HEADWL. ELEV. FOR 36" PIPE AT 36" BIT. FLUME (DETAIL - M & Q)
SCALE - 1/4" = 1' - 0"



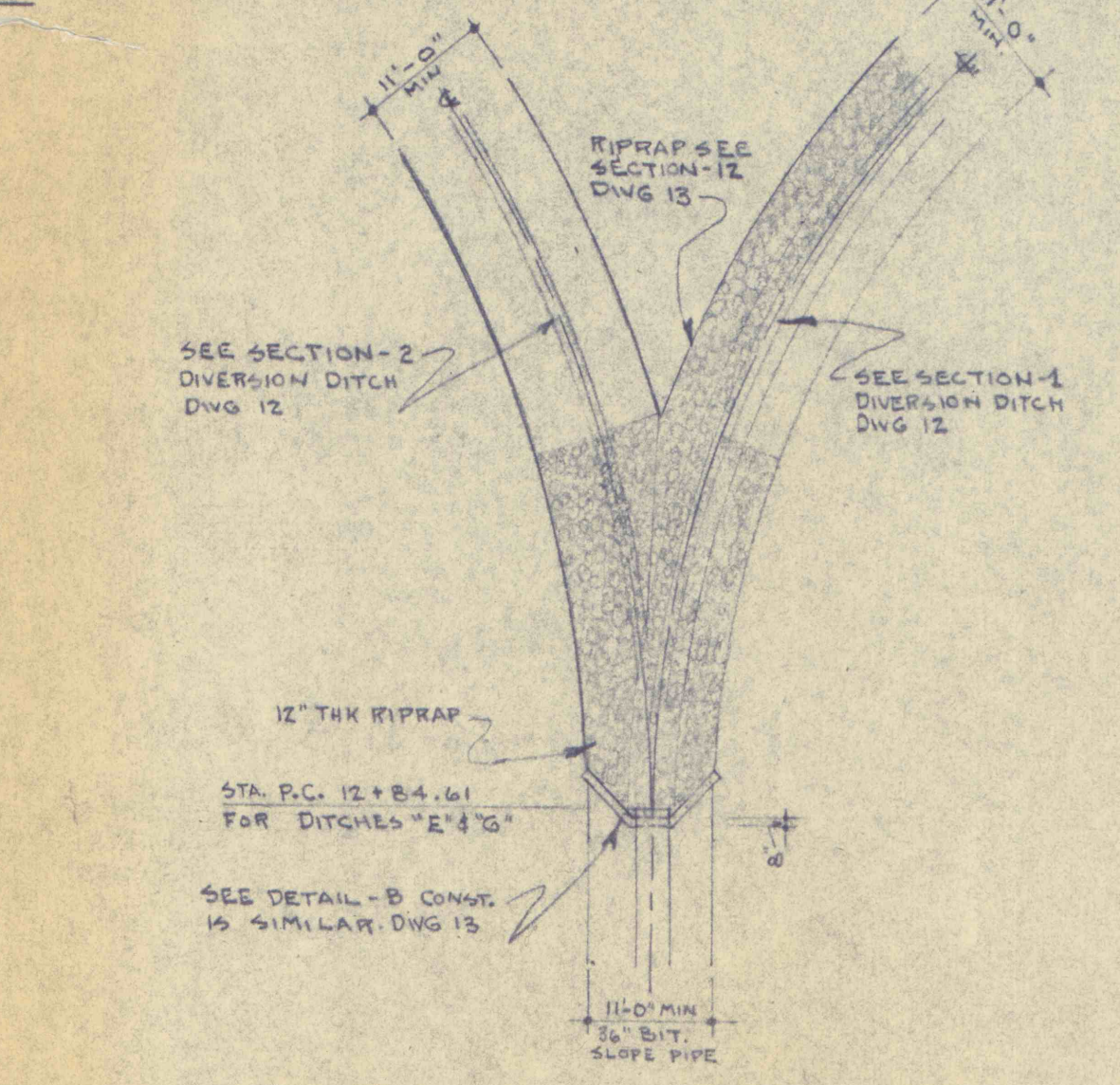
DETAIL OF 36" PIPE ON DITCH "A" - (M)
SCALE - 1/16" = 1' - 0"



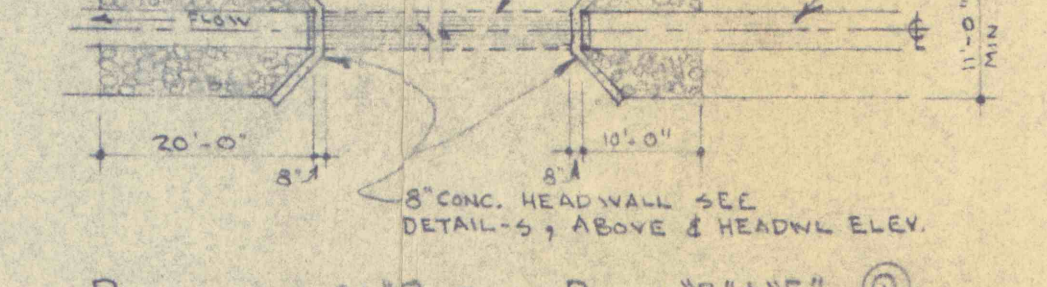
DETAIL OF 60" PIPE ON DITCH "C" - (N)
SCALE - 1/16" = 1' - 0"



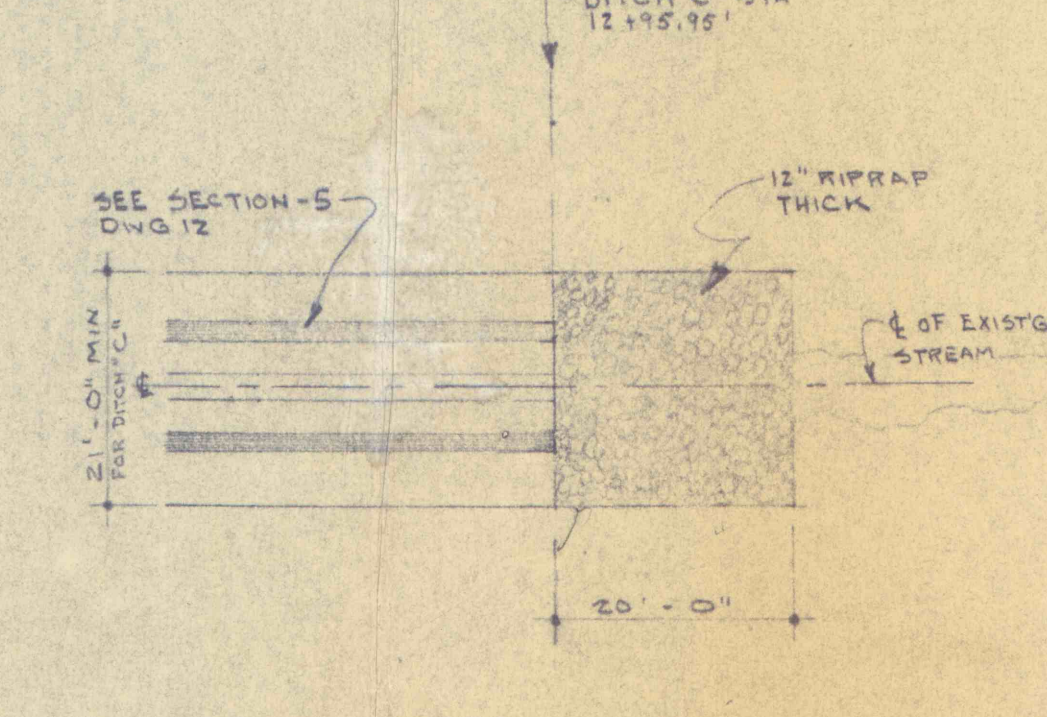
DETAIL OF CONN. DITCH "E" W/ "F" - (O)
SCALE - 1/16" = 1' - 0"



DETAIL OF CONN. DITCHES "E" & "G" - (P)
SCALE - 1/16" = 1' - 0"

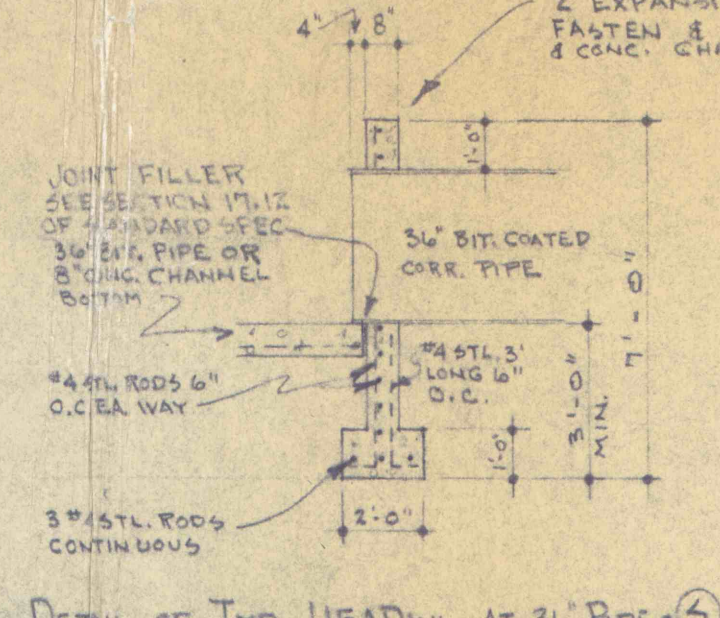


DETAIL OF 36" PIPE ON DITCH "B" & "E" - (Q)
SCALE - 1/16" = 1' - 0"



DETAIL AT END OF DITCH "C" - (R)
SCALE - 1/16" = 1' - 0"

NOTE: ALL EXPOSED CONC EDGES TO REC. 1" CHAMFER



DETAIL OF TYP. HEADWL AT 36" PIPE - (S)
SCALE - 1/4" = 1' - 0"

NO.	DATE	REVISION	APP.

SUBMITTED
 PROFESSIONAL
 APPROVED *Robert C. Pomeroy*
 CHIEF - DIVISION OF MINE RECLAMATION
 APPROVED *D. J. Pomeroy*
 DIRECTOR - BUREAU OF DESIGN

JOHN S. LUCKKENS, JR.
 ENGINEER
 M. E. P.

COMMONWEALTH OF PENNSYLVANIA
 DEPARTMENT OF ENVIRONMENTAL RESOURCES
 OFFICE OF RESOURCES MANAGEMENT
 PROJECT NO. SL 113-2
 MINE DRAINAGE POLLUTION ABATEMENT
 QUICK STARTS E, F and G
 SHAMOKIN CREEK WATERSHED
 JOHN S. LUCKKENS ASSOC.
 P. O. Box 190 Shamokin, Penna.

DETAILS

DRAWN BY	DATE	DRAWING NO.
CHECKED BY	January 2, 1974	14 of 14
	SCALE	
	As Shown	