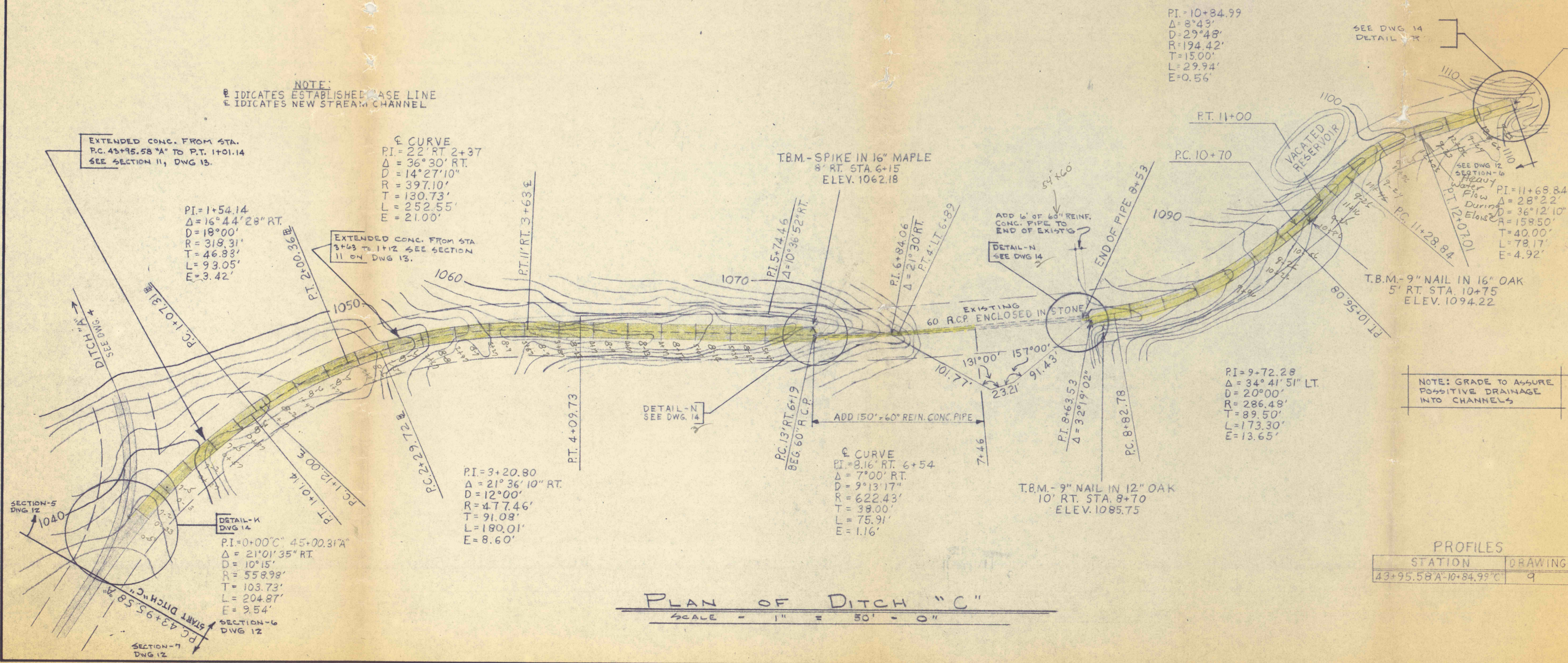


12 CC  
20  
117 C

NOTE:  
E INDICATES ESTABLISHED CASE LINE  
E INDICATES NEW STREAM CHANNEL



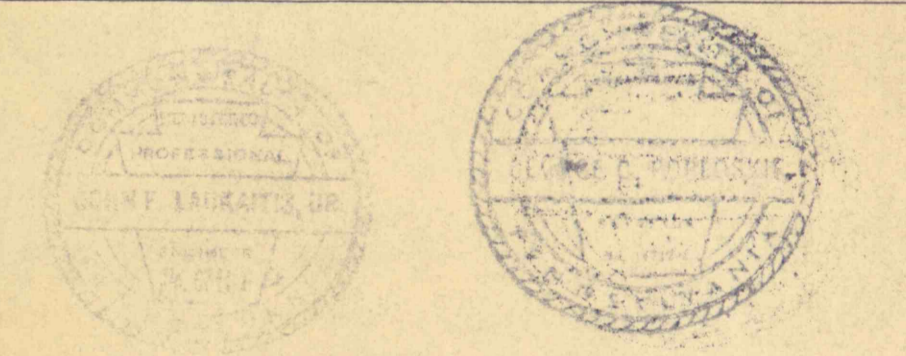
PI=10+84.99  
Δ=8°43'  
D=29°48'  
R=194.42'  
T=15.00'  
L=29.94'  
E=0.56'

SEE DWG. 14  
DETAIL N

DITCH "C"  
END OF WORK  
12+95.95

NO.	DATE	REVISION	APPR.

SUBMITTED  
 APPROVED *Albert C. Rameni*  
 CHIEF - DIVISION OF MINE RECLAMATION  
 APPROVED *duPerron*  
 DIRECTOR - BUREAU OF DESIGN



COMMONWEALTH OF PENNSYLVANIA  
 DEPARTMENT OF ENVIRONMENTAL RESOURCES  
 OFFICE OF RESOURCES MANAGEMENT  
 PROJECT NO. SL 113-2  
 MINE DRAINAGE POLLUTION ABATEMENT  
 QUICK STARTS E, F and G  
 SHAMOKIN CREEK WATERSHED

JOHN S. LUCKENS ASSOC.  
 P. O. Box 190  
 Shamokin, Penna.

### PLAN OF DITCH C

DRAWN BY  
 DATE January 2, 1974  
 CHECKE BY  
 SCALE 1" = 50'  
 DRAWING NO.  
 7 of 14

PROFILES

STATION	DRAWING
43+95.58 A-10+84.99 C	9

PLAN OF DITCH "C"  
 SCALE = 1" = 50' = 0"