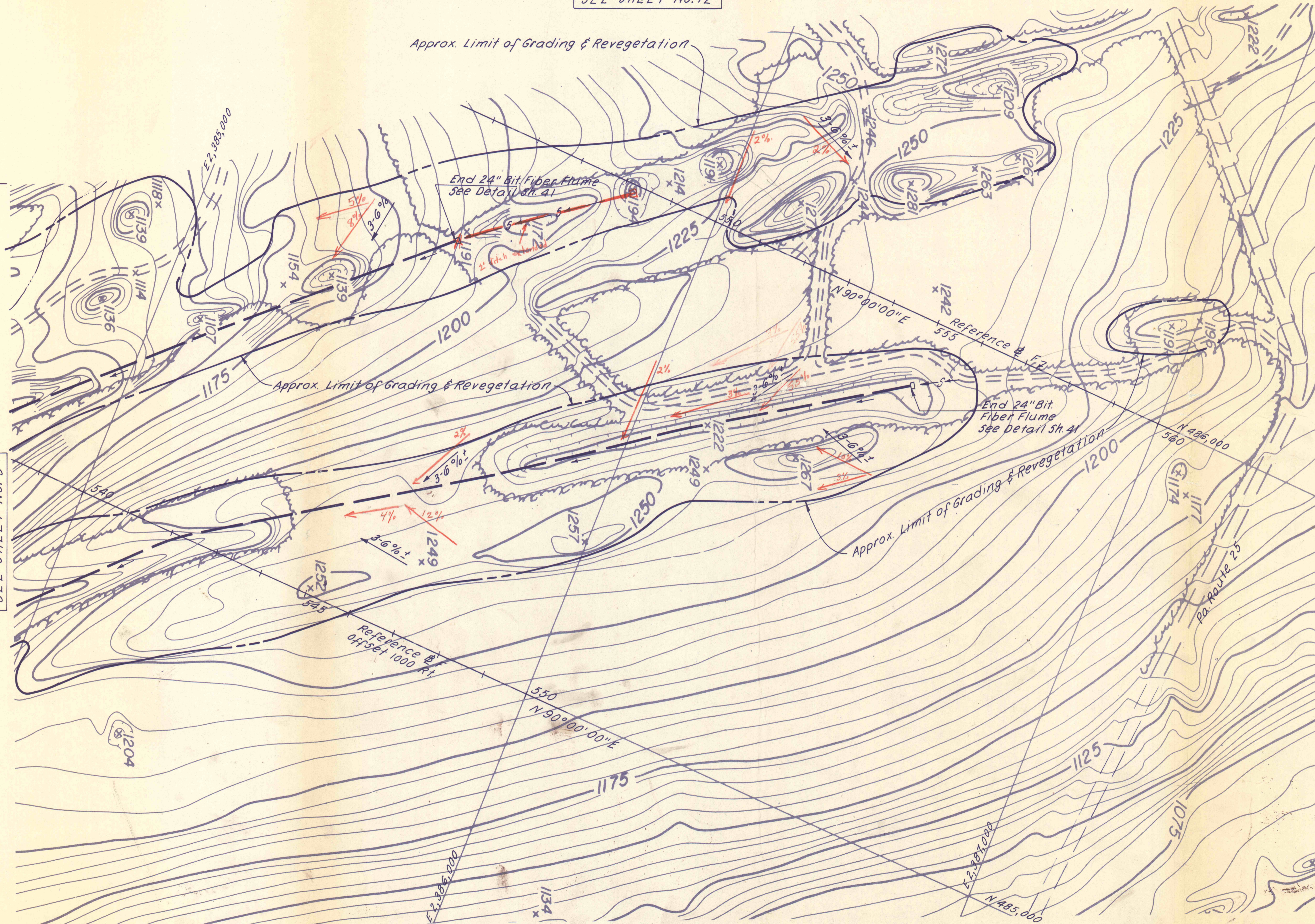
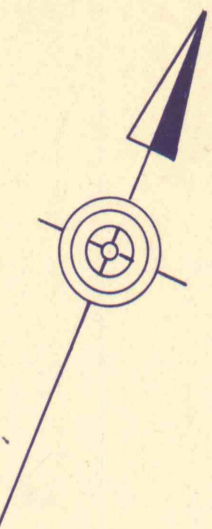


SEE SHEET NO. 12

Approx. Limit of Grading & Revegetation



SEE SHEET NO. 9

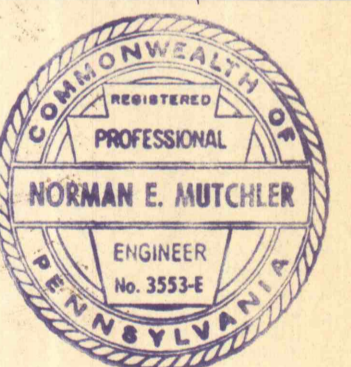
For Grading Sections
See Sheets No. 32

NO	DATE	REVISION	APPR.

SUBMITTED
Norman E. Mutchler
PROFESSIONAL

APPROVED
Robert C. Ramani
CHIEF - DIVISION OF MINE DRAINAGE RENOVATION

APPROVED
Sam Penzo
DIRECTOR - BUREAU OF CONSULTING SERVICES



COMMONWEALTH OF PENNSYLVANIA
DEPARTMENT OF ENVIRONMENTAL RESOURCES
OFFICE OF ENGINEERING AND CONSTRUCTION

PROJECT NO. SL-126-2-7

MINE DRAINAGE
POLLUTION ABATEMENT
SWATARA CREEK WATERSHED
SCHUYLKILL COUNTY

BERGER ASSOCIATES, INC.
Consulting Engineers
P.O. Box 1943 Harrisburg, Penna.

PLAN STRIP MINE RECLAMATION

DRAWN BY W. G.	DATE APR. 17, 1973	DRAWING NO. 10 of 43
CHECKED BY T. T.	SCALE 1" = 100'	

See MEAT