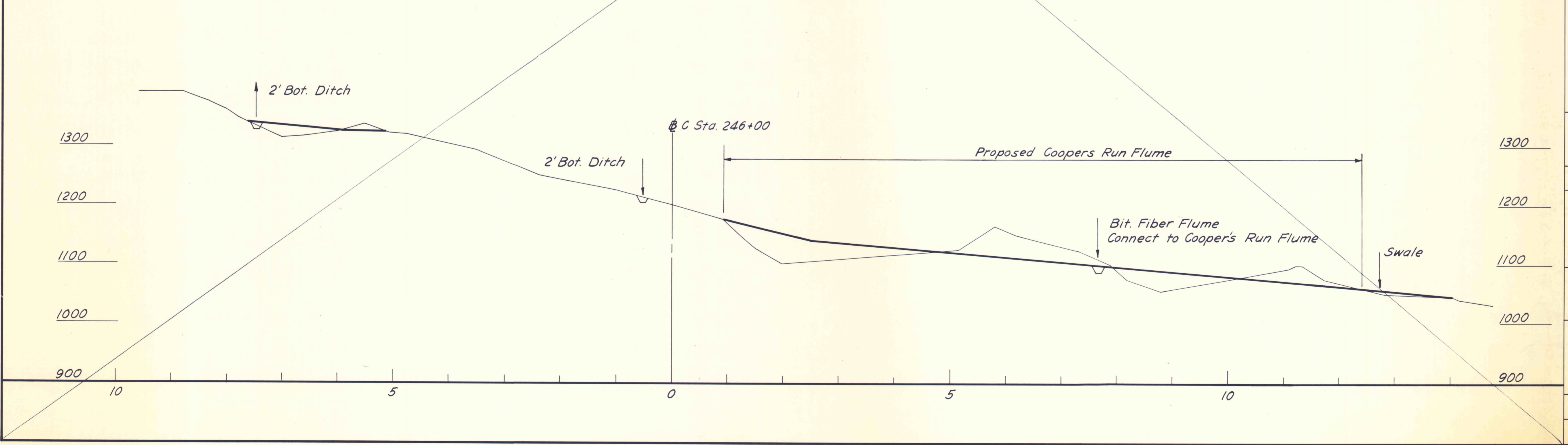
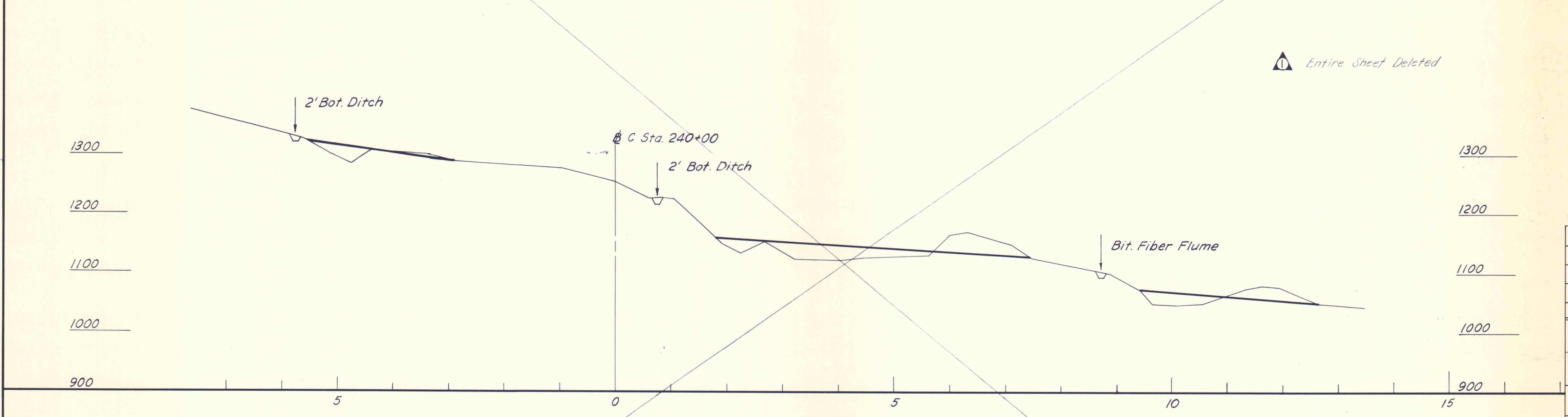


⚠ Entire Sheet Deleted



NO.	DATE	REVISION	APPR.
SUBMITTED			
Professional <i>Norman E. Mitchell</i>			
APPROVED			
Chief <i>Albert A. Ramey</i> CHIEF - DIVISION OF MINE DRAINAGE REHABILITATION			
APPROVED			
Director <i>Arthur P. ...</i> DIRECTOR - BUREAU OF CONSULTING SERVICES			



COMMONWEALTH OF PENNSYLVANIA
DEPARTMENT OF ENVIRONMENTAL RESOURCES
OFFICE OF ENGINEERING AND CONSTRUCTION

PROJECT NO. SL-126-2-7

MINE DRAINAGE
POLLUTION ABATEMENT
SWATARA CREEK WATERSHED
SCHUYLKILL COUNTY

BERGER ASSOCIATES, INC.
Consulting Engineers
P.O. Box 1943 Harrisburg, Penna.

GRADING SECTIONS

DRAWN BY	DATE	DRAWING NO.
W. G.	APR. 17, 1973	29 of 43
CHECKED BY	SCALE	
M. W.	1" = 100'	