

B.M. #20 Elev. 855.18  
Spike in 16" Oak Stump  
38.45' S.E. of Sta. 913+00

B.M. #21 Elev. 869.31  
Spike in 12" Oak  
40.23' S.W. of Sta. 919+00

B.M. #22 Elev. 875.72  
Spike in 8" Oak  
36.93' S.E. of Sta. 925+25

B.M. #23 Elev. 870.60  
Spike in Root 3' Dead Oak  
45.46' N.E. Sta. 929+99

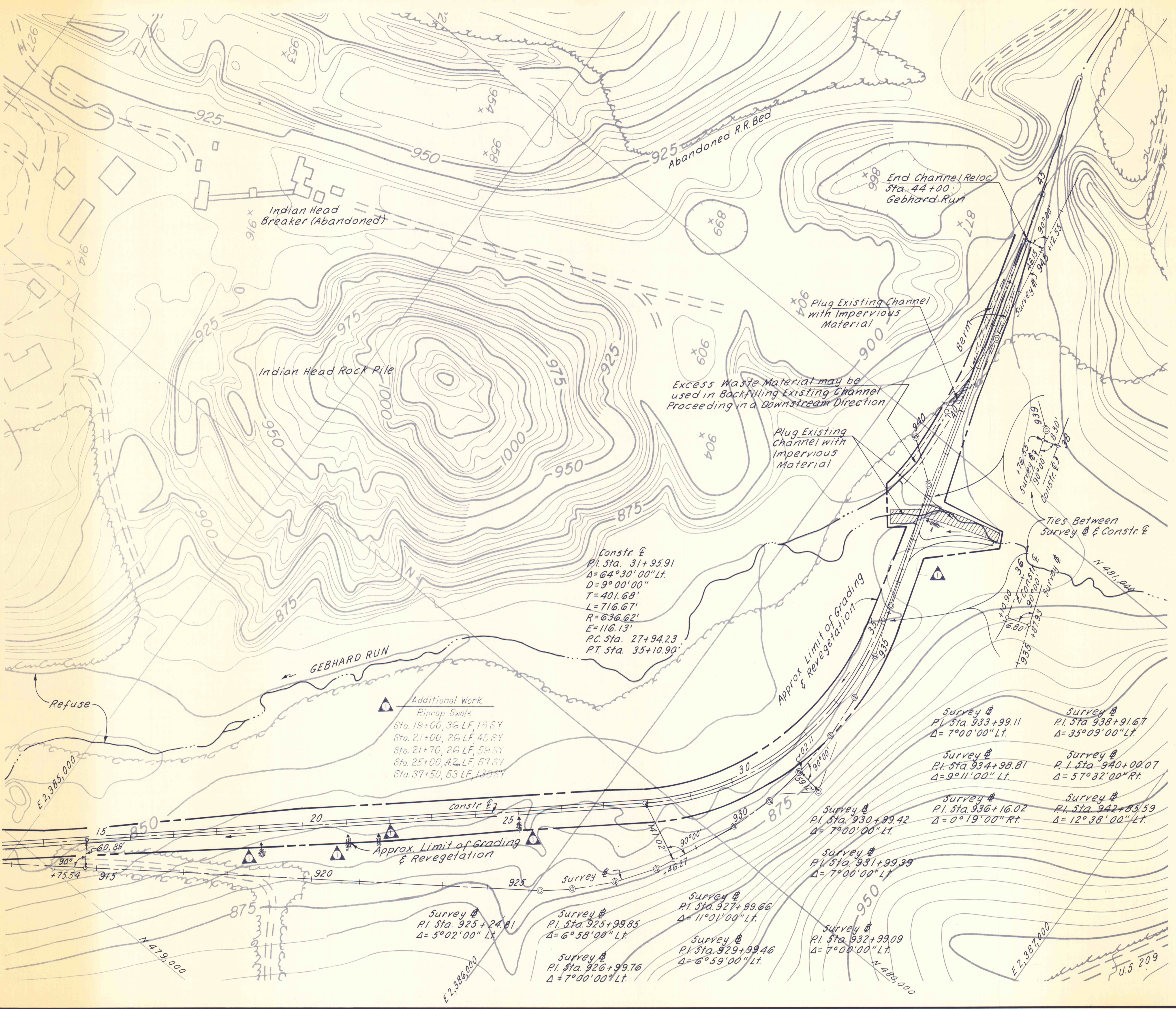
B.M. #24 Elev. 862.80  
Spike in Root 6" Tree  
56.69' N.E. Sta. 936+17

B.M. #25 Elev. 864.05  
Spike in 10" Oak  
100.59' N.E. of Sta. 938+92

For Typical Sections of  
Gebhard Run Channel Reloc.  
See Sheet No. 18

For Profile of Gebhard Run  
Channel Reloc. See Sheet No. 22

SEE SHEET NO. 18



AS BUILT			
NO.	DATE	REVISION	APPR.
SUBMITTED <i>Norman E. Mitchell</i>			
APPROVED <i>Albert A. Ranier</i> CHIEF - DIVISION OF MINE DRAINAGE REHABILITATION			
APPROVED <i>Albert Ranier</i> DIRECTOR - BUREAU OF CONSULTING SERVICES			



COMMONWEALTH OF PENNSYLVANIA  
DEPARTMENT OF ENVIRONMENTAL RESOURCES  
OFFICE OF ENGINEERING AND CONSTRUCTION

PROJECT NO. SL-126-2-7

MINE DRAINAGE  
POLLUTION ABATEMENT  
SWATARA CREEK WATERSHED  
SCHUYLKILL COUNTY

BERGER ASSOCIATES, INC.  
Consulting Engineers

P.O. Box 1943 Harrisburg, Penna.

PLAN  
GEBHARD RUN RELOC.

DRAWN BY W.G.	DATE APR. 17, 1973	DRAWING NO. 19 of 43
CHECKED BY T.T.	SCALE 1" = 100'	