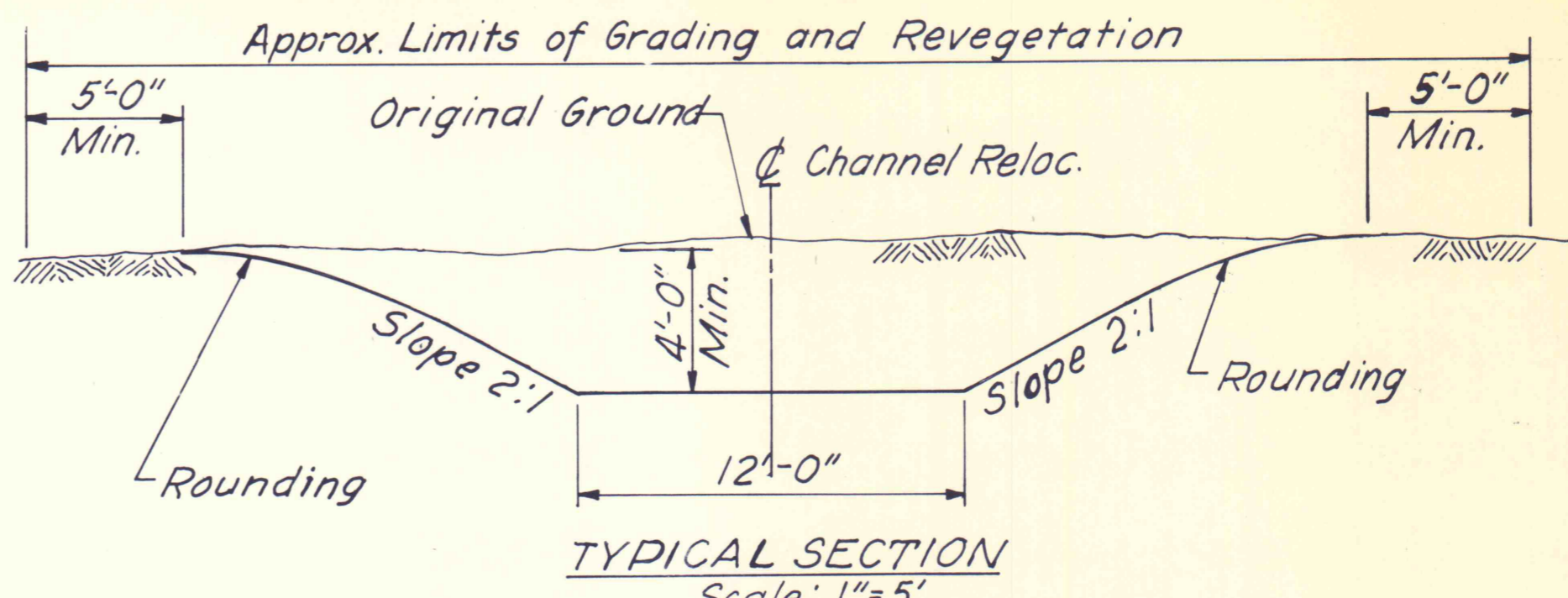


TYPICAL SECTION
Scale: 1"=5'

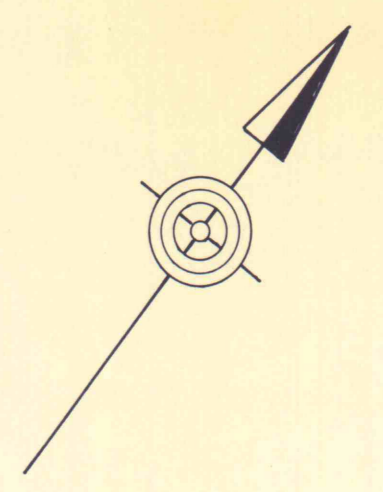
Sta. 0+00 to Sta. 2+00 (Lower Gebhard Run Relocation)
 * Sta. 4+00 to Sta. 6+09 (Lower Gebhard Run Relocation)
 Sta. 41+00 to Sta. 43+00 (Gebhard Run Relocation)

* Riprap to be placed only where shown on Plan

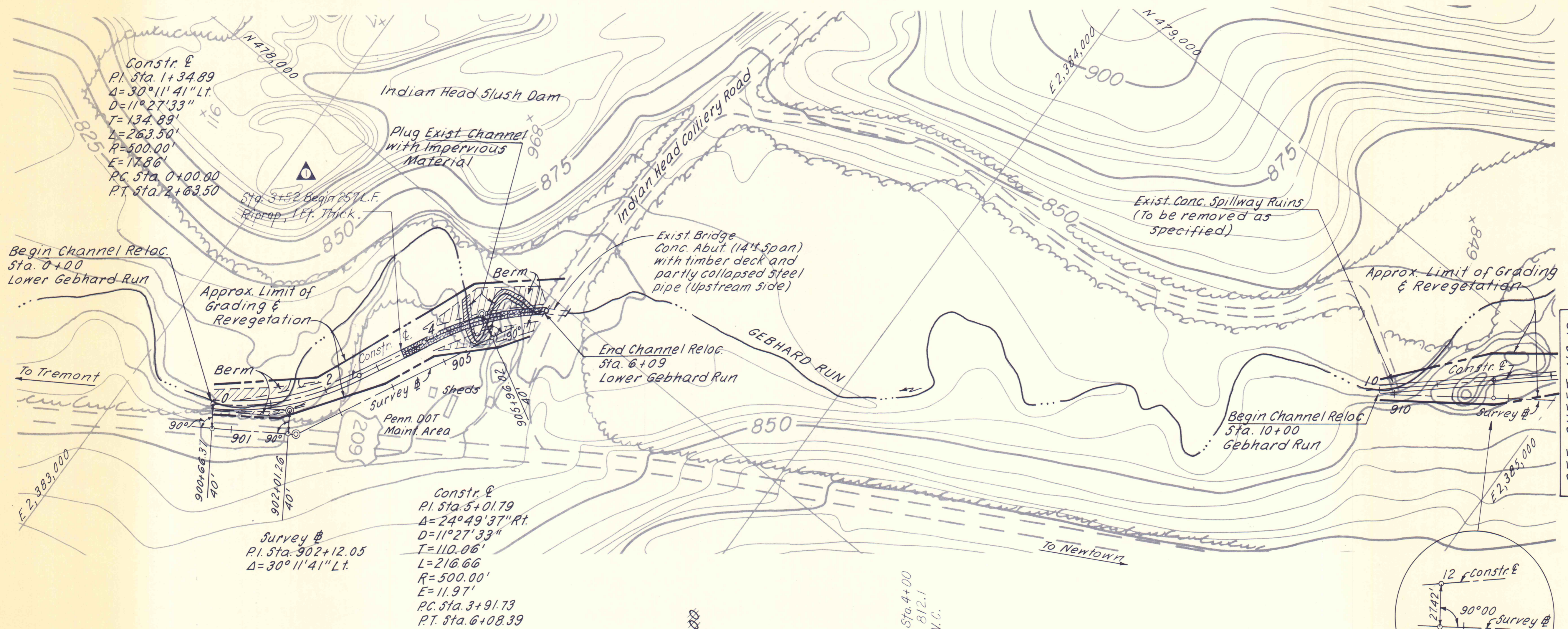


TYPICAL SECTION
Scale: 1"=5'

* Sta. 2+00 to Sta. 4+00 (Lower Gebhard Run Relocation)
 Sta. 10+00 to Sta. 41+00 (Gebhard Run Relocation)
 Sta. 43+00 to Sta. 44+00 (Gebhard Run Relocation)



B.M.# 18 Elev. 824.97
 Drill Hole in N.W. Wingwall of
 Bridge Abutment on Indian
 Head Colliery Road
 Sta. 907+02



SEE SHEET NO. 19

NO.	DATE	REVISION	APPR.
1-13-77		AS BUILT	
SUBMITTED <i>Norman E. Mutchler</i>			
APPROVED <i>Albert A. Rameis</i> CHIEF - DIVISION OF MINE DRAINAGE REHABILITATION			
APPROVED <i>dwPerez</i> DIRECTOR - BUREAU OF CONSULTING SERVICES			



COMMONWEALTH OF PENNSYLVANIA
 DEPARTMENT OF ENVIRONMENTAL RESOURCES
 OFFICE OF ENGINEERING AND CONSTRUCTION

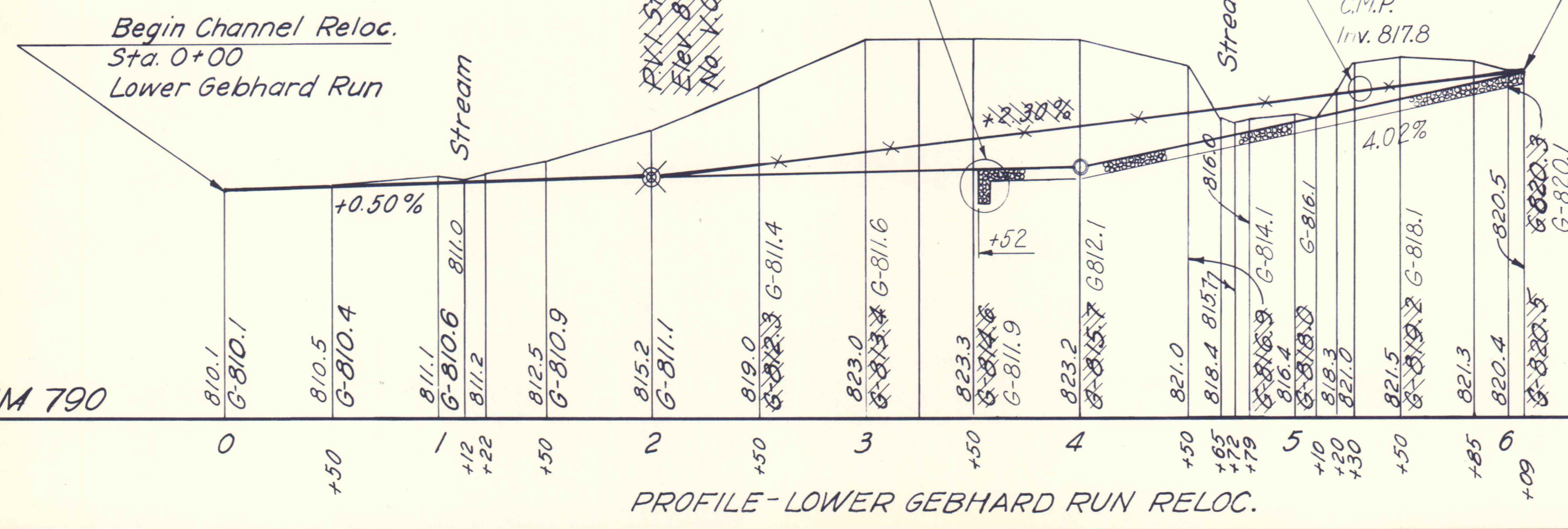
PROJECT NO. SL-126-2-7

MINE DRAINAGE
 POLLUTION ABATEMENT
 SWATARA CREEK WATERSHED
 SCHUYLKILL COUNTY

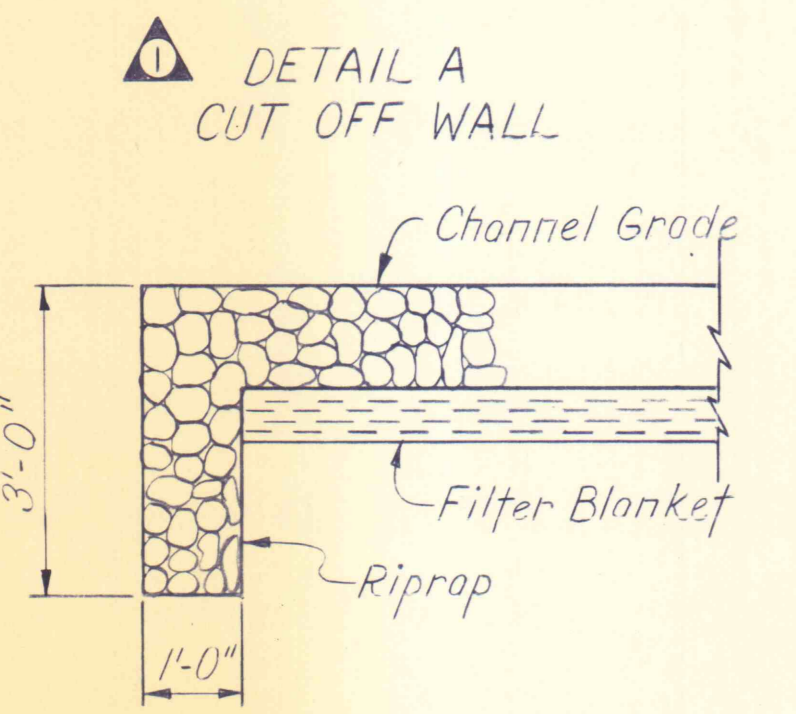
BERGER ASSOCIATES, INC.
 Consulting Engineers
 P.O. Box 1943 Harrisburg, Penna.

PLAN AND PROFILE
 LOWER GEBHARD RUN RELOC.

DRAWN BY W. G.	DATE APR. 17, 1973	DRAWING NO. 18 of 43
CHECKED BY T. T.	SCALE 1" = 100'	



Scale: Horiz. 1"=50'
 Vert. 1"=10'



DETAIL A
 CUT OFF WALL