

B.M.#7 Elev. 983.20
72' East of Survey # Sta. 403+00
Spike in Base of P.P.&L. Pole #H-CI-2

For 1" = 100' Plan See Sheet No. 7
For Channel Profile See Sheet No. 21
For Typical Sections See Sheet No. 40

B.M.#8 Elev. 1058.31
17' N.W. of Survey # Sta. 417+42
Spike in Base of 30" White Oak

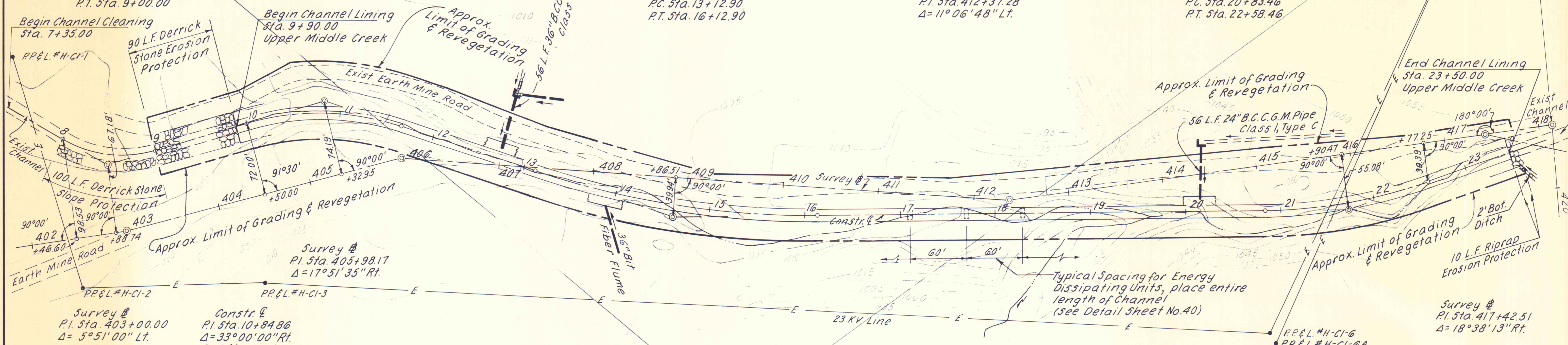
Constr. &
P.I. Sta. 8+52.67
 $\Delta = 44^{\circ}00'00''$
T = 52.52'
L = 99.83'
R = 130.00'
E = 10.21'
P.C. Sta. 8+00.17
P.T. Sta. 9+00.00

Constr. &
P.I. Sta. 14+64.15
 $\Delta = 18^{\circ}00'00''$ Lt.
D = 6^{\circ}00'00''
T = 151.25'
L = 300.00'
R = 954.93'
E = 11.90'
P.C. Sta. 13+12.90
P.T. Sta. 16+12.90

Survey #
P.I. Sta. 412+37.28
 $\Delta = 11^{\circ}06'48''$ Lt.

Constr. &
P.I. Sta. 21+17.65
 $\Delta = 17^{\circ}30'00''$ Lt.
D = 10^{\circ}00'00''
T = 88.19'
L = 175.00'
R = 572.96'
E = 6.75'
P.C. Sta. 20+83.46
P.T. Sta. 22+58.46

Sta. 418+08.00 Bk. =
Sta. 419+37.00 Ahd
Reference # E



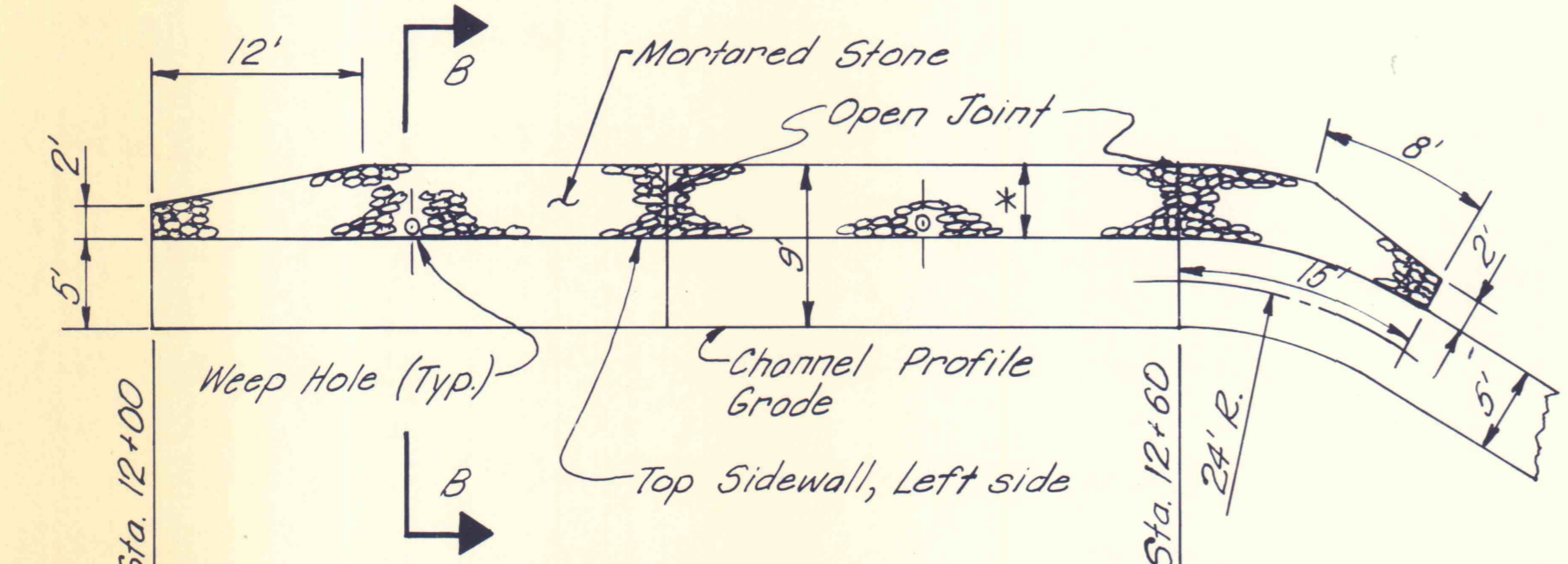
Survey #
P.I. Sta. 403+00.00
 $\Delta = 5^{\circ}51'00''$ Lt.

Constr. &
P.I. Sta. 10+84.86
 $\Delta = 33^{\circ}00'00''$ Rt.
D = 20^{\circ}00'00''
T = 84.86'
L = 165.00'
R = 286.48'
E = 12.31'
P.C. Sta. 10+00.00
P.T. Sta. 11+65.00

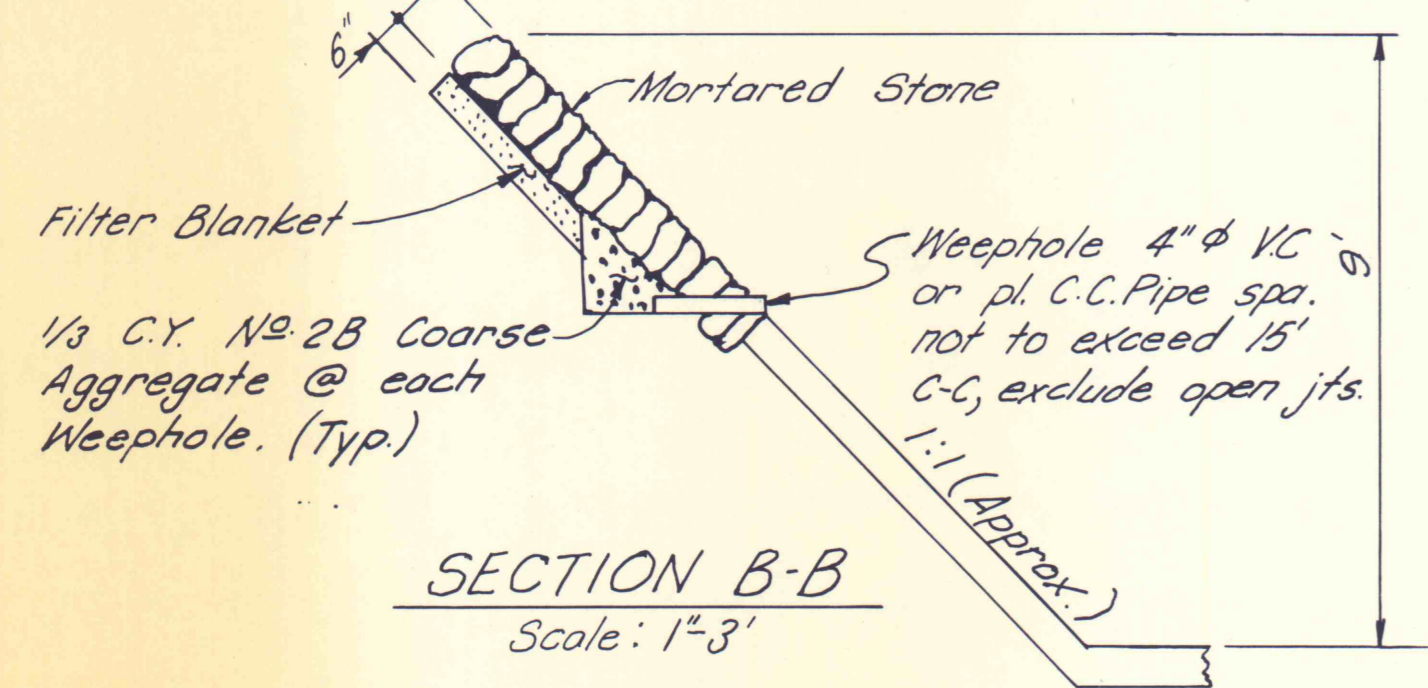
Survey #
P.I. Sta. 417+42.51
 $\Delta = 18^{\circ}38'13''$ Rt.

MIDDLE CREEK CHANNEL LINING
DETAIL A

Reference Drawing 16 of 43.

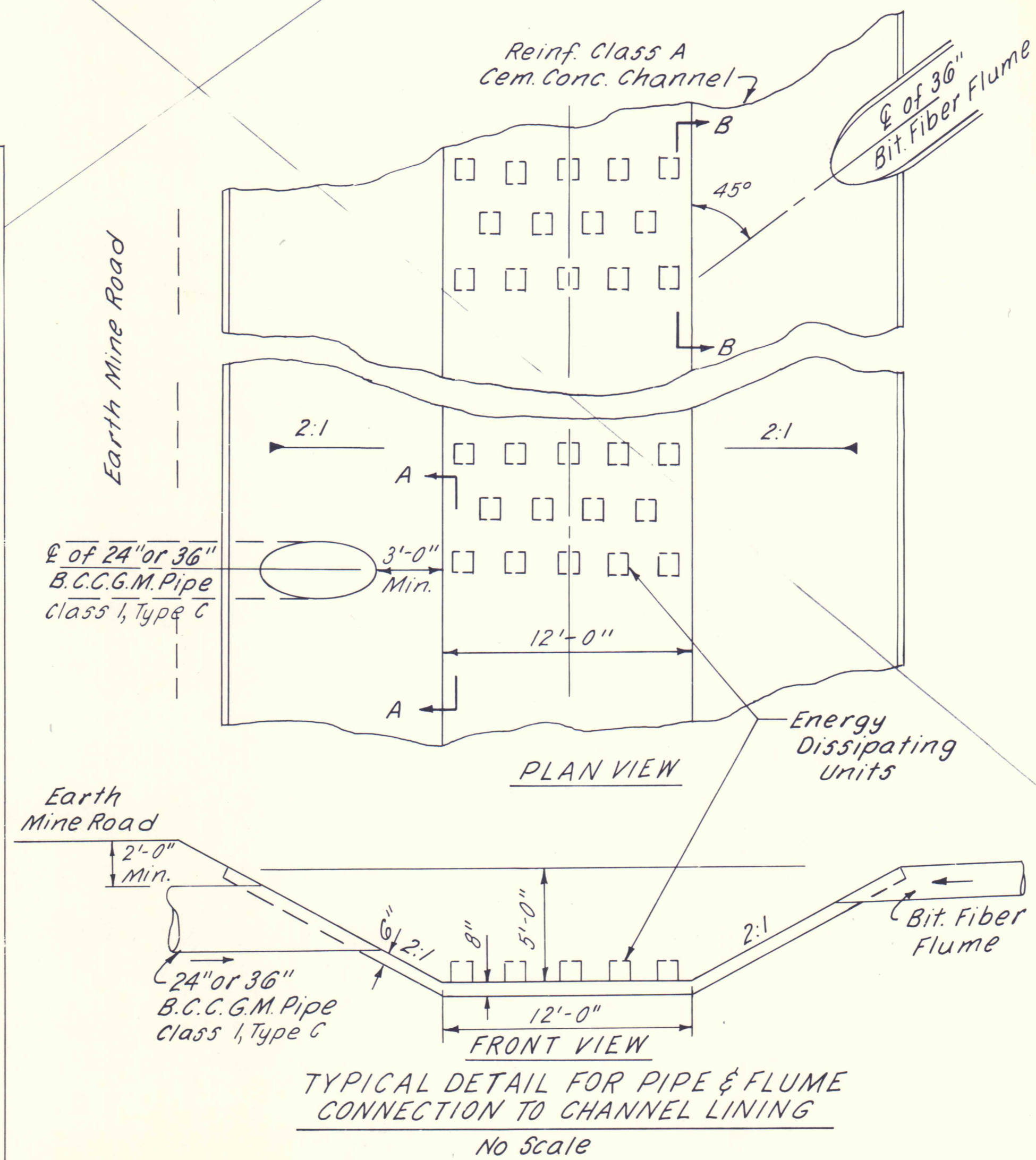


VIEW PERPENDICULAR TO FACE OF LEFT SIDEWALL
Scale: 1" = 10'

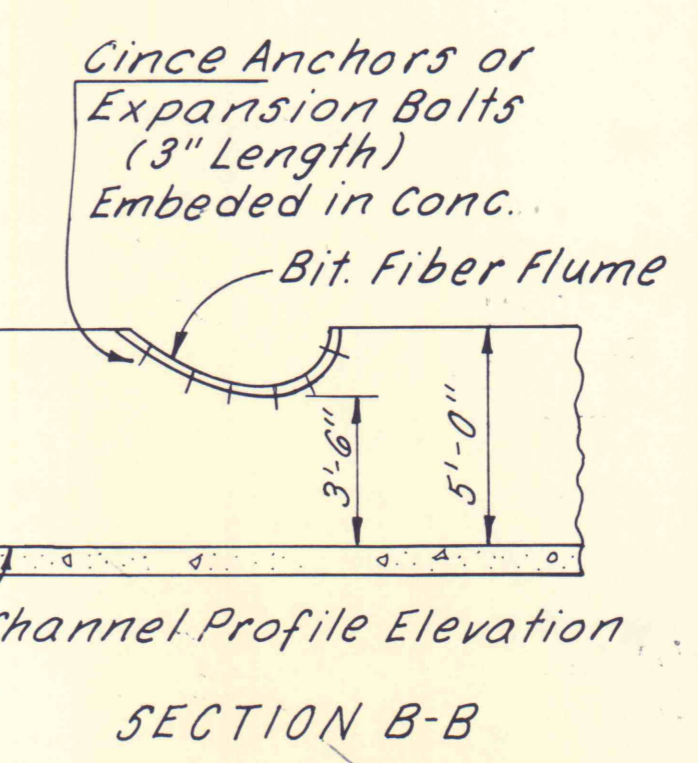
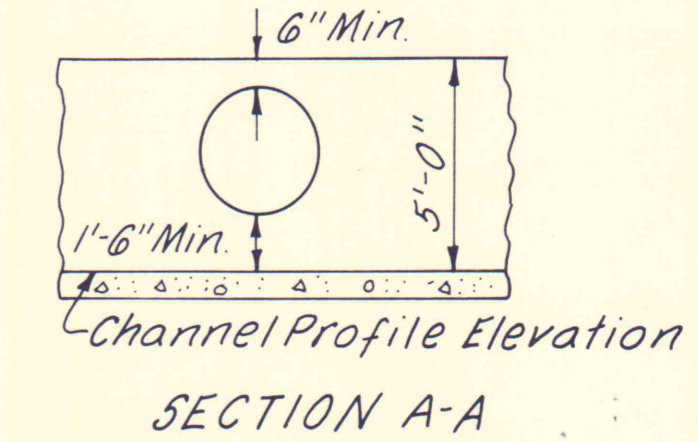


SECTION B-B
Scale: 1" = 3'

Notes:
* Dimension as required to provide 9' vertical height from bottom of flume to top of mortared stone.
1. All measurements based on top of left sidewall.
2. Construction to be in accordance with Sect. 661 Form 408.



TYPICAL DETAIL FOR PIPE & FLUME
CONNECTION TO CHANNEL LINING
No Scale



1-13-77	AS BUILT		
1-13-77	AS BUILT		
NO	DATE	REVISION	APPR.
SUBMITTED <i>Norman E. Hatcher</i>			
PROFESSIONAL			
APPROVED <i>Albert C. Romani</i>			
CHIEF - DIVISION OF MINE DRAINAGE REHABILITATION			
APPROVED <i>Jim Penney</i>			
DIRECTOR - BUREAU OF CONSULTING SERVICES			
COMMONWEALTH OF PENNSYLVANIA DEPARTMENT OF ENVIRONMENTAL RESOURCES OFFICE OF ENGINEERING AND CONSTRUCTION			
PROJECT NO. SL-126-2-7.			
MINE DRAINAGE POLLUTION ABATEMENT SWATARA CREEK WATERSHED SCHUYLKILL COUNTY			
BERGER ASSOCIATES, INC. Consulting Engineers			
P.O. Box 1943		Harrisburg, Penna.	
UPPER MIDDLE CREEK CHANNEL LINING			
DRAWN BY W. G.	DATE APR 17, 1973	DRAWING NO. 17 of 43	
CHECKED BY M. W.	SCALE 1" = 50'		