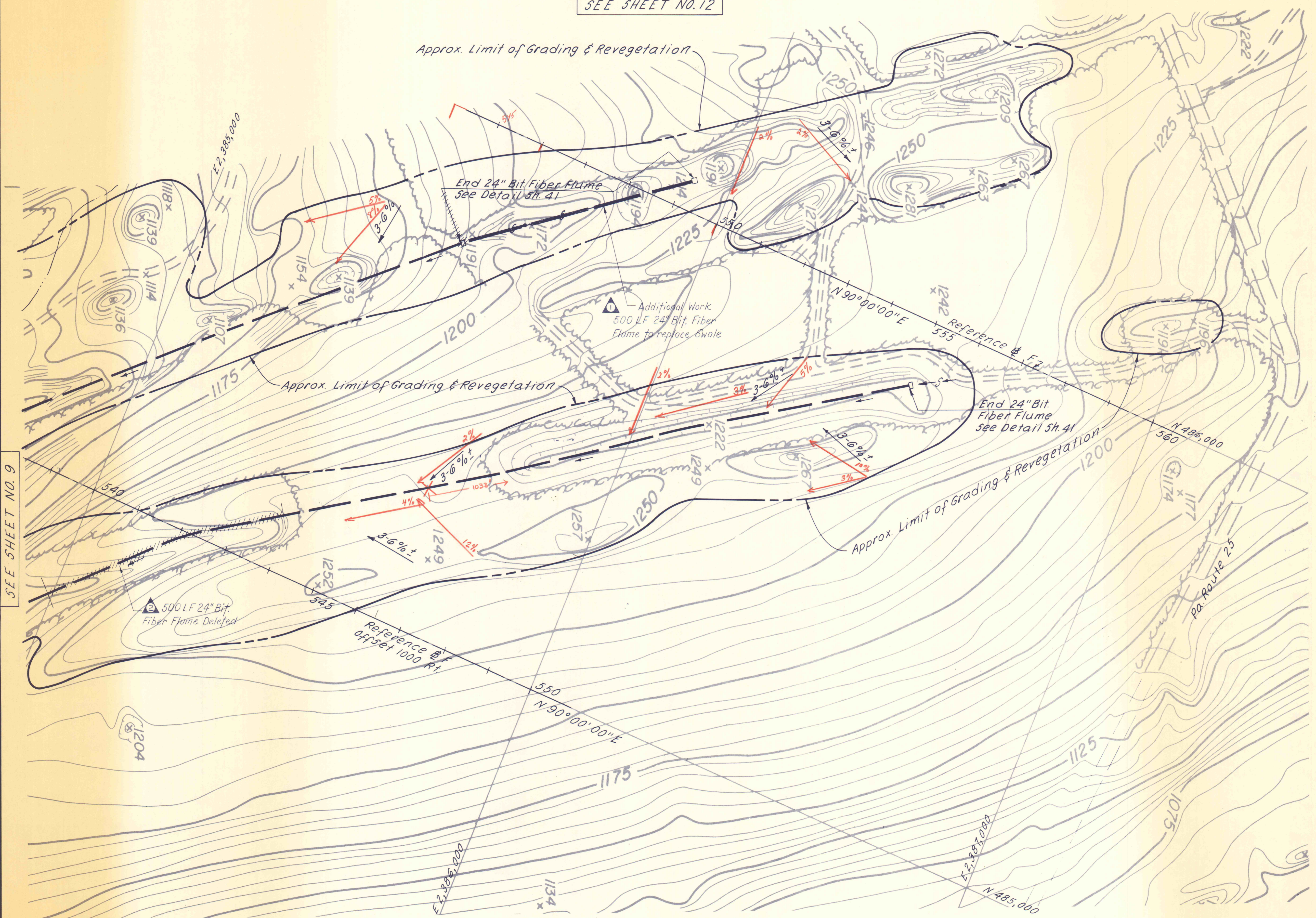
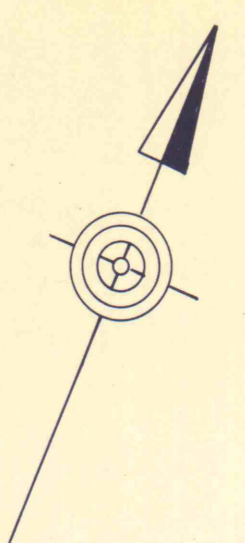


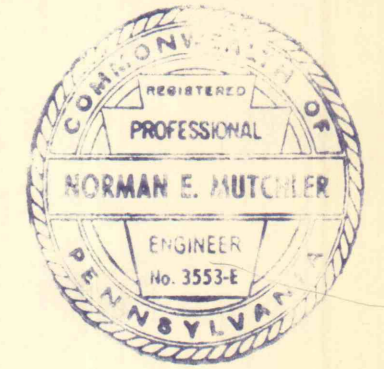
SEE SHEET NO. 12



SEE SHEET NO. 9

For Grading Sections  
See Sheets No. 32

1-13-77	AS BUILT		
1-13-77	AS BUILT		
NO	DATE	REVISION	APPR.
SUBMITTED <i>Norman E. Muttler</i>			
APPROVED <i>Albert S. Romani</i> CHIEF - DIVISION OF MINE DRAINAGE REHABILITATION			
APPROVED <i>W. Pennington</i> DIRECTOR - BUREAU OF CONSULTING SERVICES			



COMMONWEALTH OF PENNSYLVANIA  
DEPARTMENT OF ENVIRONMENTAL RESOURCES  
OFFICE OF ENGINEERING AND CONSTRUCTION

PROJECT NO. SL-126-2-7

MINE DRAINAGE  
POLLUTION ABATEMENT  
SWATARA CREEK WATERSHED  
SCHUYLKILL COUNTY

BERGER ASSOCIATES, INC.  
Consulting Engineers

P.O. Box 1943 Harrisburg, Penna.

PLAN  
STRIP MINE RECLAMATION

DRAWN BY W. G.	DATE APR. 17, 1973	DRAWING NO. 10 of 43
CHECKED BY T. T.	SCALE 1" = 100'	