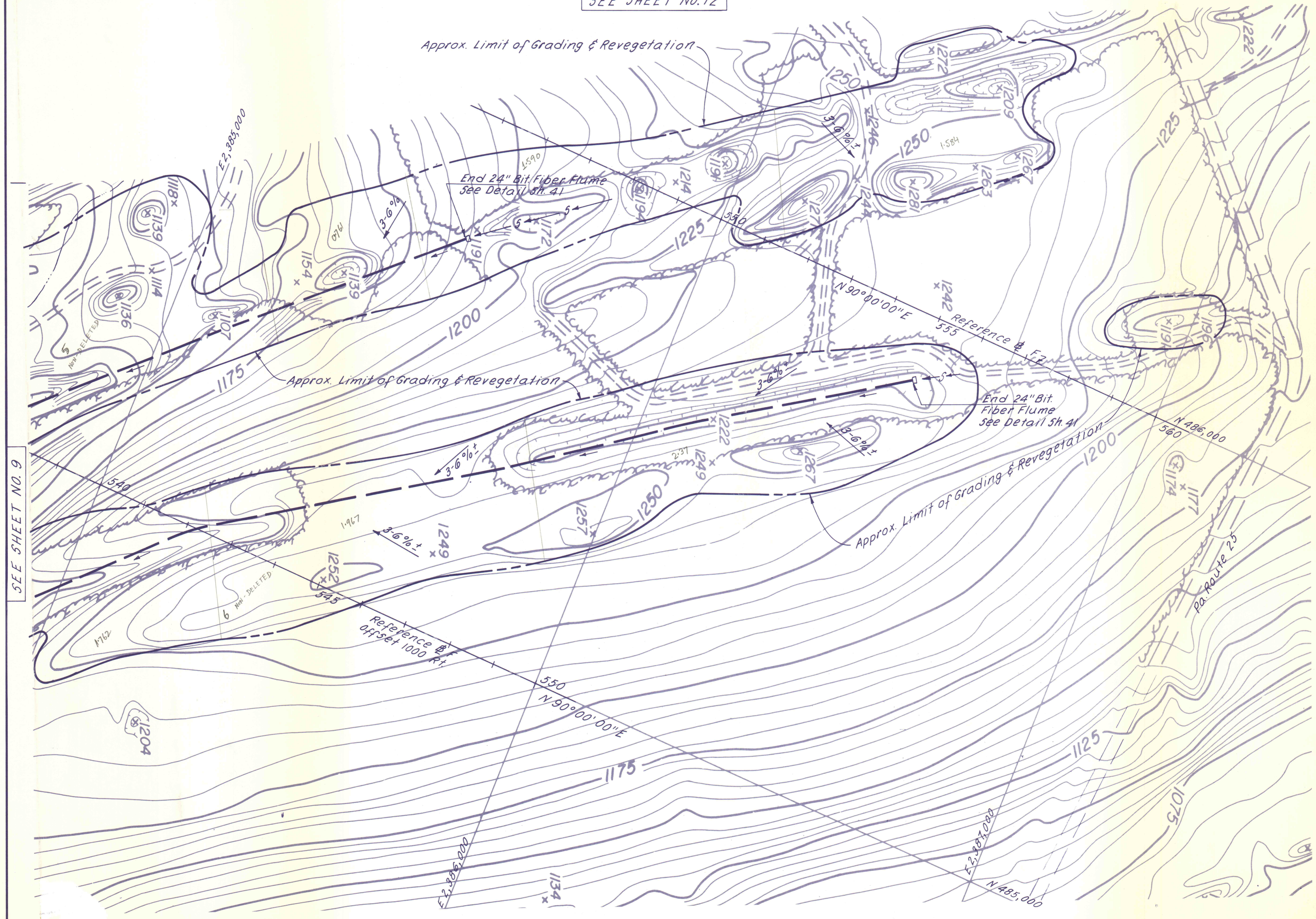
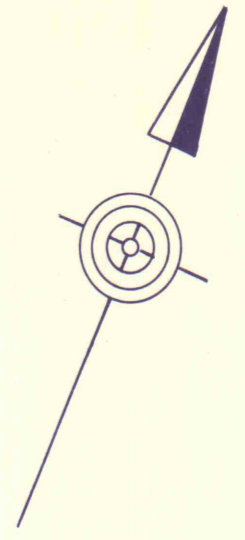


SEE SHEET NO. 12



SEE SHEET NO. 9

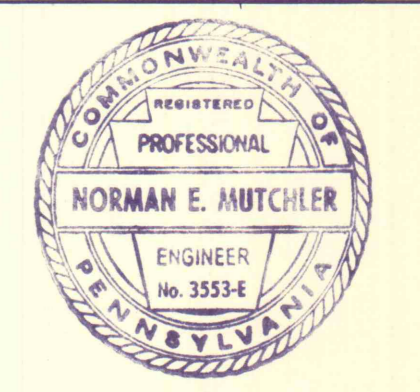
For Grading Sections  
See Sheets No. 32

| NO. | DATE | REVISION | APPR. |
|-----|------|----------|-------|
|     |      |          |       |
|     |      |          |       |
|     |      |          |       |
|     |      |          |       |

SUBMITTED  
Norman E. Mutchler  
PROFESSIONAL

APPROVED  
Albert C. Ranieri  
CHIEF - DIVISION OF MINE DRAINAGE REHABILITATION

APPROVED  
D. Pennington  
DIRECTOR - BUREAU OF CONSULTING SERVICES



COMMONWEALTH OF PENNSYLVANIA  
DEPARTMENT OF ENVIRONMENTAL RESOURCES  
OFFICE OF ENGINEERING AND CONSTRUCTION

PROJECT NO. SL-126-2-7

MINE DRAINAGE  
POLLUTION ABATEMENT  
SWATARA CREEK WATERSHED  
SCHUYLKILL COUNTY

BERGER ASSOCIATES, INC.  
Consulting Engineers

P.O. Box 1943 Harrisburg, Penna.

PLAN  
STRIP MINE RECLAMATION

|                     |                       |                         |
|---------------------|-----------------------|-------------------------|
| DRAWN BY<br>W. G.   | DATE<br>APR. 17, 1973 | DRAWING NO.<br>10 of 43 |
| CHECKED BY<br>T. T. | SCALE<br>1" = 100'    |                         |