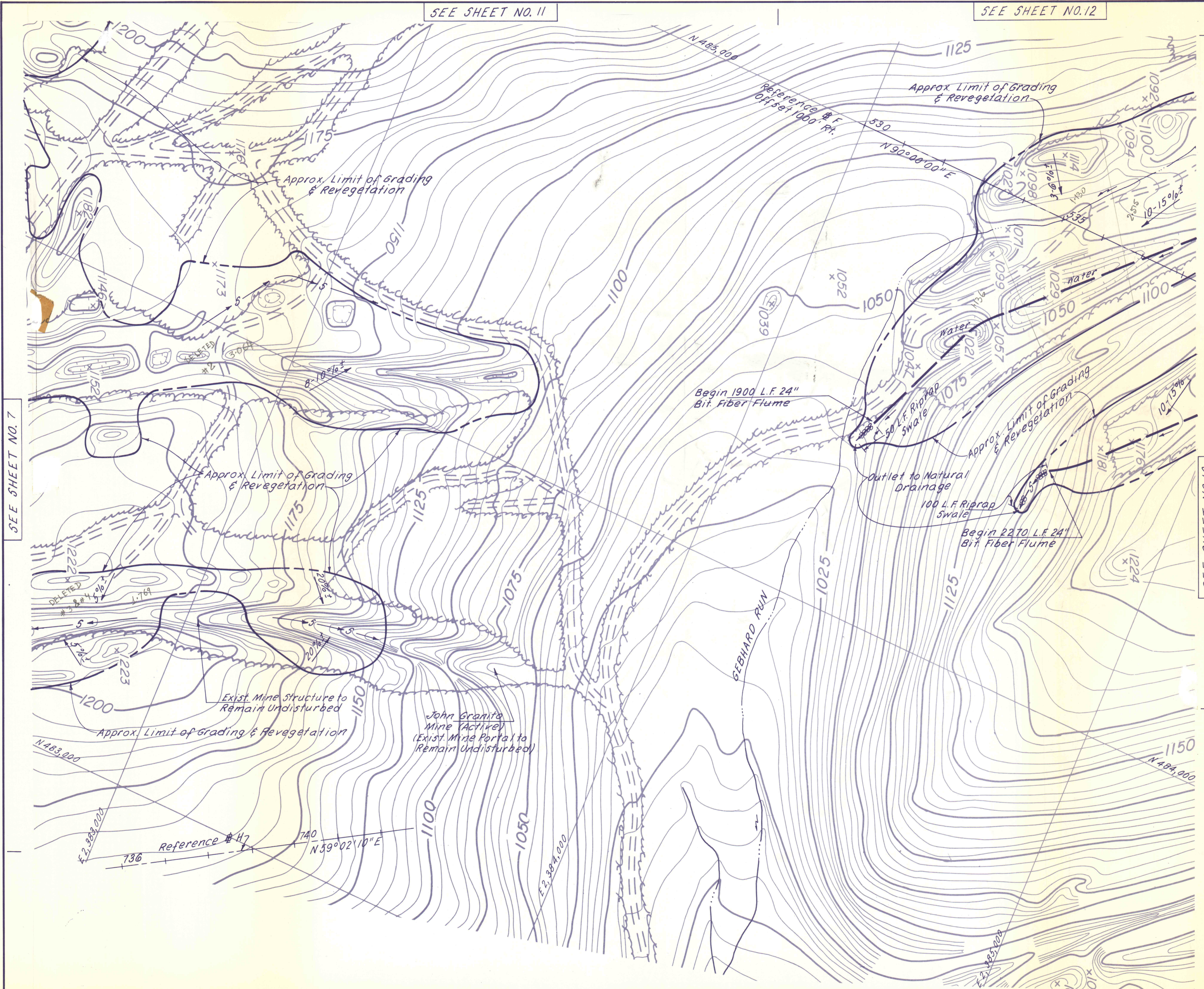


SEE SHEET NO. 11

SEE SHEET NO. 12



SEE SHEET NO. 7

SEE SHEET NO. 10

SEE SHEET NO. 14

For Grading sections  
see Sheet No. 32 & 38

NO	DATE	REVISION	APPR.

SUBMITTED  
*Norman E. Mitchell*  
PROFESSIONAL

APPROVED  
*Albert C. Ramin*  
CHIEF - DIVISION OF MINE DRAINAGE REHABILITATION

APPROVED  
*Al P. Penege*  
DIRECTOR - BUREAU OF CONSULTING SERVICES



COMMONWEALTH OF PENNSYLVANIA  
DEPARTMENT OF ENVIRONMENTAL RESOURCES  
OFFICE OF ENGINEERING AND CONSTRUCTION

PROJECT NO. SL-126-2-7

MINE DRAINAGE  
POLLUTION ABATEMENT  
SWATARA CREEK WATERSHED  
SCHUYLKILL COUNTY

BERGER ASSOCIATES, INC.  
Consulting Engineers

P.O. Box 1943 Harrisburg, Penna.

PLAN  
STRIP MINE RECLAMATION

DRAWN BY W.G.	DATE APR. 17, 1973	DRAWING NO.
CHECKED BY T.T.	SCALE 1" = 100'	9 of 43