

STOP WORK
STA. 29+10

CONSTRUCTION STATION

SURVEY STATION

1050

29+00

1040

15+00 [END 6:1 FLARED EARTH CHANNEL AT STA. 29+10]

NOTE:

STA. 28+95 & RETAINING EMB., 10' WIDE TOP AT EL. 1046.0

28+66

14+70 [END FLARED REINFORCED CONCRETE CHANNEL, BEGIN 6:1 FLARED EARTH CHANNEL]

1040

28+46

14+50 [END 6' REINFORCED CONCRETE CHANNEL, BEGIN FLARED REINFORCED CONCRETE CHANNEL]

1040

28+10

1040

27+92

1040

27+45

1040

26+94

1030

26+43

1030

25+93

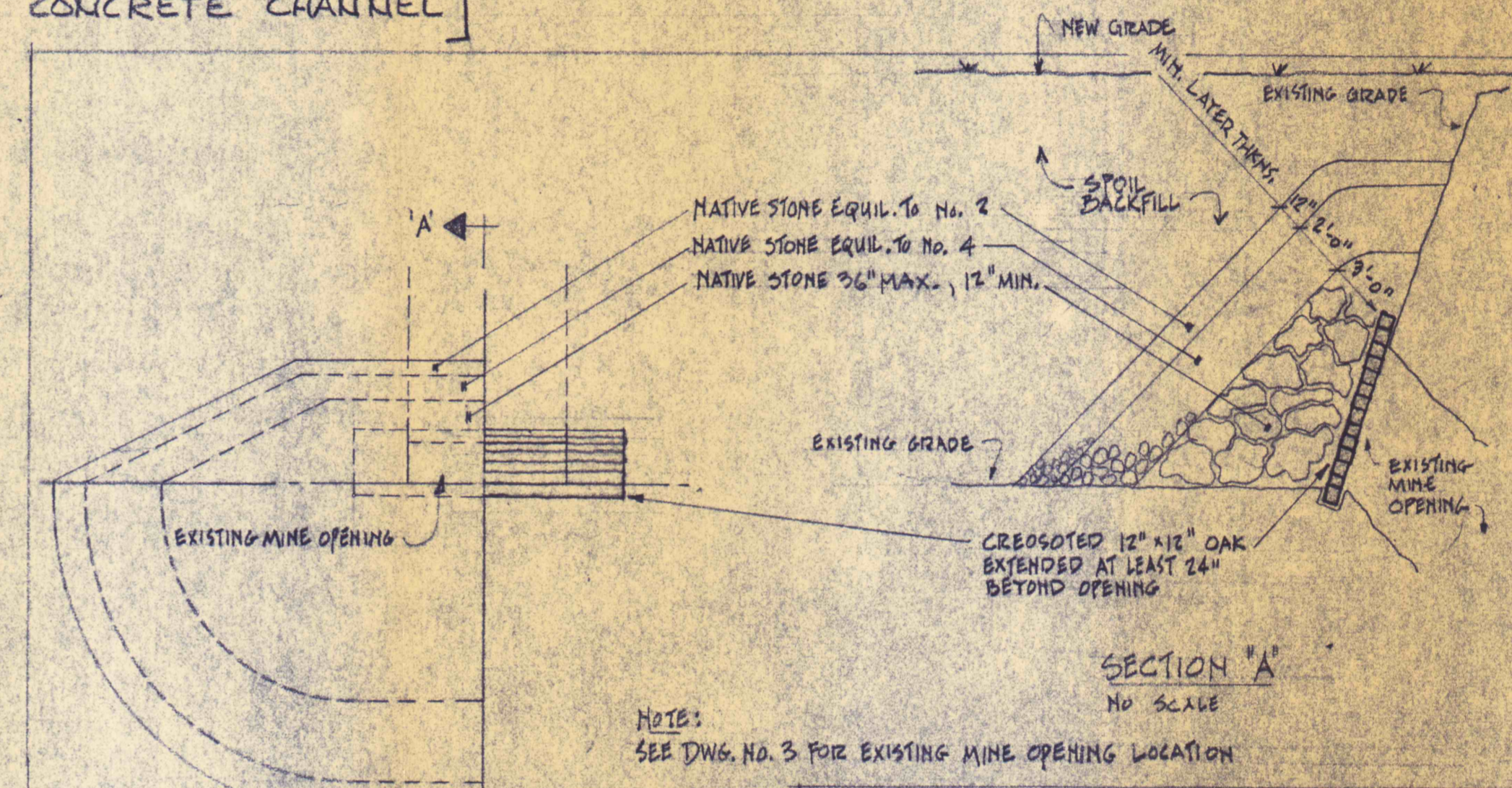
1030

25+42

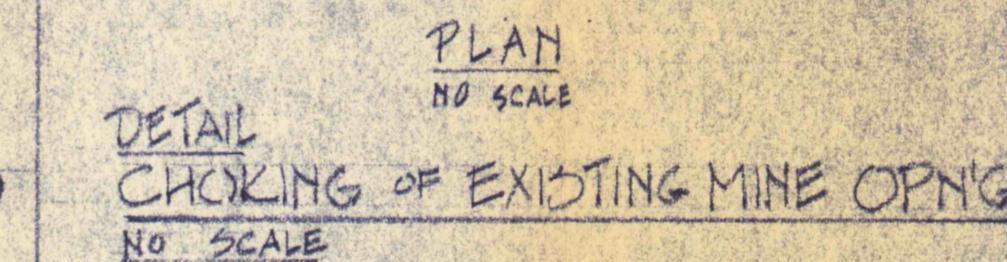
1020

24+84

1020



NOTES:
SEE DWG. NO. 3 FOR EXISTING MINE OPENING LOCATION



(a) Mine openings plugged with very large flat rocks which started fast opening, pit was built up with large rock chinked with smaller rocks then finally covered with dirt compacted through each course.

SECTIONS

HORI. SCALE: 1"=10'
VERT. SCALE: 1"=10'

LEGEND

EXISTING GRADE LINES ---
FINAL GRADE LINES ———

NO.	DATE	REVISION	APPR.
SUBMITTED			
APPROVED			
APPROVED			
COMMONWEALTH OF PENNSYLVANIA DEPARTMENT OF ENVIRONMENTAL RESOURCES OFFICE OF RESOURCES MANAGEMENT			
PROJECT NO. SL 126-1-5 MINE DRAINAGE POLLUTION ABATEMENT SWATARA CREEK WATERSHED UPPER SWATARA CREEK & POLLY'S RUN REILLY TWP. SCHUYLKILL CO., PA. NICHOLAS-COWLEY-BROSCH ASSOC., INC. 3300 NORTH THIRD STREET HARRISBURG, PENNSYLVANIA 17110			
UPPER SWATARA CREEK SECTIONS - PART II			
DRAWN BY	DATE	DRAWING NO.	
BEU	Jan. 11, 1974	9 of 9	
CHECKED BY	SCALE		
HFC	AS SHOWN		