

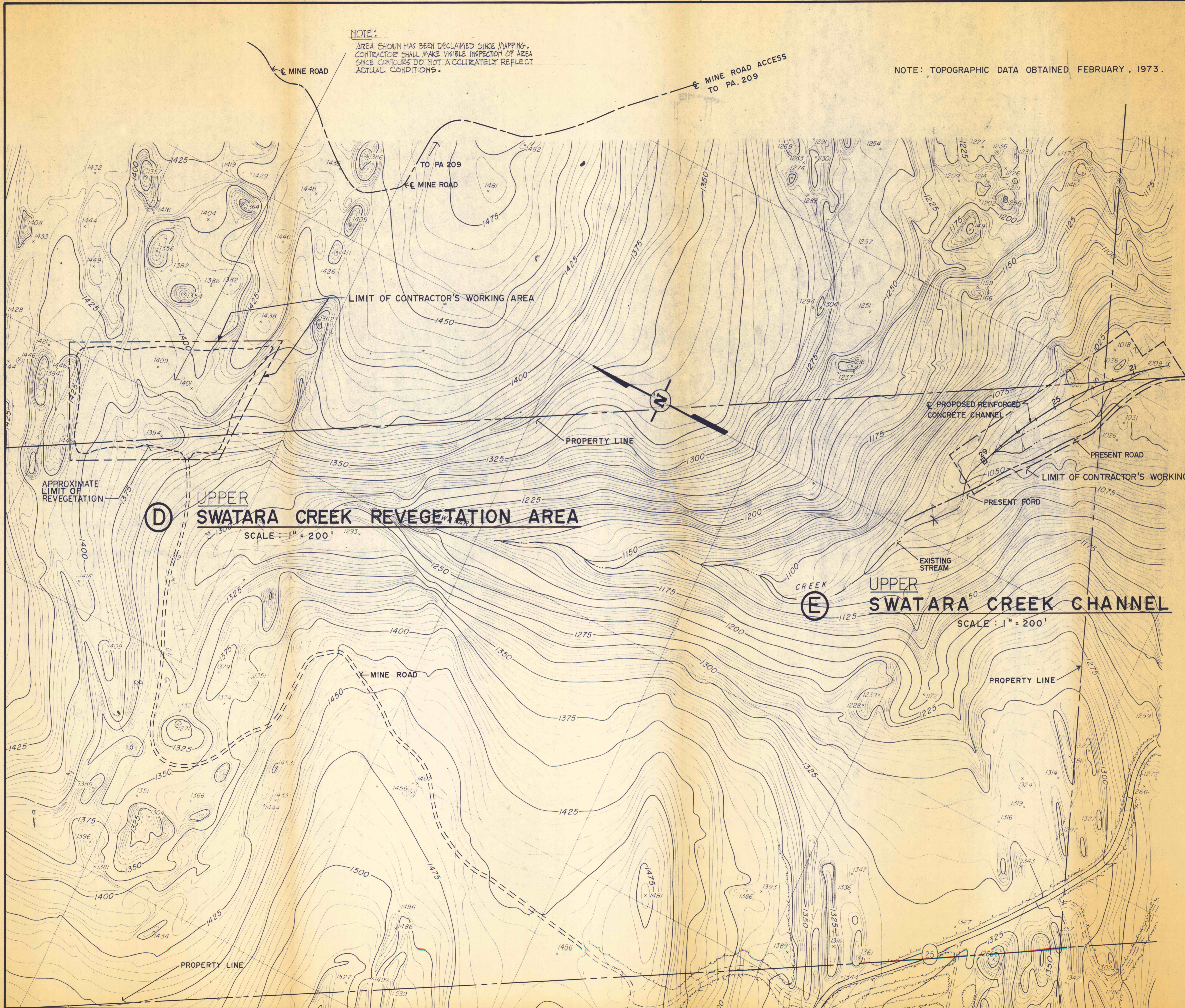
NOTE:
 AREA SHOWN HAS BEEN RECLAIMED SINCE MAPPING.
 CONTRACTOR SHALL MAKE VISUAL INSPECTION OF AREA
 SINCE CONTOURS DO NOT ACCURATELY REFLECT
 ACTUAL CONDITIONS.

NOTE: TOPOGRAPHIC DATA OBTAINED FEBRUARY, 1973.

LEGEND

- LIMIT OF GRADING _____
- LIMIT OF CONTRACTOR'S WORKING AREA - - - - -
- LIMIT OF REVEGETATION - - - - -

NOTE:
 FOR PLAN & DETAILS OF PROPOSED
 REINFORCED CONCRETE CHANNEL
 SEE SHEETS 5 OF 9 AND 6 OF 9.

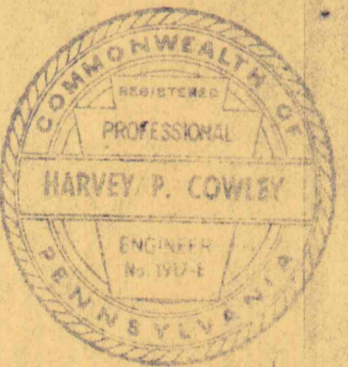


NO.	DATE	REVISION	APPR.

SUBMITTED
Harvey P. Cowley
 PROFESSIONAL

APPROVED
Albert A. Roman
 CHIEF - DIVISION OF MINE RECLAMATION

APPROVED
Harvey P. Cowley
 DIRECTOR - BUREAU OF DESIGN



COMMONWEALTH OF PENNSYLVANIA
 DEPARTMENT OF ENVIRONMENTAL RESOURCES
 OFFICE OF RESOURCES MANAGEMENT

PROJECT NO. SL 126-1-5
 MINE DRAINAGE POLLUTION ABATEMENT
 SWATARA CREEK WATERSHED
 UPPER SWATARA CREEK & POLLY'S RUN
 REILLY TWP. SCHUYLKILL CO., PA.

NICHOLAS-COWLEY-BROSCH ASSOC., INC.
 Consulting Engineers
 3300 North Third St. Harrisburg, Pa.

UPPER SWATARA CREEK PLAN

DRAWN BY BEN	DATE Jan. 11, 1974	DRAWING NO. 4 of 9
CHECKED BY HPC	SCALE 1" = 200'	