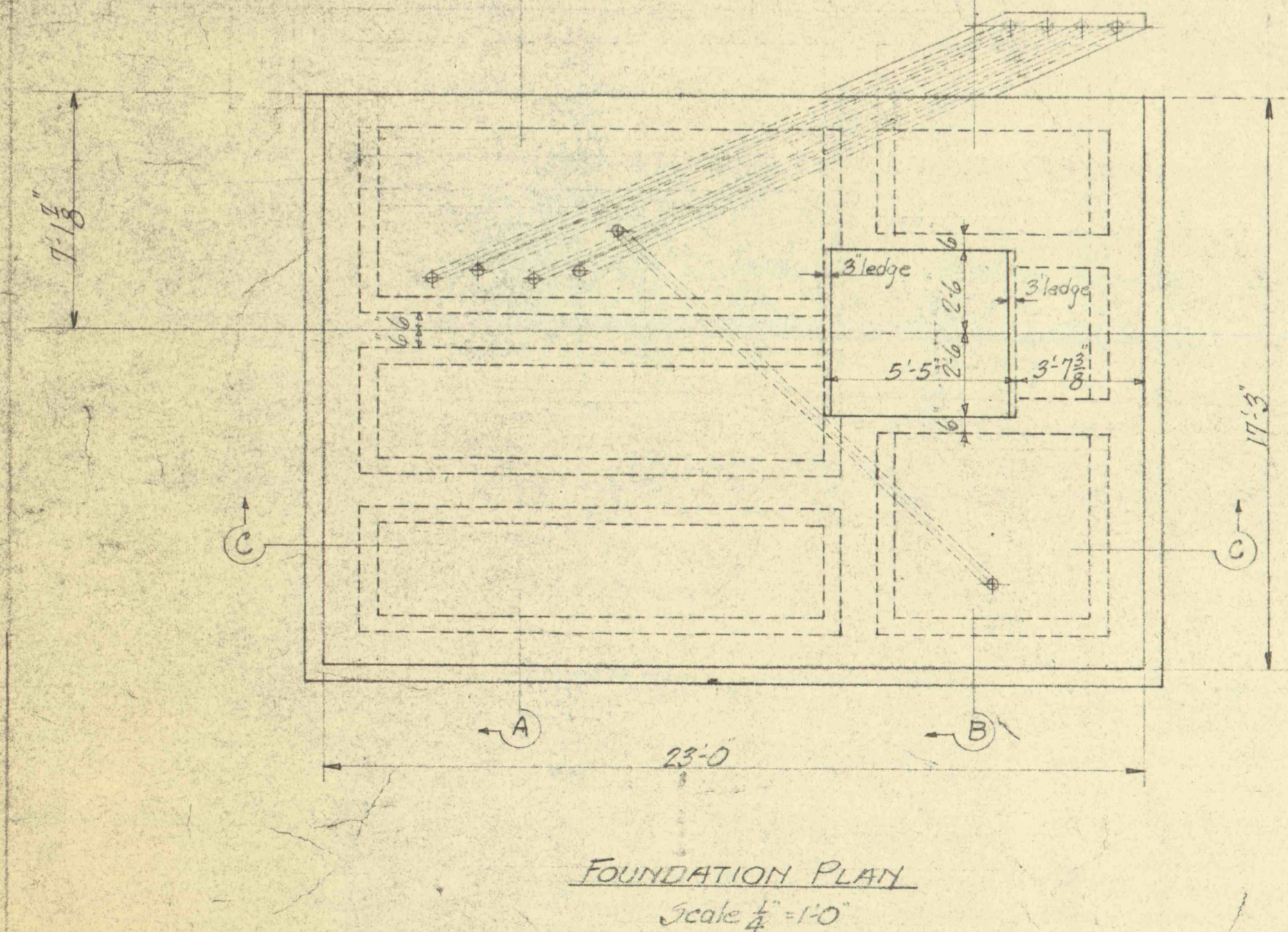
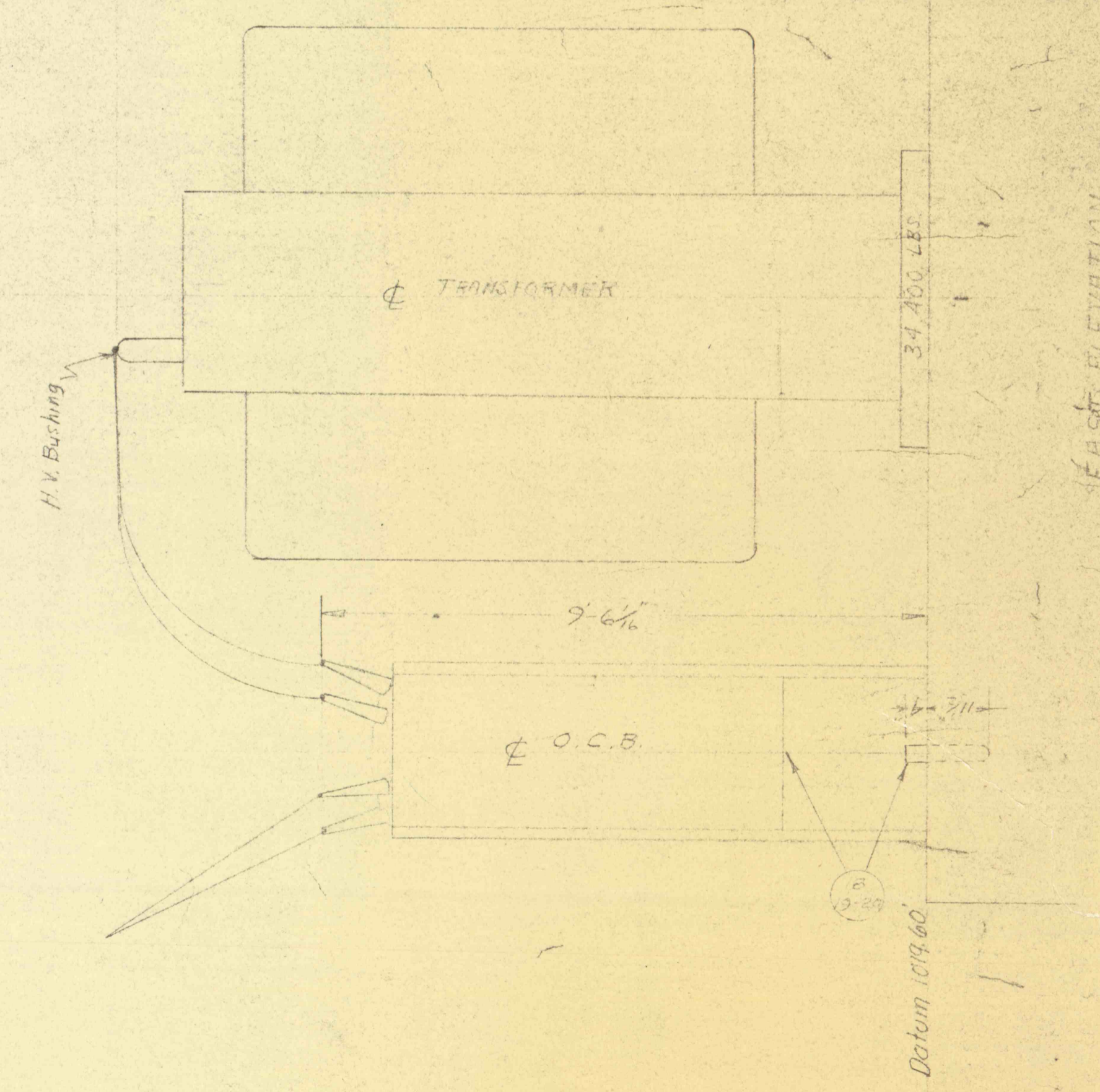
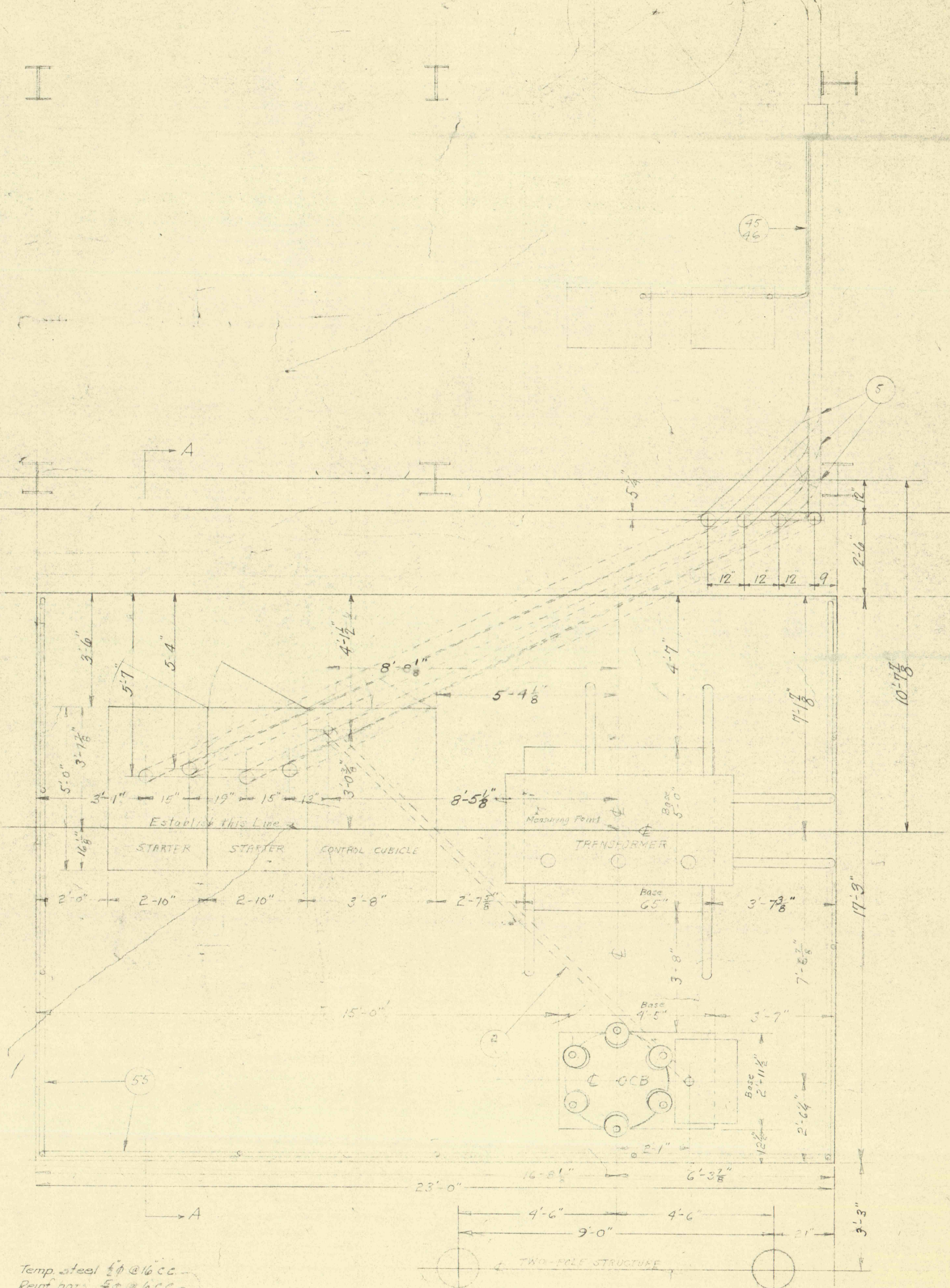
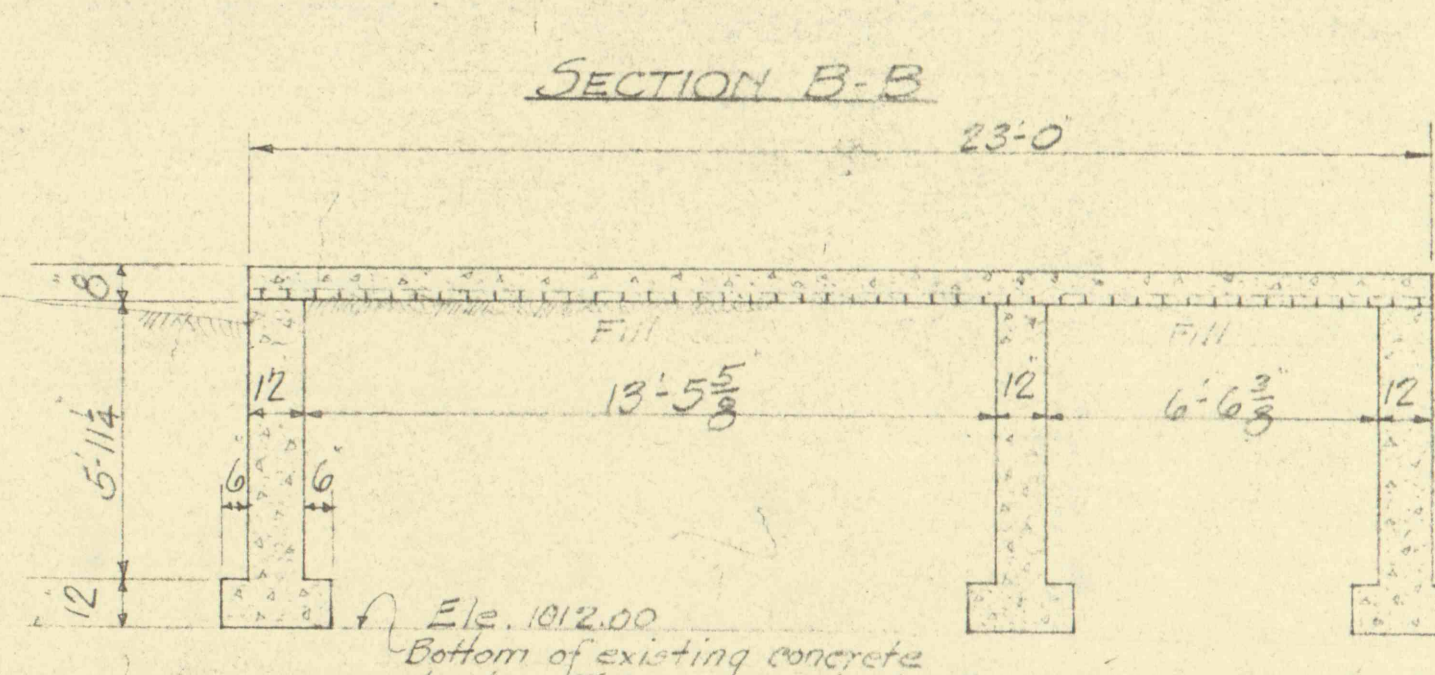
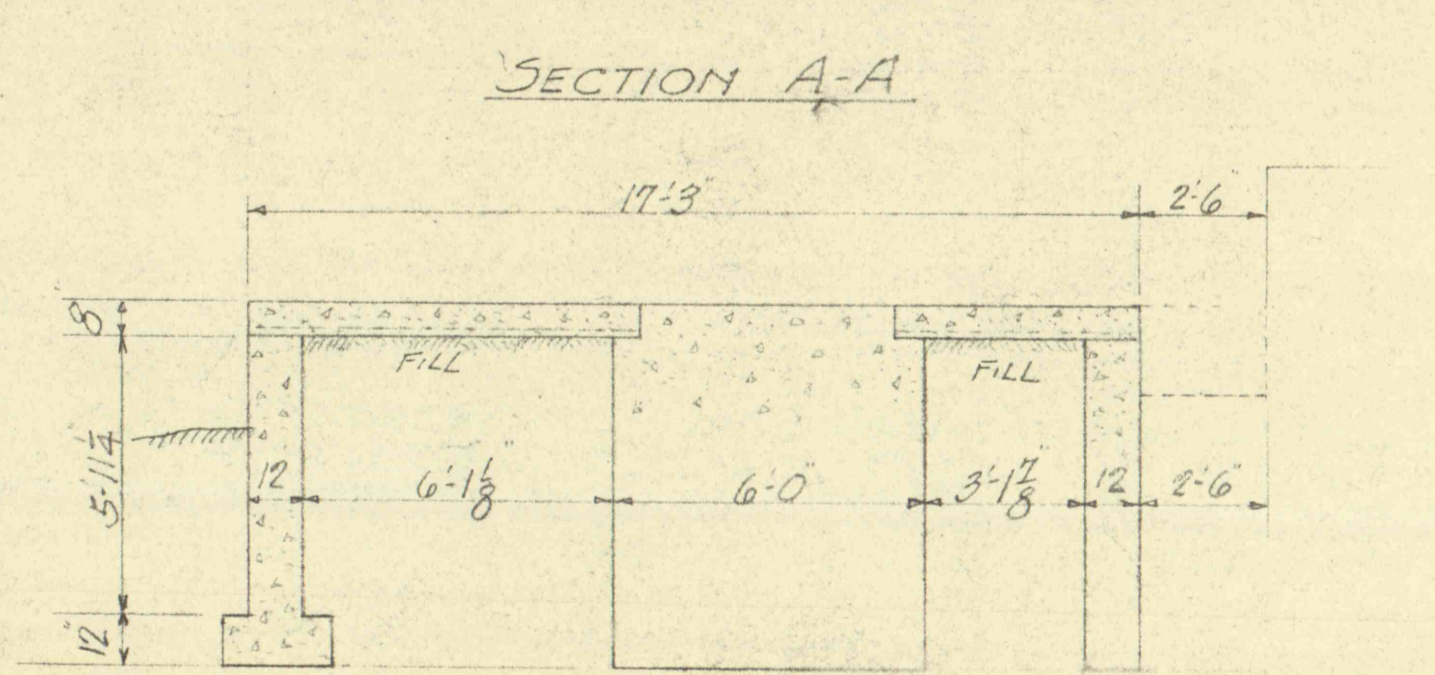
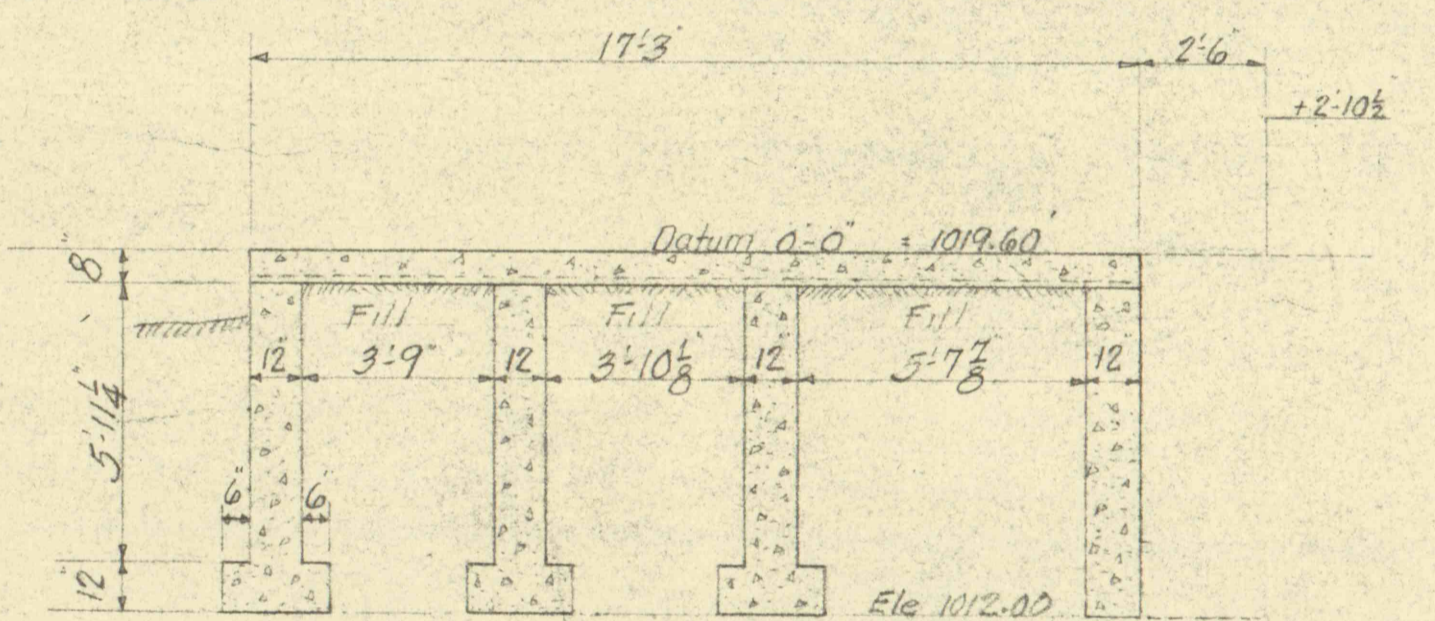
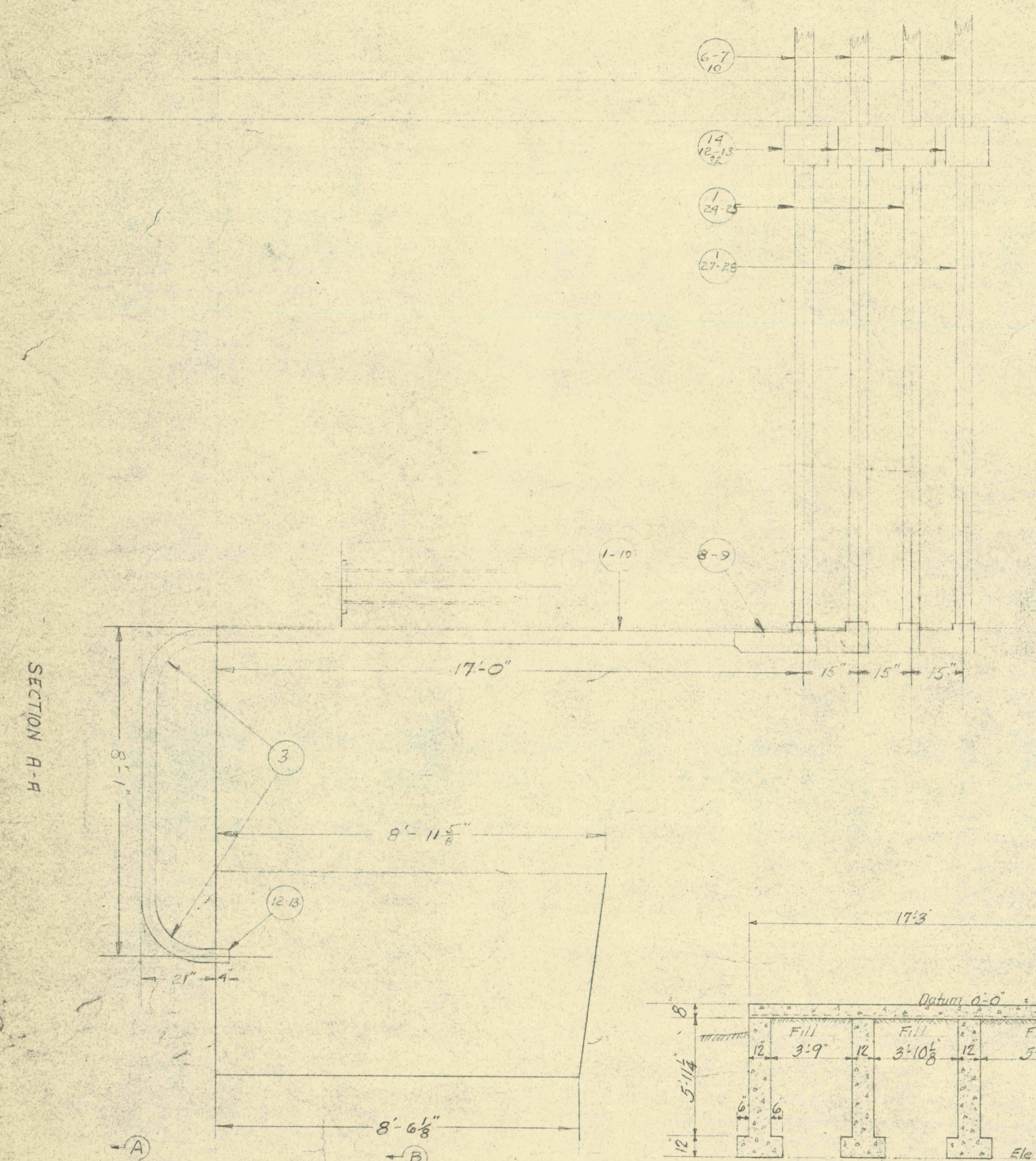


CONTINUE 4" FLEX CONDUIT & WIRES  
ALONG EAST & NORTH WALLS TO MOTOR  
JUNCTION BOXES.



Temp. steel #10 @ 16" C.C.  
Reinf. bars #4 @ 6" C.C.  
#18 Ga. Mahon Steel deck forms  
or equal.  
TYPICAL REINFORCING

THE LEHIGH VALLEY ENGINEERING CO.  
LANSDALE, PA.  
Description: TRANSFORMER, O.C.B.,  
WELL PUMPS, TRANSFORMER AND  
STARTERS  
Location: TAMBOVA, PA.  
Scale: 1/4" = 1'-0"  
Drawn by: [Signature]  
ED-358