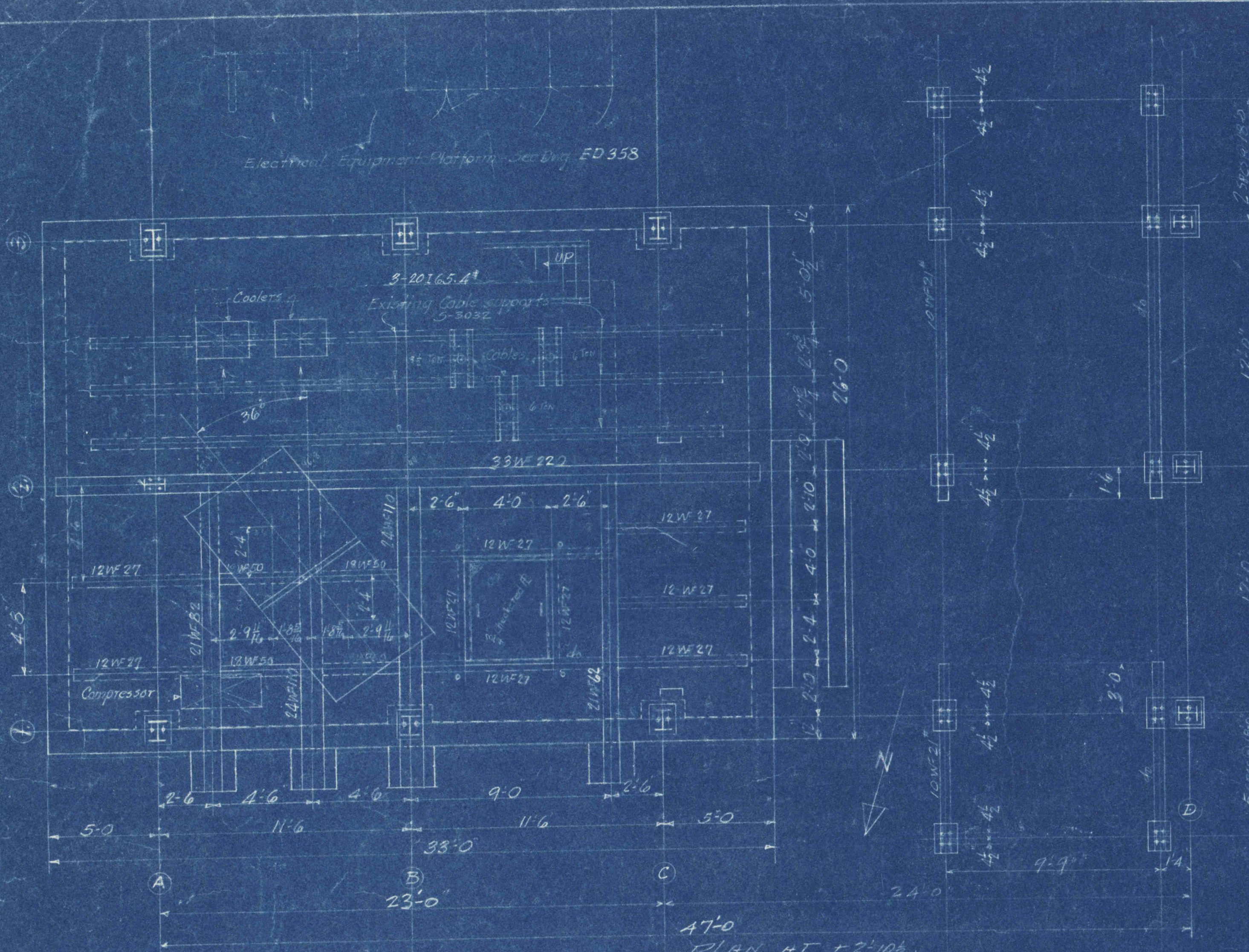


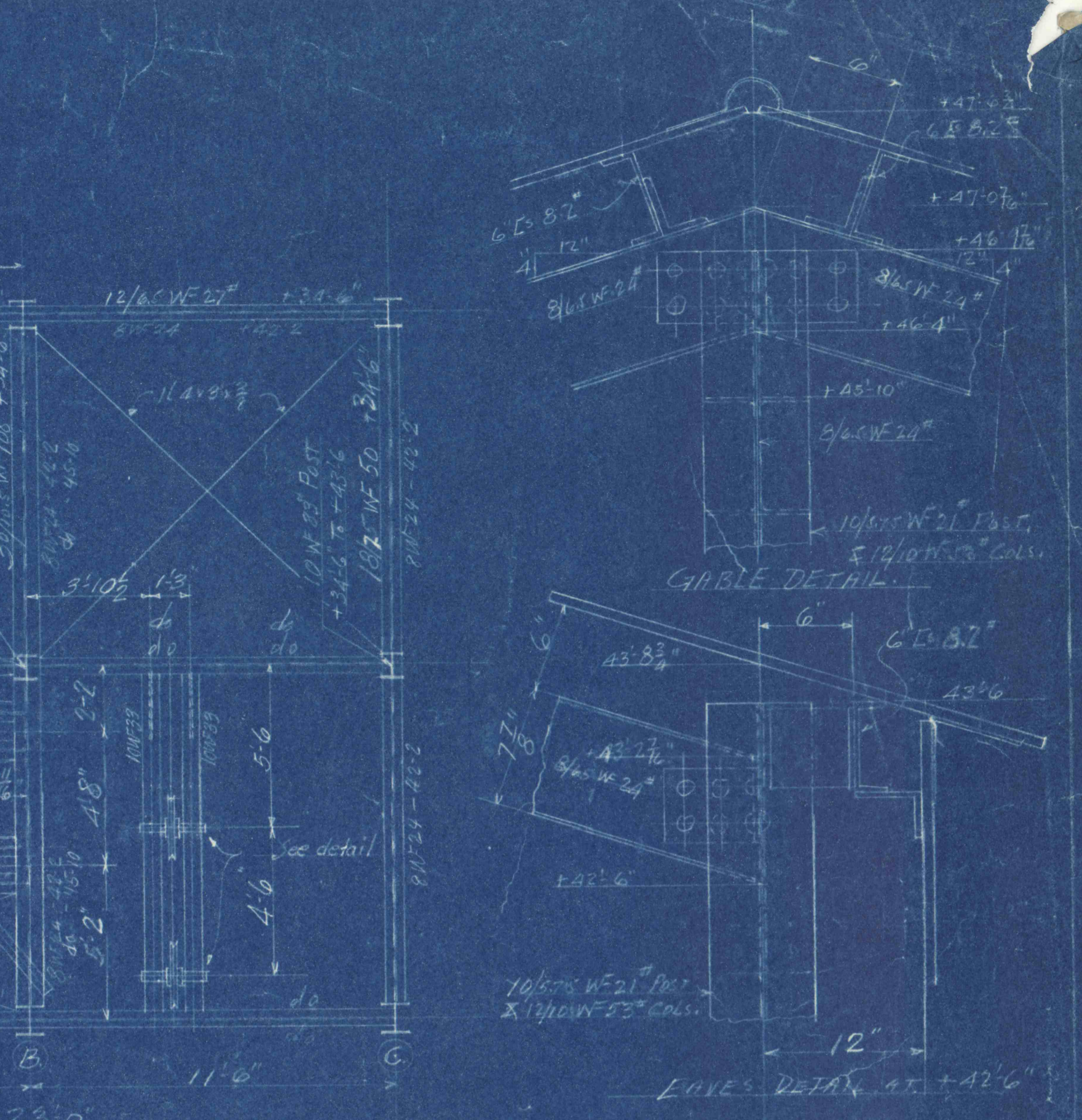
Electrical Equipment Platform Drawing ED 353



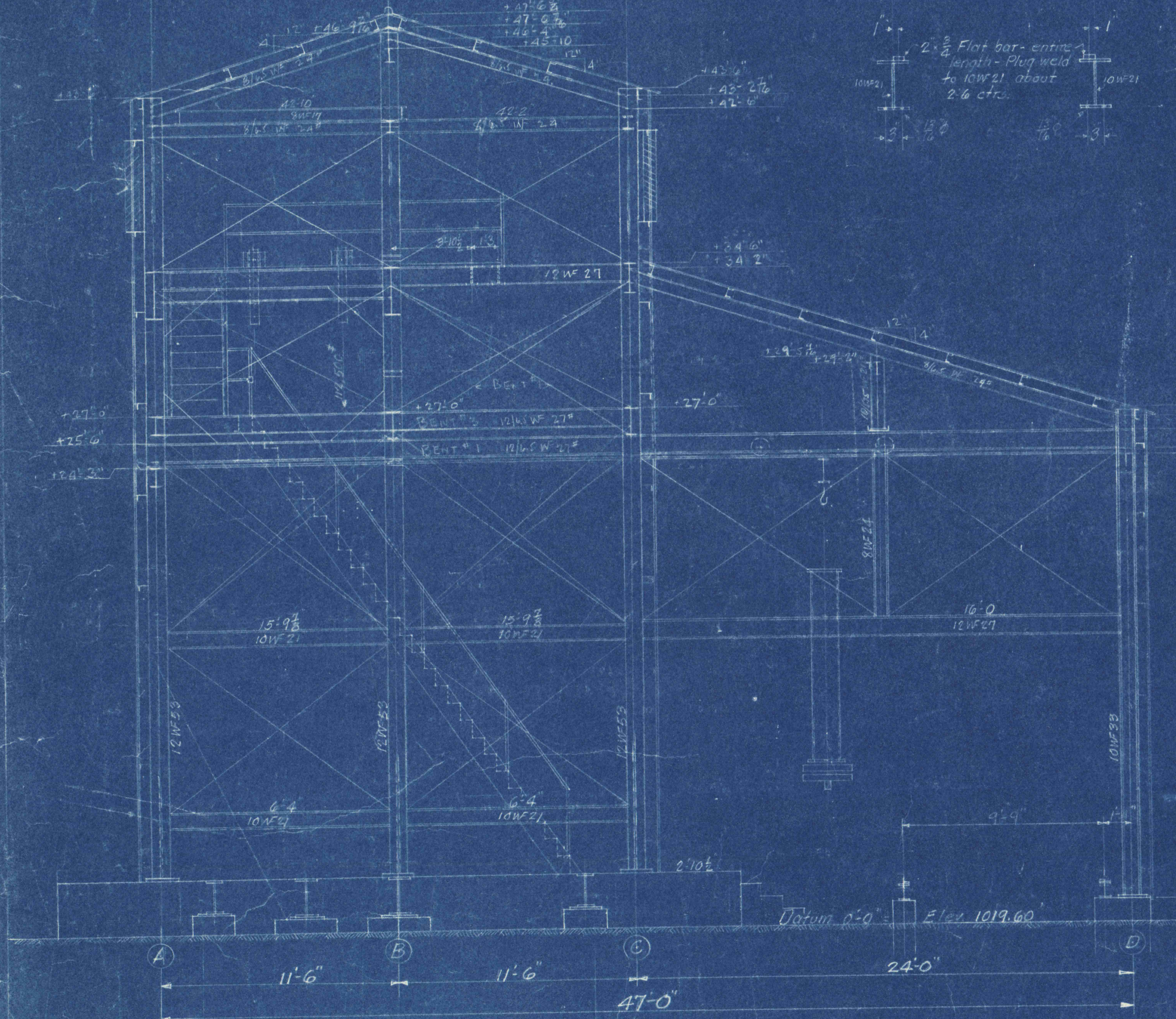
PLAN AT +21.0



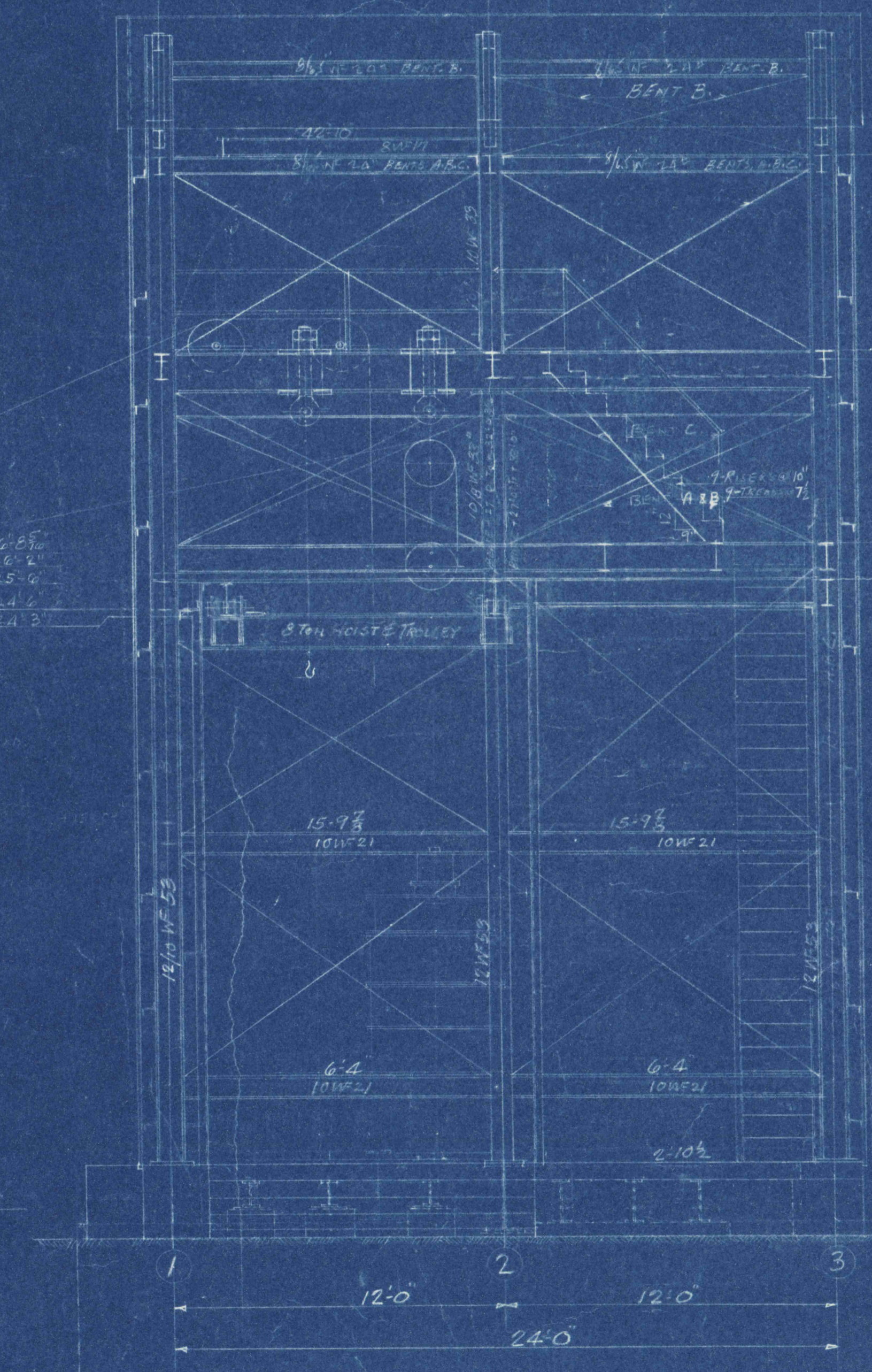
PLAN AT +27.0



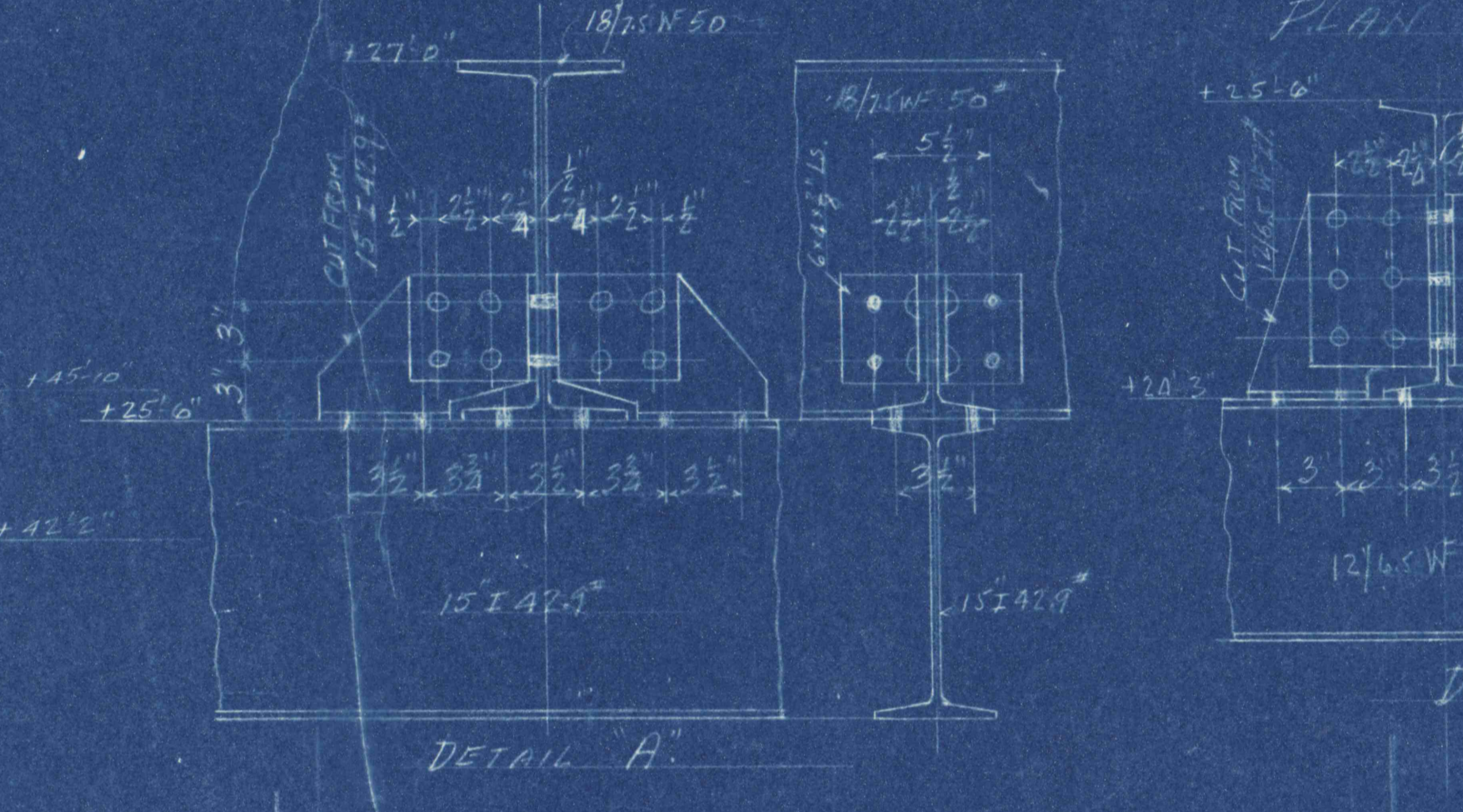
EAVES DETAIL AT +21.0



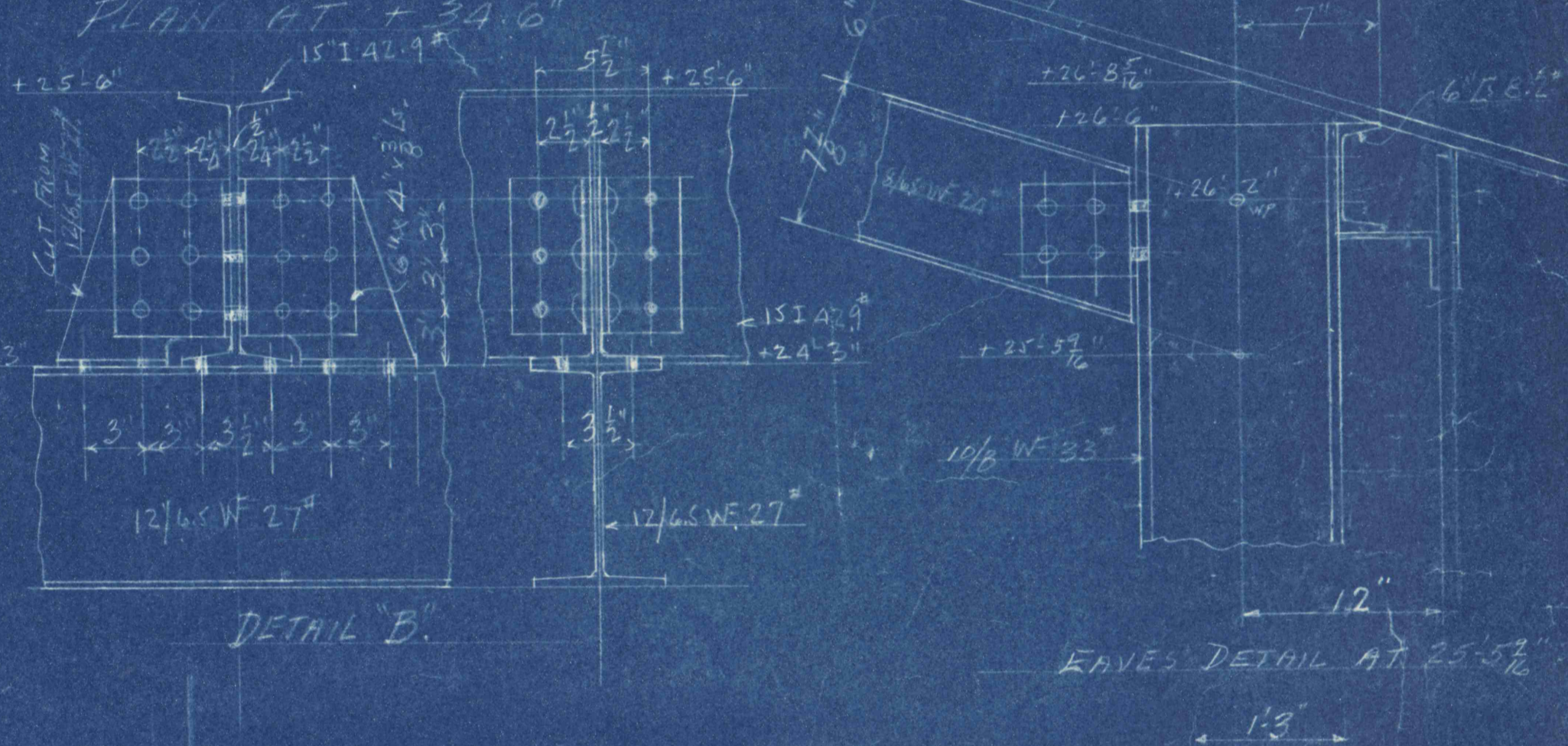
SIDE ELEVATION  
Scale 1/4" = 1'-0"



END ELEVATION  
Scale 1/4" = 1'-0"

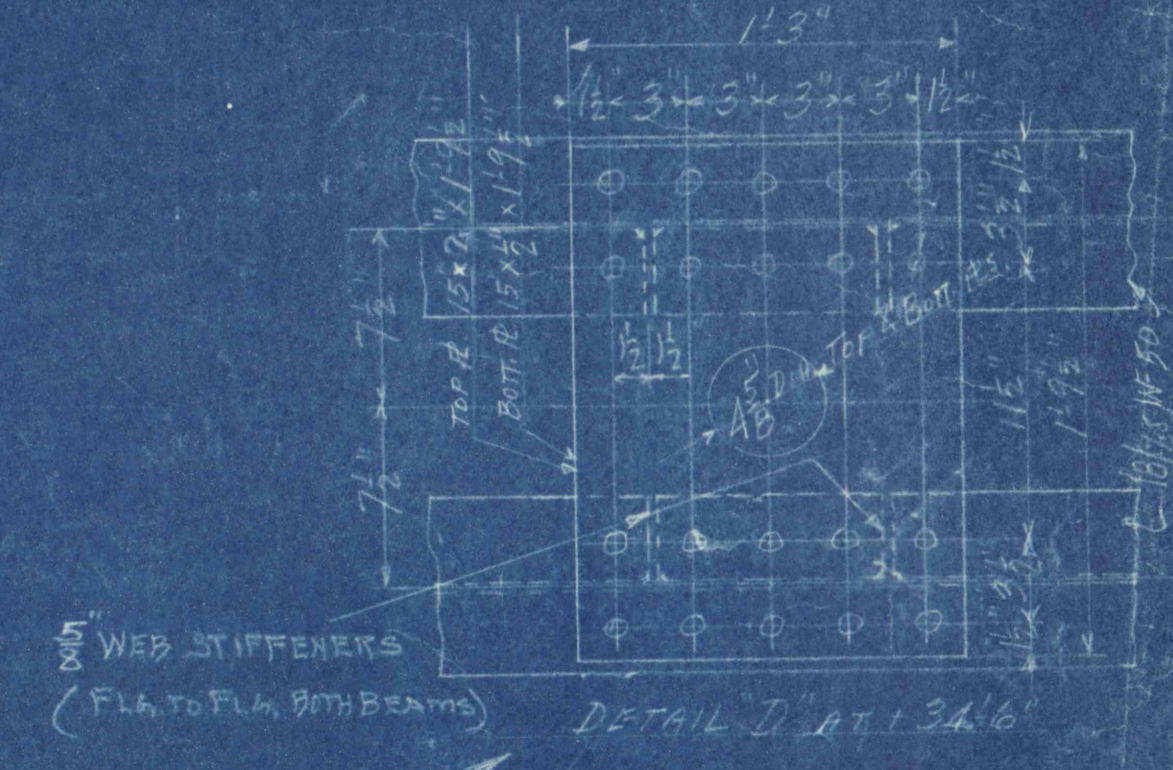


DETAIL A



DETAIL B

26 Dia Sheave for 1" rope  
3/4" Dia Shaft 2'-0" to 2'-6"  
5/8" Std pedestals  
Link Bolt sizes 2-1/2"



DETAIL D

REVISIONS  
(A) INCREASED TOP FLANGE THICKNESS  
(B) ADDED WEB STIFFENERS

LEHIGH COAL & NAVIGATION CO.  
TAMQUA MINE No. 14 SHAFT  
PROPOSED INSTALLATION OF DEEP WELL PUMP  
STEEL TOWER  
DATE: JULY 21, 1930. DRAWN BY: F.R. REED  
NEW DRAWING.  
52059  
4427