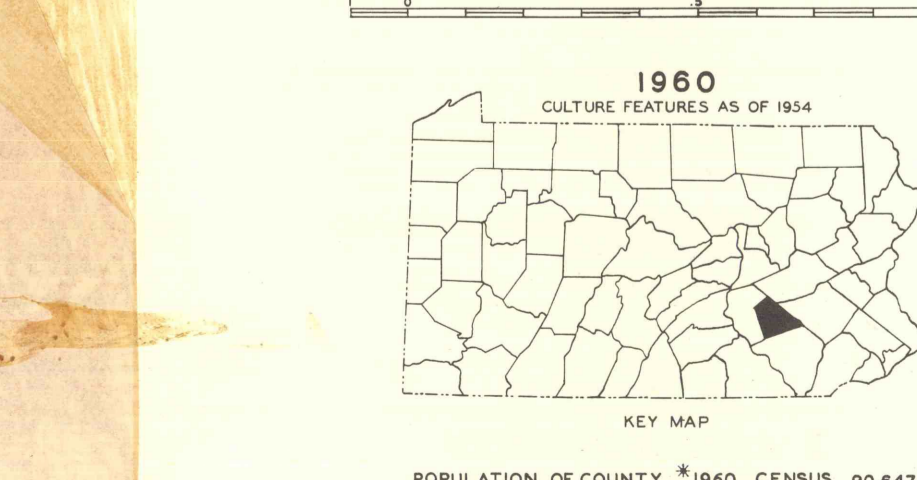
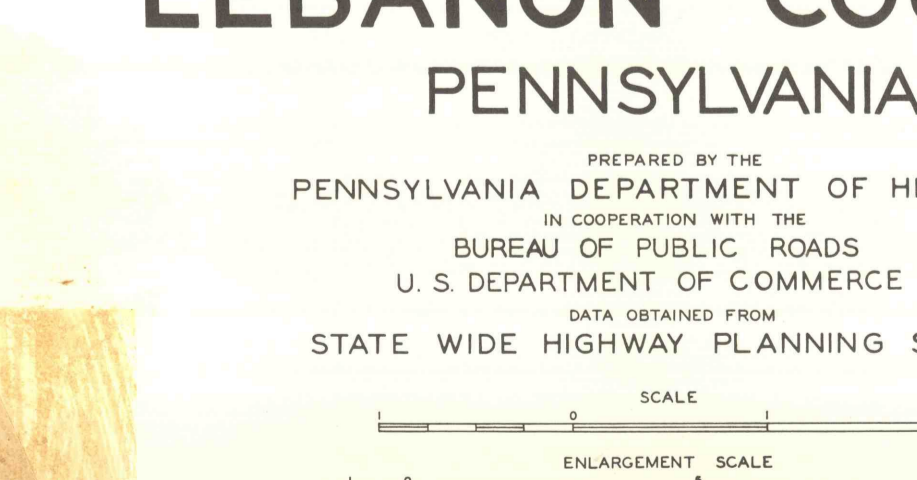
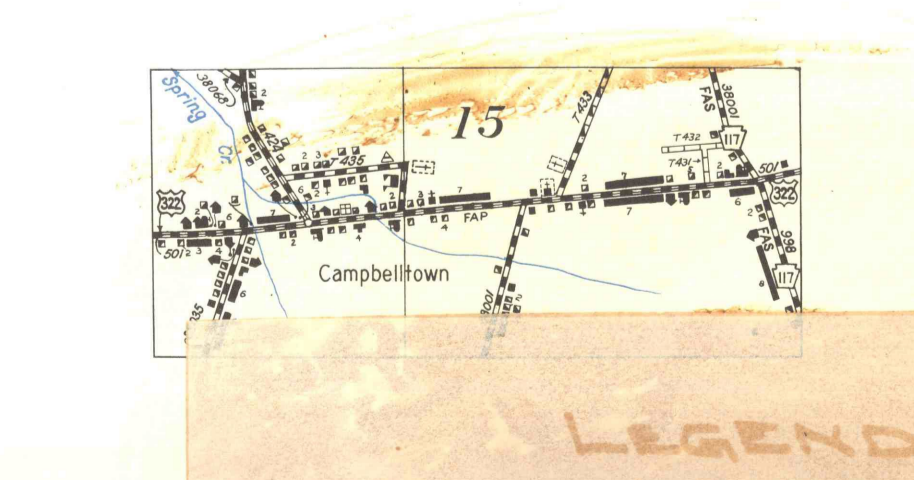
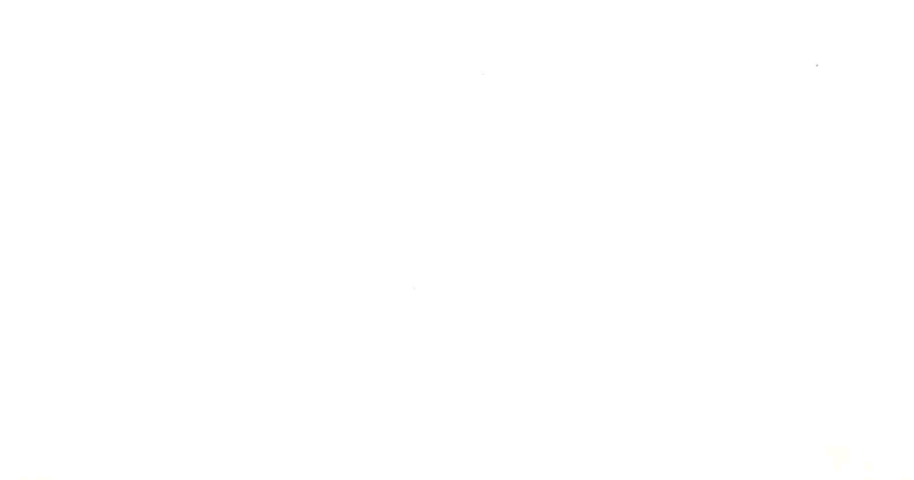
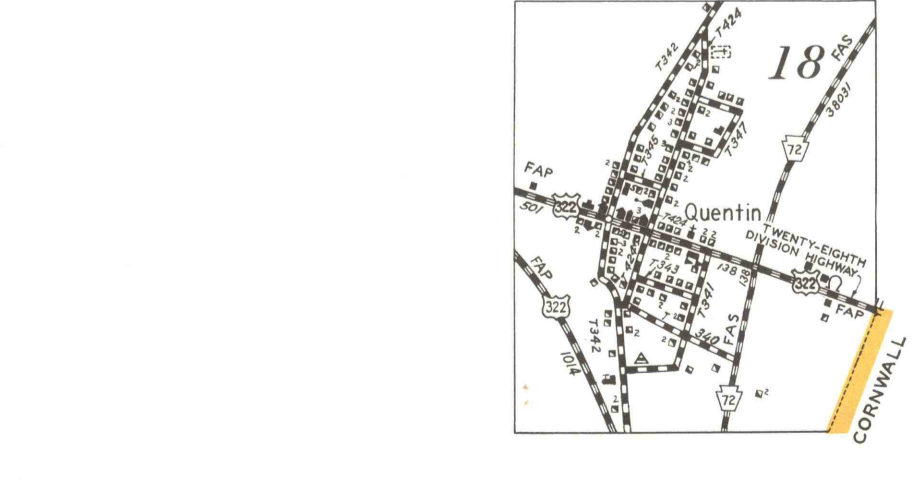
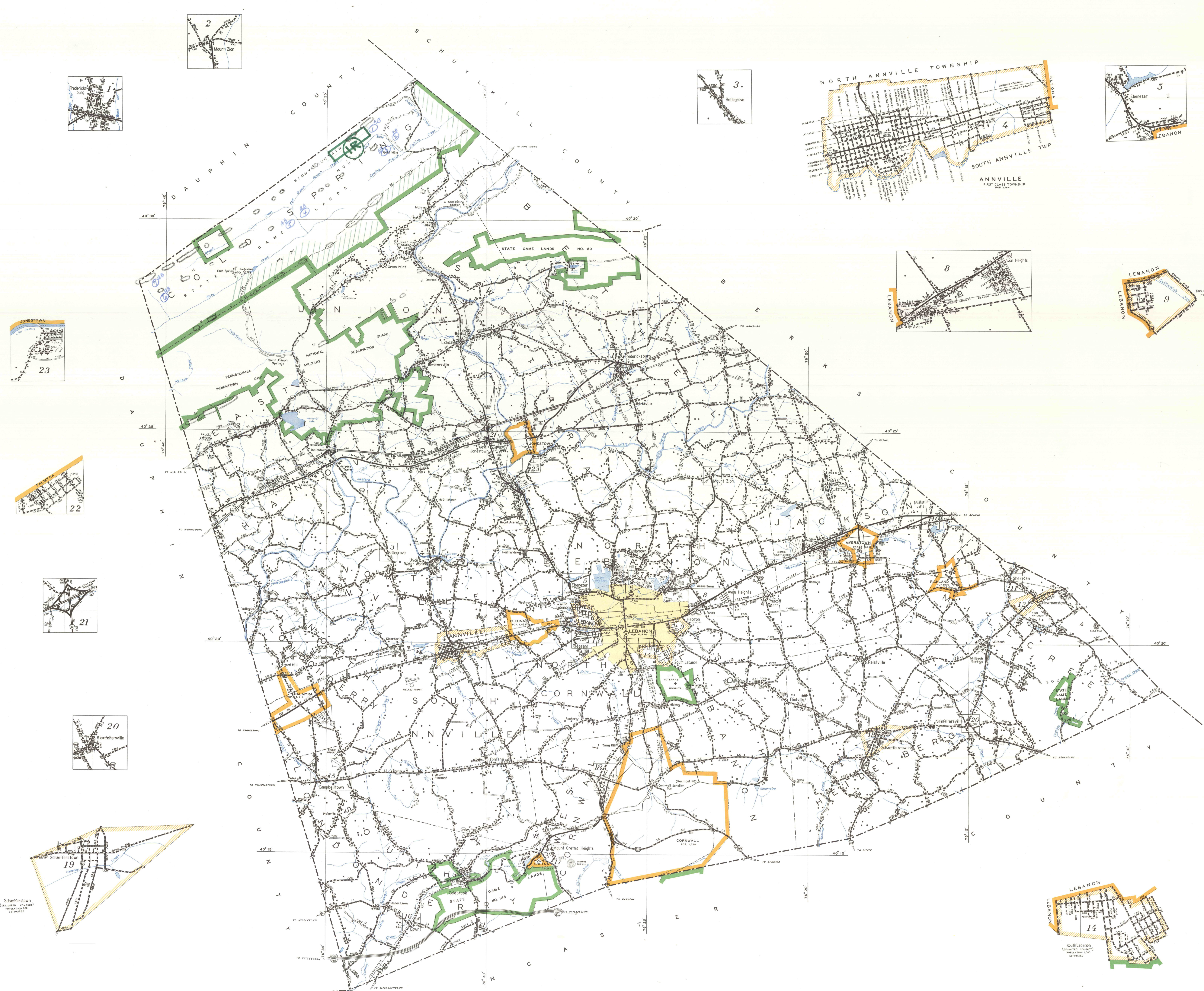


- LEGEND**
- FARM UNITS, DWELLINGS, ETC.**
- FARM UNIT (house, outbuildings, etc.)
 - DWELLING (small farm house)
 - ROOF OR GROUP OF DWELLINGS (small farm dwellings)
 - COMBINED DWELLING AND STORE
 - DWELLING AND POST OFFICE
 - DWELLING, BUSINESS AND POST OFFICE
 - DWELLING, BUSINESS AND FILING STATION
 - DWELLING, FILING STATION AND POST OFFICE
 - DWELLING, BUSINESS, FILING STATION AND POST OFFICE
 - TOURIST HOME
 - BARRACAS OR DOMESTICS
 - SEASONAL OR SUMMER COLONY DWELLING
 - SEASONAL DWELLINGS CLOSELY SPACED
 - HOTEL OR INN
 - CHURCH OR OTHER RELIGIOUS INSTITUTION
 - CHURCH AND SCHOOL (same site)
 - CEMETERY
 - CHURCH WITH CEMETERY ADJACENT
 - FRESH AIR FARM OR REST HOME
 - TOWNSHIP
 - TRAIL HOUSE
 - WATER STORAGE FOR FIRE PROTECTION
 - TRAIL HOUSE
 - GROUP OF MIXED CULTURAL FEATURES
- INDUSTRIAL**
- STORE OR SMALL BUSINESS ESTABLISHMENT
 - BUSINESS AND POST OFFICE
 - BUSINESS AND FILING STATION
 - BUSINESS, FILING STATION AND POST OFFICE
 - FACTORY OR INDUSTRIAL PLANT
 - SAMMILL
 - MINE, SHAFT OR DRIFT
 - OIL OR GAS WELL
 - OIL TANK
 - SALT TANK
 - FILLING STATION (not connected with other business)
 - PUMPING STATION (oil or gas)
 - GASOLINE OR PUMPING STATION (general)
 - SEASONAL INDUSTRY (cannery or small grain mill)
 - ROAD STATION FARM PRODUCE SALES
 - WAREHOUSE (general)
 - GREENHOUSE (general)
 - NURSERY
 - GRAVEL PIT
 - QUARRY
 - MILL OR OVEN
 - WATER POWERED MILL
 - STOCK YARD OR LOADING PEN
- EDUCATIONAL AND CORRECTIONAL INSTITUTIONS**
- SCHOOL HOUSE
 - CONSOLIDATED OR LARGE SCHOOL
 - OTHER EDUCATIONAL INSTITUTIONS
 - PUBLIC LIBRARY
 - MUSEUM
 - TOWN HALL, GRANGE OR COMMUNITY HALL
 - ZOOLOGICAL GARDEN
 - COUNTY PRISON FARM
 - COUNTY FARM
 - CORRECTIONAL INSTITUTION
- PUBLIC SERVICE FACILITIES**
- POST OFFICE
 - STREET HIGHWAY GARAGE
 - POLICE STATION
 - FIRE ENGINE HOUSE
 - GARAGE OR RUBBER DUMP
 - FRIDGE DISPOSAL PLANT
 - INCINERATOR
 - WATER SUPPLY STATION
 - POWER PLANT
 - POWER SUBSTATION
 - FILTER PLANT
 - RADIO STATION (with call letters)
 - RADIO RANGE STATION
- CONSERVATION OR RECREATION**
- PICNIC GROUNDS
 - PLAYGROUND, ATHLETIC FIELD, ETC.
 - BATHING BEACH OR SWIMMING POOL
 - BOATING SITE
 - CAMP SITE
 - COURT HOUSE OR MOTEL
 - CAMP OR LODGE
 - SMALL PARK (smaller than county or township)
 - ROADSIDE SPRING
 - GUIDE HOUSE OR GATE HOUSE
 - FOREST RANGER STATION
 - GUARD OR RANGER STATION
 - OBSERVATION OR LOOKOUT TOWER
 - PROMONTARY PEAK AND LOOKOUT TOWER
 - FISH HATCHERY
 - PILE CULVERT
 - POLO GROUNDS
 - TRIMMING GROUNDS
 - AMUSEMENT PARK OR HALL
 - FARGOYARD, RACE COURSE, FREEMAN
 - DRIVE IN THEATRE
 - STATE PARK, RECREATION AREA, HISTORIC SITE
- MISCELLANEOUS MAP FEATURES - NATURAL FEATURES**
- ARMORY
 - ARENAL
 - TRIANGULATION STATION
 - FOOT, ARMY CAMP OR BARRACAS
 - BENCH MARK
 - WATER AND LONGITUDE LINE
 - PROMONTARY ELEVATION WITH NAME
 - SHOULDER OR DEPRESSION
- AIRWAYS AND AIRPORTS**
- MILITARY FIELD
 - AIRPORT, COMPLETE FACILITIES (commercial or military)
 - AIRFIELD, LIMITED FACILITIES
 - LANDING AREA OR STRIP (includes private airfield)
 - LANDING LIGHT BEACON (general)
 - SEAPLANE BASE, MILITARY
 - SEAPLANE BASE, CIVIL
 - AIRPORT (general)
- RAILROADS**
- RAILROAD
 - RAILROAD, NARROW GAUGE
 - ELECTRIC INTERURBAN OR SUBURBAN RAILROAD
 - RAILROAD, ABANDONED TRACK RETAINED
 - RAILROAD STATION
 - RAILROAD CROSSING
 - RAILROAD GATE
 - RAILROAD ABOVE
 - RAILROAD BELOW
 - RAILROAD BRIDGE AND TUNNEL
 - STANDARD GAUGE RAILROAD (low streets or road)
 - NARROW GAUGE RAILROAD (low streets or road)
 - ELECTRIC RAILROAD
- NAVIGATION AND DRAINAGE**
- SHIP AND BARGE LINES ON NATURAL STREAMS
 - DOCK, PIER OR LANDING
 - FREE FERM AND TRILL FERM
 - NAVIGABLE STREAM (intermittent)
 - NAVIGABLE STREAM (intermittent)
 - HEAD OF NAVIGATION (intermittent)
 - HEAD OF NAVIGATION (general)
 - CANAL
 - ABANDONED CANAL
 - DAM WITH LOCK
 - INTERMITTENT STREAM
 - WIDE STREAM
 - WIDE STREAM WITH DAM
 - LAKE, RESERVOIR OR POND
 - LAKE, RESERVOIR OR POND WITH DAM
 - MARSH OR SWAMP LAND
- BOUNDARIES**
- STATE LINE
 - COUNTY LINE
 - TOWNSHIP LINE
 - CORPORATE LINE
 - UNINCORPORATED CONTRACT LINE
 - ENLARGEMENT INSET LINE
 - STATE GAME RESERVE LINE
 - STATE GAME LAND LINE
 - STATE FOREST LAND LINE
 - OTHER STATE OR FEDERAL PUBLIC LAND LINE
- CITY, BOROUGH OR VILLAGE CENTERS**
- STATE CAPITAL
 - COUNTY SEAT
 - INCORPORATED CITIES OR BOROUGHS
 - UNINCORPORATED URBAN CONTRACT
- STRUCTURES**
- HIGHWAY BRIDGE (over free road)
 - SMALL BRIDGES CLOSELY SPACED
 - COVERED BRIDGE
 - DISMANTLED BRIDGE (low water openings)
 - SUSPENSION
 - TRUSS OR GIRDER
 - CANTILEVER BRIDGE
 - HIGHWAY GRADE SEPARATION
 - DAM WITH ROAD
 - HIGHWAY TUNNEL
 - LEVEL OR DIRT WITH ROAD
 - CORROSION ESTABLISHED
 - OVERHEAD INDUSTRIAL STRUCTURE
- ROADS AND ROADWAY FEATURES**
- FEDERAL AND PRIMARY HIGHWAY SYSTEM
 - FEDERAL AND SECONDARY HIGHWAY SYSTEM
 - INTERSTATE HIGHWAY SYSTEM
 - TRAFFIC CIRCLE
 - U.S. TRAFFIC ROUTE NUMBER
 - PENNSYLVANIA TRAFFIC ROUTE NUMBER
 - PENNSYLVANIA LEGISLATIVE ROUTE NO.
 - PENNSYLVANIA TOWNSHIP ROUTE NUMBER
 - POINTS BETWEEN WHICH DISTANCES ARE MEASURED (DISTANCES ARE MEASURED BETWEEN THESE POINTS)
 - SIDE ROADS AND STREETS IN UNINCORPORATED URBAN CONTRACTS AND EXTENSIONS OF LOCAL ROADS WITHIN MUNICIPALITIES
 - UNPAVABLE ROAD
 - UNIMPROVED ROAD
 - GRADED AND DRAINAGE ROAD
 - GRAVEL OR STONE ROAD
 - BITUMINOUS ROAD (low type)
 - BITUMINOUS ROAD (high type)
 - CONCRETE OR BRICK ROAD
 - DIVIDED HIGHWAY
 - HIGHWAY WITH FULL CONTROL OF ACCESS
 - HIGHWAY WITH PARTIAL CONTROL OF ACCESS



GENERAL HIGHWAY MAP
LEBANON COUNTY
 PENNSYLVANIA

PREPARED BY THE
 PENNSYLVANIA DEPARTMENT OF HIGHWAYS
 IN COOPERATION WITH THE
 BUREAU OF PUBLIC ROADS
 U. S. DEPARTMENT OF COMMERCE

DATA OBTAINED FROM
 STATE WIDE HIGHWAY PLANNING SURVEY

SCALE
 ENLARGEMENT SCALE

1980
 DATE FIGURES AS OF 1984

POPULATION OF COUNTY, 1980 CENSUS 80,847
 AREA OF COUNTY, 363 SQUARE MILES *APPROXIMATE ESTIMATE

POLYCONIC PROJECTION

LEGEND

STRIPPING BACKFILL R GREEN
 SUBSIDENCE S RED
 ACTIVE DRAINAGE AC BLACK
 ABANDONED DRAINAGE AB BLUE
 MINE FIRES MF PURPLE
 BANK FIRES BF ORANGE

AUG 10, 1965