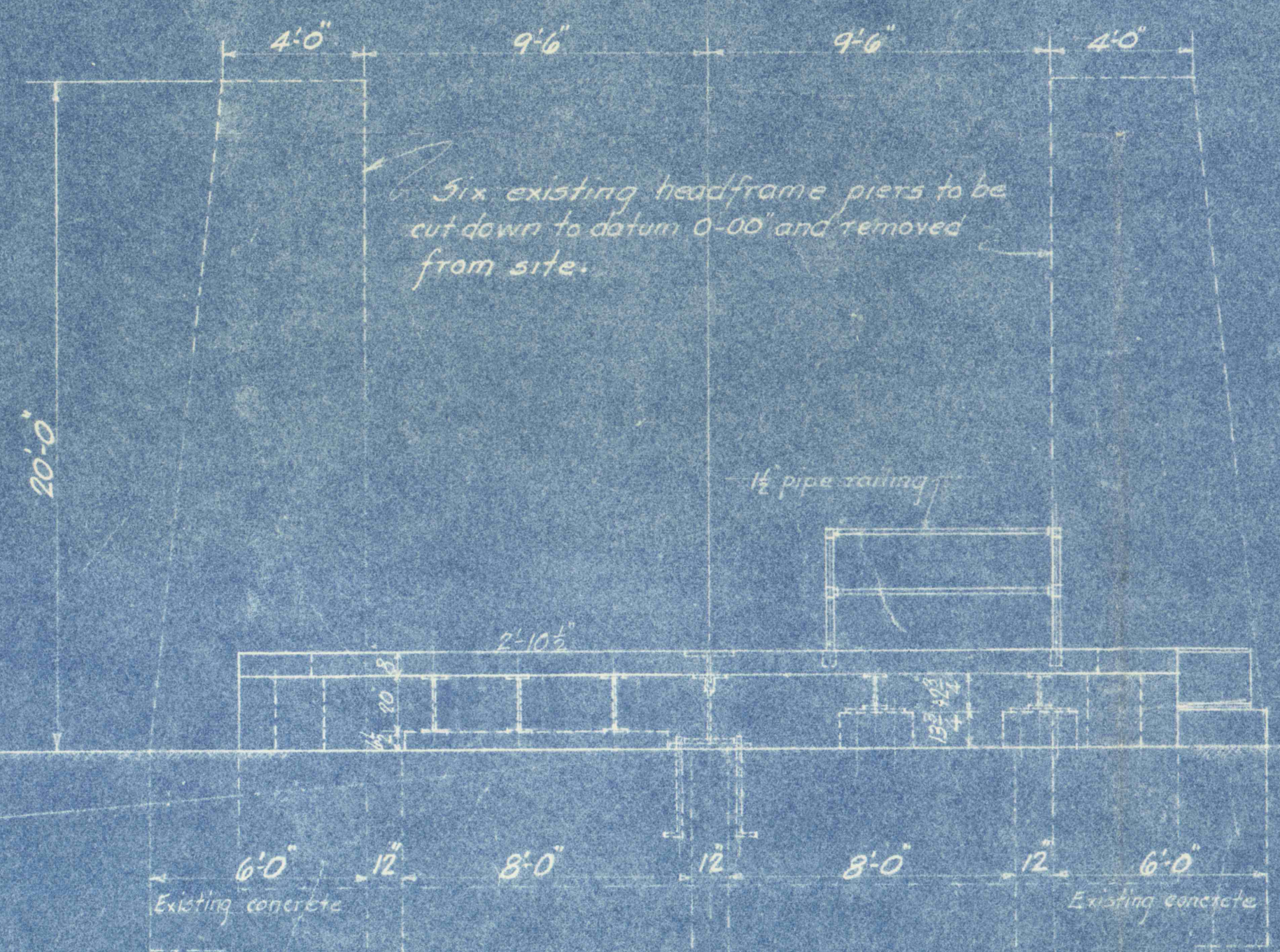


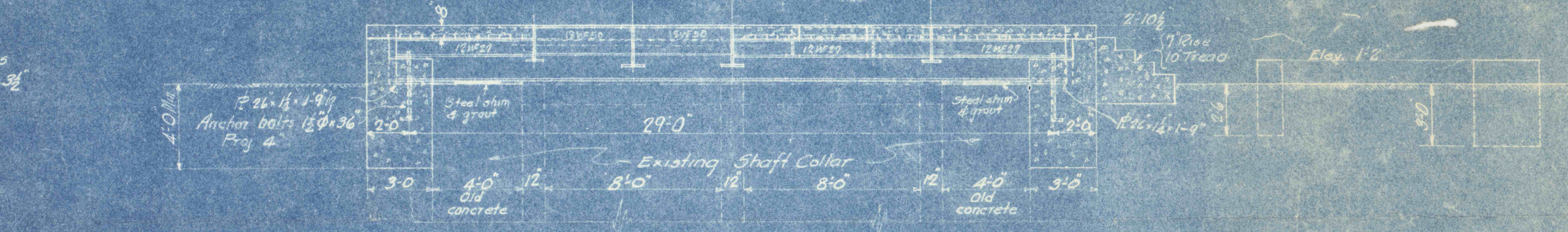
PLAN FOR MOTOR BASE PLATES
Scale 1/2" = 1'-0"

FOUNDATION PLAN
Scale 1/4" = 1'-0"

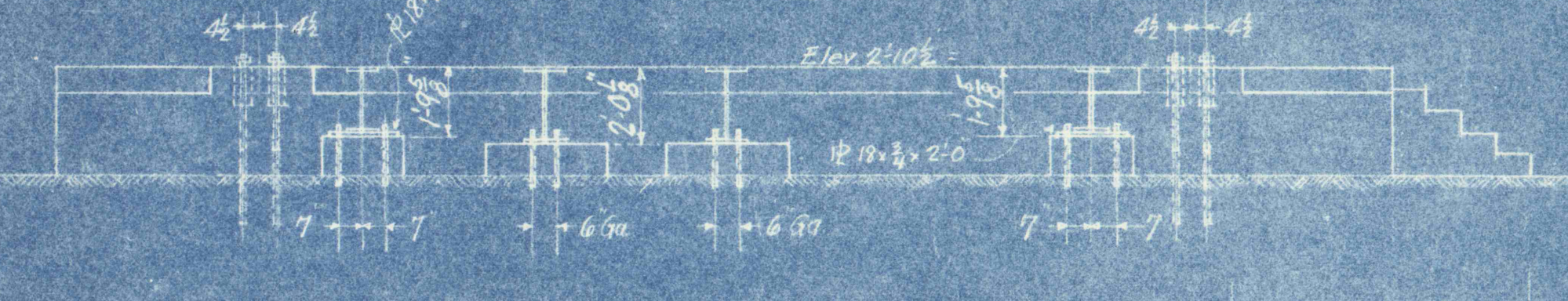
NOTE: Elev. 1019.60 - 05.00



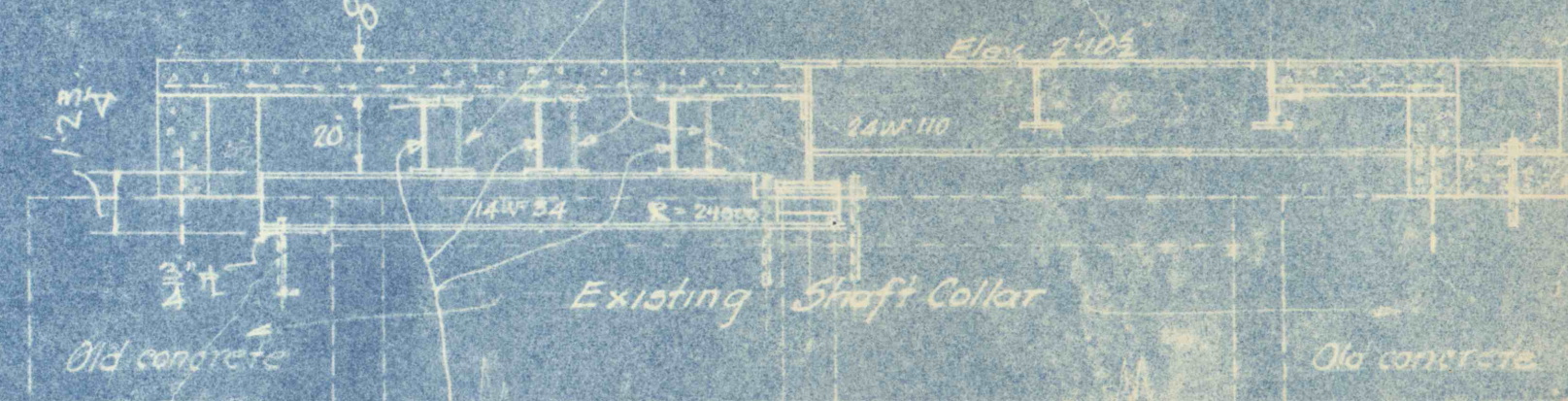
EAST ELEVATION



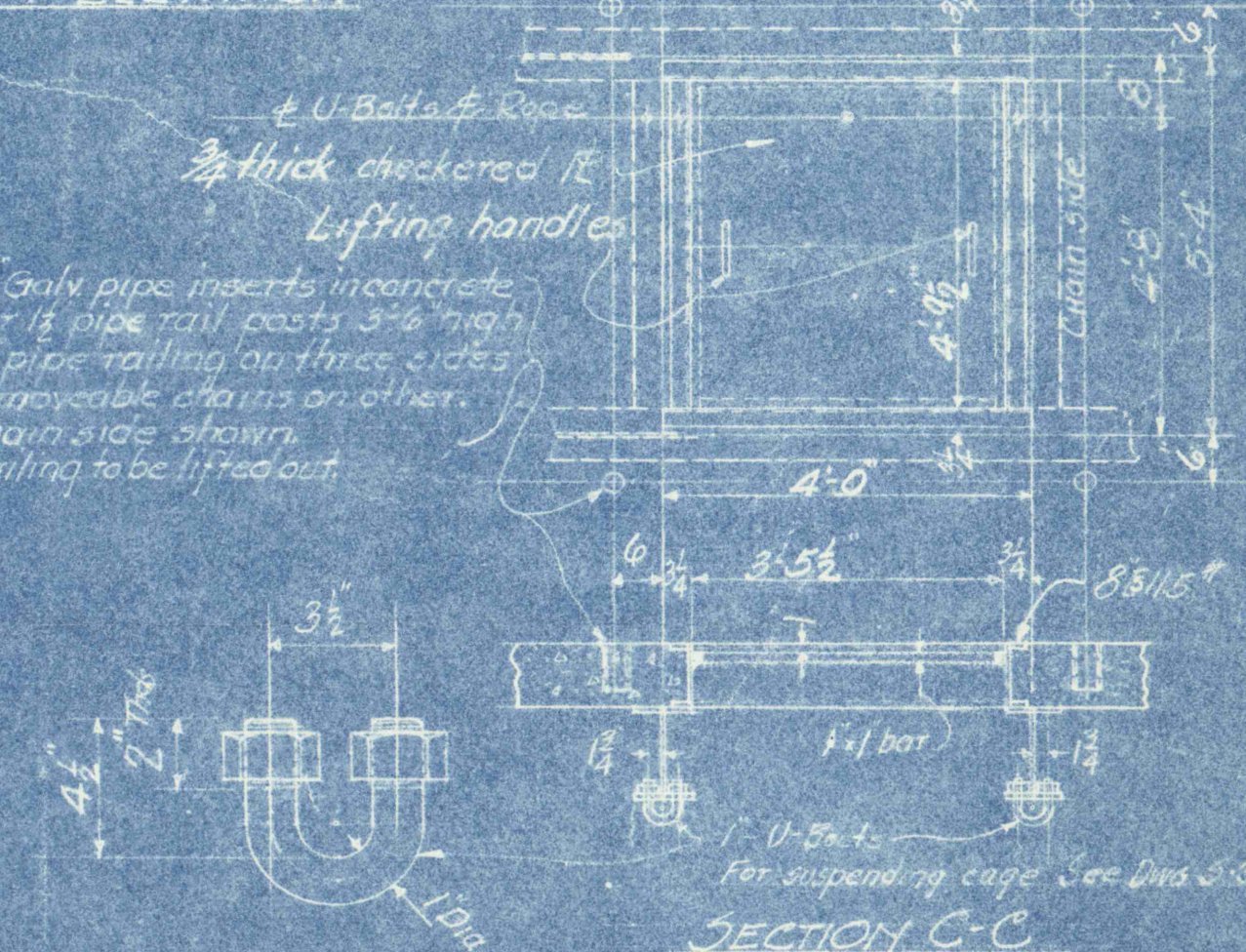
SECTION A-A
Scale 3/4" = 1'-0"



NORTH ELEVATION



SECTION B-B
Scale 3/4" = 1'-0"



SECTION C-C

DETAIL WHERE COL'S SET ON BEAMS

TYPICAL REINFORCING

LEWIS, CHASE AND WASHINGTON CO.
ENGINEERS AND ARCHITECTS
WASHINGTON, D.C.
4429 A