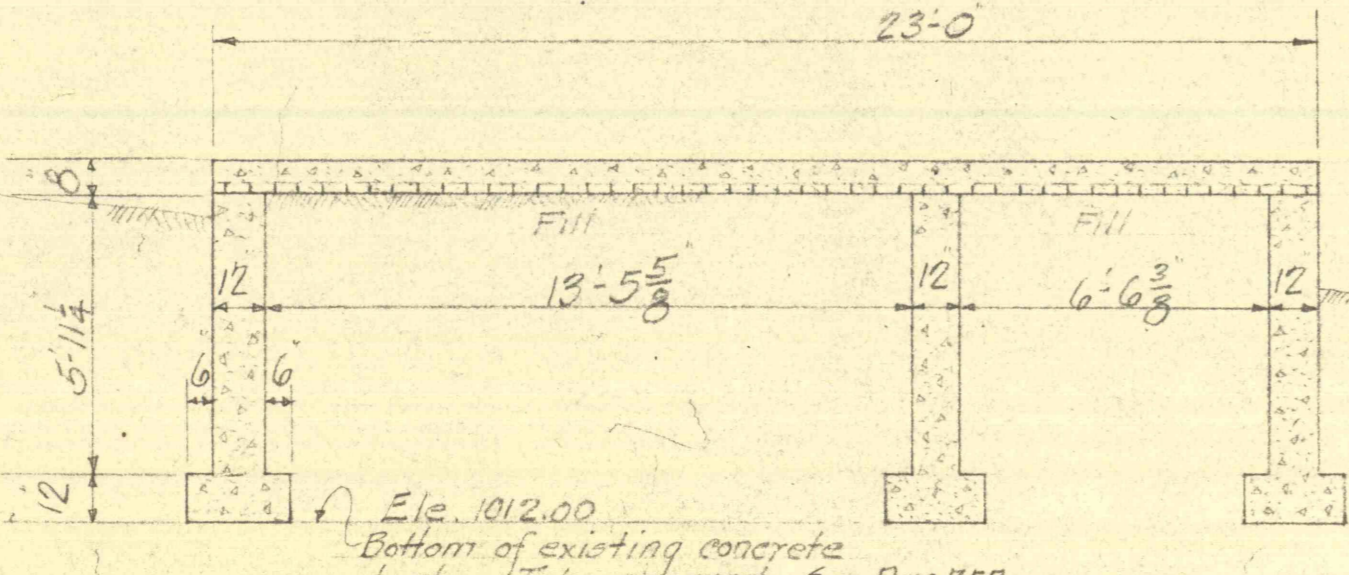
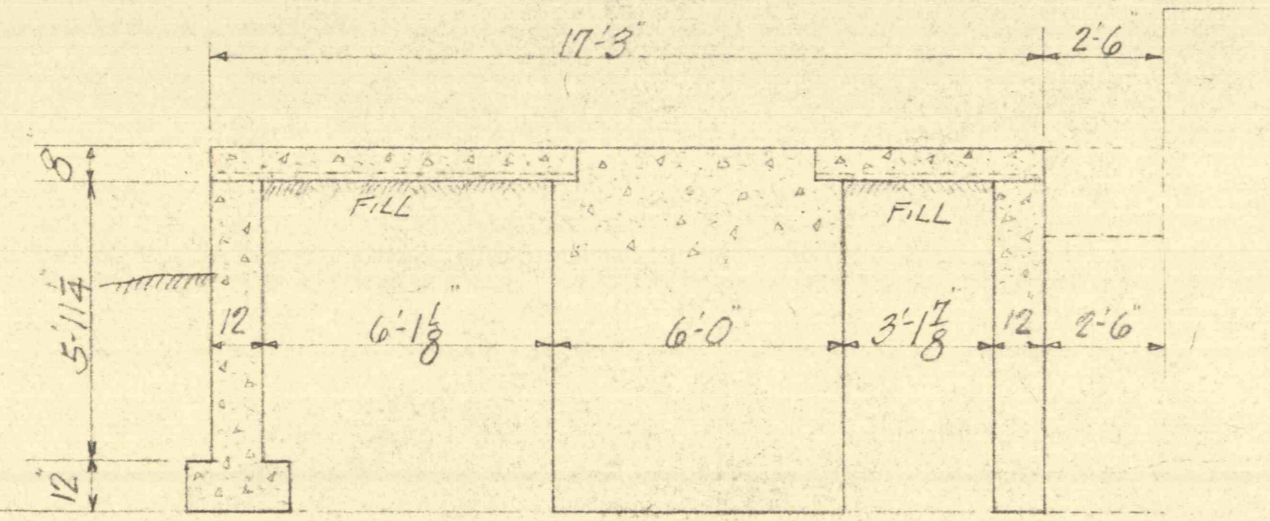
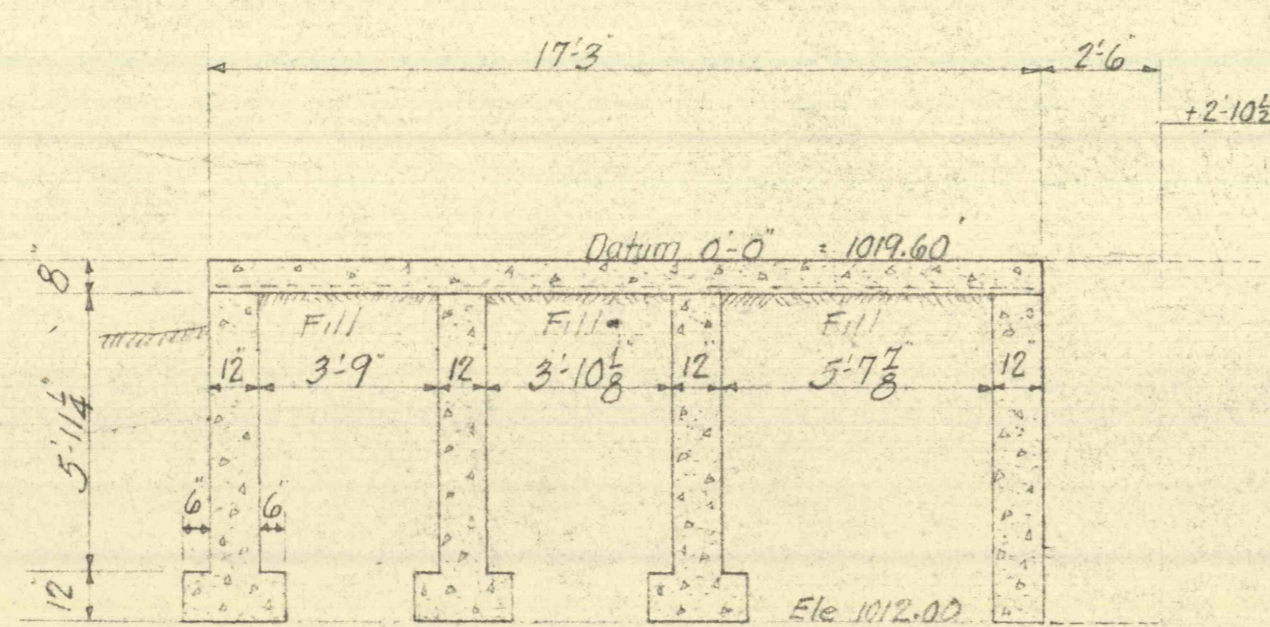
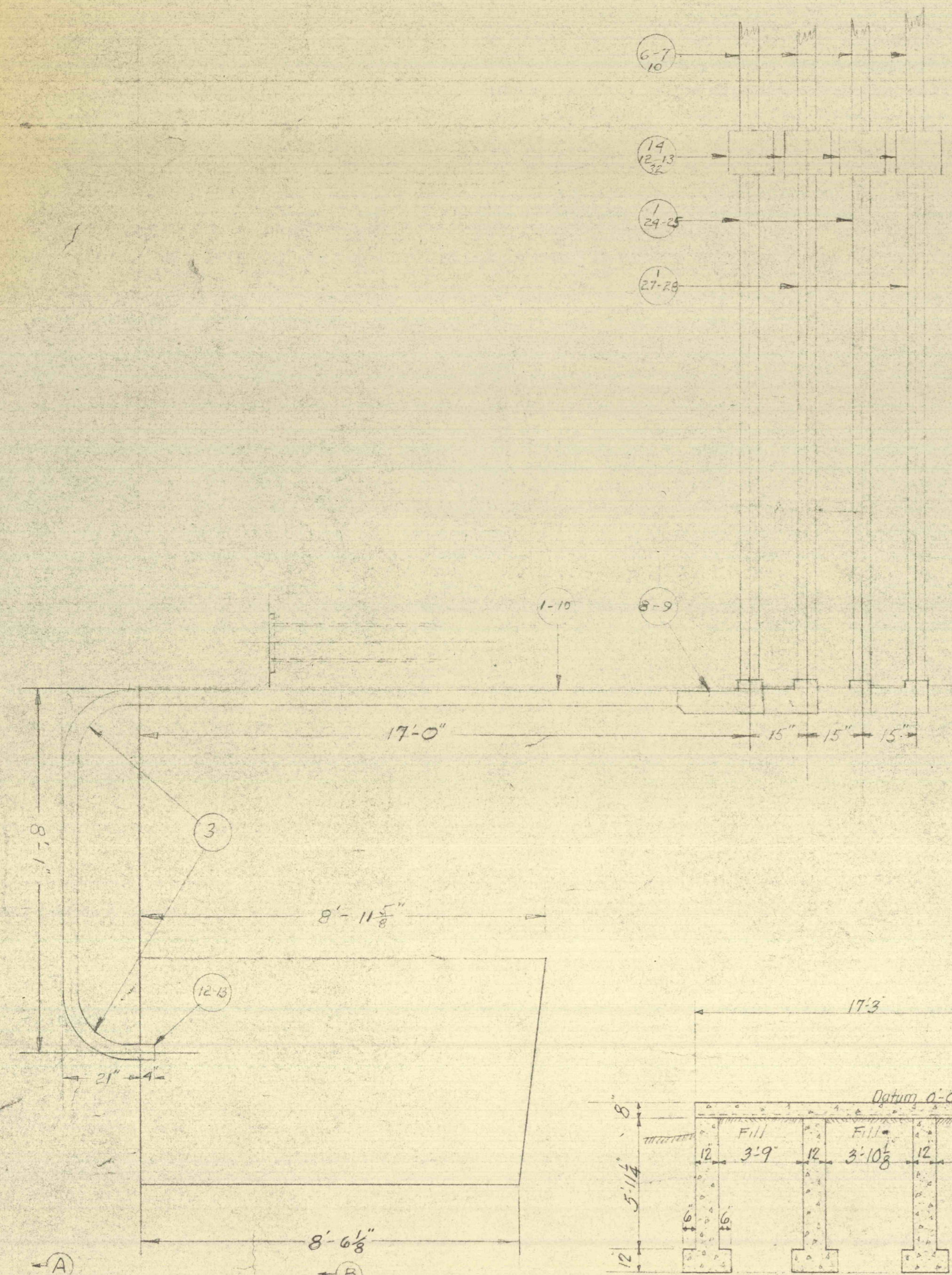
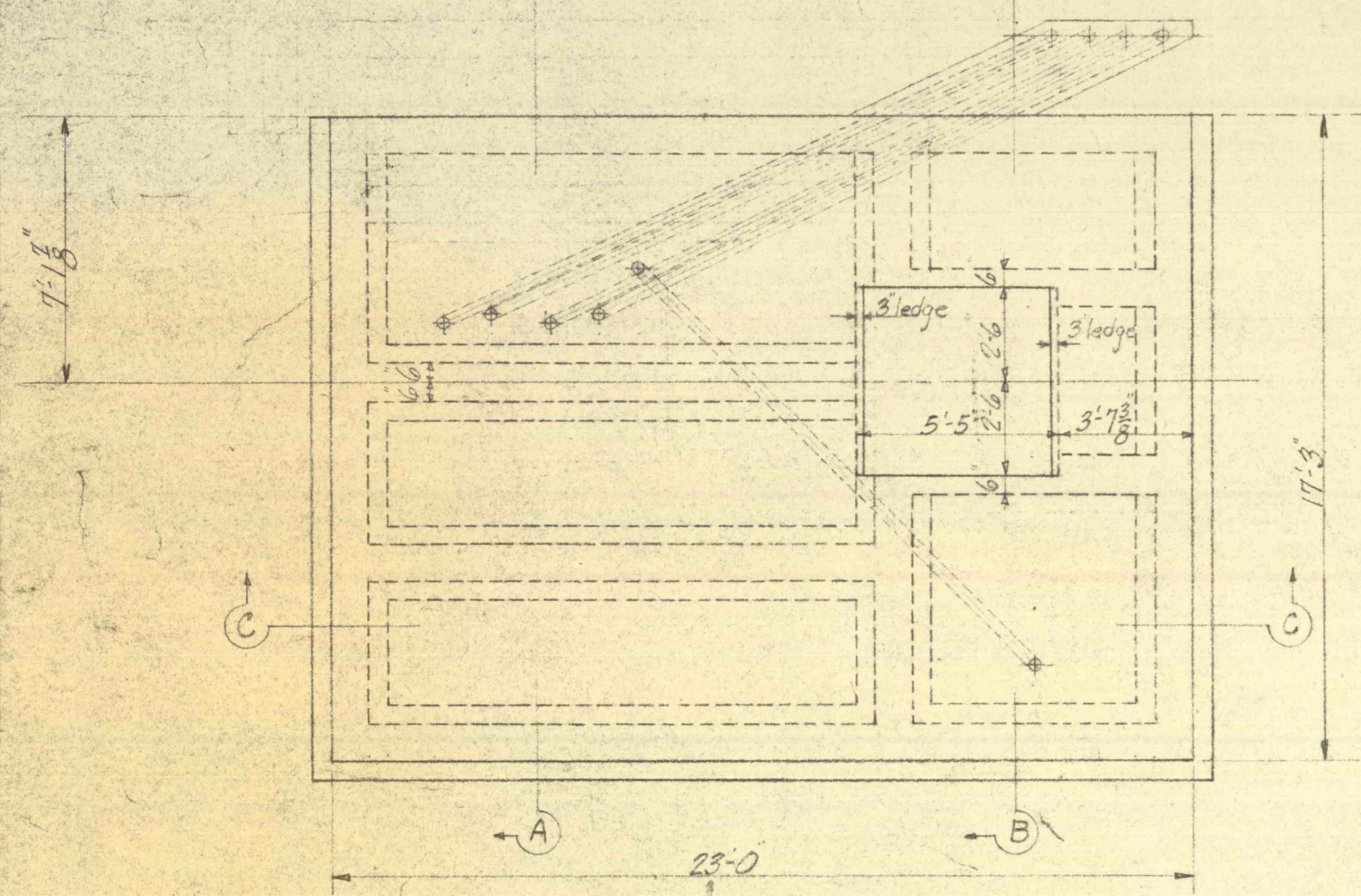


CONTINUE 4" FLEX CONDUIT & WIRES
ALONG EAST & NORTH WALLS TO MOTOR
JUNCTION BOXES.

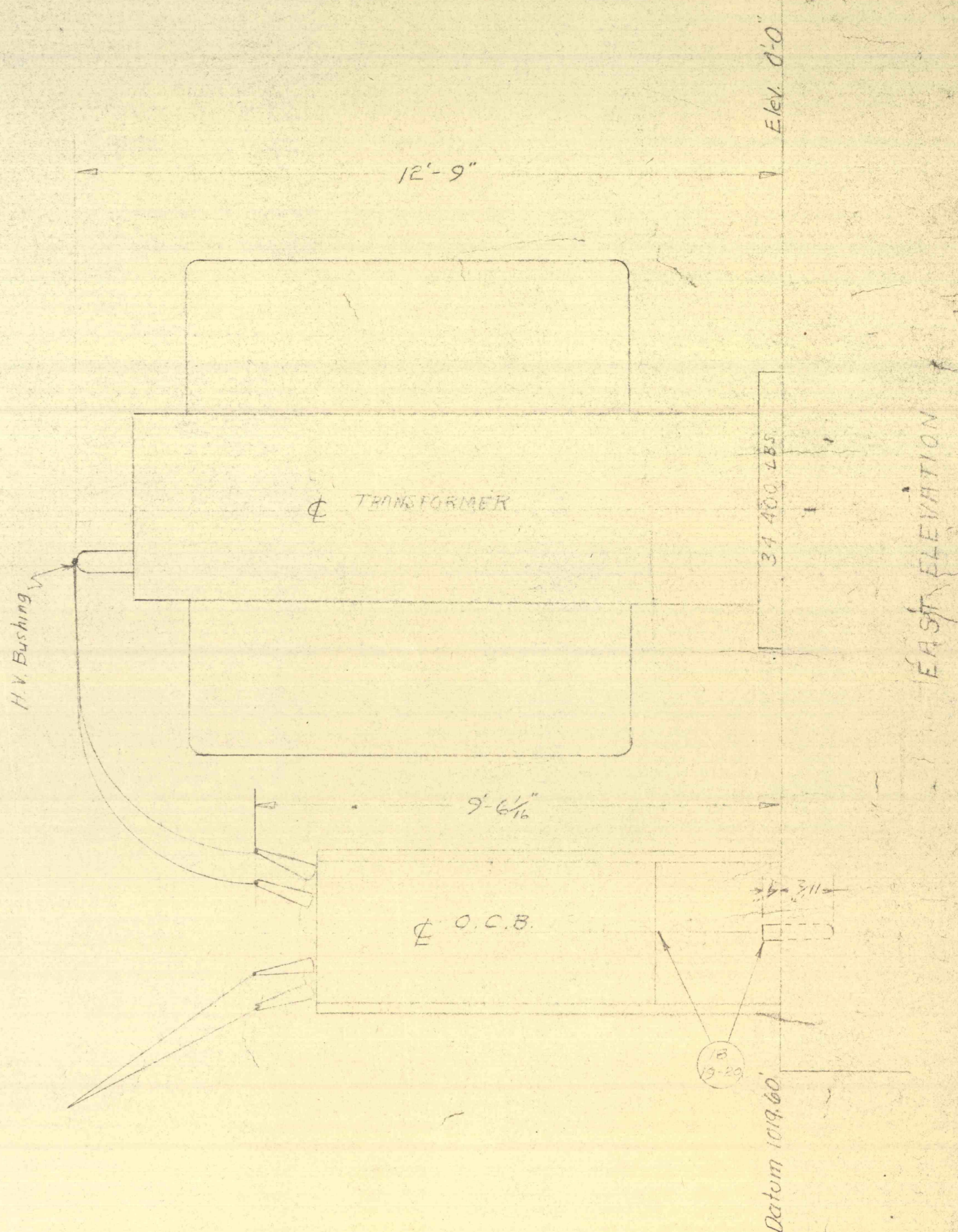
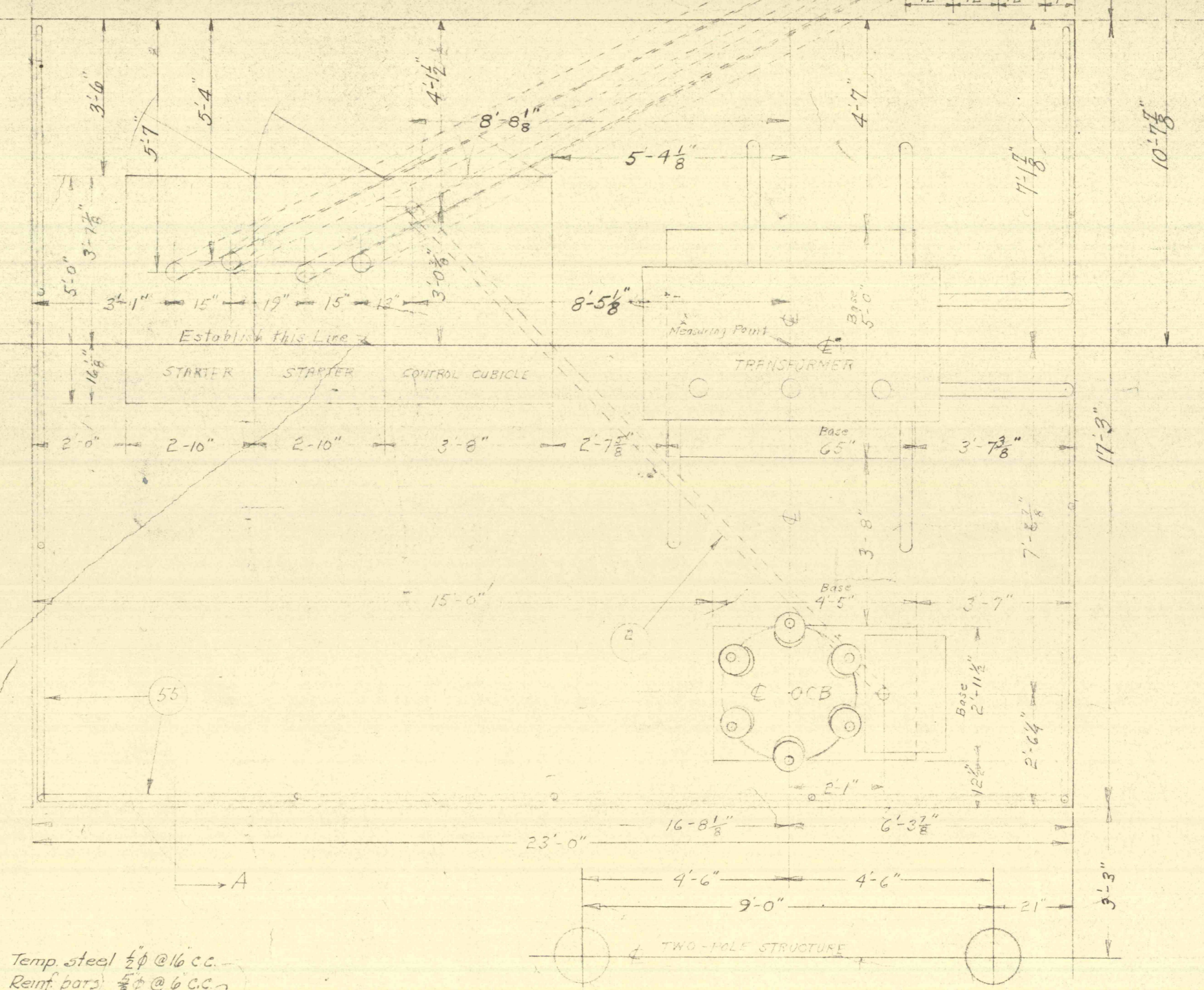
SECTION A-A



Temp steel $\frac{1}{2}$ " @ 16 c.c.
Reinf bars $\frac{3}{8}$ " @ 6 c.c.
#18 Ga Mason steel deck forms
or equal
TYPICAL REINFORCING



FOUNDATION PLAN
Scale 1/4" = 1'-0"



EAST ELEVATION

THE LEHIGH COAL & NAVIGATION CO.
LANSDOWN, PA.
Description: TAMAGUA 104.4 DEEP
WELL PUMPS - TRANSFORMER AND
SWITCHGEAR
Location: TAMAGUA MINE
Scale: 1/4" = 1'-0"
Dwg by: HSA
ED-358