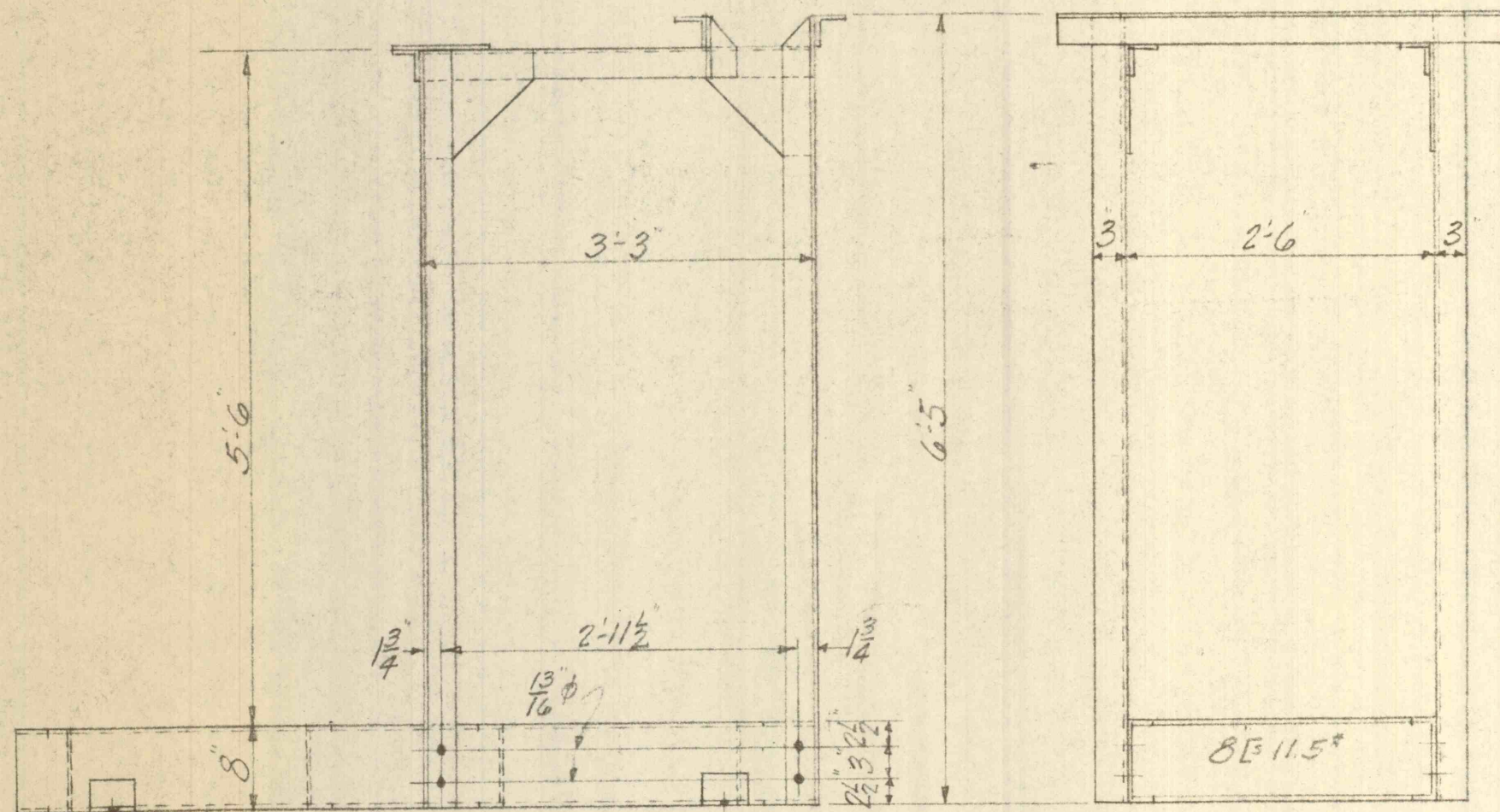


NOTES:  
 All angles 3 x 3 x 1/4"  
 All plates 1/4" thick  
 Stitch weld construction  
 Paint one shop coat



LEHIGH COAL & NAVIGATION CO.	
TAMAQUA #14 SHAFT	
STEEL SUPPORT FOR COOLERS & OIL TANKS	
DATE FEB 24 1958	DRAWING BY H.W.D.
5-3137	