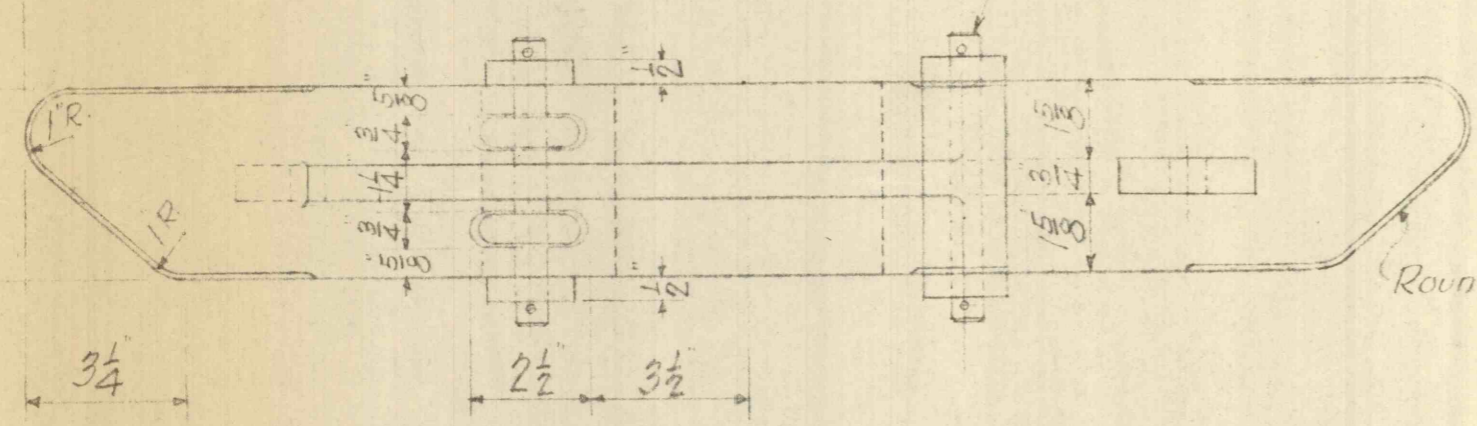
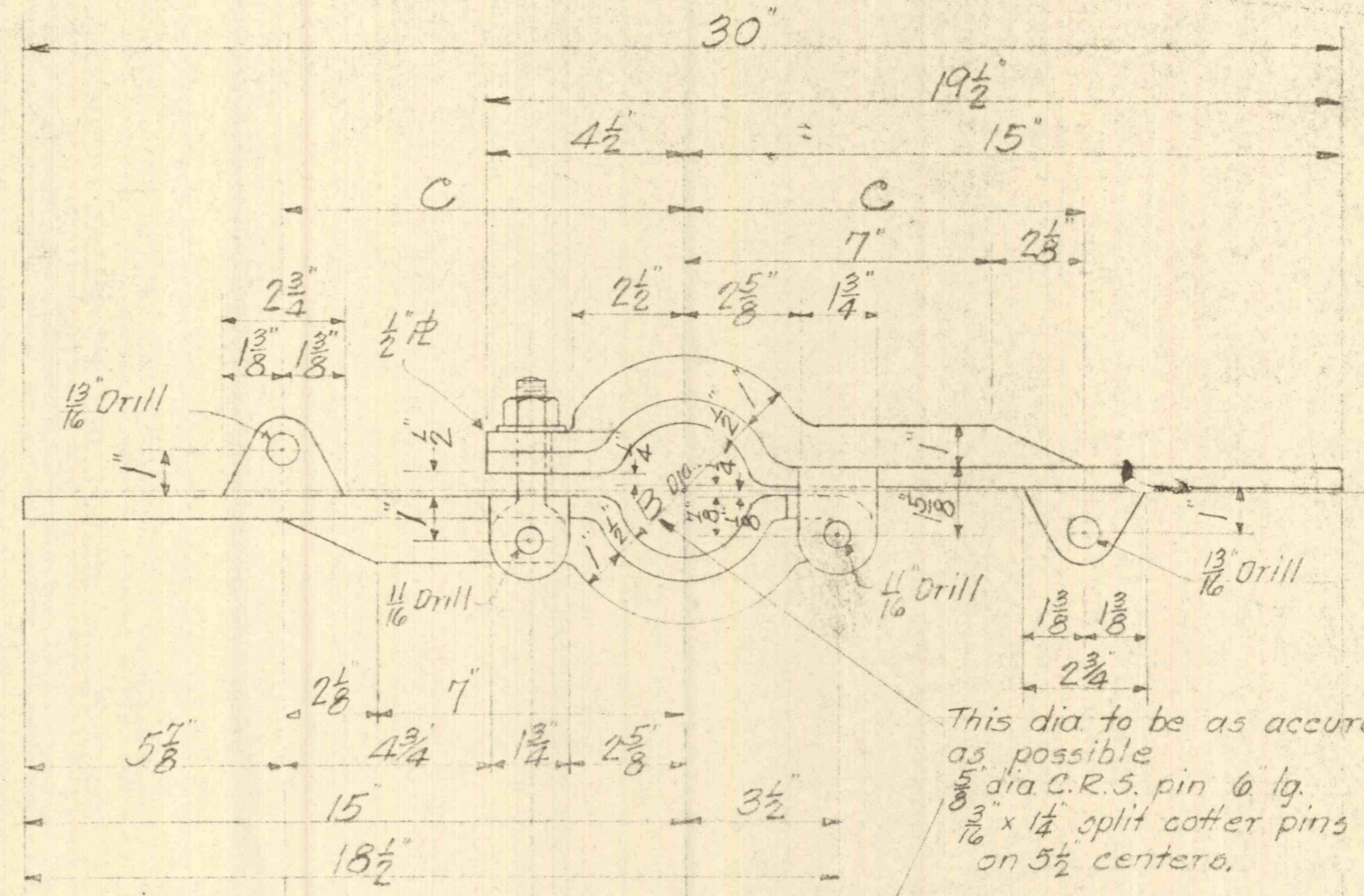


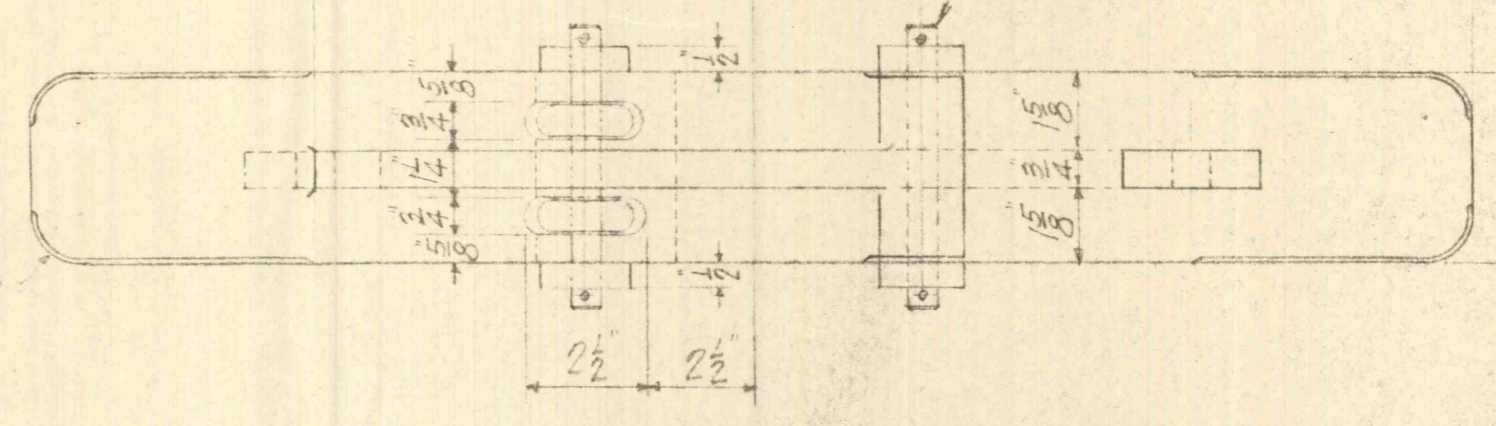
This dia to be as accurate as possible
 5/8 dia. C.R.S. pin 6" lg.
 3/16 x 1/4 split cotter pins on 5 1/2 centers



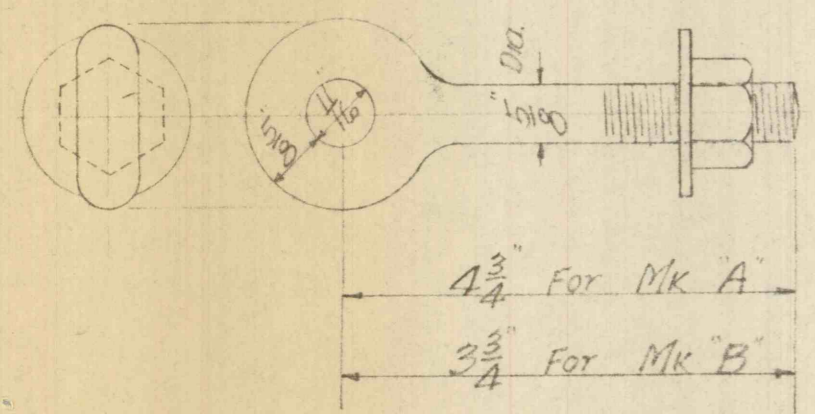
CLAMP FOR OIL TUBE ITEM #1



This dia to be as accurate as possible
 5/8 dia C.R.S. pin 6" lg.
 3/16 x 1/4 split cotter pins on 5 1/2 centers.



CLAMP FOR DRIVE SHAFT ITEM #2



2 - EYE BOLTS FOR ITEM #1 Mk "A"
 2 - EYE BOLTS FOR ITEM #2 Mk "B"

	GREENWOOD	TAMAQUA
A	5 9/16"	5 7/16"
B	3 7/16"	3 3/16"
C	8 1/4"	9 1/8"

Steel plate material
 All weld construction

LEHIGH COAL & NAVIGATION CO TAMAQUA #14 & GREENWOOD #10 SHAFTS	
DRIVE SHAFT & OIL TUBE CLAMPS	
DATE MAY 3 1956	DRAWN BY F.T.R.
	TRACED BY H.W.D.
5-3127	