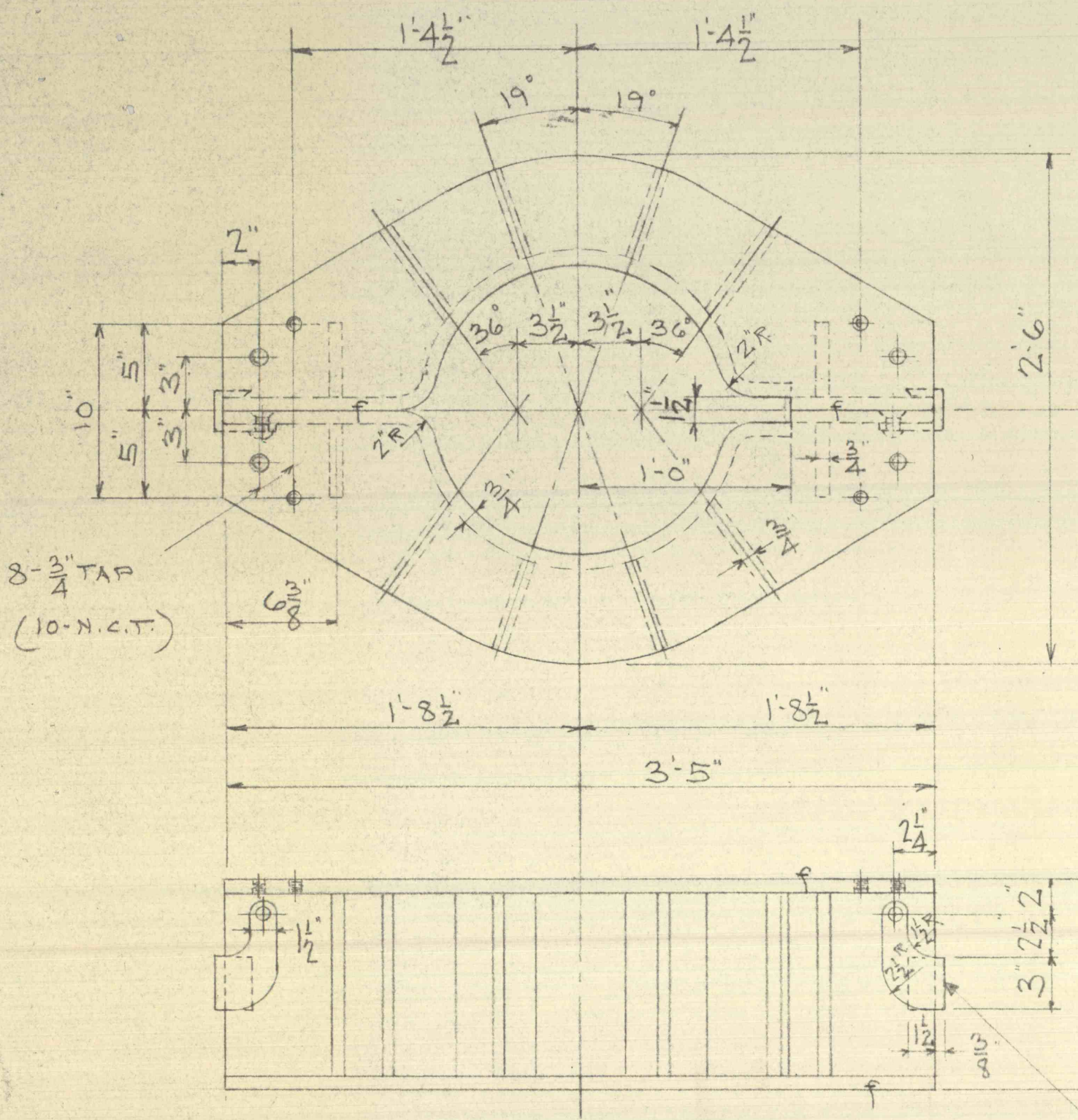
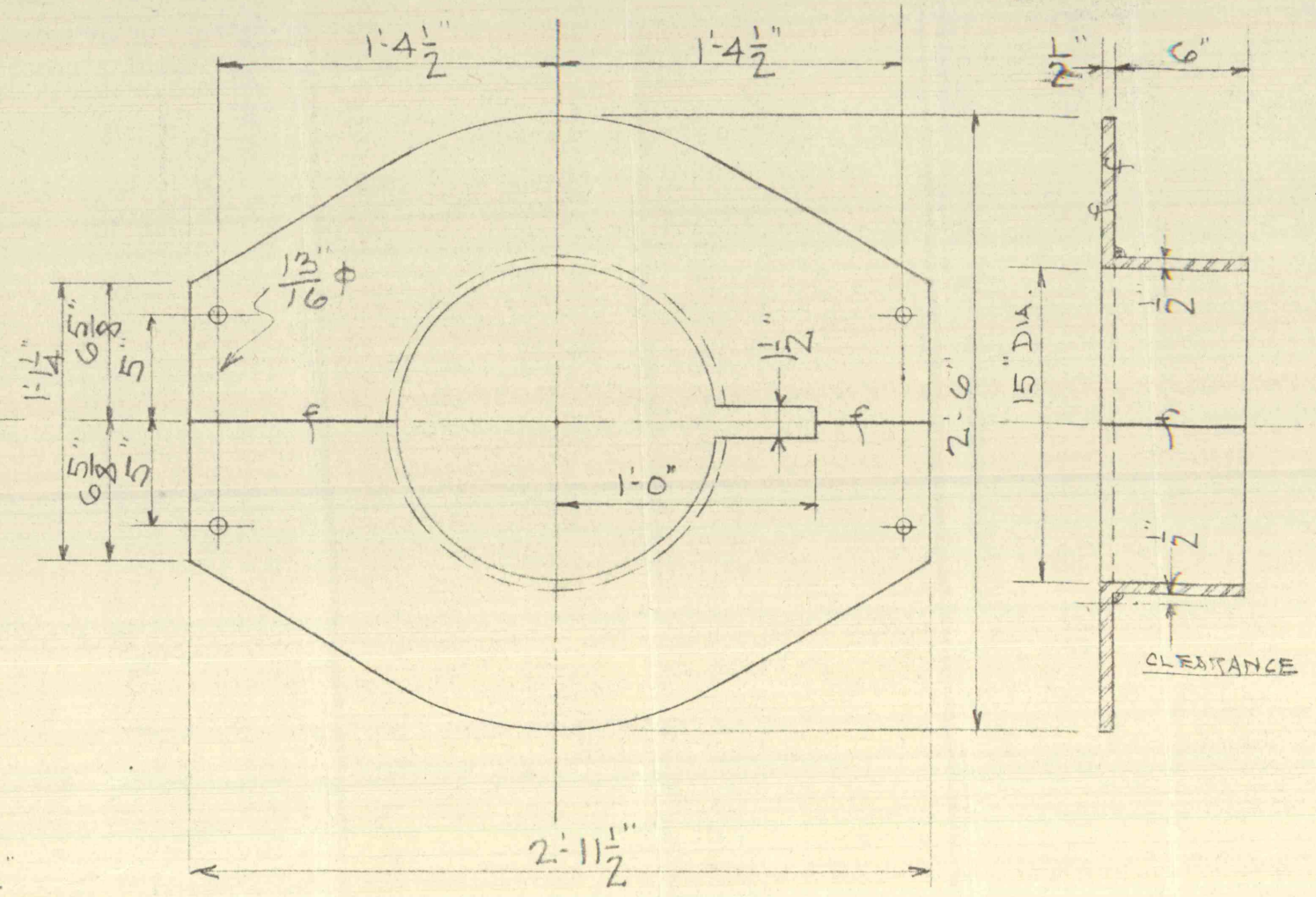
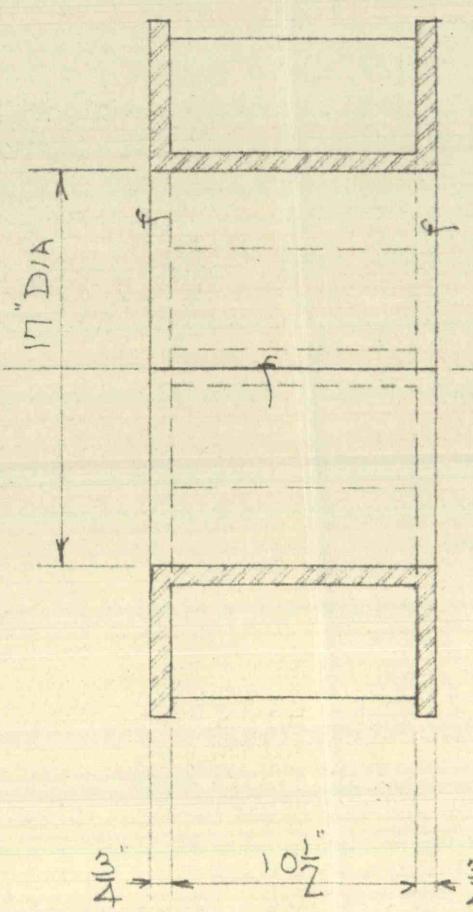


4-EYE BOLTS - STEEL



1-SUPPORT CLAMP - MK-1



1- ADAPTER BUSHING MK-3

(FURNISH 4 - 3/4 x 1 1/2 CAPSCREWS - HEX. HD. 10-N.C.T.)
FASTEN TO MK-1

ALL WELDED STEEL CONSTRUCTION
PAINT ONE SHOP COAT

LEHIGH COAL AND NAVIGATION CO. TAMAQUA #14 AND GREENWOOD #10 SHAFTS	
SUPPORT CLAMP	
DATE - JUNE 3, 1959	DRAWN BY - EER
S-3159	