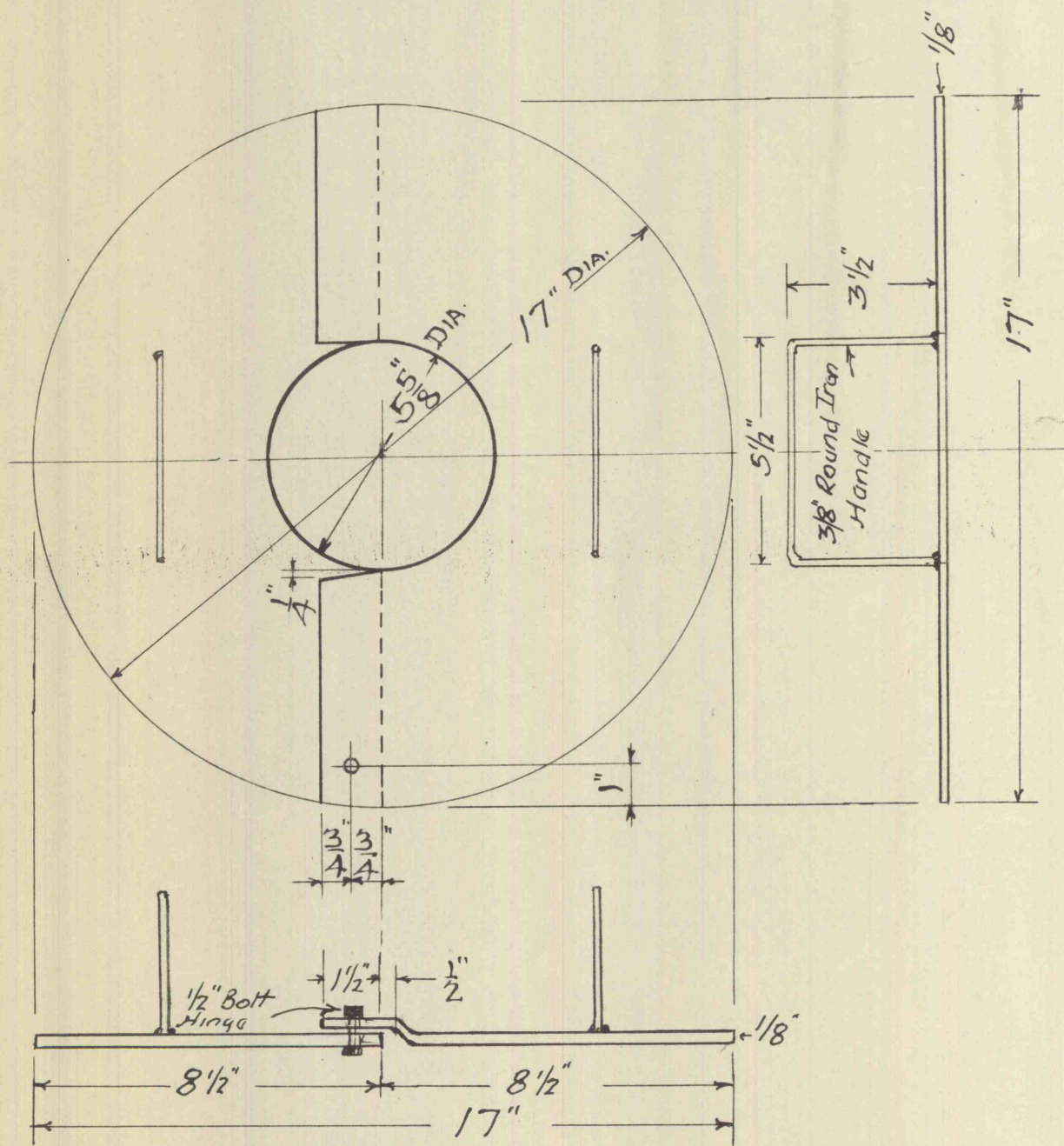
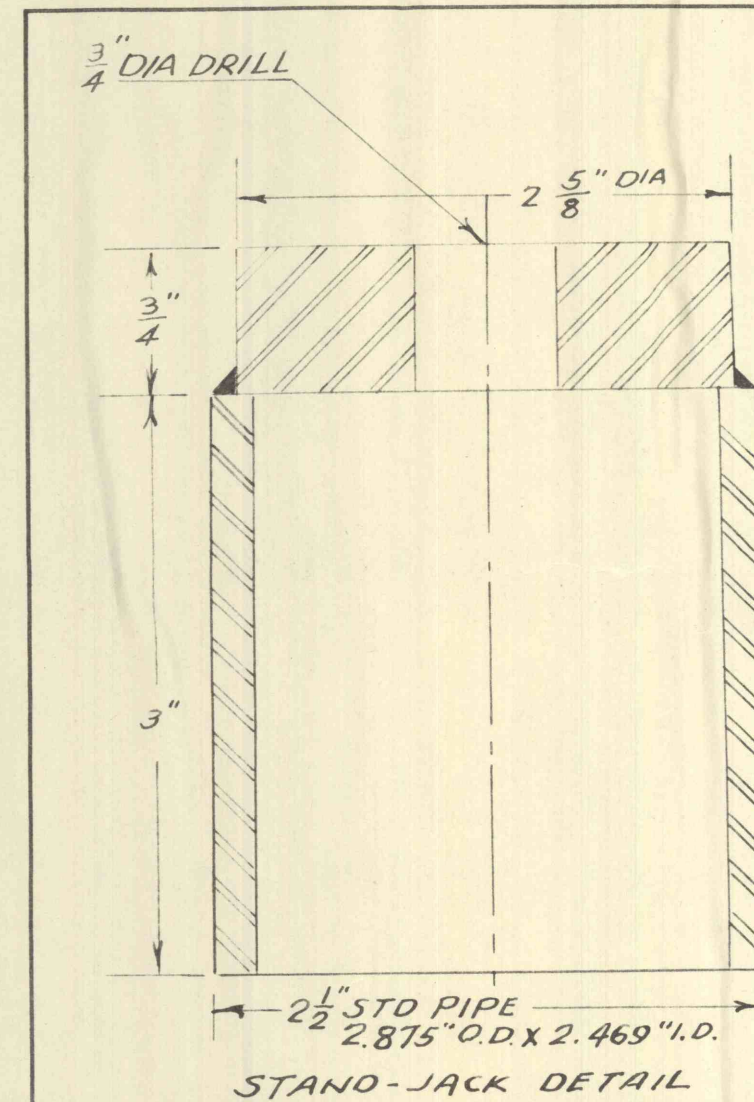


Spanner Wrench
1/2" = 1"



Column Assembly Cover
3" = 1'-0"



STAND-JACK DETAIL

BILL OF MATERIALS		
DESCRIPTION	PART NUMBER	QUANTITY REQUIRED
BLACKHAWK HOLLOW PUSH PULL PORTO-POWER RAMS	RC-426	4
BLACKHAWK PORTO-POWER HAND PUMPS	P-76	2
BLACKHAWK PUL RODS	Z1069	4
BLACKHAWK PUL ROD NUTS 3/4"-16 N.F. THREAD	Z1070	4
BLACKHAWK HYRAULIC HOSE 6'-0" LONG WITH COUPLER	Z914	2
BLACKHAWK HYRAULIC HOSE 2'-0" LONG (LIKE Z916 EXCEPT WITH ZH 604 FEMALE HALF COUPLER)		4
HEAVY DUTY HYRAULIC TEES 3/8" X 250#		2
3/8" SHORT NIPPLS		4
STAND-JACK (SEE DETAIL ON THIS SHEET)		4

THE LEHIGH VALLEY AND NAVIGATION COMPANY
 GREENWOOD MINE PROJECT No. 5 AND TAMARUA MINE PROJECT No. 7
 BLACKHAWK HYDRAULIC SYSTEM WITH FOUR JACKS FOR INSTALLING
 SPRING LOADED TUBING ON PEERLESS DEEP WELL PUMPS
 SCALE 1" = 1'
 MAY 5, 1959
 REFERENCE - PEERLESS PUMP DIVISION
 FOOD MINE AND CHEMICAL CORPORATION
 INDIANAPOLIS, INDIANA
 DWG A-277A01A

53158