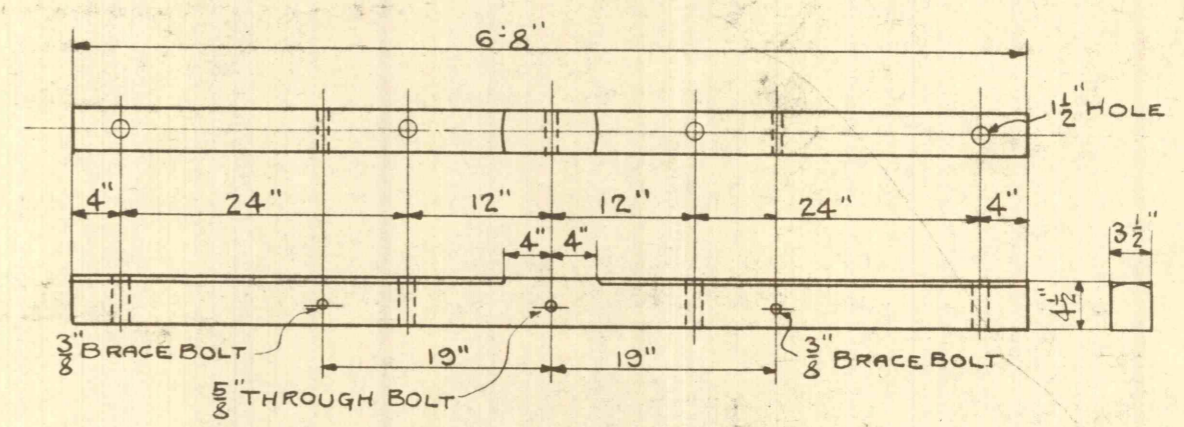
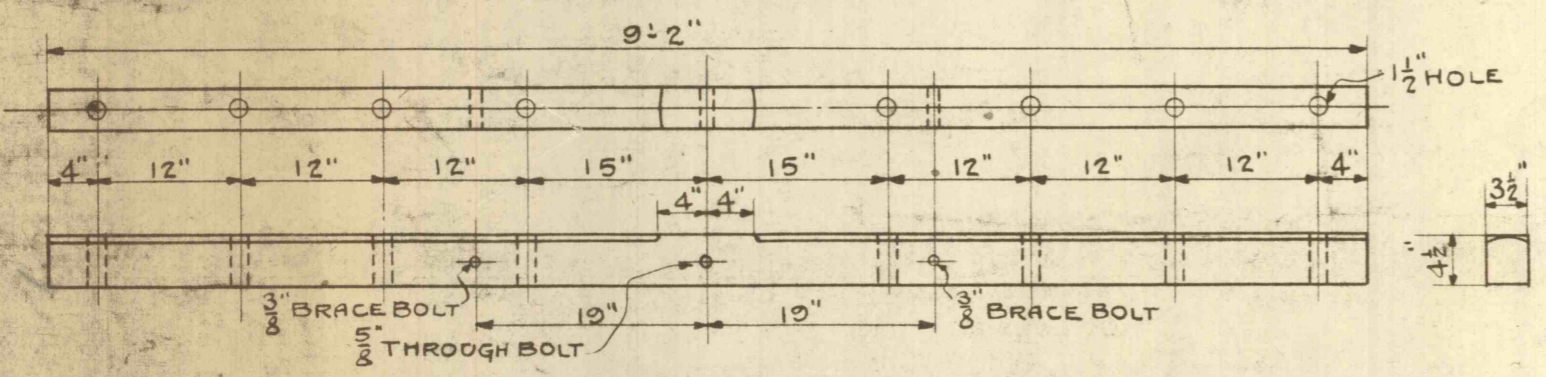


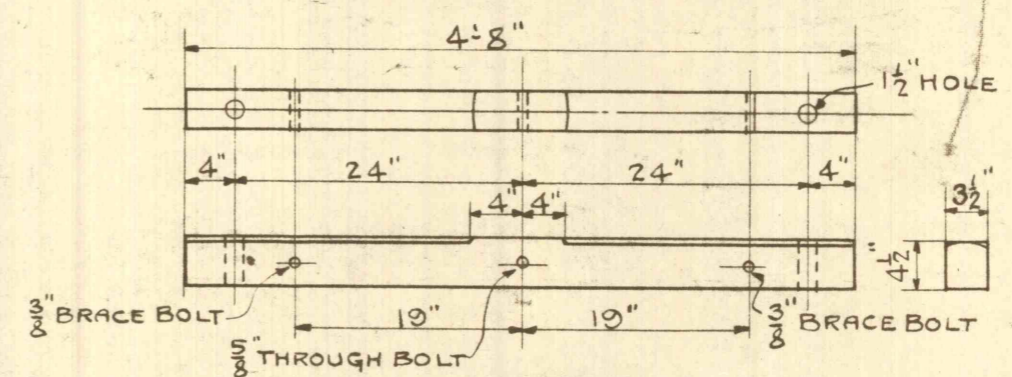
10 PIN ARM FORM NO 1



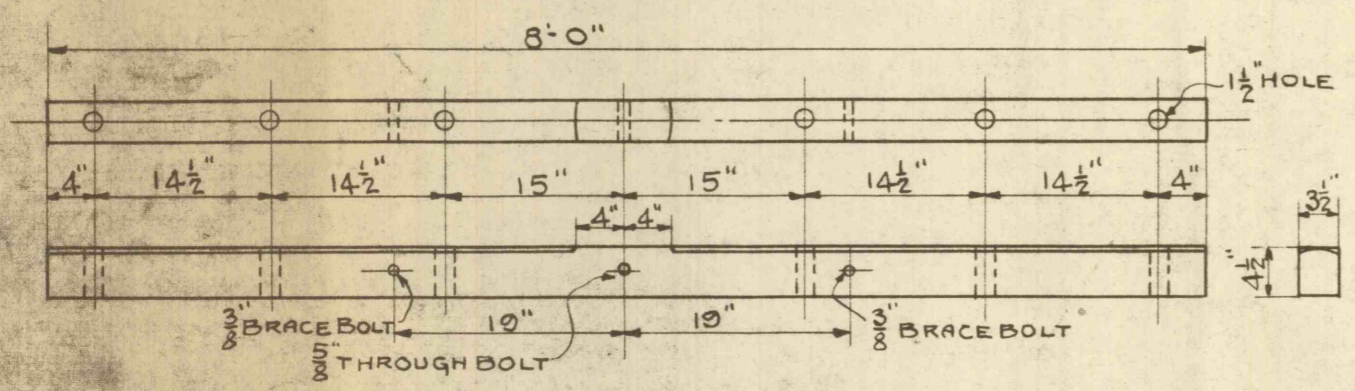
4 PIN ARM FORM NO 4



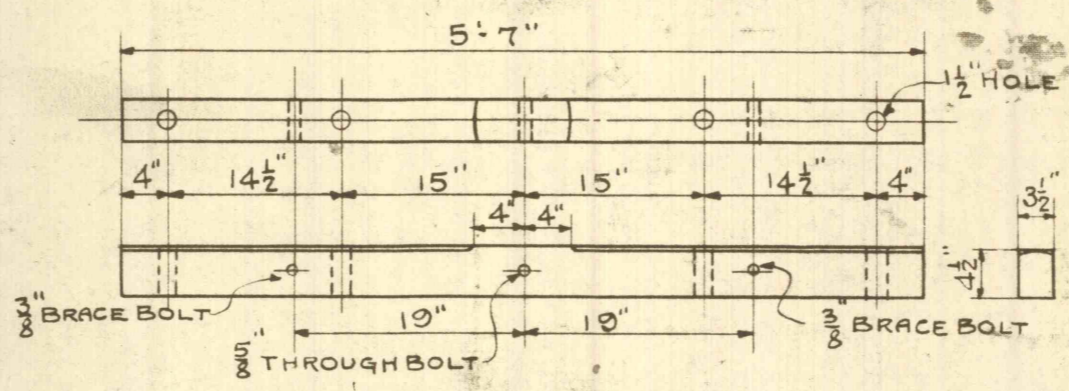
8 PIN ARM FORM NO 2



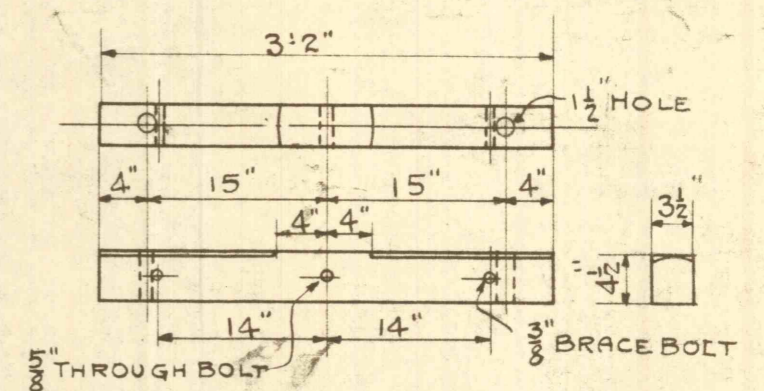
2 PIN ARM FORM NO 5



6 PIN ARM FORM NO 3



4 PIN ARM FORM NO 6



2 PIN ARM FORM NO 7

<b>THE LEHIGH COAL AND NAVIGATION CO.</b>	
LANSFORD, PENNA.	
MECH. DEPT.	
Description	STANDARD CROSS ARMS
Location	
Scale	3/4" = 1'-0"
Date	JULY 6 <sup>TH</sup> 1915
Revised	
Approved	Made by Traced by <i>D.O.M.</i> Checked by
DRAWING NO.	
<b>S-645</b>	