

55-17

JOHNST

ROBERT GRAY TRACT

OLD CREEK BED

2467

2728

28168

16 87.6

26.15

21005

2728

226.1

280.2

17 87.7

Fidler Contracting Co.

Average Depth 35'

No. 1 Vein

282.3

287.3

282.3

280.2

282.3

280.2

282.3

280.2

282.3

280.2

282.3

280.2

282.3

280.2

282.3

280.2

282.3

280.2

282.3

280.2

282.3

280.2

282.3

280.2

282.3

280.2

282.3

280.2

282.3

280.2

282.3

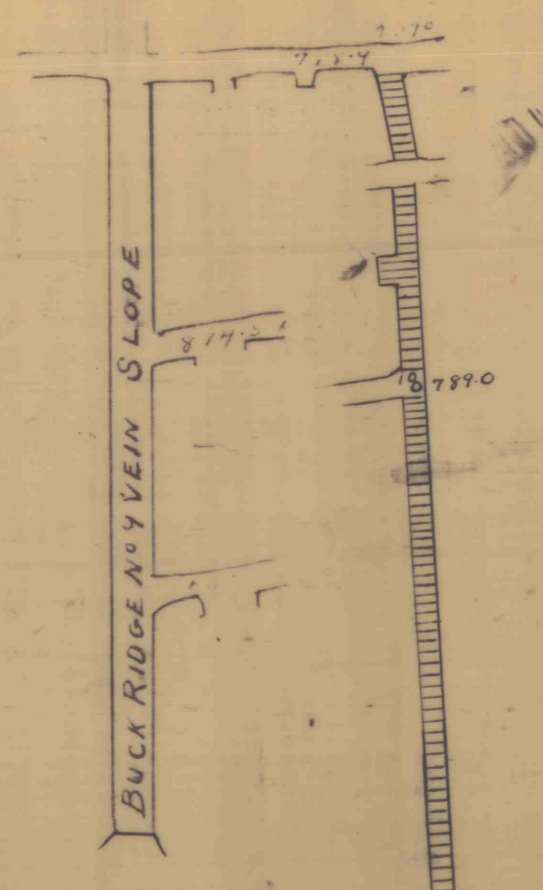
280.2

PILLAR BETWEEN BUCK RIDGE AND CORBIN COLLIERIES



THOM FAULT

JOHNSTON AND RENSHAW TRACT



Buck Ridge No. 1 Vein Workings  
No. 1 Vein Water Level.

Anticipate  
business