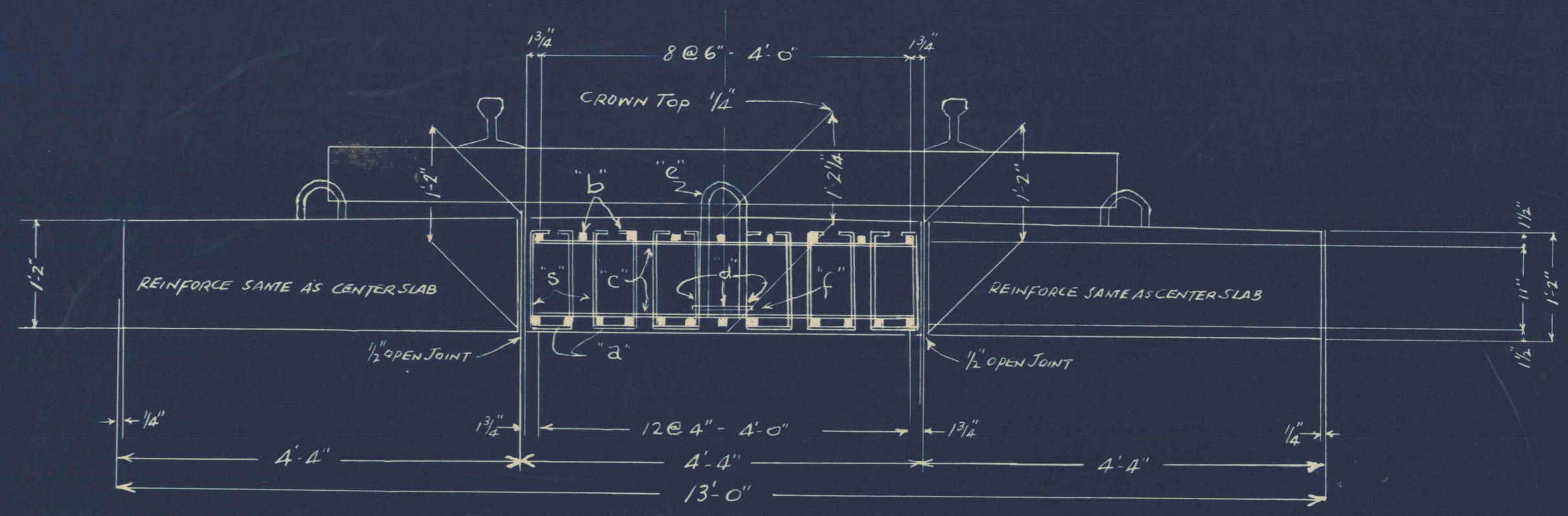
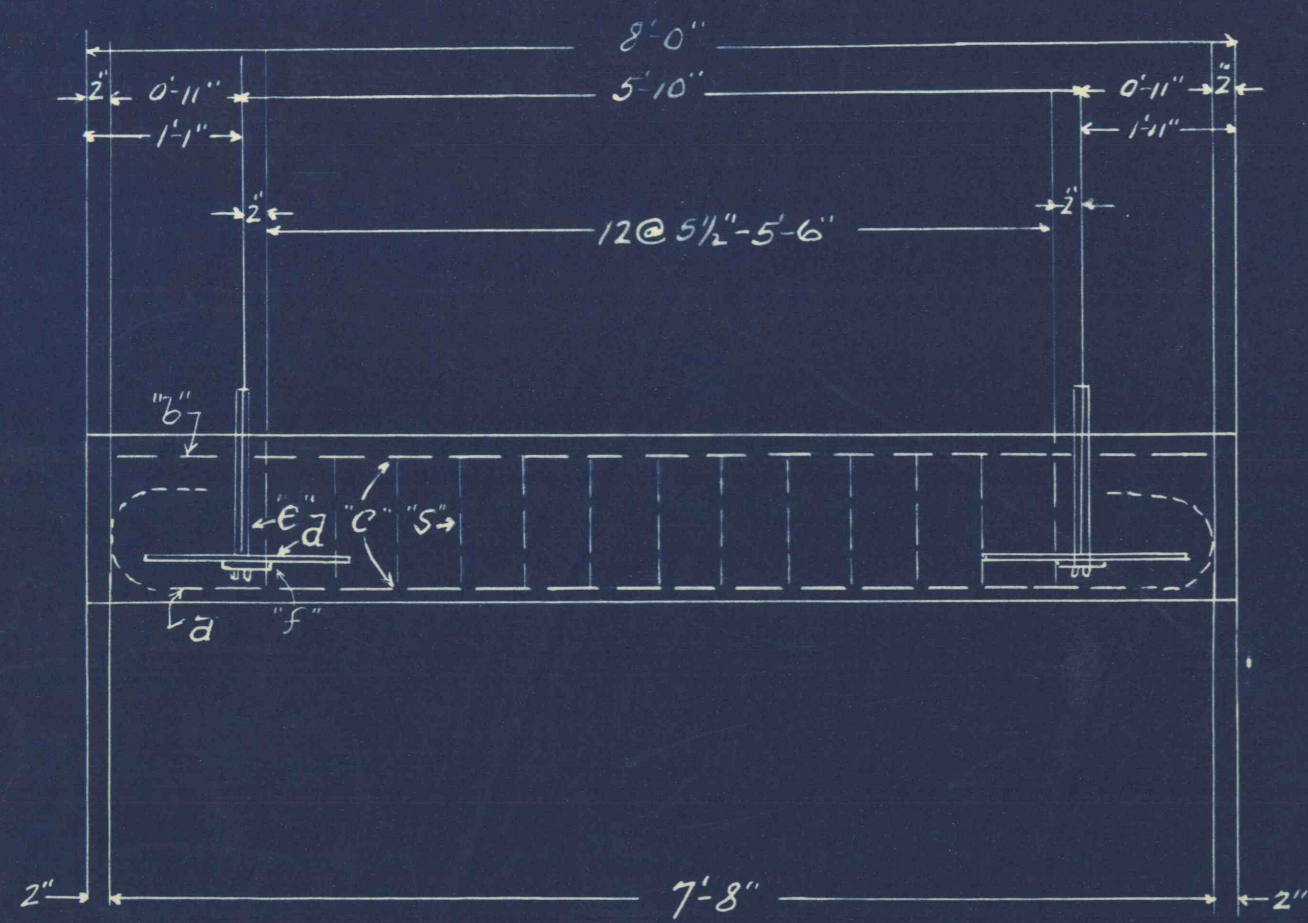
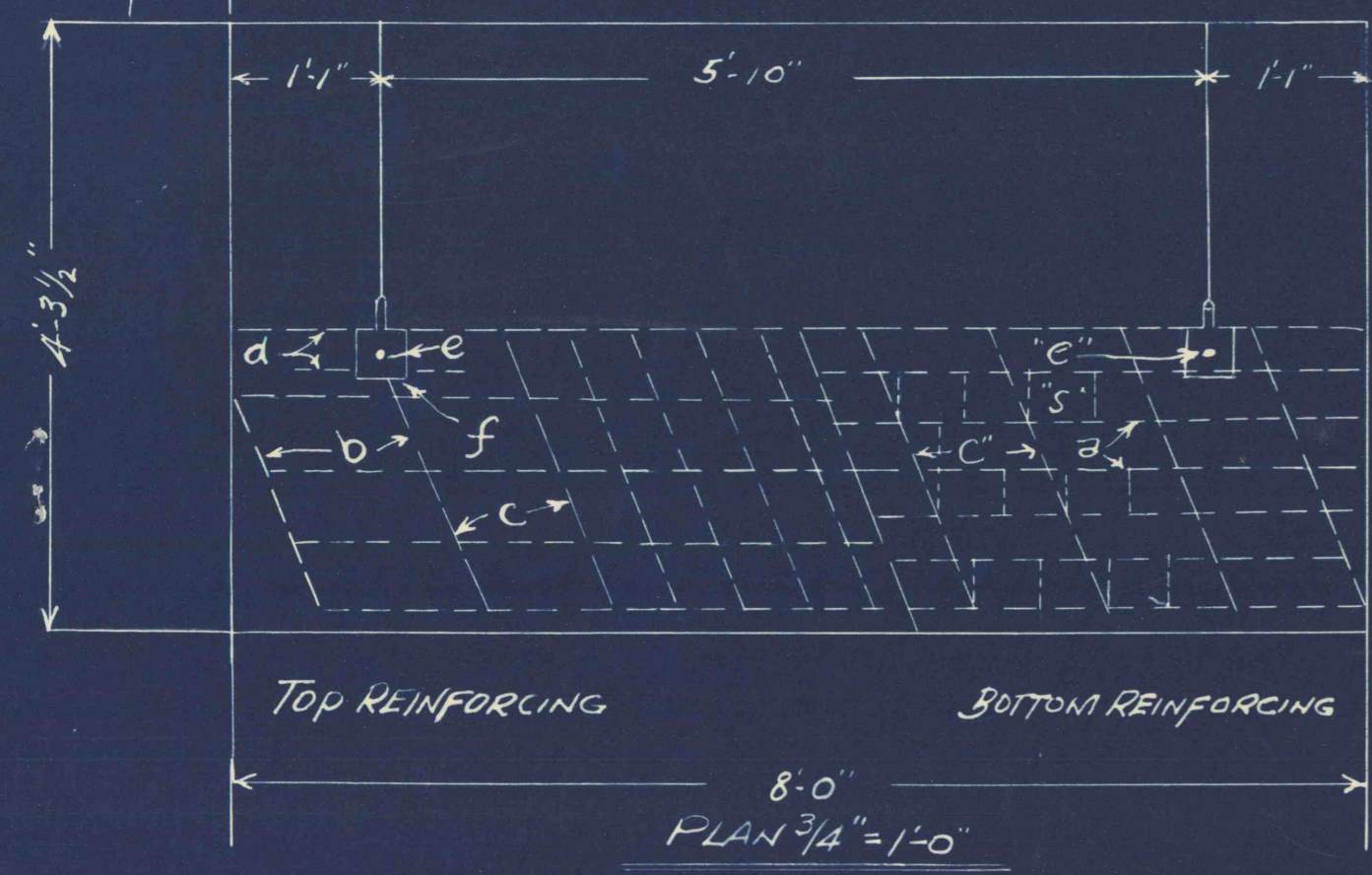


TABLE OF STEEL FOR ONE SLAB - 19 SLABS REQUIRED

Pcs.	MK	SIZE	BENDING	LOCATION
78	5	$\frac{3}{8}$ " ϕ x 2'-10 1/2"		STIRRUPS
13	a	1" ϕ x 10'-2"		LONG. IN BOTTOM
9	b	1" ϕ x 7'-8"	STRAIGHT	LONG. IN TOP
48	c	$\frac{3}{8}$ " ϕ x 4'-5"	DO	TIE BARS TOP & BOT.
6	d	$\frac{3}{8}$ " ϕ x 1'-6"	DO	LIFT LOOP BARS
2	e	$\frac{7}{8}$ " ϕ x 3'-3" WITH 2- $\frac{7}{8}$ " SQ HUTS		LIFT LOOP
2	f	4" x $\frac{3}{8}$ " - 0'-10 7/8" PLATE		LIFT LOOP PLATE



DESIGN DATA

LOADING - COOPERS E-60 + 50% IMPACT
 $f_s = 20000 \#/\phi^2$ $f_c = 3500 \#/\phi^2$ $f_c = 1200 \#/\phi^2$
 $n = 10$ $u = 175$ $v = 210 \#/\phi^2$

FLUME TO BE CONSTRUCTED AT APPROXIMATELY
 STATION 80+31 OF LEHIGH & NEW ENGLAND RAILROAD COMPANY SURVEY

THE LEHIGH COAL & NAVIGATION CO.
 COALDALE No. 8 MINE
 PROPOSED REINFORCED CONCRETE
 SLAB COVERED FLUME
 SCALE AS SHOWN AUGUST 28, 1957