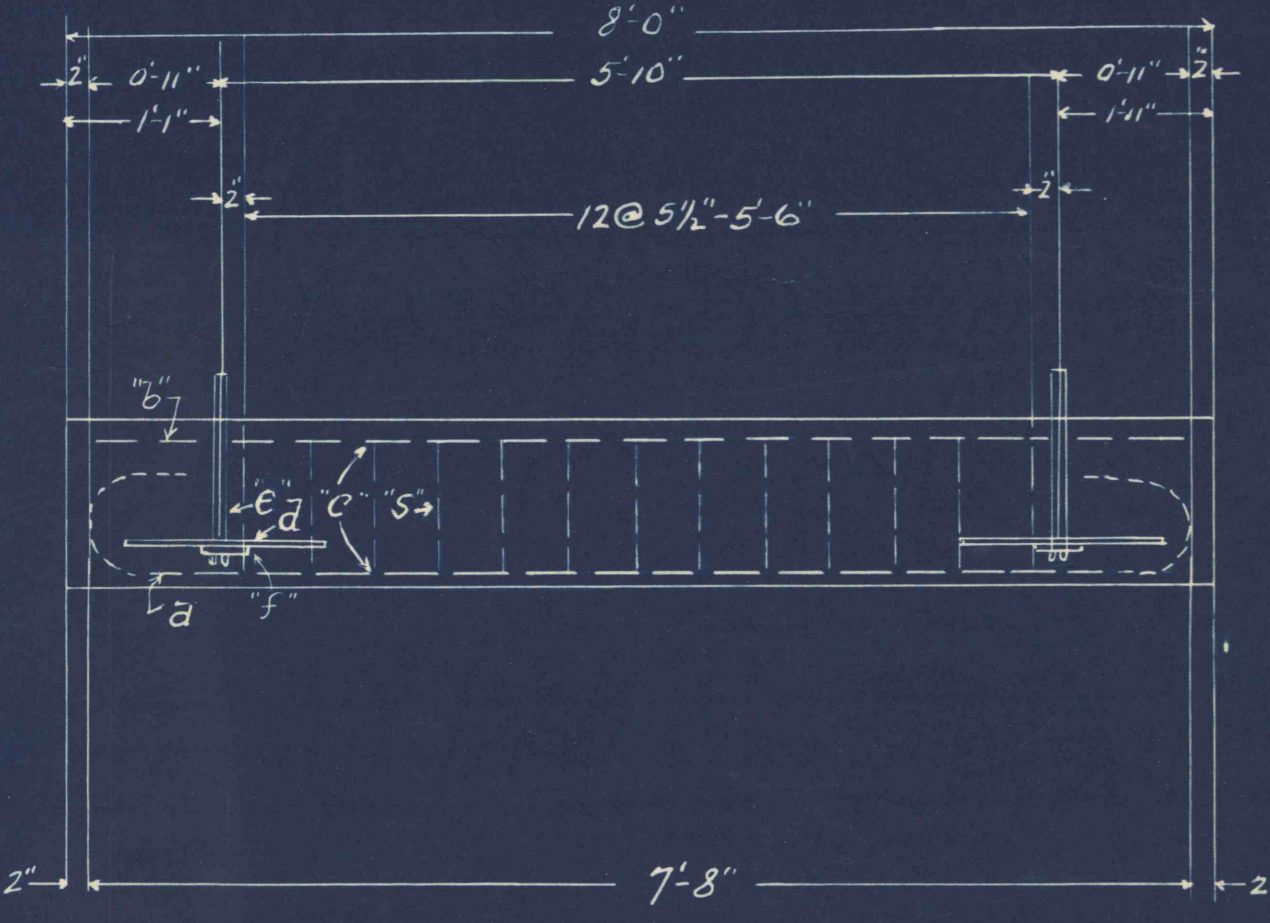
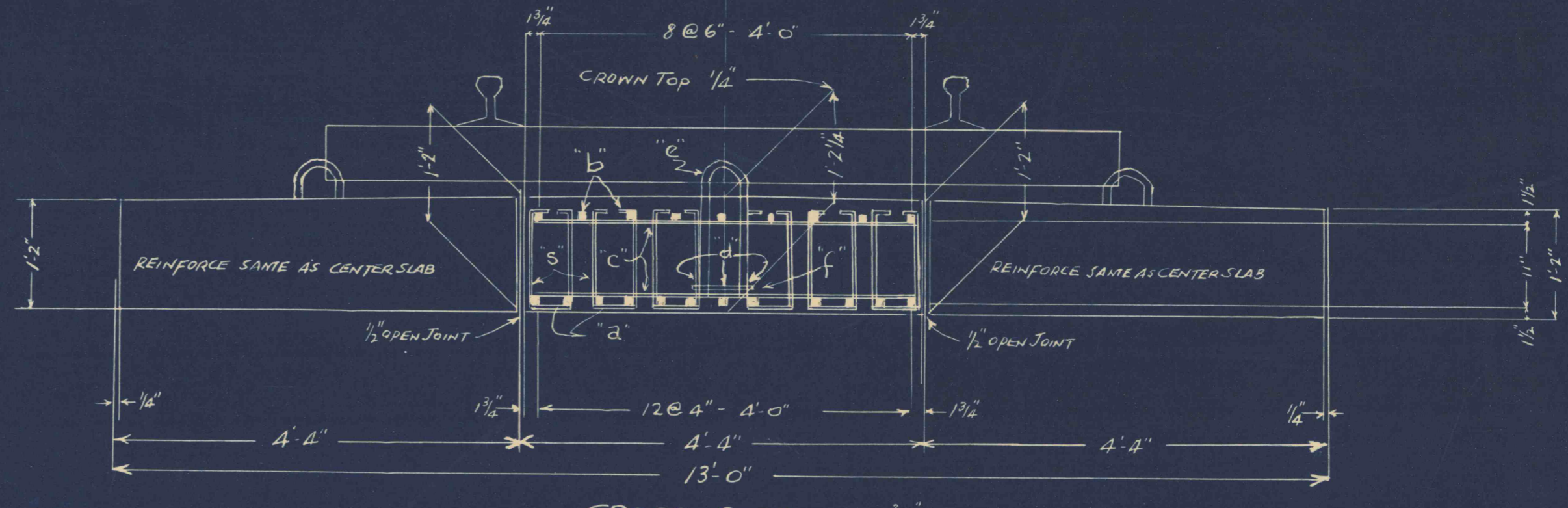


TABLE OF STEEL FOR ONE SLAB - 19 SLABS REQUIRED

PCS.	MK	SIZE	BENDING	LOCATION
78	5	3/8" $\phi$ x 2'-10 1/2"		STIRRUPS
13	a	1" $\phi$ x 10'-2"		LONG. IN BOTTOM
9	b	1" $\phi$ x 7'-8"	STRAIGHT	LONG. IN TOP
48	c	3/8" $\phi$ x 4'-5"	DO	TIE BARS TOP & BOT.
6	d	3/8" $\phi$ x 1'-6"	DO	LIFT LOOP BARS
2	e	7/8" $\phi$ x 3'-3" WITH 2-7/8" SQ HUTS		LIFT LOOP
2	f	4" x 3/8" - 0'-10 7/8" PLATE		LIFT LOOP PLATE



LONGITUDINAL SECTION 3/4" = 1'-0"



CROSS SECTION 3/4" = 1'-0"

DESIGN DATA

LOADING - COOPERS E-60 + 50% IMPACT  
 $f_s = 20000 \text{ #/in}^2$   $f_c = 3500 \text{ #/in}^2$   $f_c = 1200 \text{ #/in}^2$   
 $n = 10$   $u = 175$   $v = 210 \text{ #/in}^2$

FLUME TO BE CONSTRUCTED AT APPROXIMATELY  
 STATION 80431 OF LEHIGH & NEW ENGLAND RAILROAD COMPANY SURVEY

THE LEHIGH COAL & NAVIGATION CO.  
 COALDALE No. 8 MINE  
 PROPOSED REINFORCED CONCRETE  
 SLAB COVERED FLUME  
 SCALE AS SHOWN AUGUST 28, 1957