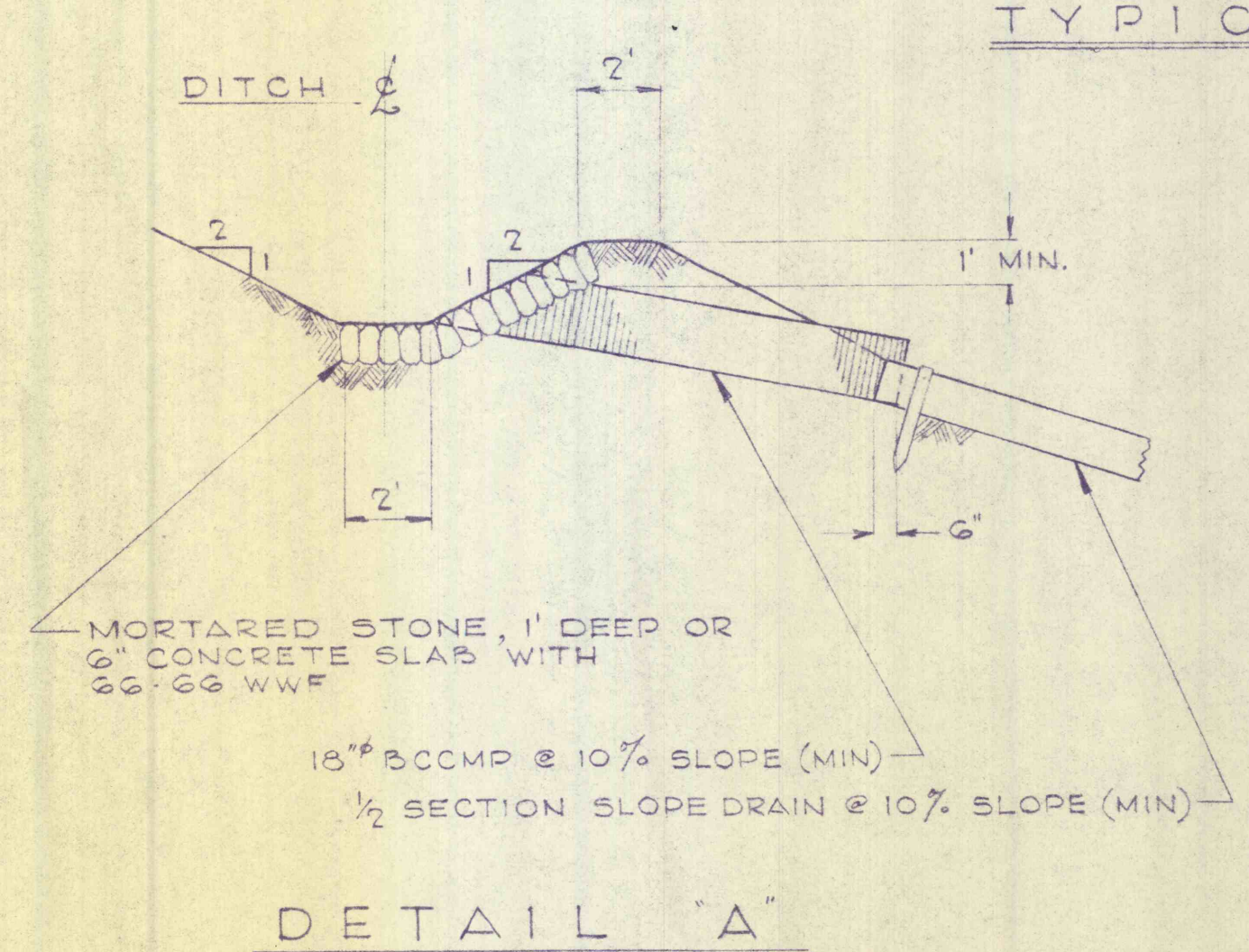
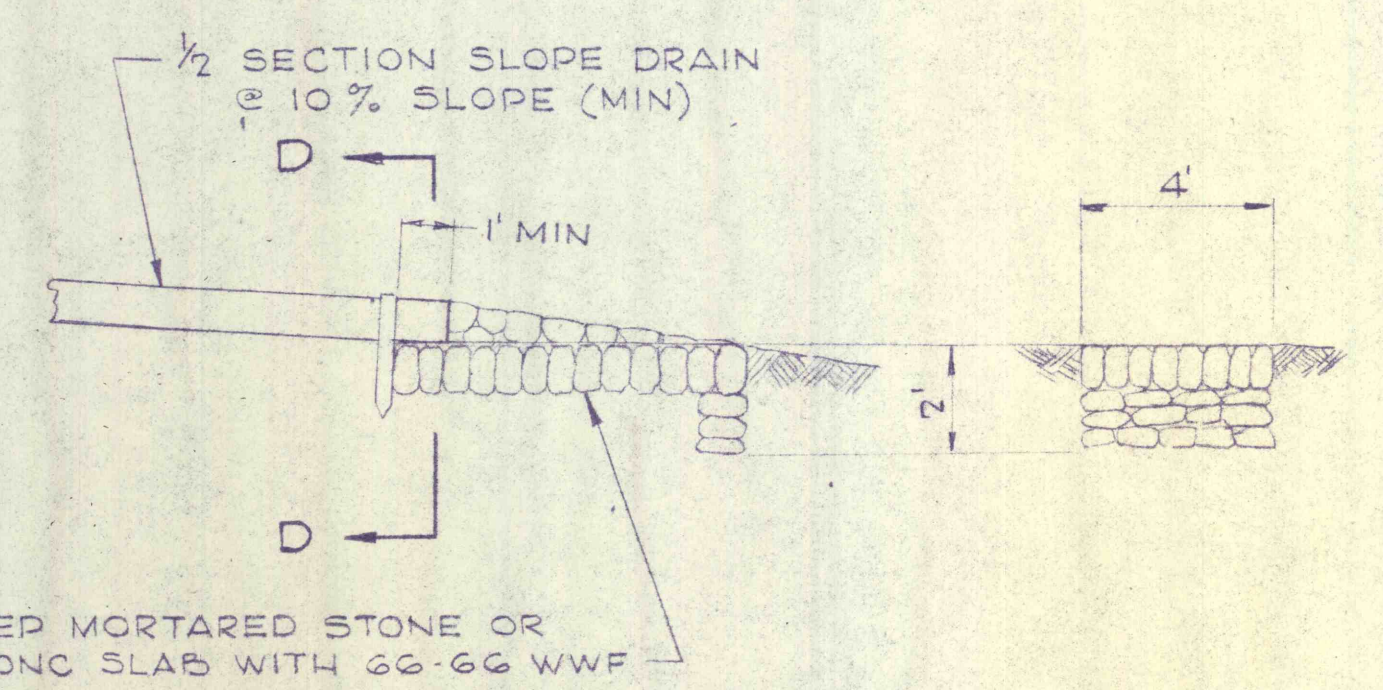


**SECTION**  
**TYPICAL PLAN & SECTION AT DRAINAGE STRUCTURE**  
 SCALE: 1"=10' HORIZ, 1"=10' VERT

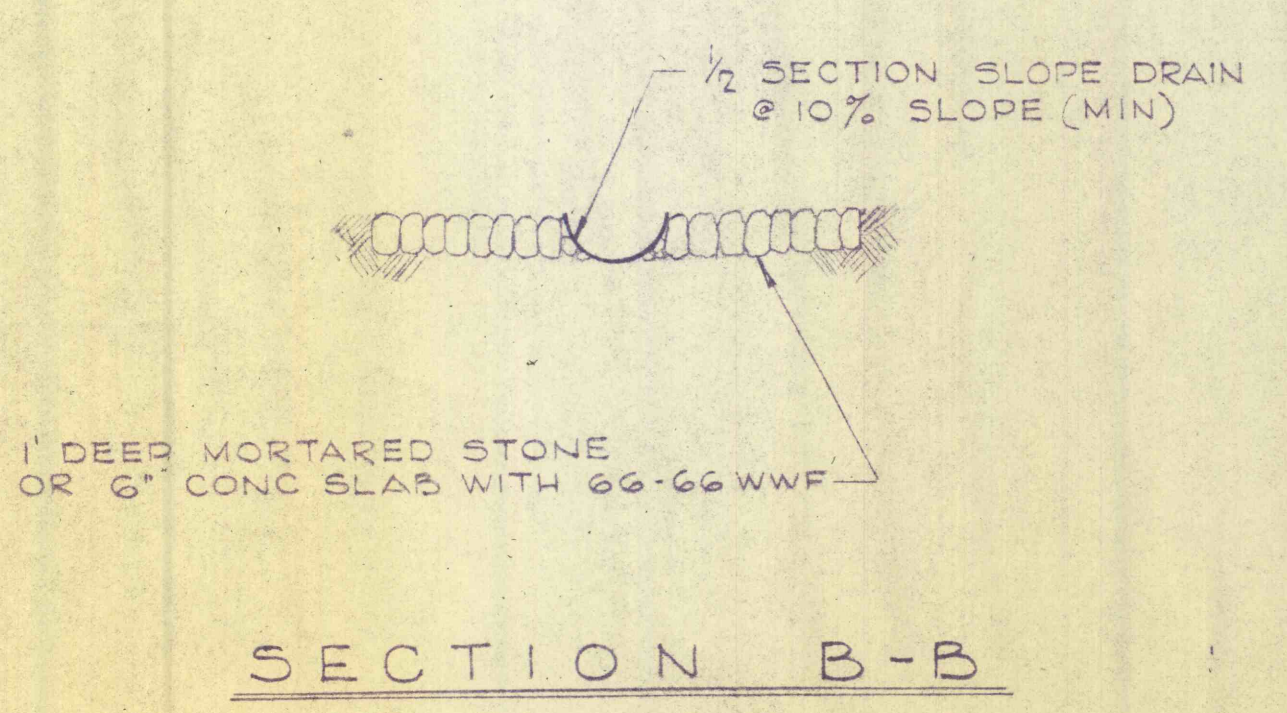
NOTE: SEE DRAWING NO. 1 THRU 5 FOR LOCATIONS, SIZES & SLOPES.  
 SECTION & DETAILS IS FOR STA 422+50, OTHER STATIONS TYPICAL.



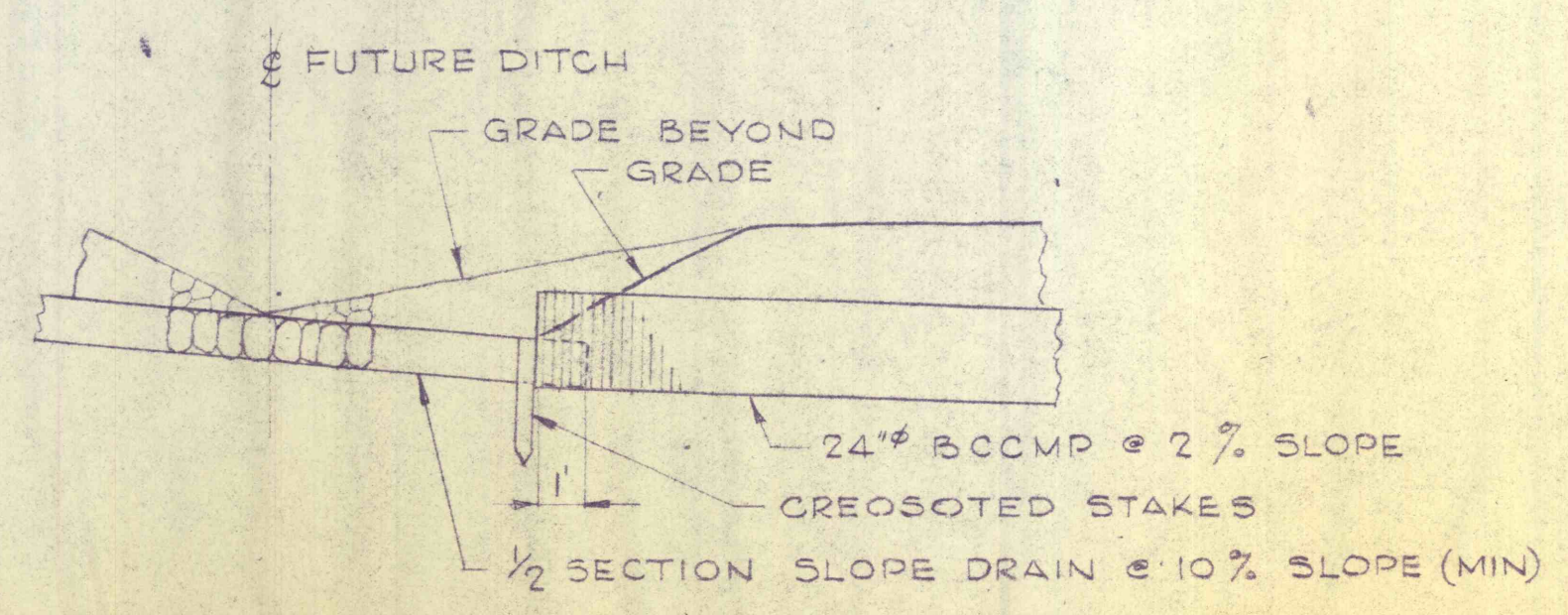
DETAIL "A"



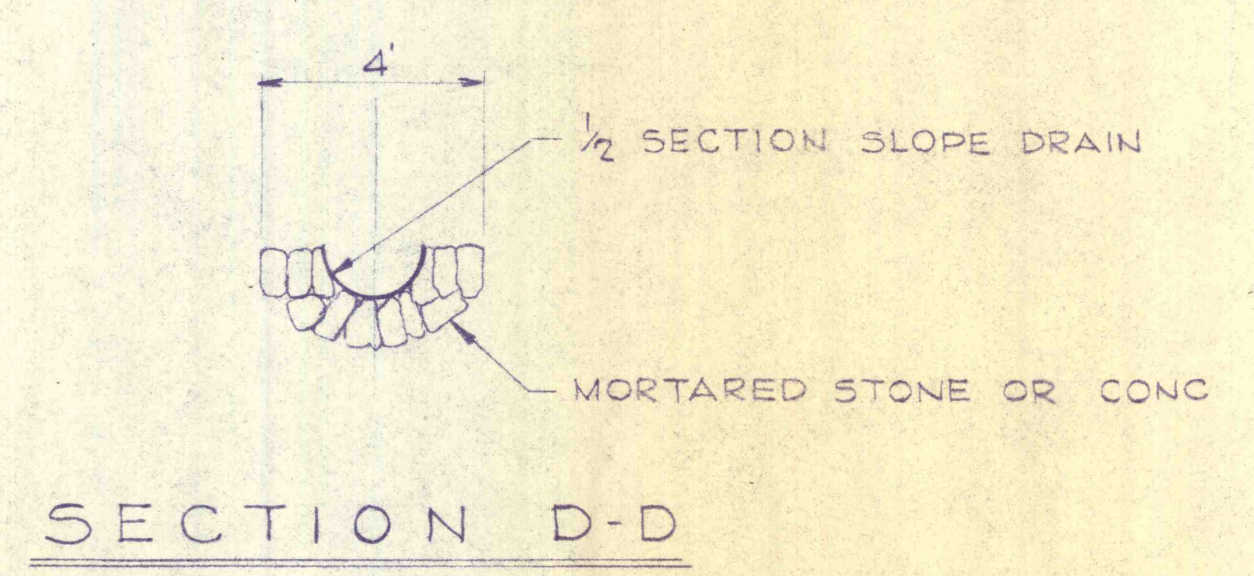
DETAIL "C"



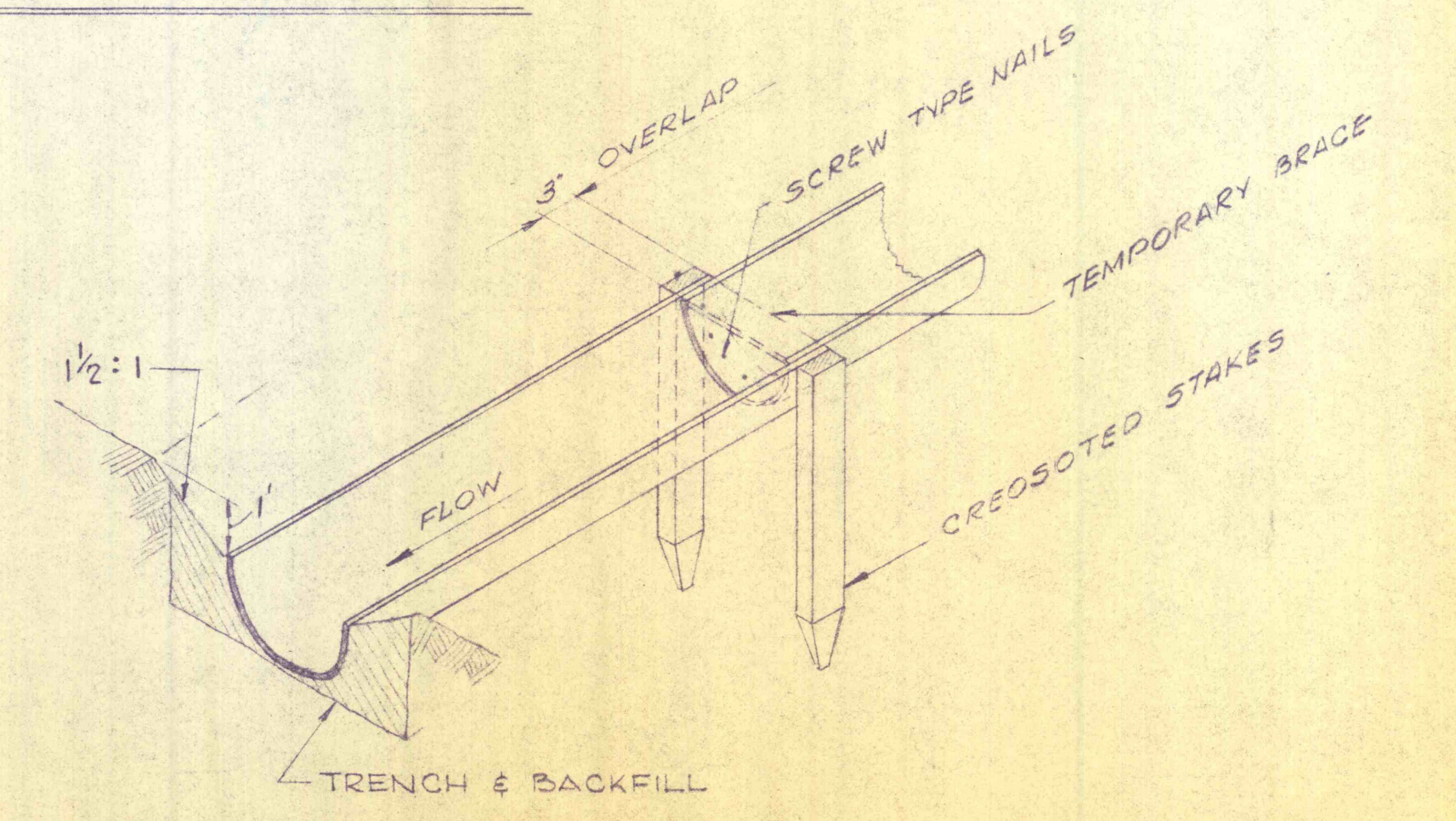
SECTION B-B



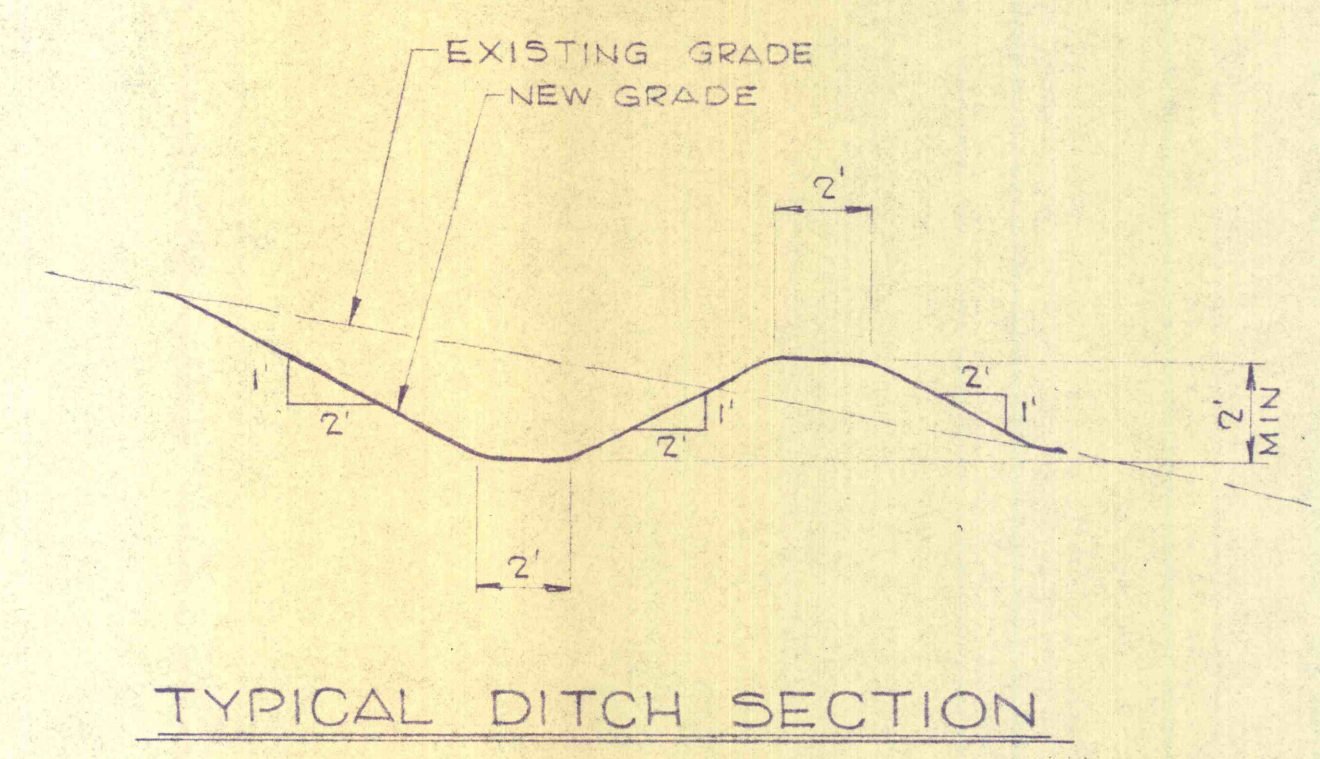
DETAIL "E"



SECTION D-D



INSTALLATION OF HALF SECTION BITUMINIZED FIBER DRAIN



TYPICAL DITCH SECTION

NO.	DATE	REVISION	APPR.
SUBMITTED			
PROFESSIONAL			
APPROVED			
CHIEF - DIVISION OF MINE REHABILITATION			
APPROVED			
DIRECTOR - BUREAU OF CONSULTING SERVICES			
COMMONWEALTH OF PENNSYLVANIA DEPARTMENT OF ENVIRONMENTAL RESOURCES OFFICE OF ENGINEERING AND CONSTRUCTION			
PROJECT NO. SL 170-1 STRIP MINE RECLAMATION QUICK START PROJECT "D" STATE GAME LAND NO. 264 WICONISCO CREEK WATERSHED DAUPHIN COUNTY, PENNA.			
<b>SANDERS AND THOMAS, INC.</b> CONSULTING ENGINEERS <small>EXECUTIVE OFFICES: POTTSTOWN, PENNSYLVANIA BRANCH OFFICES: PHILADELPHIA, PA. - LONG ISLAND, N.Y. - MIAMI, FLA. PITTSBURGH, PA. - BALTIMORE, MD. - LONG BEACH, CALIF. - WASHINGTON D.C.</small>			
<b>DRAINAGE DETAILS</b>			
DRAWN BY D.A.R.	DATE DEC 5, 1972	DRAWING NO. 7 OF 7	
CHECKED BY T.B.	SCALE AS NOTED		