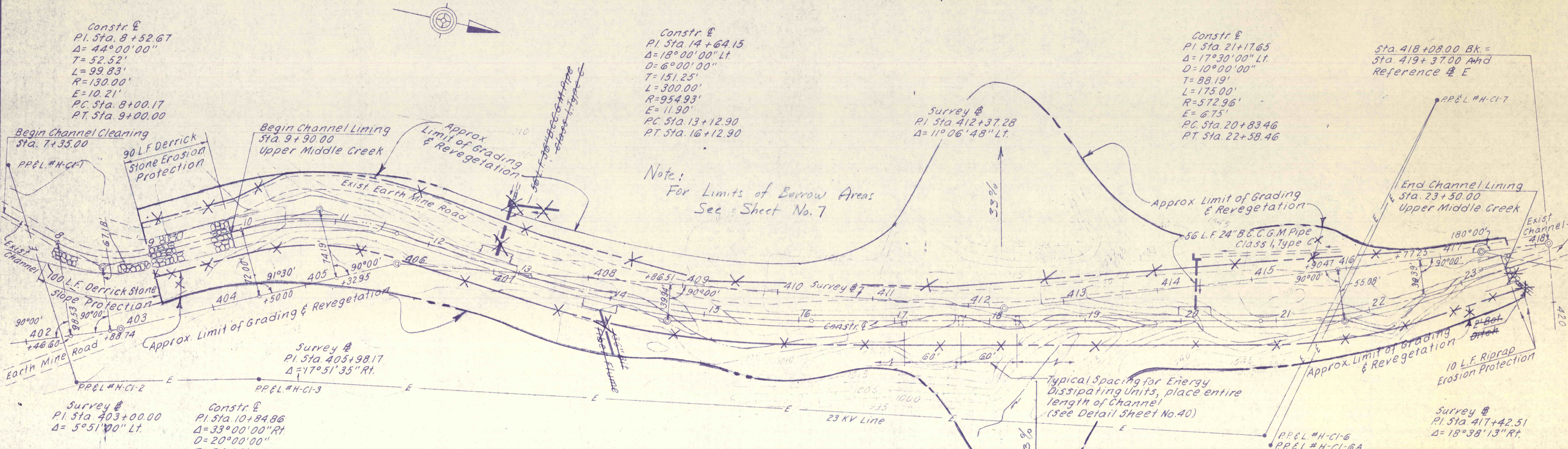


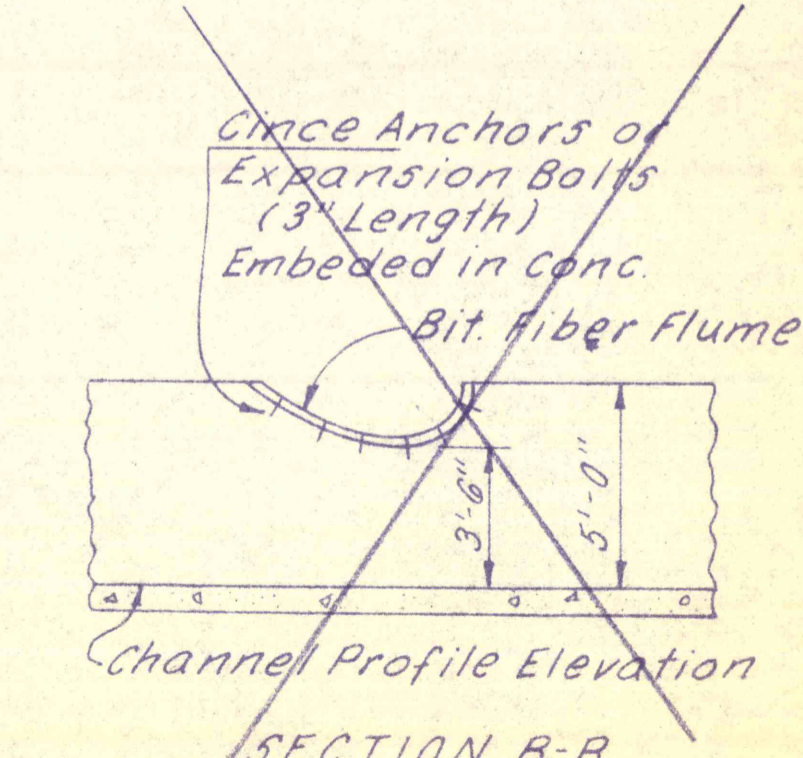
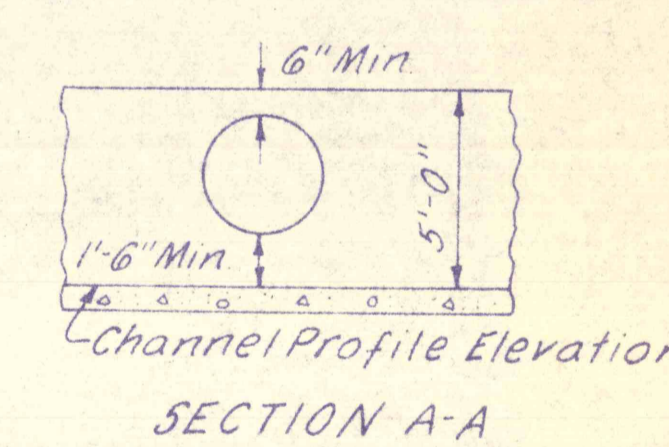
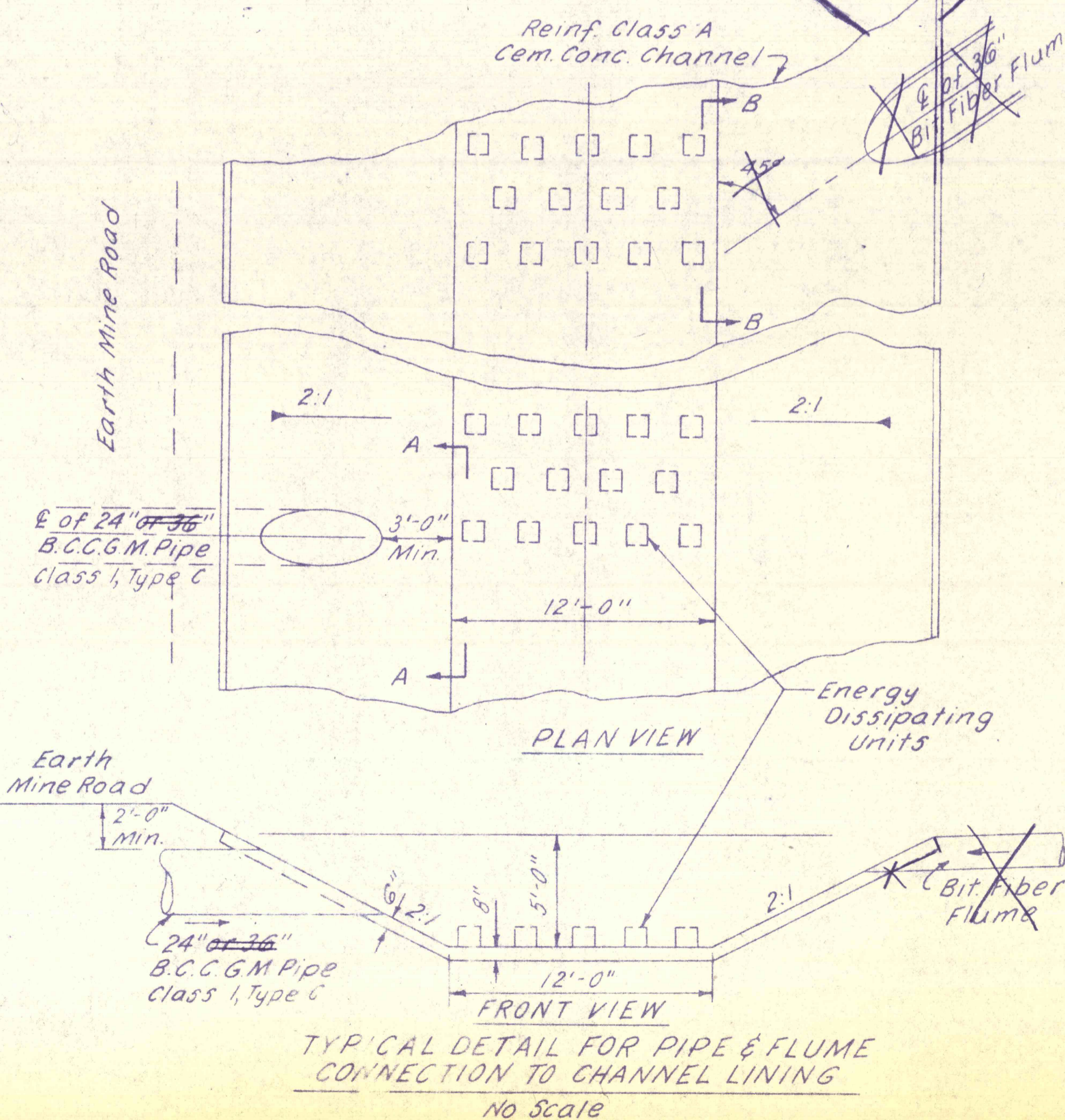
B.M.#7 Elev. 983.20
 72' East of Survey # Sta. 403+00
 Spike in Base of PP&L Pole #H-CI-2

For 1"=100' Plan See Sheet No. 7
 For Channel Profile See Sheet No. 21
 For Typical Sections See Sheet No. 40

B.M.#8 Elev. 1658.31
 17' NW of Survey # Sta. 417+42
 Spike in Base of 30" White Oak



Note:
 For Limits of Borrow Areas
 See Sheet No. 7



NO.	DATE	REVISION	APPR.
SUBMITTED			
<i>Norman E. Mutchler</i> PROFESSIONAL			
APPROVED			
<i>Albert A. Roman</i> CHIEF - DIVISION OF MINE DRAINAGE REHABILITATION			
APPROVED			
<i>Sturges</i> DIRECTOR - BUREAU OF CONSULTING SERVICES			
COMMONWEALTH OF PENNSYLVANIA DEPARTMENT OF ENVIRONMENTAL RESOURCES OFFICE OF ENGINEERING AND CONSTRUCTION			
PROJECT NO. SL-126-2-7 MINE DRAINAGE POLLUTION ABATEMENT SWATARA CREEK WATERSHED SCHUYLKILL COUNTY			
BERGER ASSOCIATES, INC. Consulting Engineers P.O. Box 1943 Harrisburg, Penna.			
UPPER MIDDLE CREEK CHANNEL LINING			
DRAWN BY	DATE	DRAWING NO.	17 of 43
W. G.	APR. 17, 1973		
CHECKED BY	SCALE		
M. W.	1" = 50'		

Rev 7/15/73