

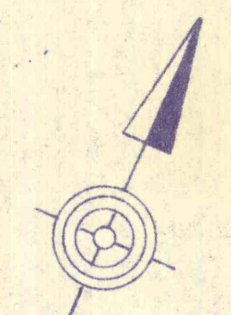
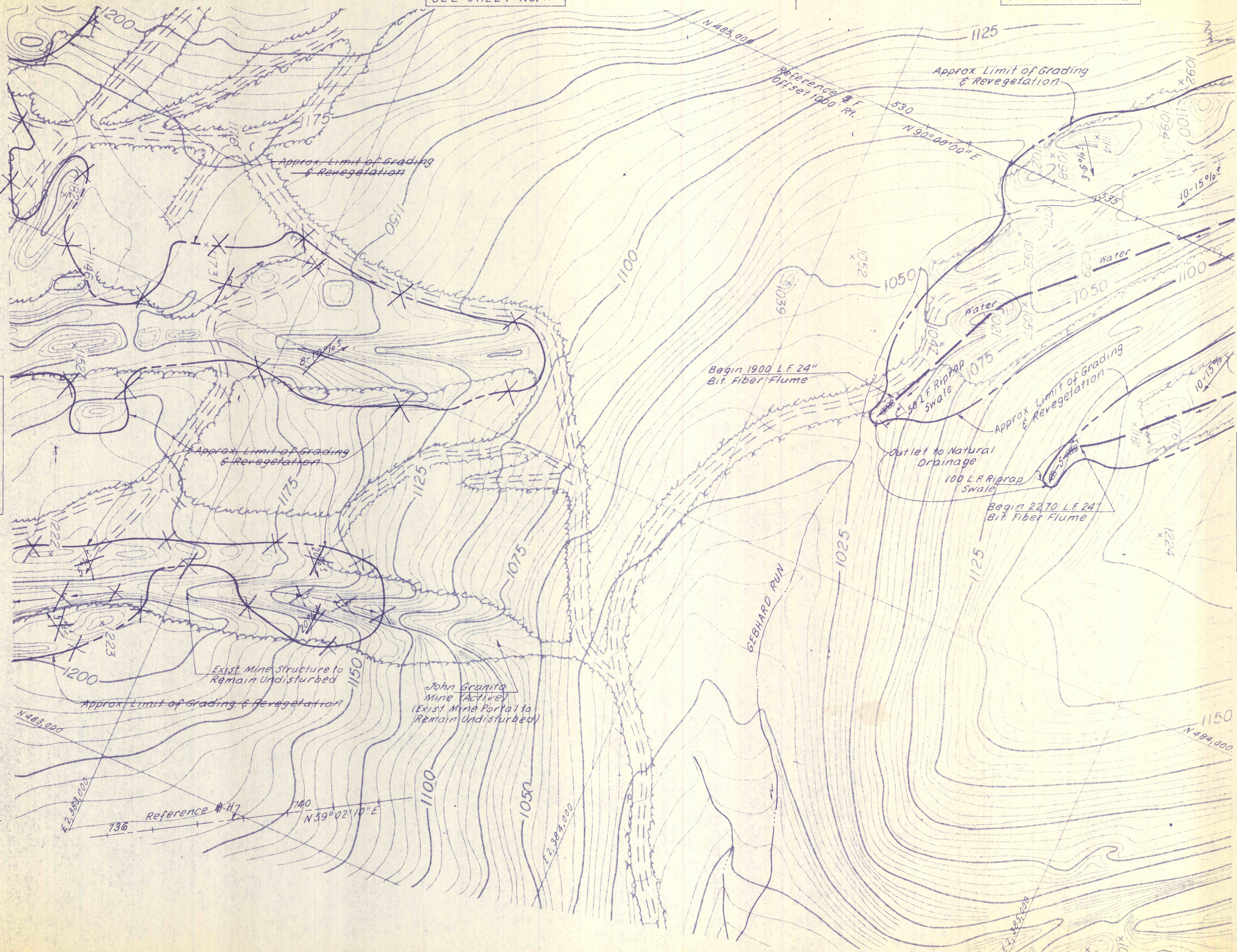
SEE SHEET NO. 11

SEE SHEET NO. 12

SEE SHEET NO. 7

SEE SHEET NO. 10

SEE SHEET NO. 14



For Grading Sections  
See Sheet No. 32 & 38

NO	DATE	REVISION	APPR.

SUBMITTED Norman E. Mitchell  
PROFESSIONAL

APPROVED Albert G. Pomeroy  
CHIEF - DIVISION OF MINE DRAINAGE REHABILITATION

APPROVED John P. ...  
DIRECTOR - BUREAU OF CONSULTING SERVICES

COMMONWEALTH OF PENNSYLVANIA  
DEPARTMENT OF ENVIRONMENTAL RESOURCES  
OFFICE OF ENGINEERING AND CONSTRUCTION

PROJECT NO. SL-126-2-7

MINE DRAINAGE  
POLLUTION ABATEMENT  
SWATARA CREEK WATERSHED  
SCHUYLKILL COUNTY

BERGER ASSOCIATES, INC.  
Consulting Engineers

P.O. Box 1943 Harrisburg, Penna.

**PLAN**  
**STRIP MINE RECLAMATION**

DRAWN BY W.G.	DATE APR 17, 1973	DRAWING NO. 9 of 43
CHECKED BY T.T.	SCALE 1" = 100'	

Rev. 7/15/74