

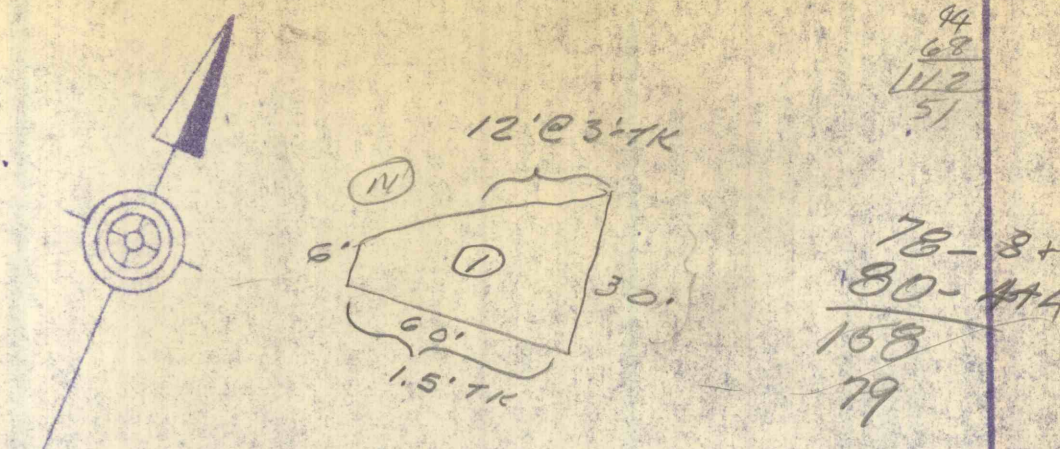
SEE SHEET NO. 6

SEE SHEET NO. 8

SEE SHEET NO. 11

SEE SHEET NO. 13

SEE SHEET NO. 14



For Plan of Upper Middle Creek Channel Lining see Sheet No. 17

For Grading Sections See Sheet Nos 30, 31 & 32

SEE SHEET NO. 9

NO	DATE	REVISION	APPR

SUBMITTED
 APPROVED
 APPROVED



COMMONWEALTH OF PENNSYLVANIA
 DEPARTMENT OF ENVIRONMENTAL RESOURCES
 OFFICE OF ENGINEERING AND CONSTRUCTION

PROJECT NO. SL-126-2-7

MINE DRAINAGE
 POLLUTION ABATEMENT
 SWATARA CREEK WATERSHED
 SCHUYLKILL COUNTY

BERGER ASSOCIATES, INC.
 Consulting Engineers

P.O. Box 1943 Harrisburg, Penna.

PLAN
 STRIP MINE RECLAMATION

DRAWN BY W.G.	DATE APR 17, 1973	DRAWING NO. 7 of 43
CHECKED BY M.W.	SCALE 1" = 100'	

Rev. 7/15/74