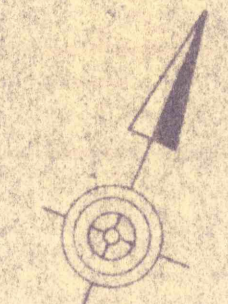


SEE SHEET NO. 12

Approx. Limit of Grading & Revegetation



Stationing for Existing Flume
Baseline is according to
Survey completed by
Department of Environmental
Resources survey Party

Bench Mark - Elev. 100.0
Existing Flume Invert
Station 0+00

For Grading Sections
See Sheets No. 32

NO.	DATE	REVISION	APPR.
SUBMITTED			
APPROVED			
APPROVED			



COMMONWEALTH OF PENNSYLVANIA
DEPARTMENT OF ENVIRONMENTAL RESOURCES
OFFICE OF ENGINEERING AND CONSTRUCTION

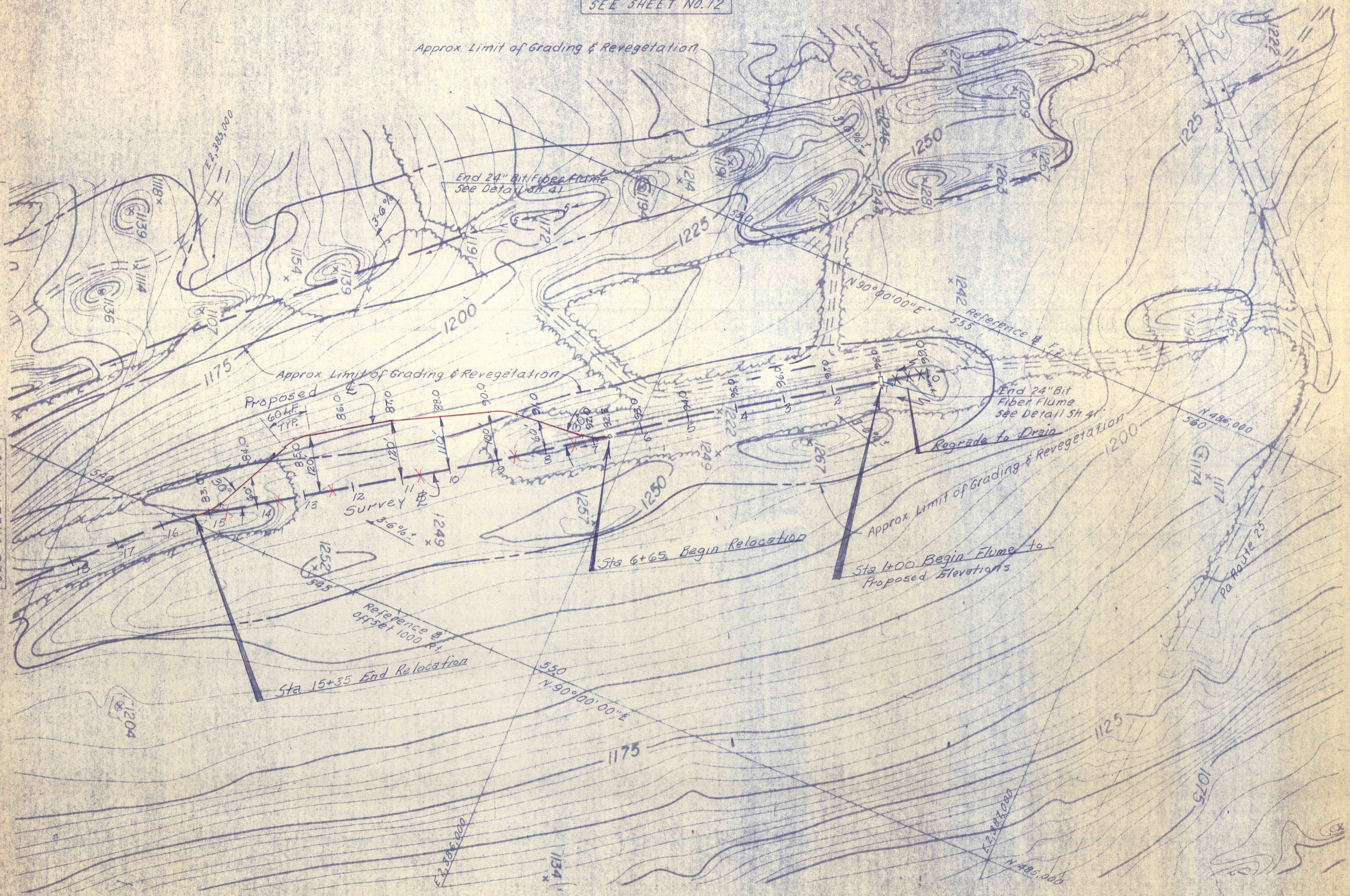
PROJECT NO. SL-126-2-7

MINE DRAINAGE
POLLUTION ABATEMENT
SWATARA CREEK WATERSHED
SCHUYLKILL COUNTY

BERGER ASSOCIATES, INC.
Consulting Engineers
P.O. Box 1943 Harrisburg, Penna.

PLAN STRIP MINE RECLAMATION

DRAWN BY W.G.	DATE APR 17, 1973	DRAWING NO. 10 of 43
CHECKED BY T.T.	SCALE 1" = 100'	



SEE SHEET NO. 9