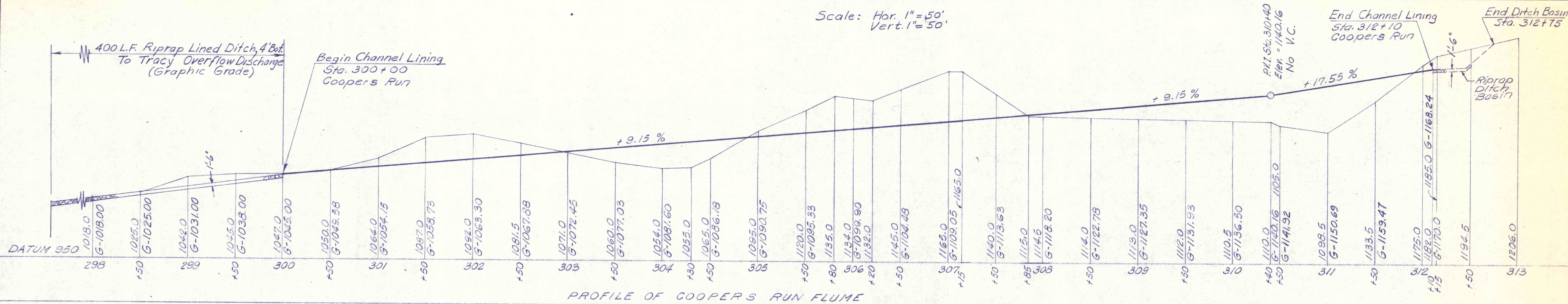
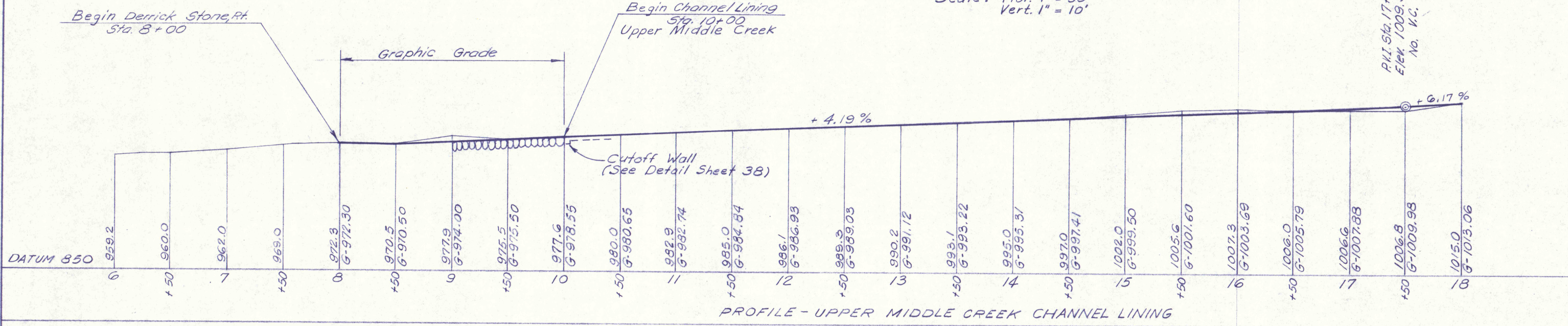


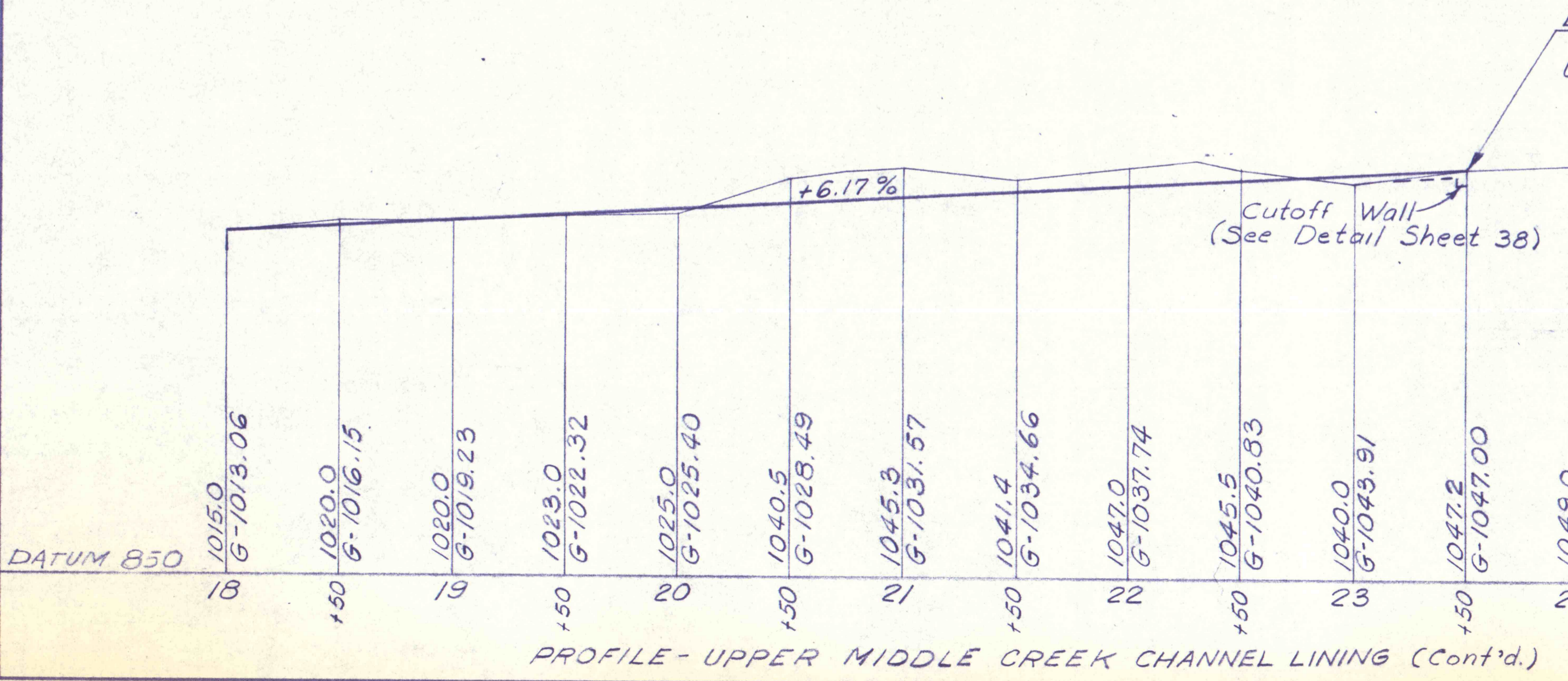
Scale: Hor. 1" = 50'  
Vert. 1" = 50'



Scale: Hor. 1" = 50'  
Vert. 1" = 10'



End Channel Lining Sta. 23+50 Upper Middle Creek



NO.	DATE	REVISION	APPR.
SUBMITTED			
APPROVED			
CHIEF - DIVISION OF MINE DRAINAGE REHABILITATION			
APPROVED			
DIRECTOR - BUREAU OF CONSULTING SERVICES			
COMMONWEALTH OF PENNSYLVANIA DEPARTMENT OF ENVIRONMENTAL RESOURCES OFFICE OF ENGINEERING AND CONSTRUCTION			
PROJECT NO. SL-126-2-7			
MINE DRAINAGE POLLUTION ABATEMENT SWATARA CREEK WATERSHED SCHUYLKILL COUNTY			
BERGER ASSOCIATES, INC. Consulting Engineers			
P.O. Box 1943 Harrisburg, Penna.			
PROFILES COOPERS RUN FLUME AND UPPER MIDDLE CREEK CHANNEL LINING			
DRAWN BY	DATE	DRAWING NO.	
J. S.	Mar. 13, 1973		
CHECKED BY	SCALE	20 of 40	
M. W.	As Shown		