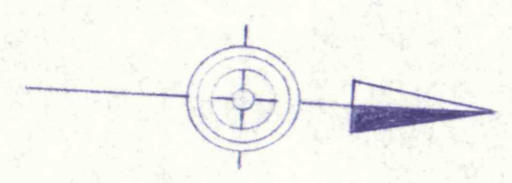


Bench Mark Elev. 983.20
72' East of Survey # Sta. 403+00
Spike in Base of P.R. & L. Pole # HC 1-2

Constr. &
P.I. Sta. 21+71.65
 $\Delta = 17^{\circ}30'00"$ Lt.
D = 10'00"00"
T = 88.31'
L = 175.00'
R = 572.96'

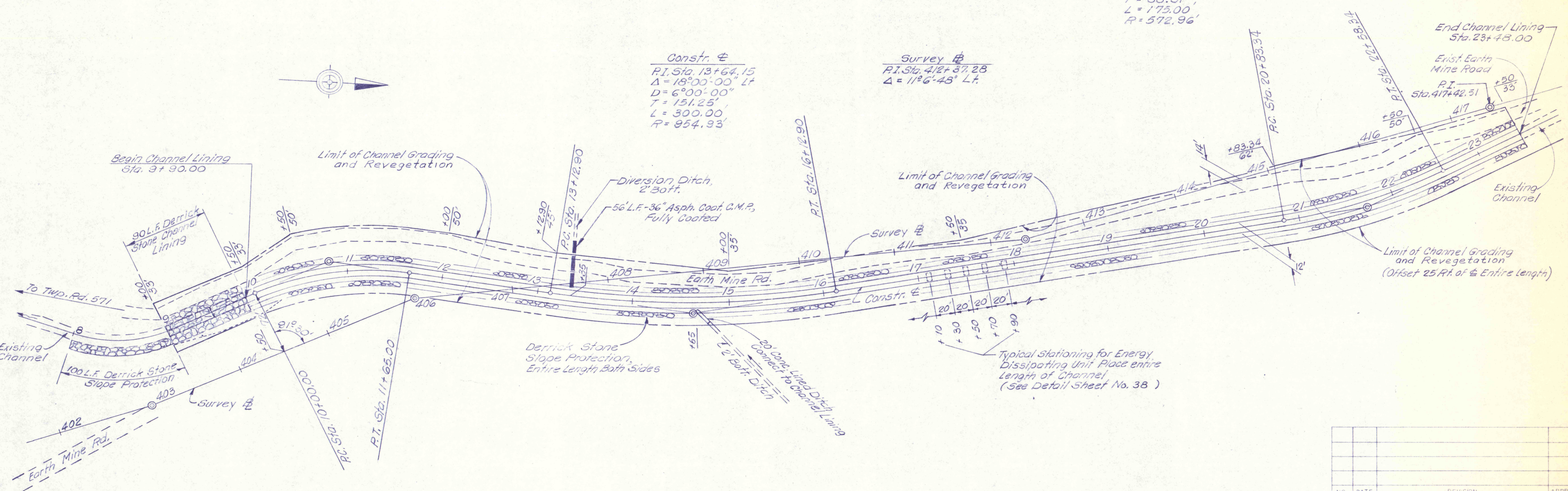
Bench Mark Elev. 1058.31
17' NW of Survey # Sta. 417+41.51
Spike in Base of 30" White Oak.

To Reference
"E"



Constr. &
P.I. Sta. 13+64.15
 $\Delta = 18^{\circ}00'00"$ Lt.
D = 6'00"00"
T = 151.25'
L = 300.00'
R = 954.93'

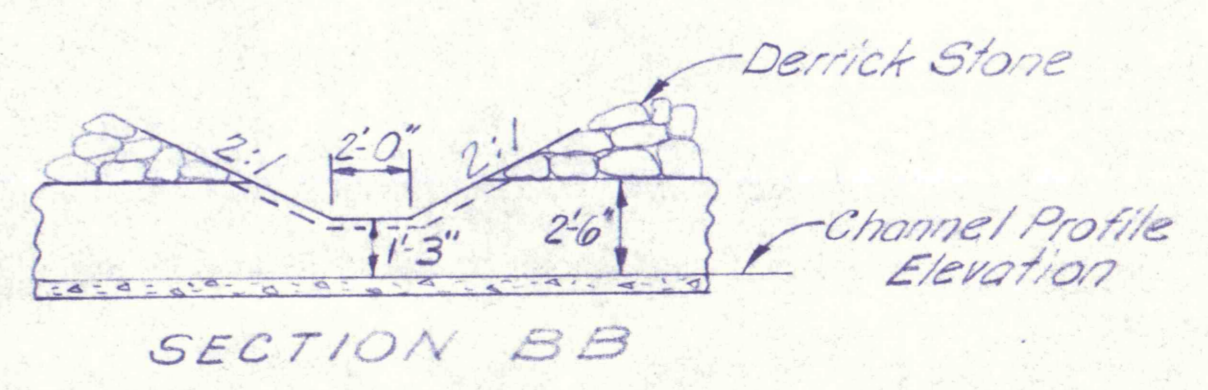
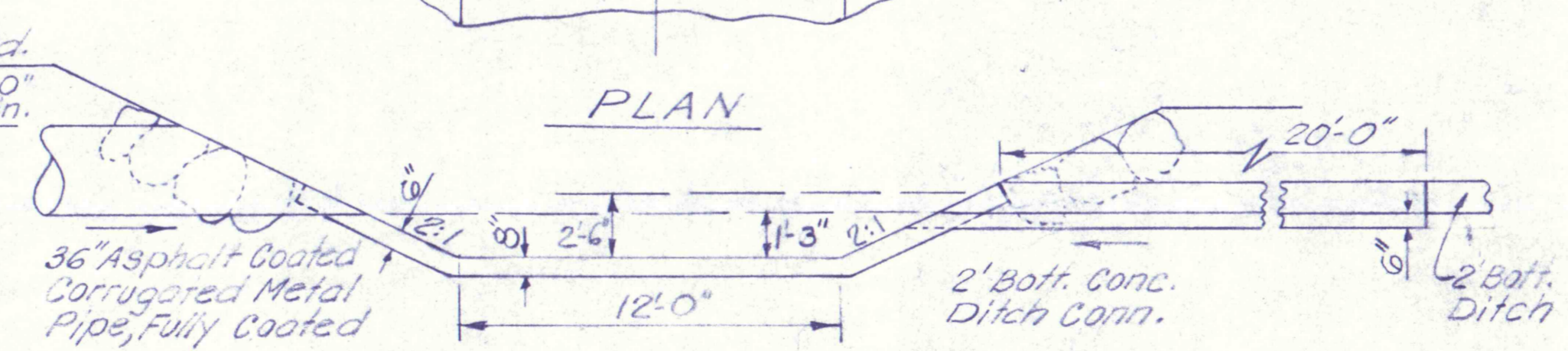
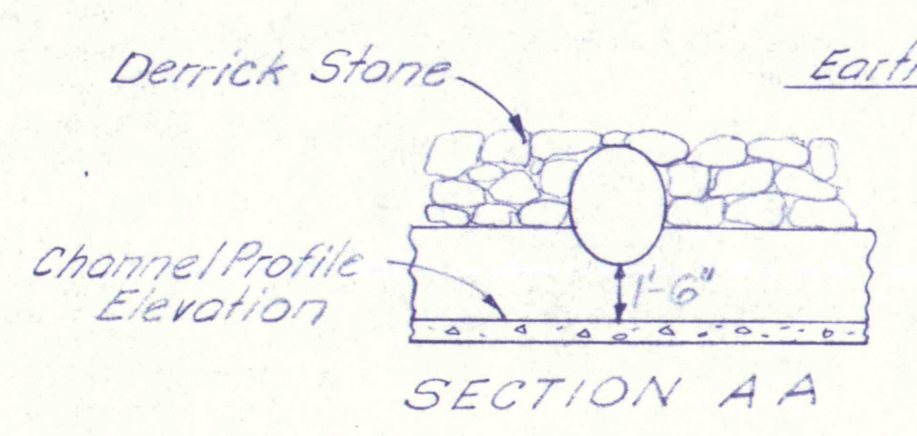
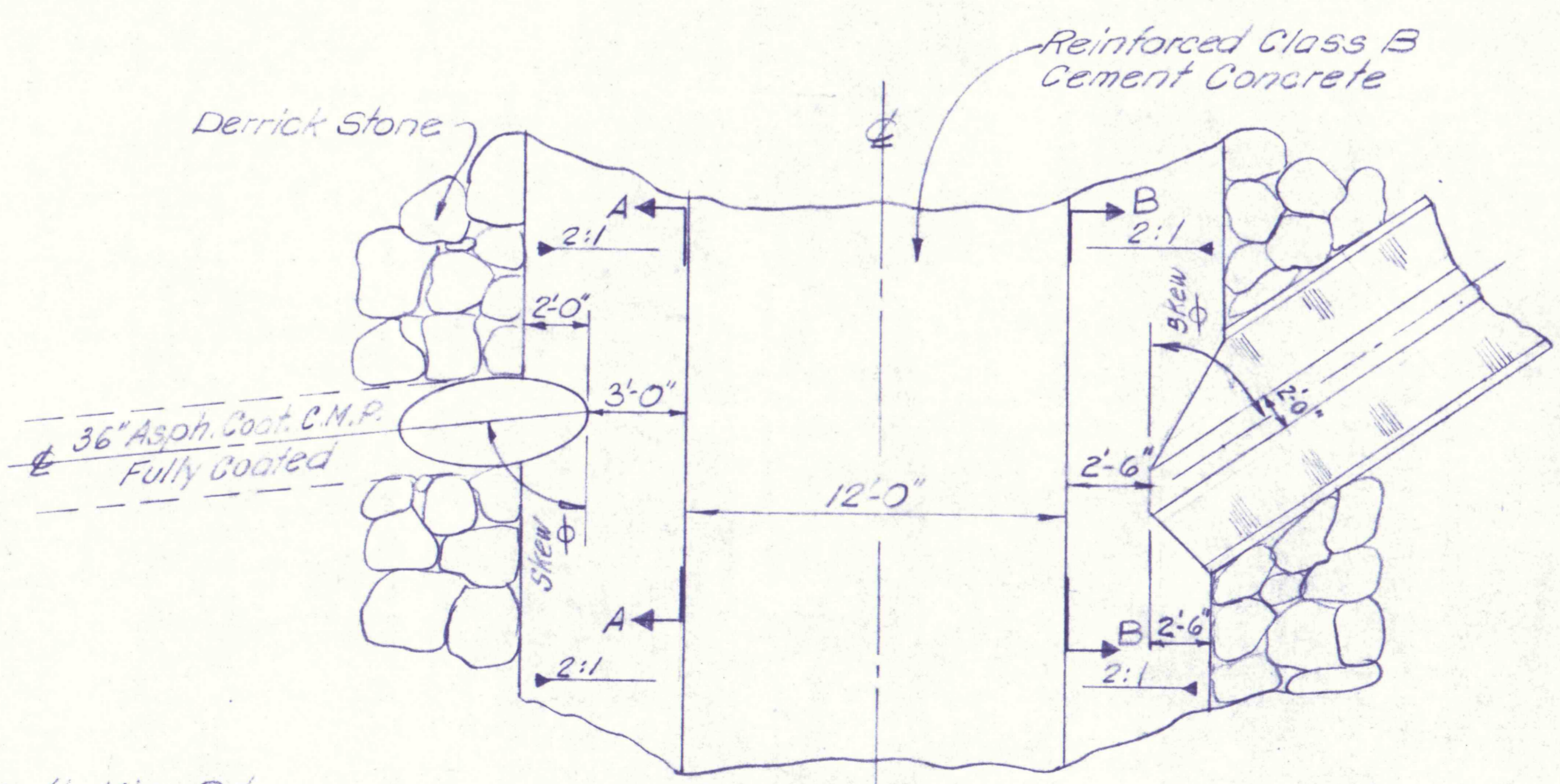
Survey #
P.I. Sta. 412+37.28
 $\Delta = 11^{\circ}6'48"$ Lt.



Survey #
P.I. Sta. 403+00
 $\Delta = 5^{\circ}51'00"$ Lt.

Survey #
P.I. Sta. 405+98.17
 $\Delta = 17^{\circ}51'35"$ Rt.

Constr. &
P.I. Sta. 10+84.86
 $\Delta = 33^{\circ}00'00"$ Rt.
D = 20'00"00"
T = 84.86'
L = 165.0'
R = 286.48'



| NO. | DATE | REVISION | APPR. |
|---|-----------------------|-------------------------|-------|
| | | | |
| SUBMITTED | | | |
| APPROVED _____ | | | |
| PROFESSIONAL | | | |
| CHIEF, DIVISION OF MINE DRAINAGE RENOVATION | | | |
| APPROVED _____ | | | |
| DIRECTOR - BUREAU OF CONSULTING SERVICES | | | |
| | | | |
| COMMONWEALTH OF PENNSYLVANIA | | | |
| DEPARTMENT OF ENVIRONMENTAL RESOURCES | | | |
| OFFICE OF ENGINEERING AND CONSTRUCTION | | | |
| PROJECT NO. SL-126-2-7 | | | |
| MINE DRAINAGE | | | |
| POLLUTION ABATEMENT | | | |
| SWATARA CREEK WATERSHED | | | |
| SCHUYLKILL COUNTY | | | |
| BERGER ASSOCIATES, INC. | | | |
| Consulting Engineers | | | |
| P.O. Box 1943 Harrisburg, Penna. | | | |
| UPPER MIDDLE CREEK | | | |
| CHANNEL LINING | | | |
| DRAWN BY J. S. | DATE Mar. 19, 1973 | DRAWING NO. 16 of 40 | |
| CHECKED BY M. W. | SCALE 1" = 50' | | |