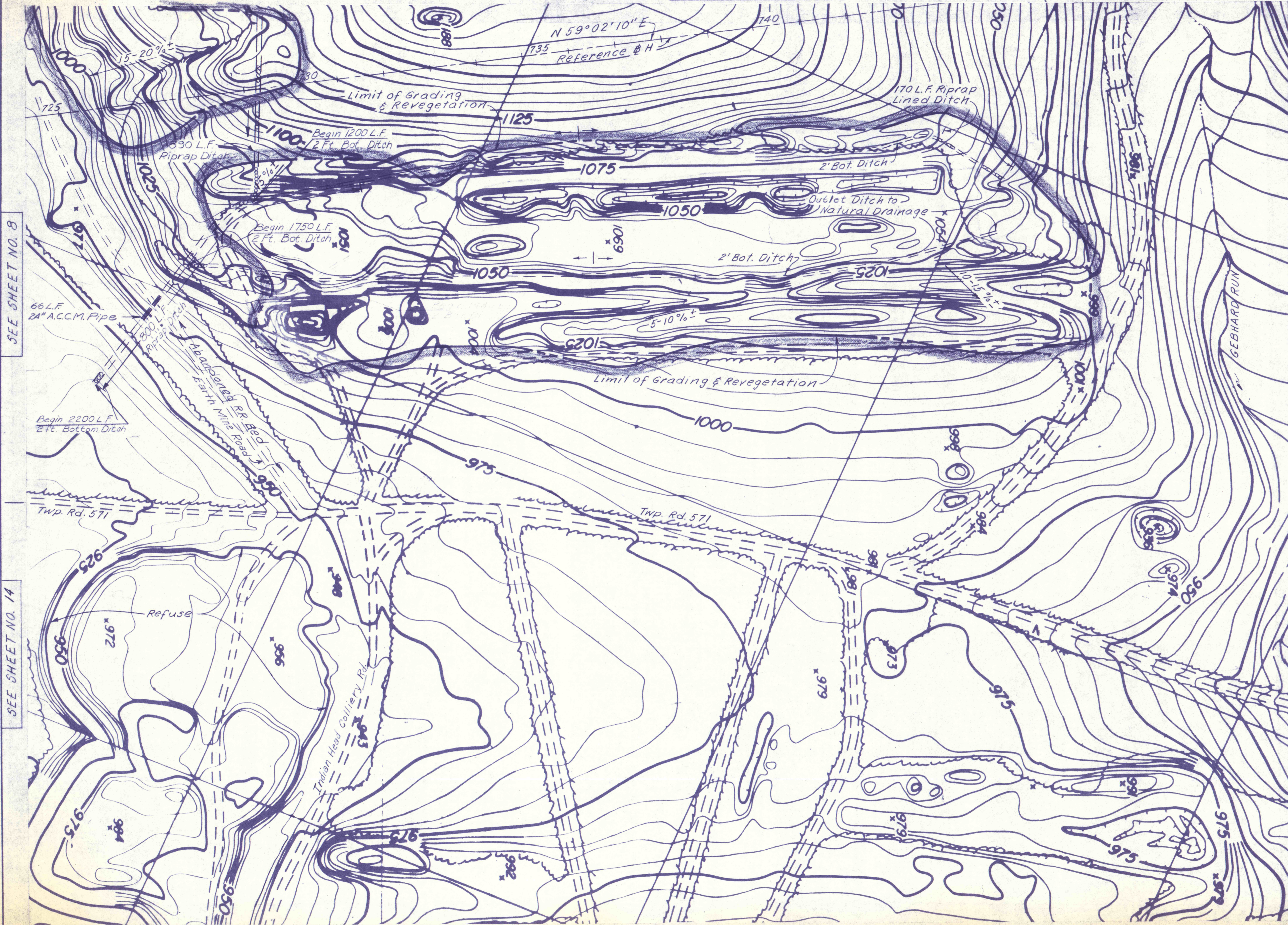
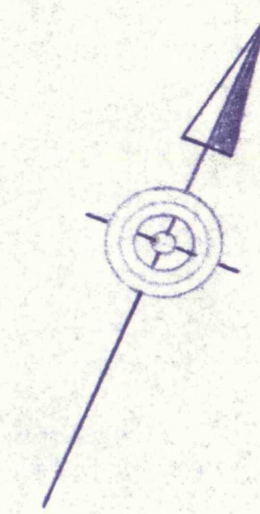


SEE SHEET NO. 9



SEE SHEET NO. 8

SEE SHEET NO. 14

NO	DATE	REVISION	APPR
SUBMITTED			
PROFESSIONAL			
APPROVED			
CHIEF - DIVISION OF MINE REHABILITATION			
APPROVED			
DIRECTOR - BUREAU OF CONSULTING SERVICES			
COMMONWEALTH OF PENNSYLVANIA DEPARTMENT OF ENVIRONMENTAL RESOURCES OFFICE OF ENGINEERING AND CONSTRUCTION			
PROJECT NO. SL-126-2-7			
MINE DRAINAGE POLLUTION ABATEMENT SWATARA CREEK WATERSHED SCHUYLKILL COUNTY			
BERGER ASSOCIATES, INC. Consulting Engineers			
P.O. Box 1943 Harrisburg, Penna.			
PLAN STRIP MINE RECLAMATION			
DRAWN BY	DATE	DRAWING NO.	
M.G.	Mar. 19, 1973	13 of 40	
CHECKED BY	SCALE		
M.W.	1" = 100'		