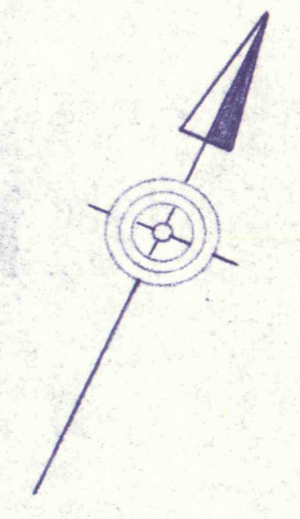
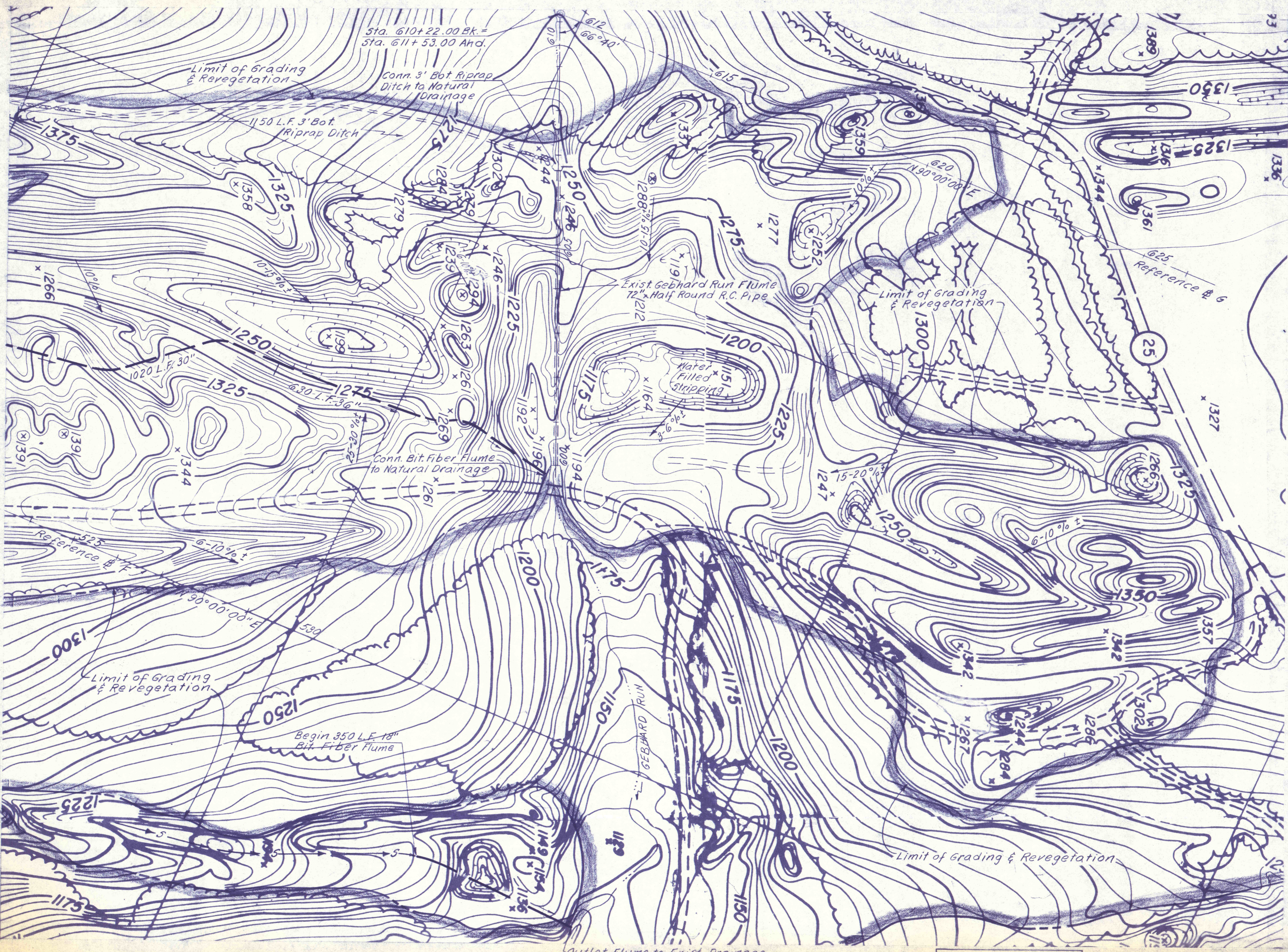


SEE SHEET NO. 11



NO	DATE	REVISION	APPR

PROFESSIONAL
APPROVED
CHIEF - DIVISION OF MINE REHABILITATION
APPROVED
DIRECTOR - BUREAU OF CONSULTING SERVICES

COMMONWEALTH OF PENNSYLVANIA
DEPARTMENT OF ENVIRONMENTAL RESOURCES
OFFICE OF ENGINEERING AND CONSTRUCTION

PROJECT NO. SL-126-2-7

MINE DRAINAGE
POLLUTION ABATEMENT
SWATARA CREEK WATERSHED
SCHUYLKILL COUNTY

BERGER ASSOCIATES, INC.
Consulting Engineers

P.O. Box 1943 Harrisburg, Penna.

PLAN
STRIP MINE RECLAMATION

DRAWN BY: W.G.
DATE: Mar 19, 1973
CHECKED BY: M.W.
SCALE: 1" = 100'

DRAWING NO: 12 of 40