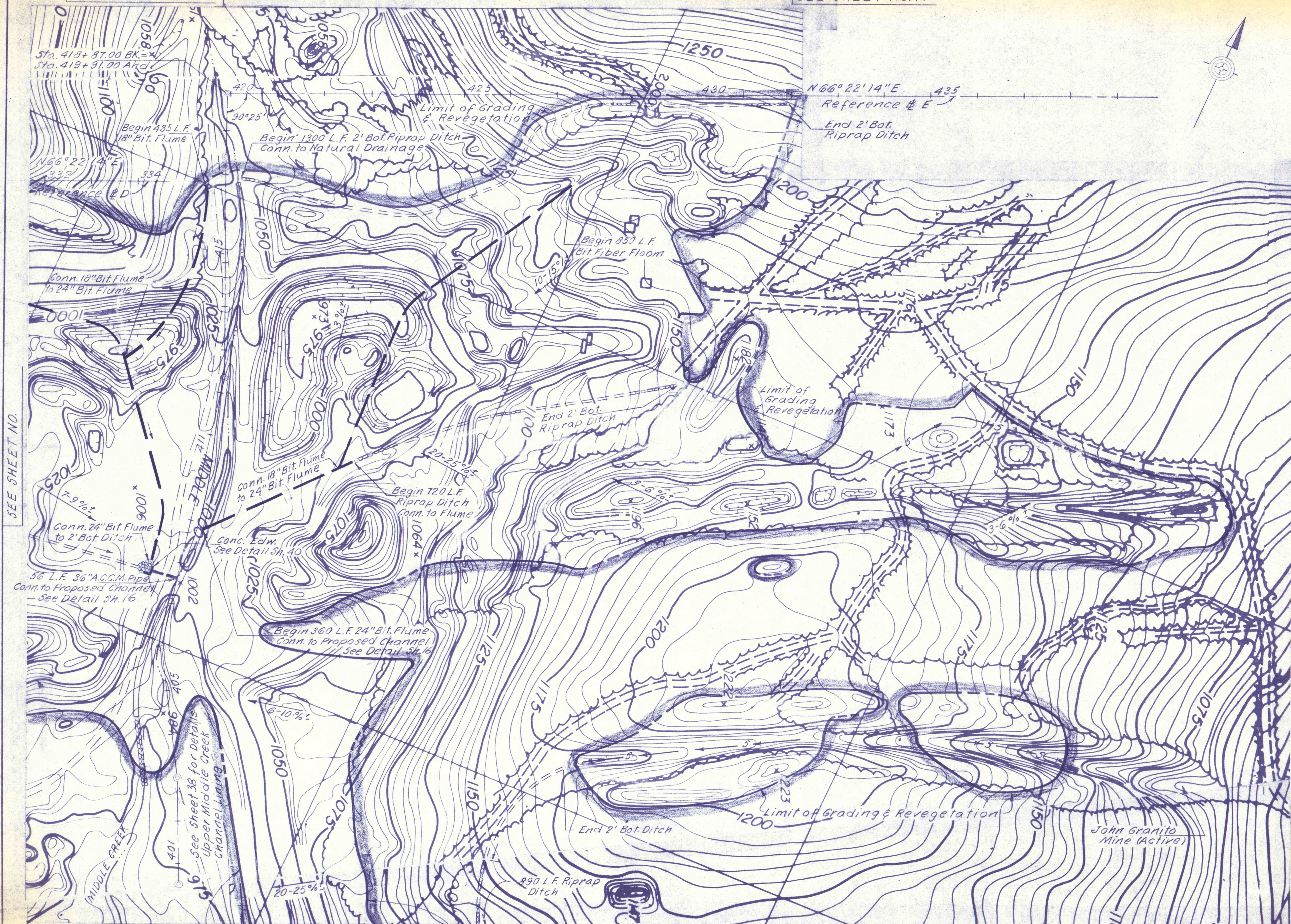


SEE SHEET NO. 8

SEE SHEET NO. 11



SEE SHEET NO.

SEE SHEET NO. 10

SEE SHEET NO. 13

NO.	DATE	REVISION	APPR.

SUBMITTED \_\_\_\_\_

PROFESSIONAL \_\_\_\_\_

APPROVED \_\_\_\_\_

CHIEF - DIVISION OF MINE REHABILITATION

APPROVED \_\_\_\_\_

DIRECTOR - BUREAU OF CONSULTING SERVICES

COMMONWEALTH OF PENNSYLVANIA  
 DEPARTMENT OF ENVIRONMENTAL RESOURCES  
 OFFICE OF ENGINEERING AND CONSTRUCTION

PROJECT NO. SL-126-2-7

MINE DRAINAGE  
 POLLUTION ABATEMENT  
 SWATARA CREEK WATERSHED  
 SCHUYLKILL COUNTY

BERGER ASSOCIATES, INC.  
 Consulting Engineers

P.O. Box 1943 Harrisburg, Penna.

PLAN  
 STRIP MINE RECLAMATION

DRAWN BY W.G.	DATE Mar 19, 1973	DRAWING NO.
CHECKED BY M.W.	SCALE 1" = 100'	9 of 40