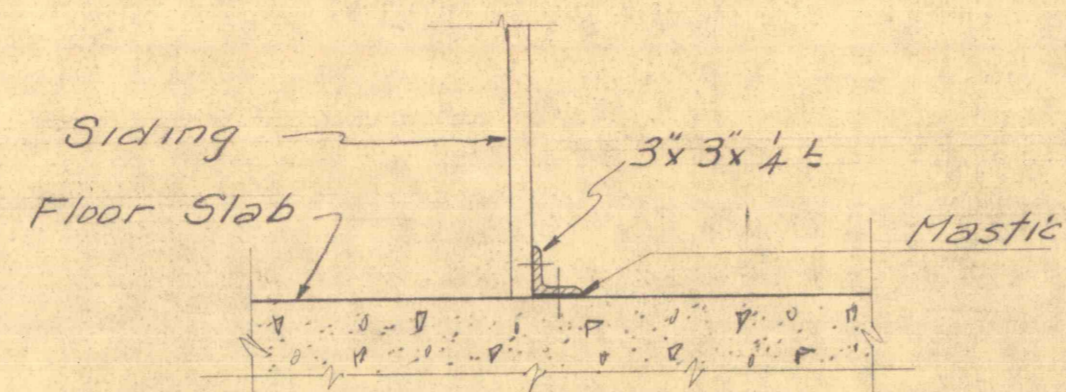
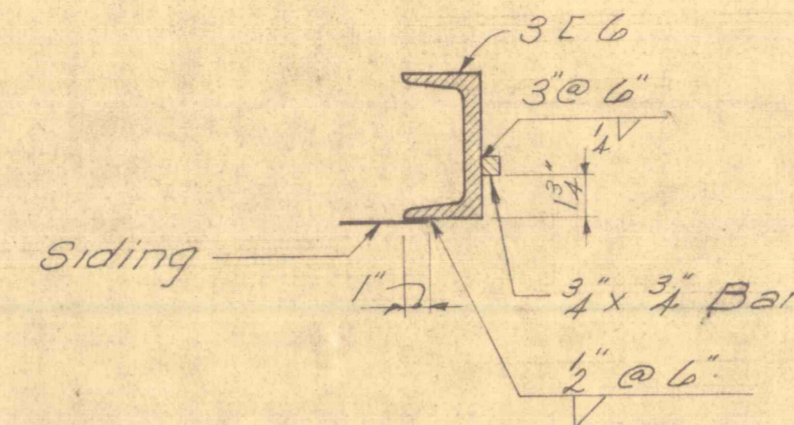


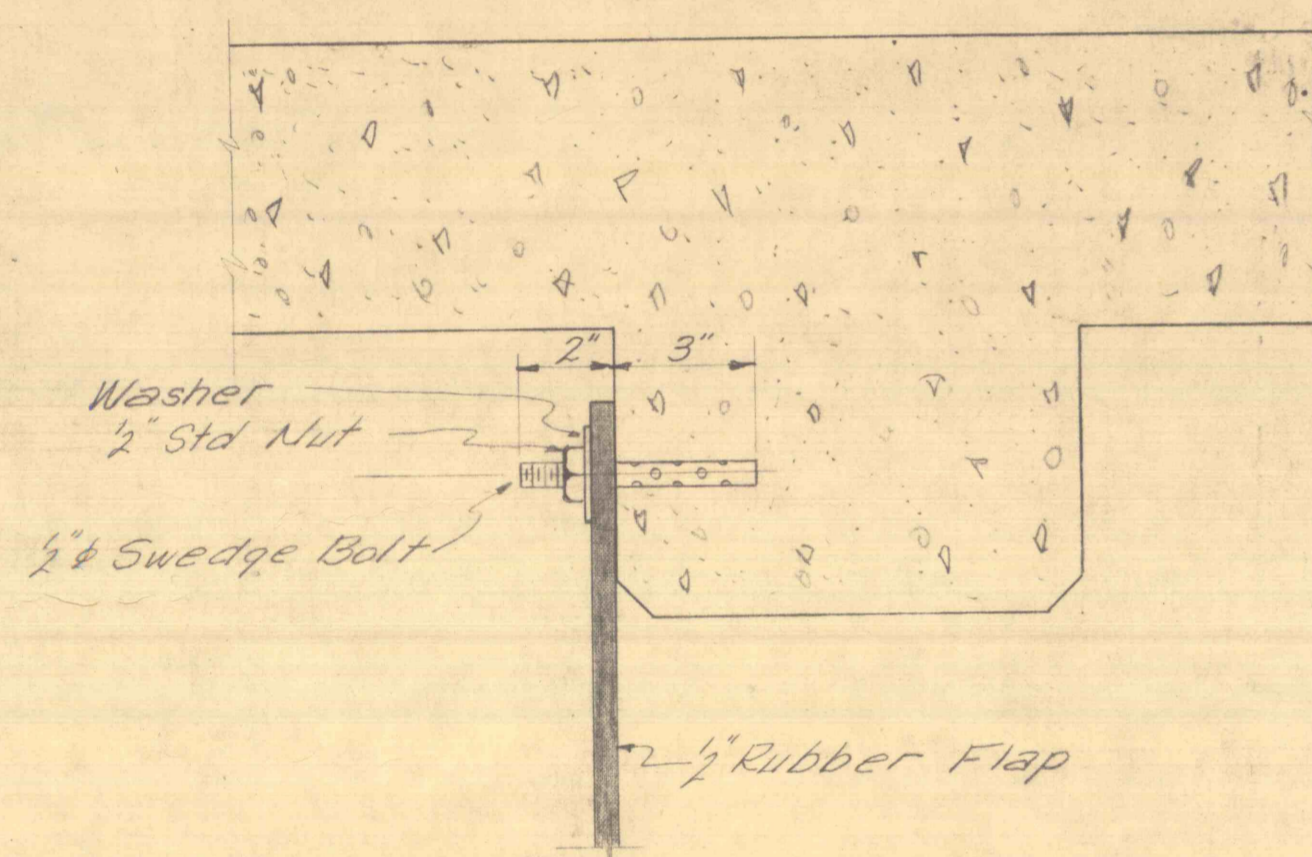
DETAIL OF RUBBER FLAP AT EACH END OF SLAB  
For Sandy Run & Swamp Creek Only  
Scale: 1/2"=1'-0"



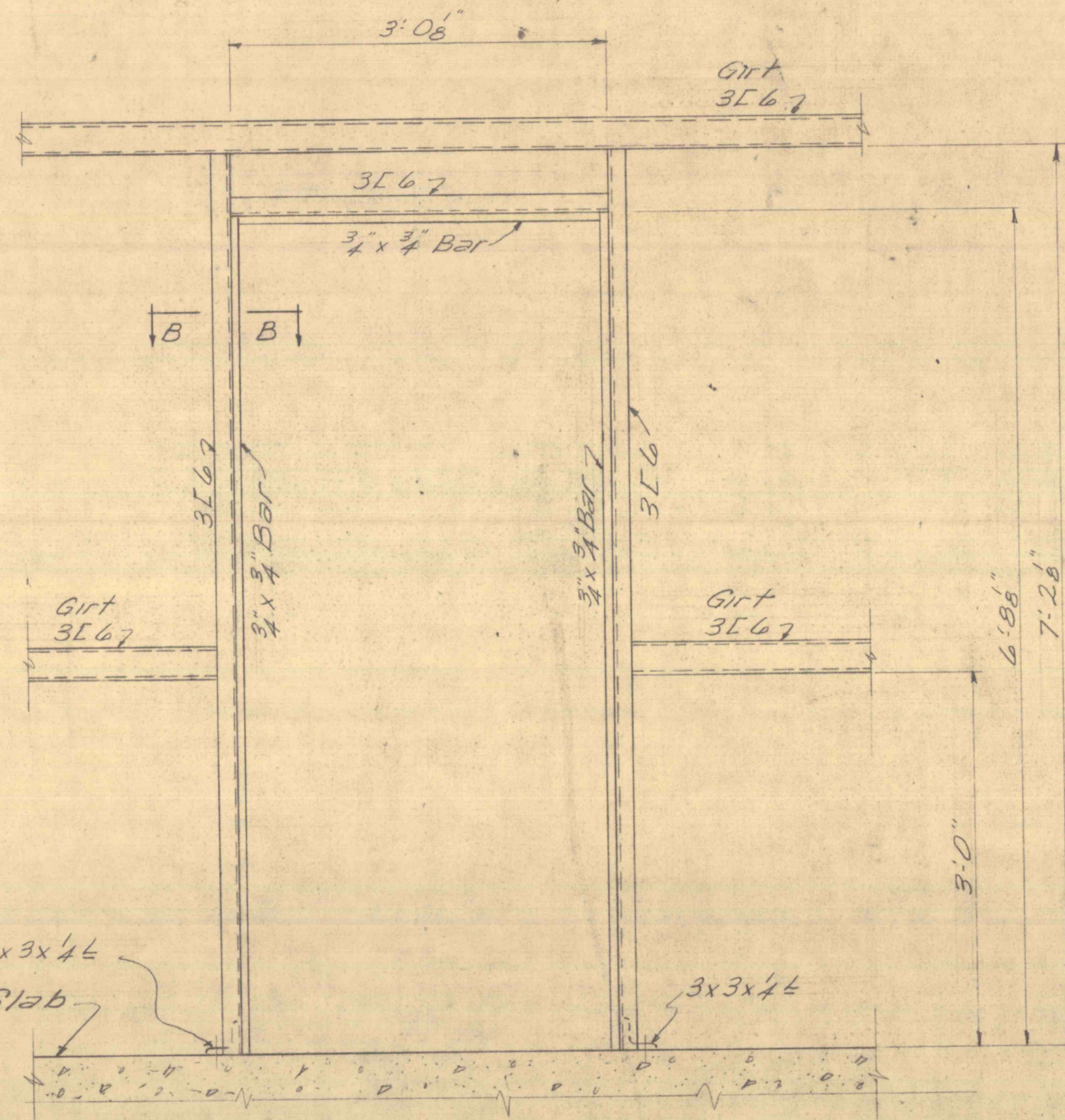
DETAIL OF SIDING AT FLOOR SLAB  
Scale 1"=1'-0"



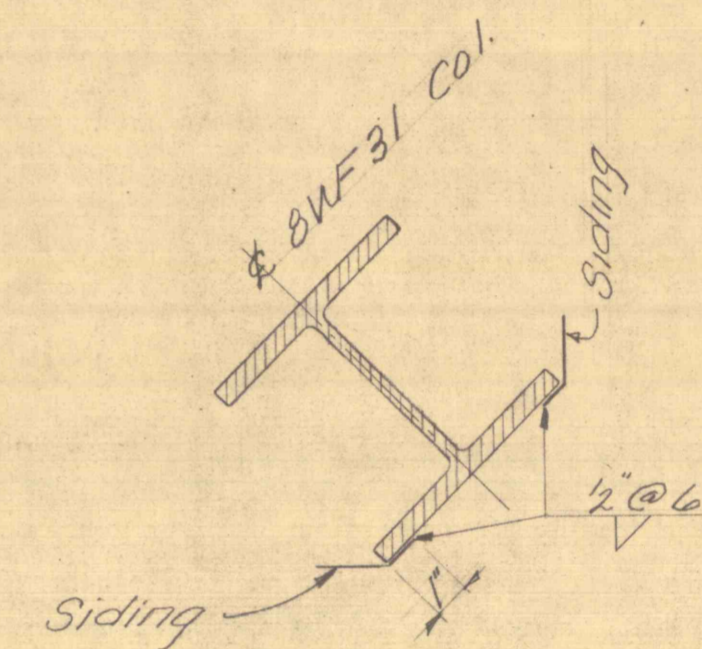
SECTION "B-B"  
Scale 3"=1'-0"



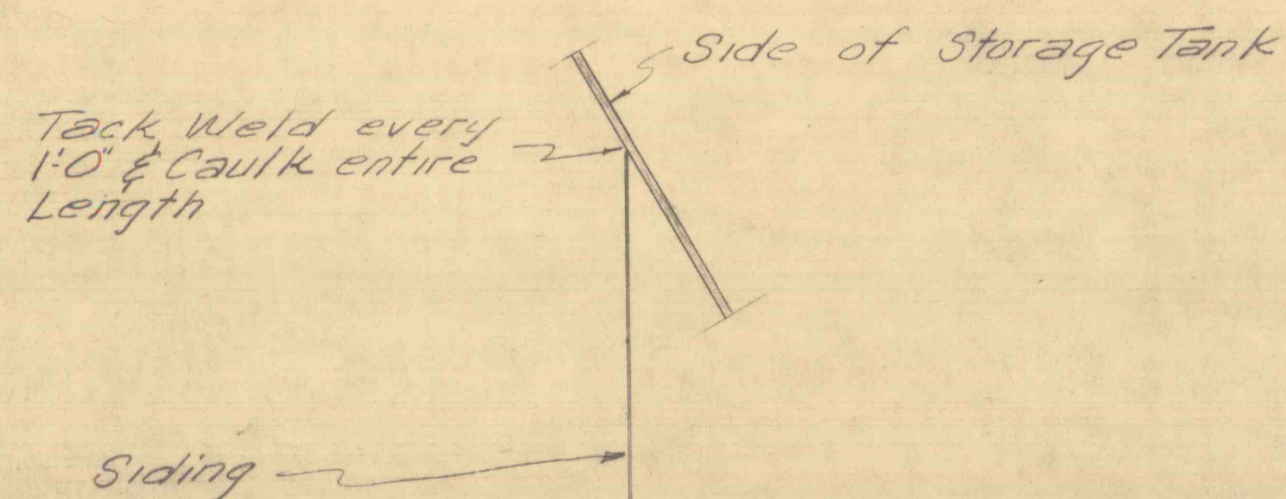
SECTION "A-A"  
Scale 3"=1'-0"



DOOR BUCK  
Scale: 1/2"=1'-0"



DETAIL OF SIDING AT COL.  
No Scale



DETAIL OF SIDING AT STORAGE TANK  
Scale 3"=1'-0"

REVISIONS	

APPROVALS	
APPROVED	<i>[Signature]</i>
DIRECTOR-BUREAU OF ENGINEERING & CONSTRUCTION	
APPROVED	<i>[Signature]</i>
ENGINEER-BUREAU OF ENGINEERING & CONSTRUCTION	
SUPERVISING	<i>[Signature]</i>
FOR DEPT. OF MINES & MINERALS SEC'S.	
SUBMITTED BY	<i>[Signature]</i> ENG'R

CHECKED BY			
ARCH.	CIVIL & STRUCT.	MECH.	ELECT.
	<i>[Signature]</i>		

PROJECT NO. MM 6184-5

DETAILS

MINE DRAINAGE TREATMENT  
SANDY RUN LUZERNE CO., PENNSYLVANIA  
BUCK MT. CARBON CO., PENNSYLVANIA  
SWAMP CREEK ELK CO., PENNSYLVANIA

BUREAU OF ENGINEERING & CONSTRUCTION  
DEPARTMENT OF PROPERTY & SUPPLIES

DATE	COMMONWEALTH OF PENNSYLVANIA	SHEET
SEPT. 1967	RAYMOND P. SHAFER	NO. 7
SCALE	DEPT. OF PROPERTY & SUPPLIES	OF 7
AS NOTED	PERRIN C. HAMILTON	
	HARRISBURG, PENNSYLVANIA	



ALL DIMENSIONS AND MEASUREMENTS SHALL BE CHECKED AND VERIFIED BY THE CONTRACTOR AT THE SITE