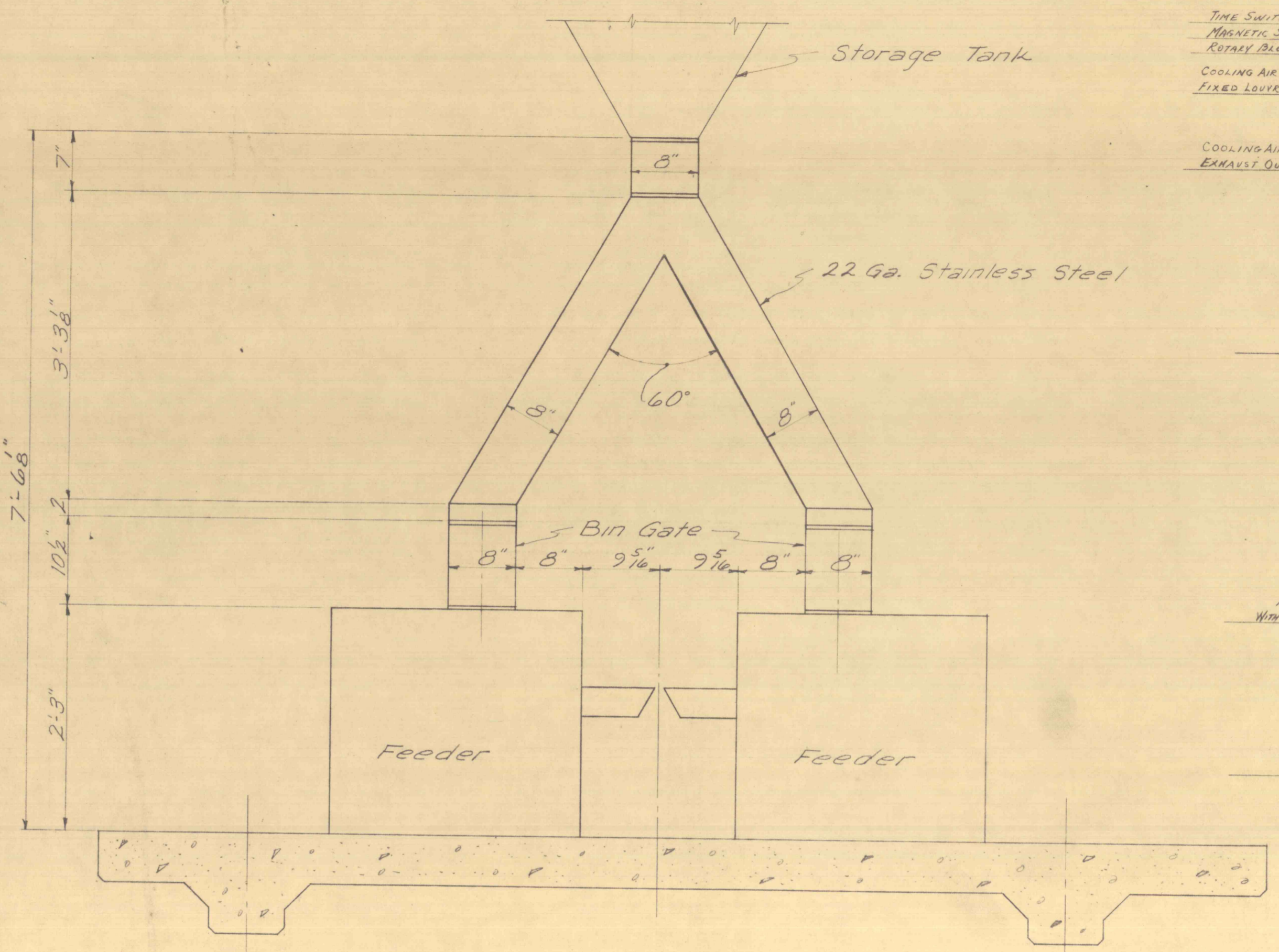


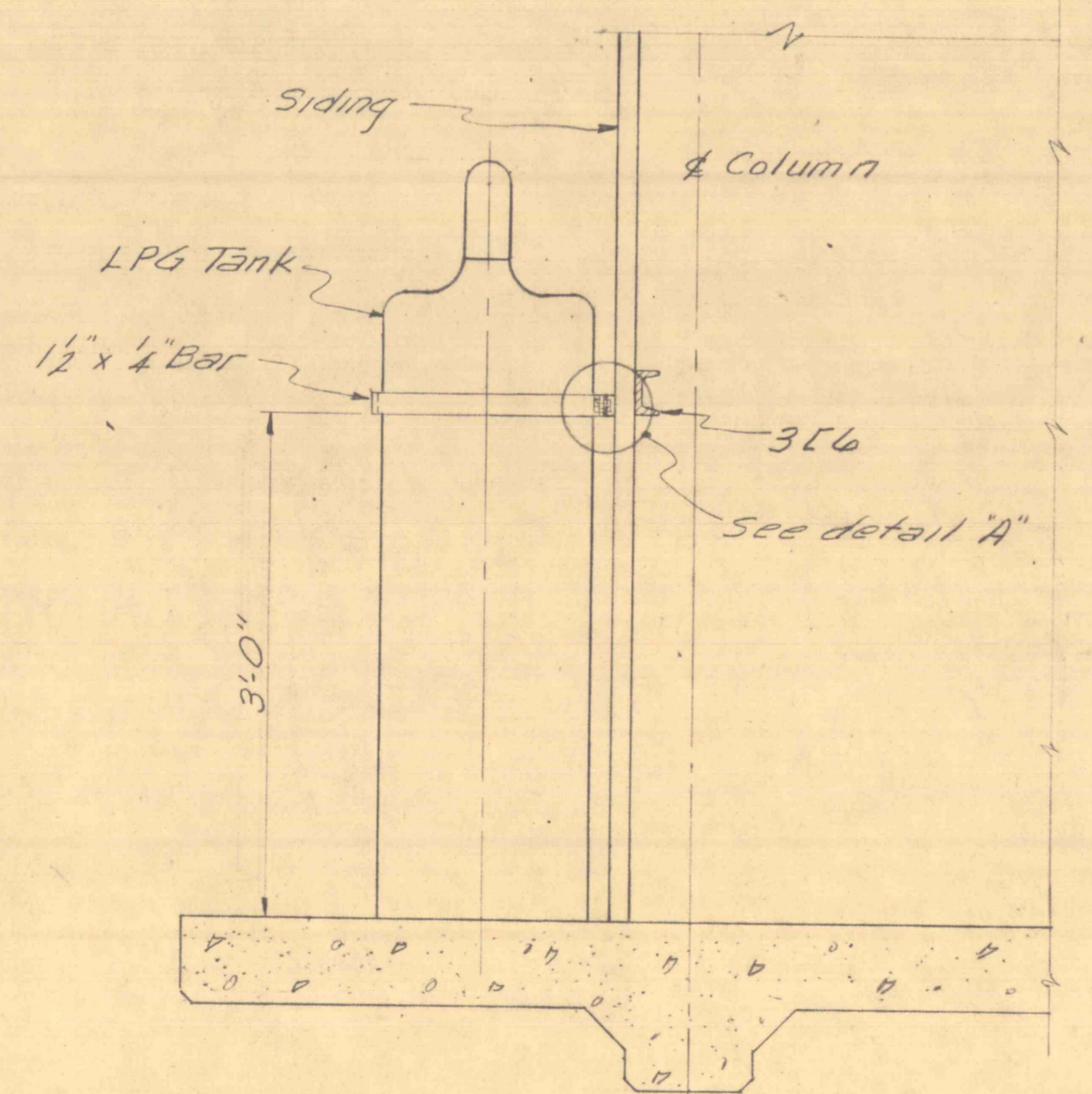
EQUIPMENT LAYOUT
Scale 1"=1'-0"

NOTES:
For details of door buck see sheet # 7
For detail of siding attachment to column see sheet # 4

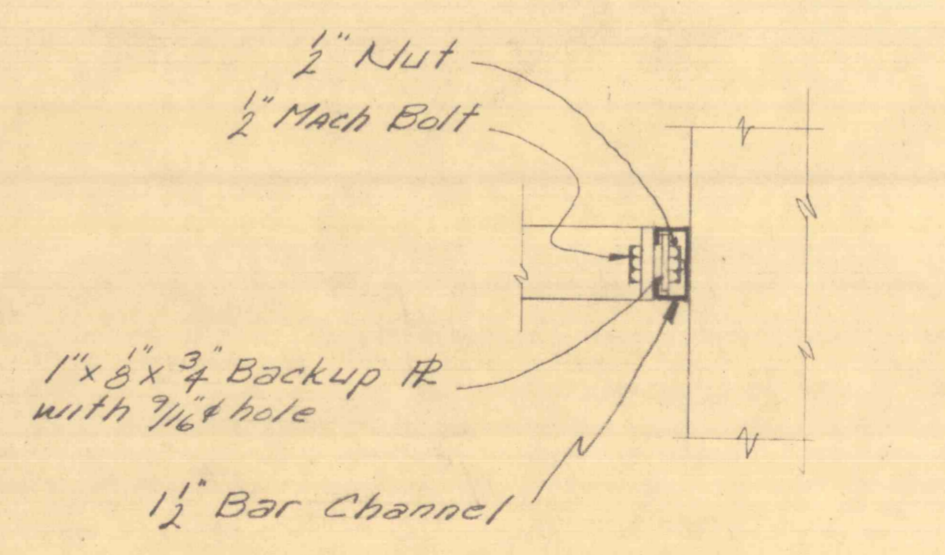
Install L.P.G. tanks to clear exhaust from emerg. gen.



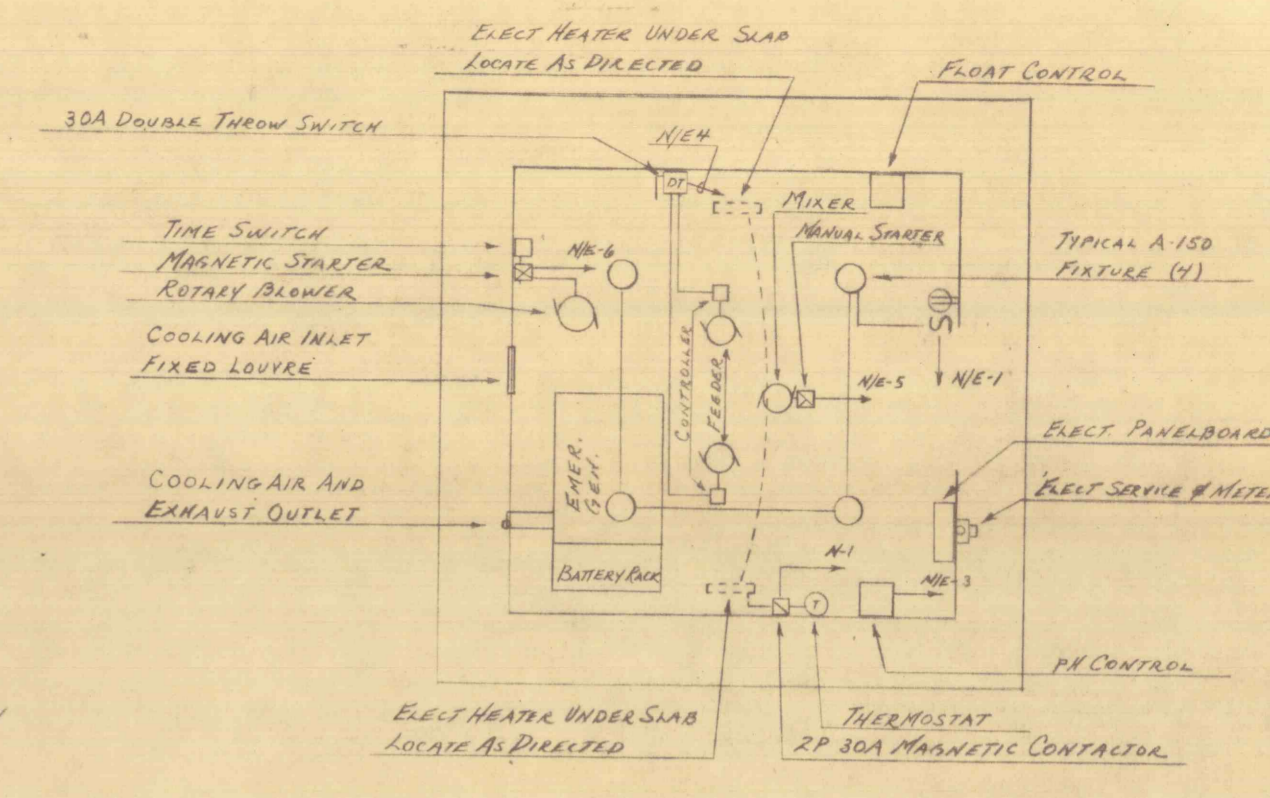
DETAIL OF LIME FEED
Scale: 1"=1'-0"



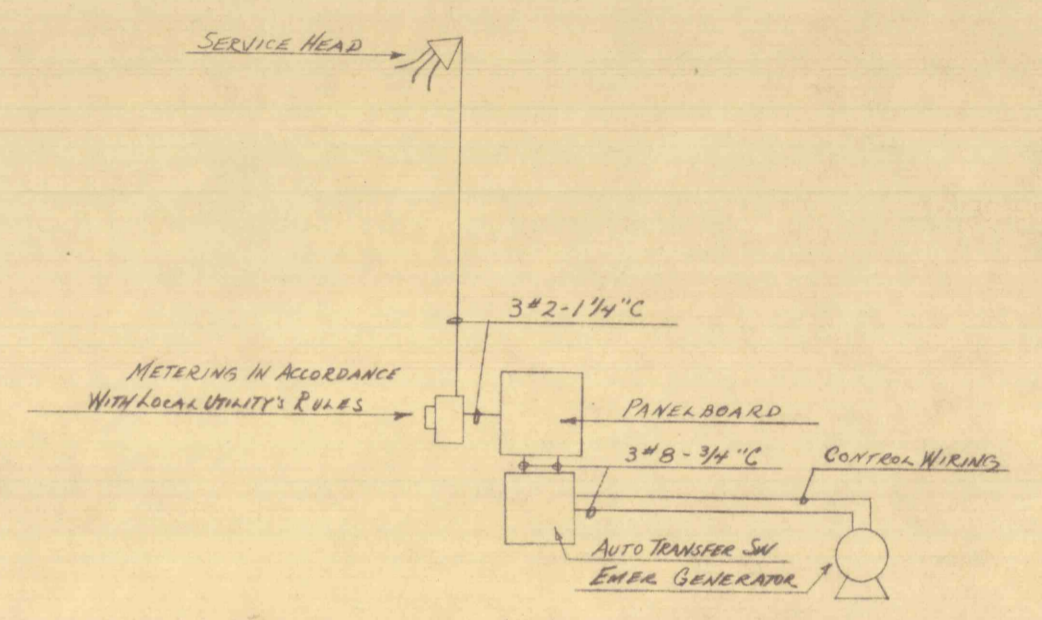
SECTION "A-A"
Scale 1"=1'-0"



DETAIL "A"
Scale 3"=1'-0"



ELECTRICAL FLOOR PLAN
Scale 1/4"=1'-0"



ELECTRICAL RISER DIAGRAM
NOT TO SCALE

ELECTRICAL PANELBOARD SCHEDULE

SECTION	CIR. NO.	RATING	POLES	FEEDINGS	WIRING
SECTION N/E 10 3W 120/240V 50A MAIN LUGS	1	20	1	LIGHTS & RECEPTACLE	2#12-34°C
	2	20	1	FEEDER	2#12-34°C
	3	20	1	pH CONTROL	2#12-34°C
	4	20	1	SPARE	
	5	20	2	MIXER	2#12-34°C
	6	30	2	ROTARY BLOWER	2#12-34°C
SECTION N 14 3W 120/240V 100A MAIN BREAKER	1	40	2	ELECTRIC HEATERS	2#8-34°C
	2	50	2	AUTO TRANSFER SWITCH	3#8-34°C
	3-4	50	2	SPACES	
	NOTE: SECTION N/E FED FROM AUTOMATIC TRANSFER SWITCH.				

REVISIONS			
SYMBOL	CORRECTIONS	DATE	BY
APPROVALS			
APPROVED	<i>[Signature]</i>		
DIRECTOR	BUREAU OF ENGINEERING & CONSTRUCTION		
APPROVED	<i>[Signature]</i>		
SUPERVISING	ENGINEER-BUREAU OF ENGINEERING & CONSTRUCTION		
APPROVED	<i>[Signature]</i>		
FOR DEPT. OF MINES & MINERALS SECY.			
SUBMITTED BY	<i>[Signature]</i>		
	ENG'R		
CHECKED BY			
ARCH.	CIVIL & STRUCT.	MECH.	ELECT.
	<i>[Signature]</i>		<i>[Signature]</i> 7/29/67

PROJECT NO. M.M. 6184 - 5

EQUIPMENT LAYOUT
MINE DRAINAGE TREATMENT
SANDY RUN LUZERNE CO., PENNSYLVANIA
BUCK MT. CARBON CO., PENNSYLVANIA
SWAMP CREEK ELK CO., PENNSYLVANIA

BUREAU OF ENGINEERING & CONSTRUCTION
DEPARTMENT OF PROPERTY & SUPPLIES

DATE	COMMONWEALTH OF PENNSYLVANIA	SHEET
SEPT. 1967	RAYMOND P. SHAFER	NO. 6
SCALE AS NOTED	DEPT. OF PROPERTY & SUPPLIES	OF 6
	PERRIN C. HAMILTON	7
	HARRISBURG, PENNSYLVANIA	



ALL DIMENSIONS AND MEASUREMENTS SHALL BE CHECKED AND VERIFIED BY THE CONTRACTOR AT THE SITE