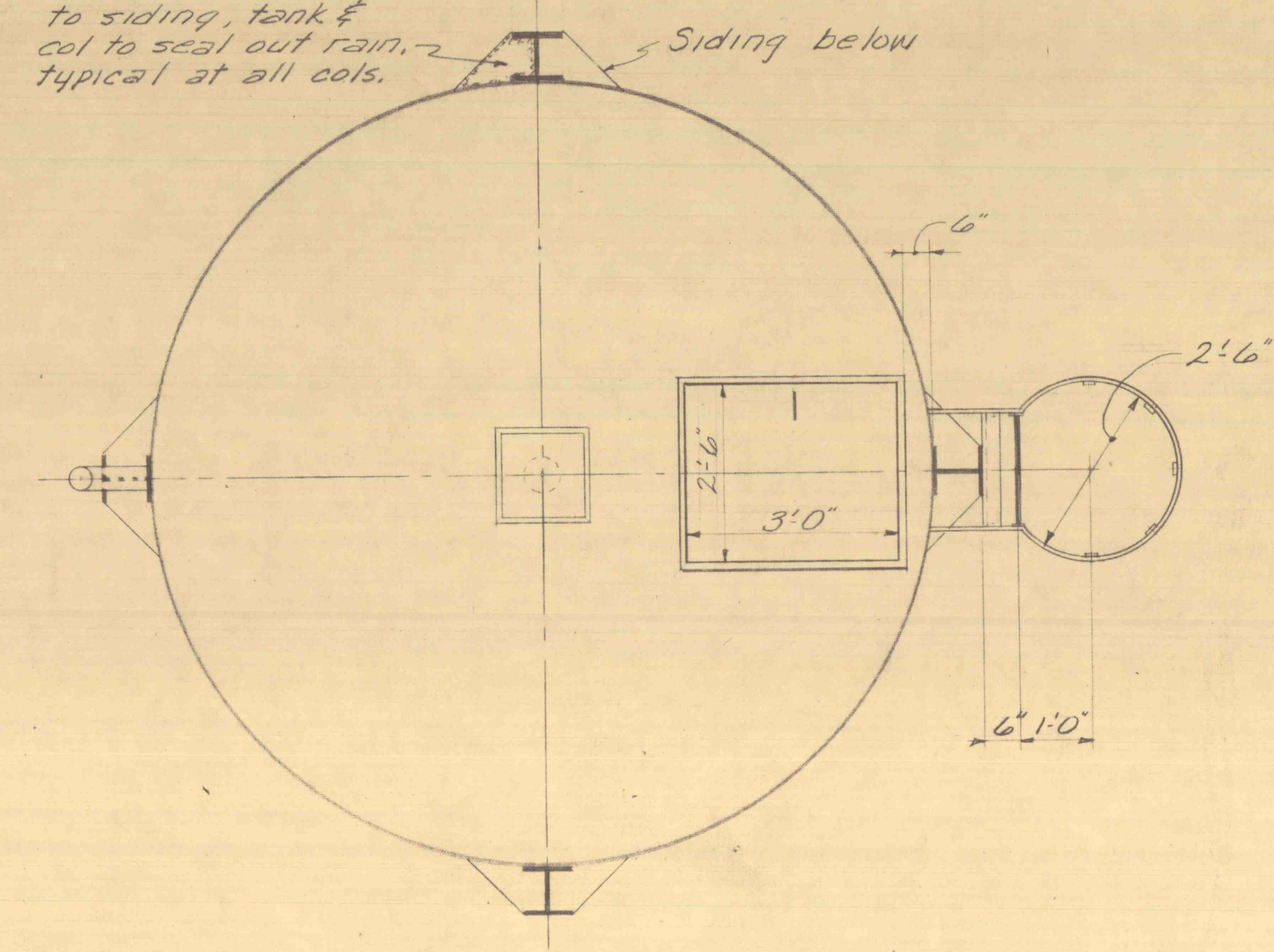


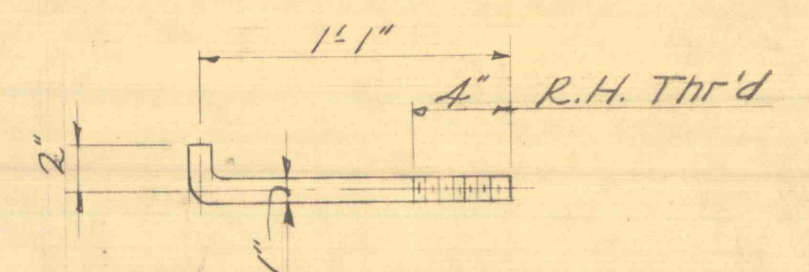
ELEVATION
Scale 1/2" = 10'

ALL DIMENSIONS AND MEASUREMENTS SHALL BE CHECKED AND VERIFIED BY THE CONTRACTOR AT THE SITE

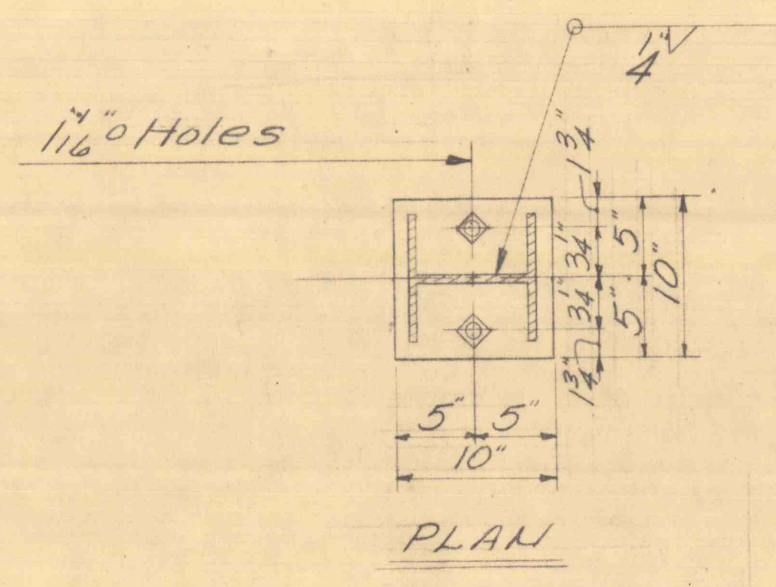
Weld 1/2" steel B to siding, tank & col to seal out rain. Typical at all cols.



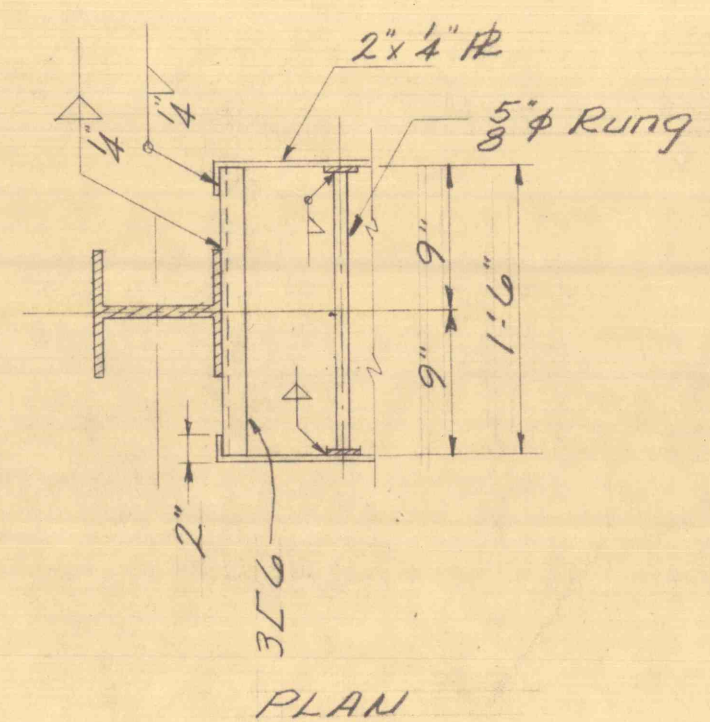
PLAN
Scale 1/2" = 10'



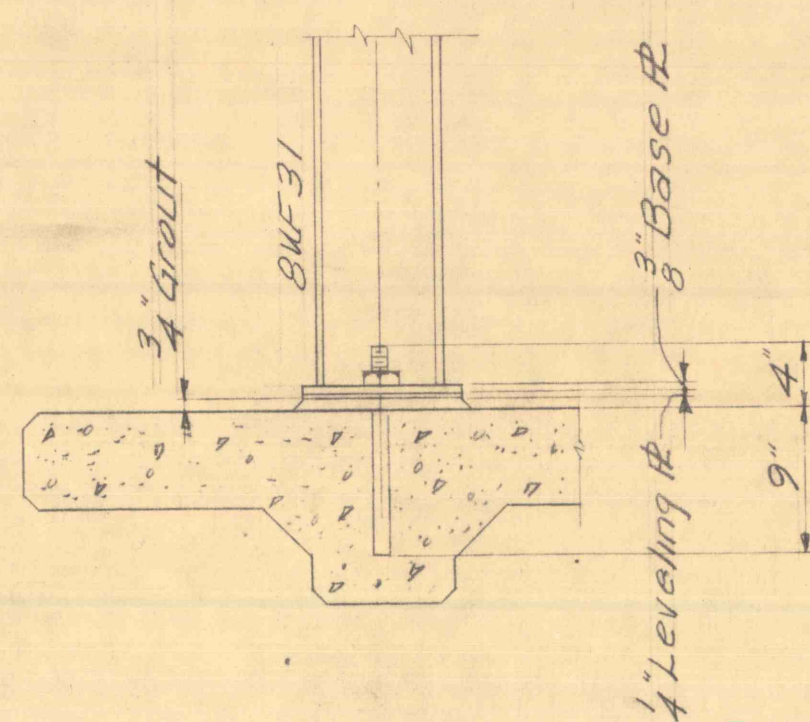
ANCHOR BOLT
B-Required
Scale 1/2" = 10'



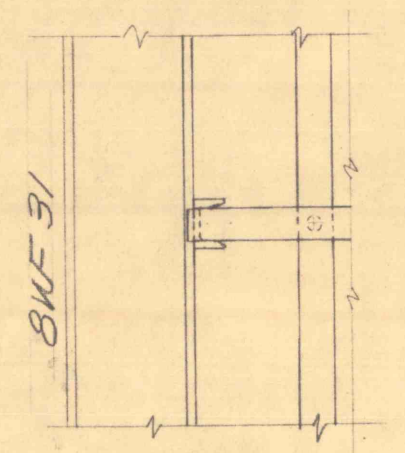
PLAN



PLAN



ELEVATION
DETAIL "A"
Scale 1" = 10'



ELEVATION
DETAIL "B"
DETAIL "C" Similar
Scale 1" = 10'

REVISIONS			
SYMBOL	CORRECTIONS		
APPROVALS			
APPROVED	<i>[Signature]</i>		
DIRECTOR - BUREAU OF ENGINEERING & CONSTRUCTION			
APPROVED	<i>[Signature]</i>		
SUPERVISING ENGINEER - BUREAU OF ENGINEERING & CONSTRUCTION			
APPROVED	<i>[Signature]</i>		
FOR DEPT. OF MINES & MINERALS SEC'Y.			
SUBMITTED BY	<i>[Signature]</i>	ENG'R	
CHECKED BY			
ARCH.	CIVIL & STRUCT.	MECH.	ELECT.
	<i>[Signature]</i>		
PROJECT NO. M.M. 6184 - 5			
STORAGE TANK			
MINE DRAINAGE TREATMENT			
SANDY RUN LUZERNE CO., PENNSYLVANIA			
BUCK MT. CARBON CO., PENNSYLVANIA			
SWAMP CREEK ELK CO., PENNSYLVANIA			
BUREAU OF ENGINEERING & CONSTRUCTION			
DEPARTMENT OF PROPERTY & SUPPLIES			
DATE	COMMONWEALTH OF PENNSYLVANIA	GOVERNOR	SHEET NO.
SEPT. 1967	RAYMOND P. SHAFER		4
SCALE	DEPT. OF PROPERTY & SUPPLIES		OF
AS NOTED	PERRIN C. HAMILTON	SECRETARY	7
	HARRISBURG, PENNSYLVANIA		

