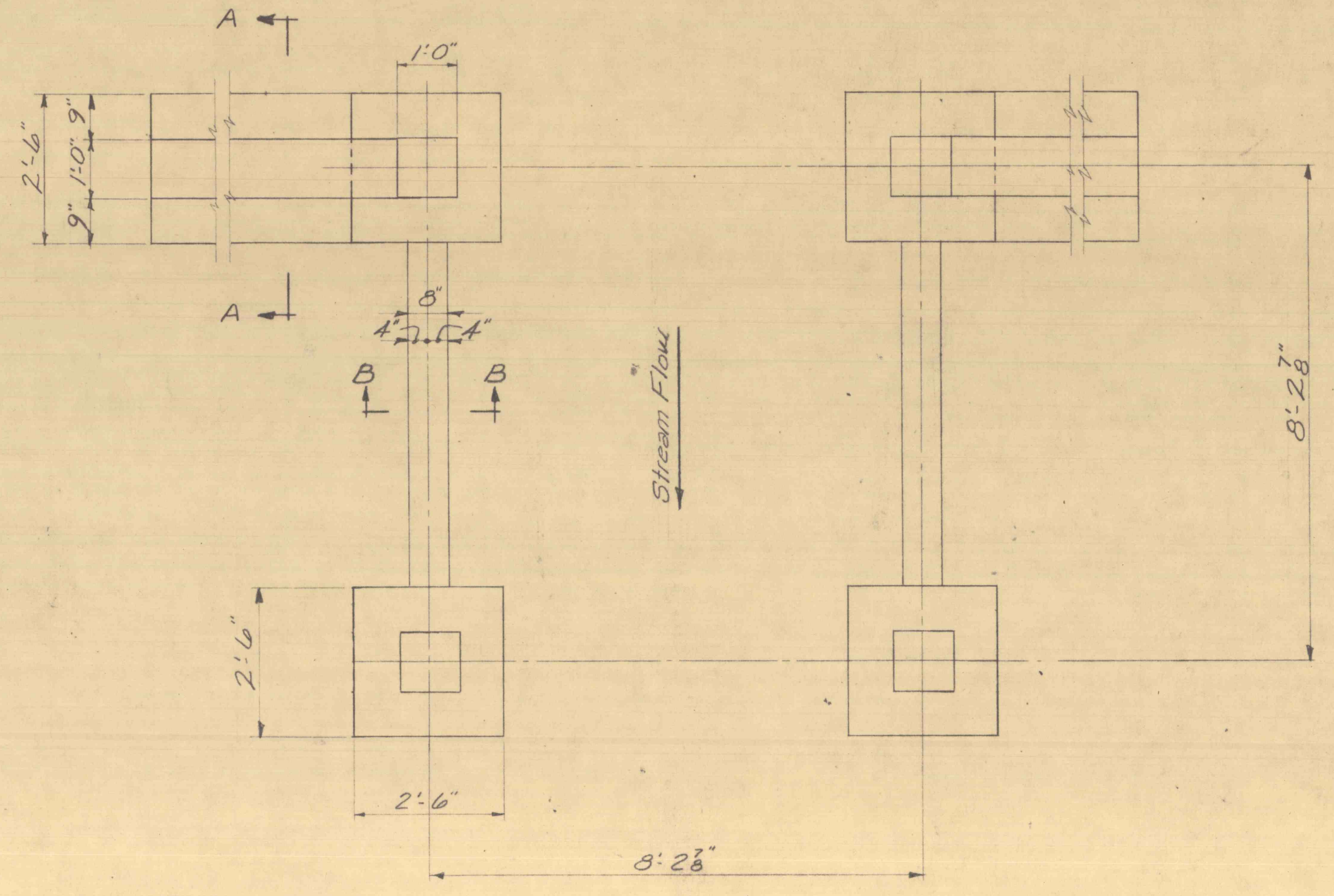
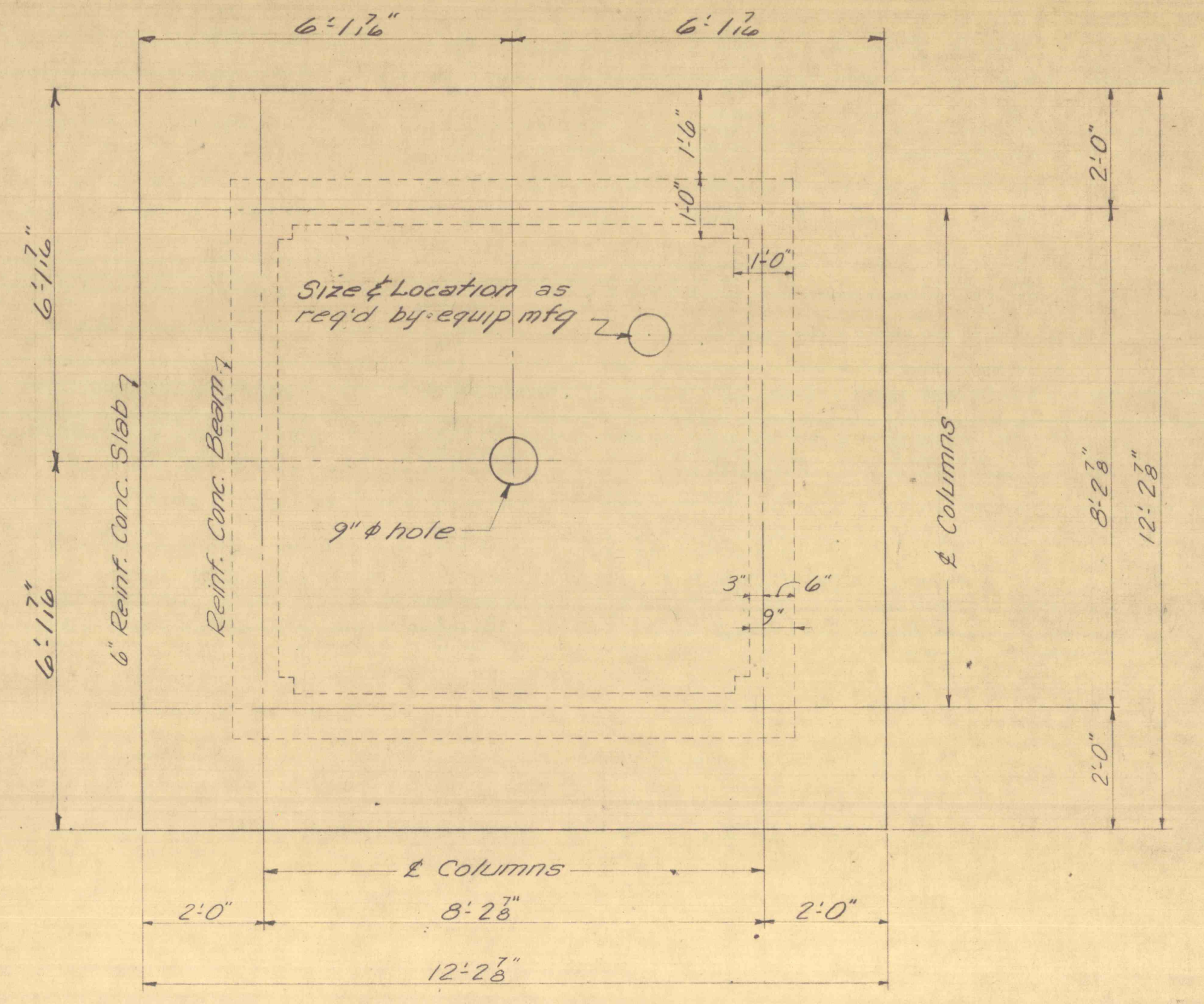


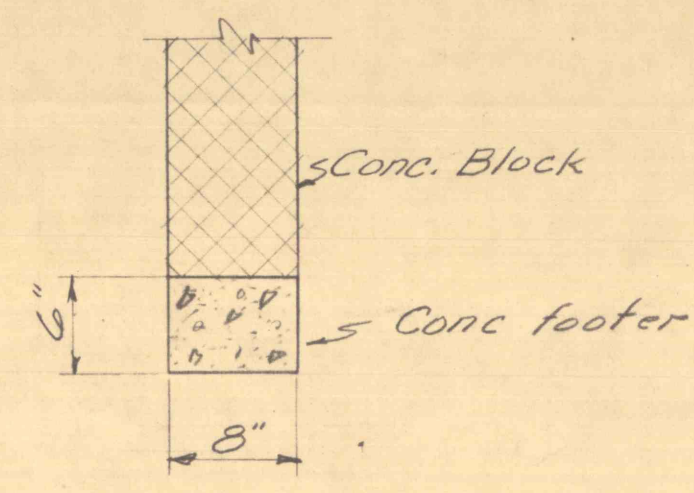
SECTION "A-A"
Scale 1"=1'-0"



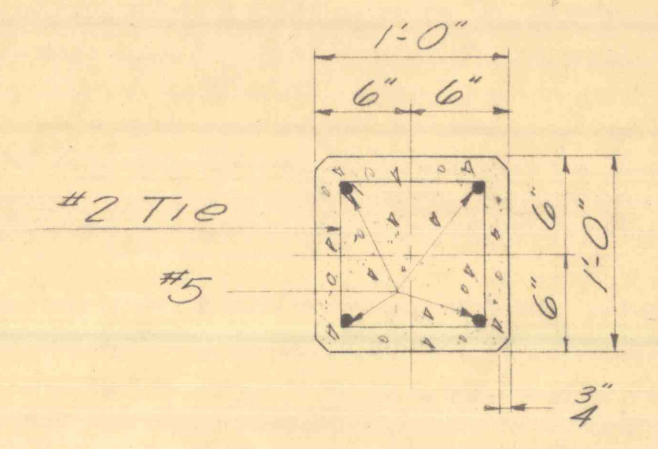
FOUNDATION PLAN
Scale: 1/2"=1'-0"



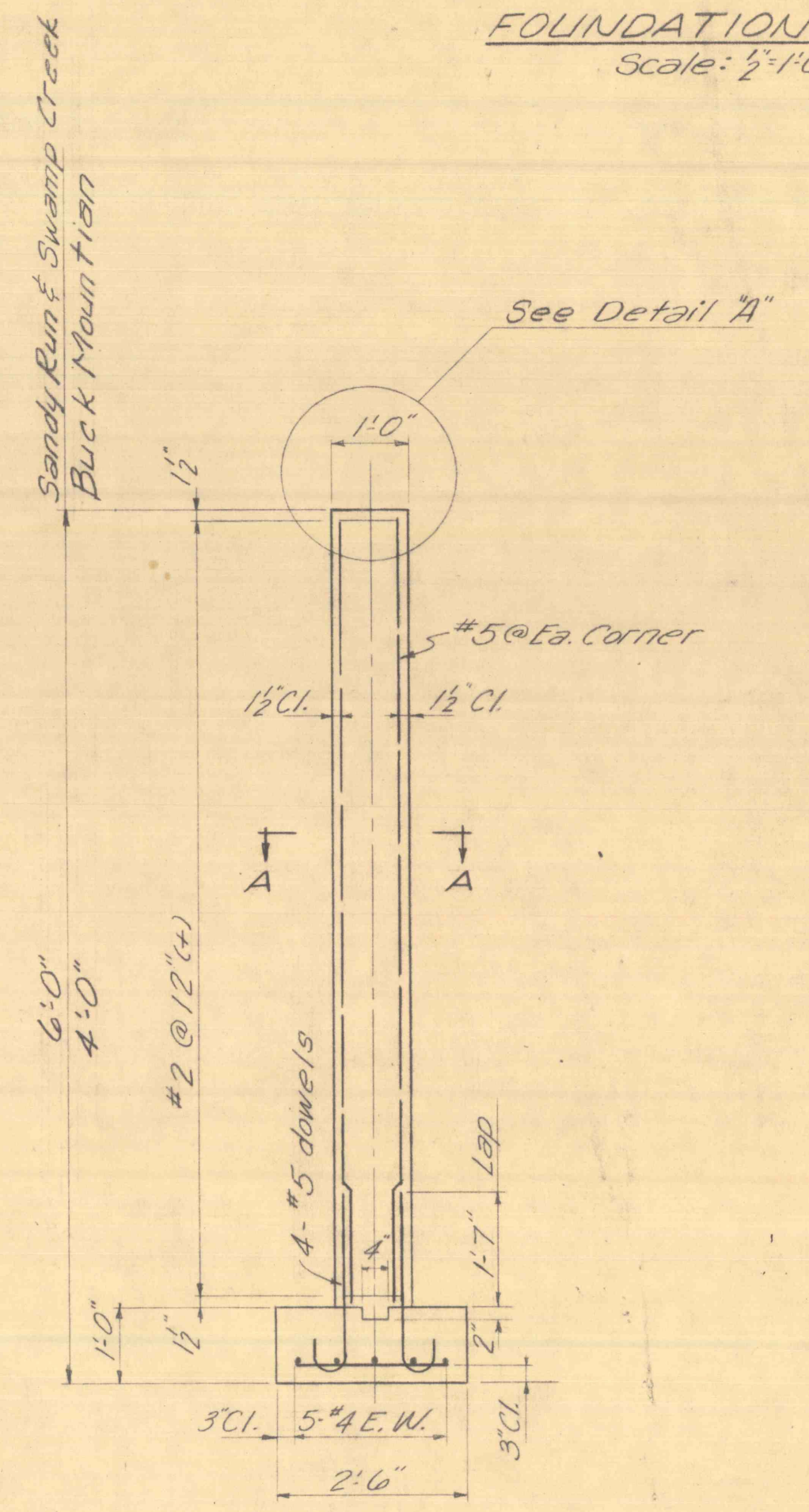
SLAB & FRAMING PLAN
Scale: 1/2"=1'-0"



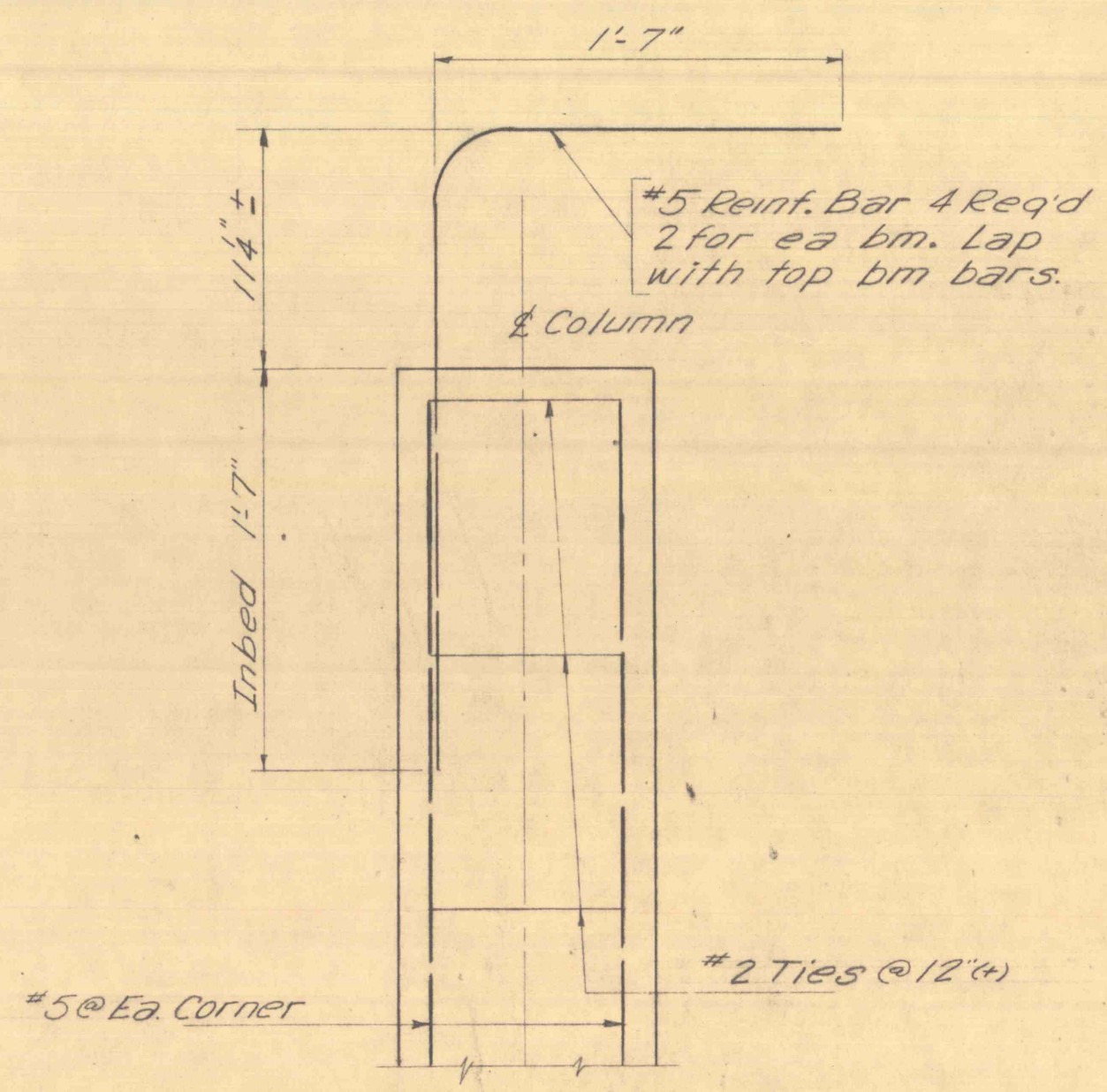
SECTION "B-B"
Scale 1"=1'-0"



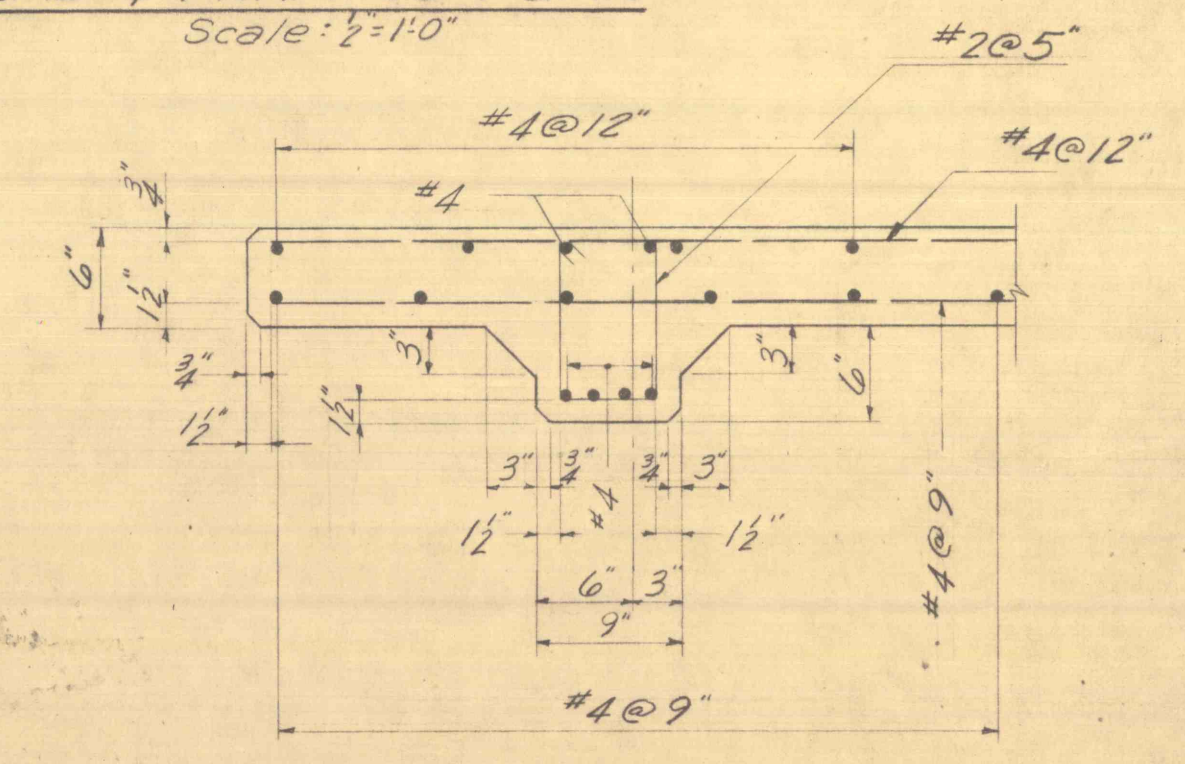
SECTION "A-A"
Scale: 1/2"=1'-0"



DETAIL - COLUMN & FTG.
Scale: 1/2"=1'-0"
Overflow wall & block wall, not shown



DETAIL "A"
Scale: 1 1/2"=1'-0"



SECTION "B-B"
Scale: 1"=1'-0"

REVISIONS			
SYMBOL	CORRECTIONS	DATE	BY

APPROVALS			
APPROVED	<i>[Signature]</i>	DIRECTOR-BUREAU OF ENGINEERING & CONSTRUCTION	
APPROVED	<i>[Signature]</i>	ENGINEER-BUREAU OF ENGINEERING & CONSTRUCTION	
APPROVED	<i>[Signature]</i>	FOR DEPT. OF MINES & MINERALS, SEC'S.	
SUBMITTED BY	<i>[Signature]</i>	ENGR	

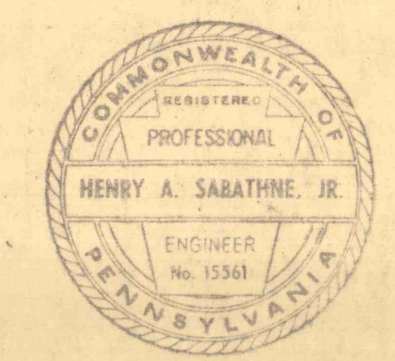
CHECKED BY			
ARCH.	CIVIL & STRUCT.	MECH.	ELECT.
	<i>[Signature]</i>		

PROJECT NO. MM 6184-5

PLANS & DETAILS

MINE DRAINAGE TREATMENT
SANDY RUN LUZERNE CO., PENNSYLVANIA
BUCK MT. CARBON CO., PENNSYLVANIA
SWAMP CREEK ELK CO., PENNSYLVANIA

BUREAU OF ENGINEERING & CONSTRUCTION DEPARTMENT OF PROPERTY & SUPPLIES			
DATE	COMMONWEALTH OF PENNSYLVANIA	GOVERNOR	SHEET NO.
SEPT. 1967	RAYMOND P SHAFER		5
SCALE	DEPT. OF PROPERTY & SUPPLIES	SECRETARY	OF
AS NOTED	PERRIN C HAMILTON		7
	HARRISBURG, PENNSYLVANIA		



ALL DIMENSIONS AND MEASUREMENTS SHALL BE CHECKED AND VERIFIED BY THE CONTRACTOR AT THE SITE