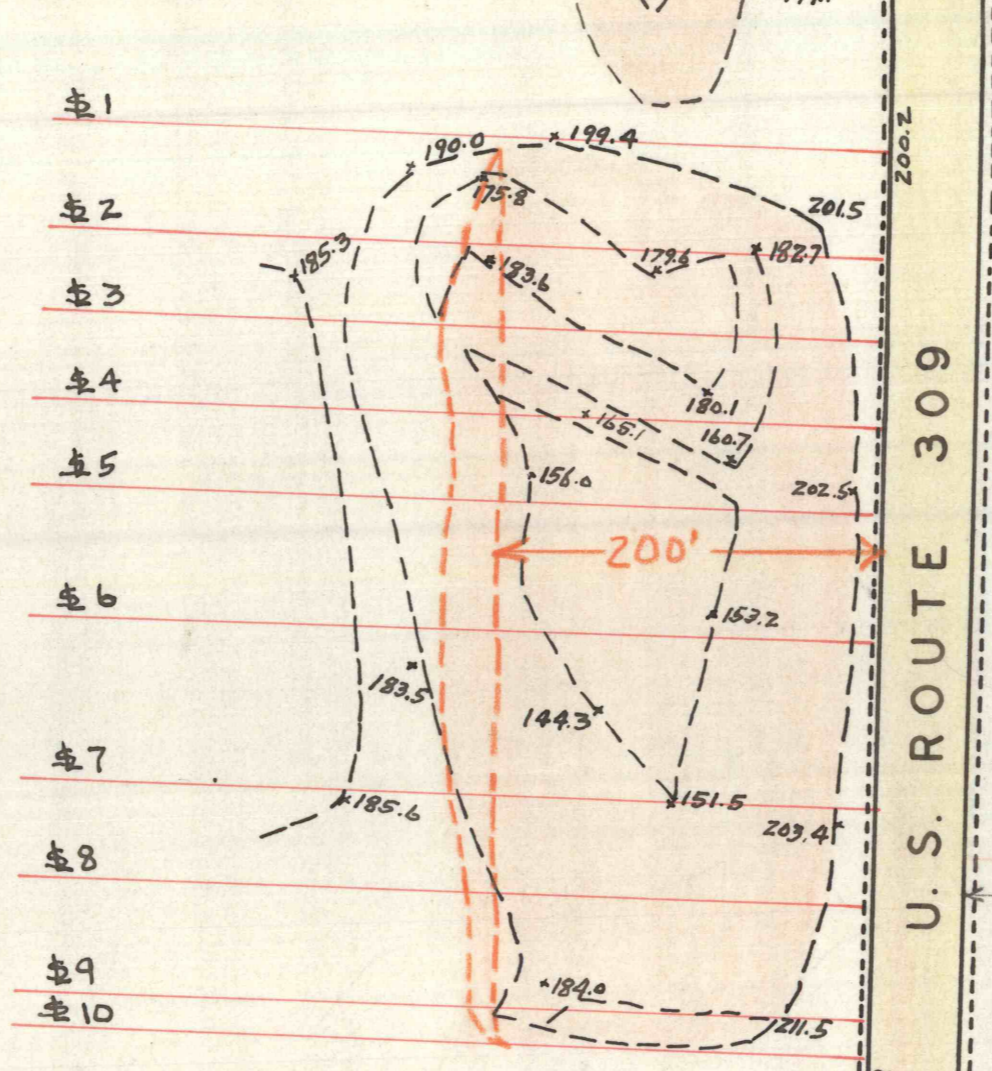


PIT NO. 2 = 185,400 C.Y.

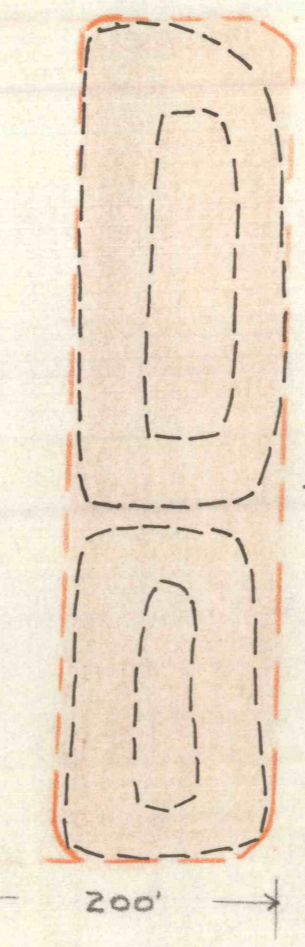
PIT NO. 3 = 232,000 C.Y.

PIT NO. 6 = 15,000 C.Y.

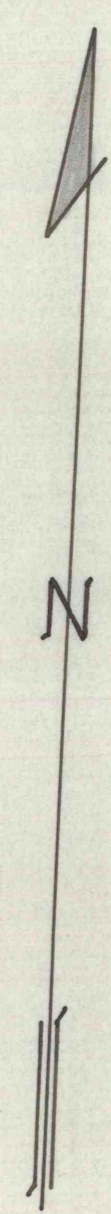
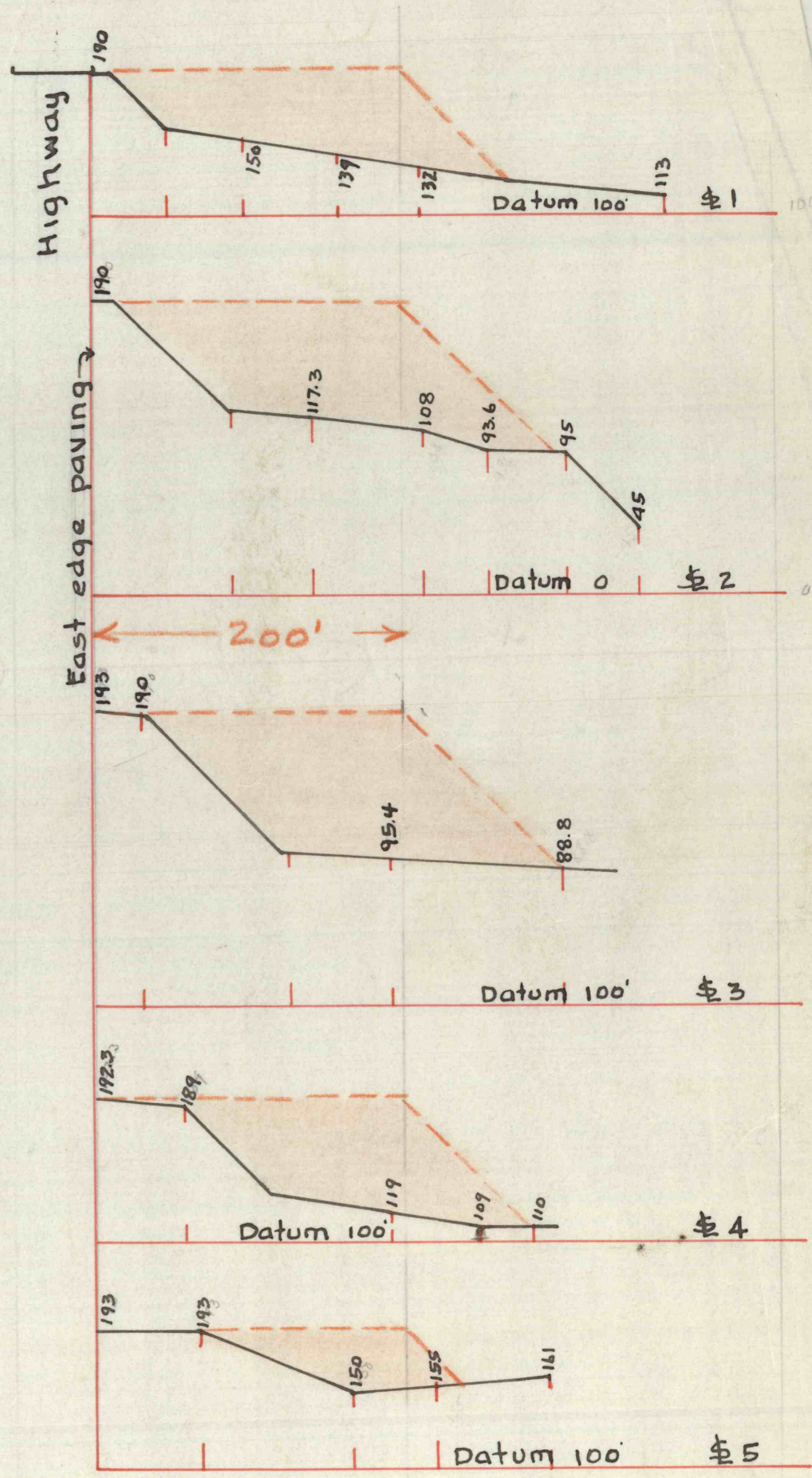
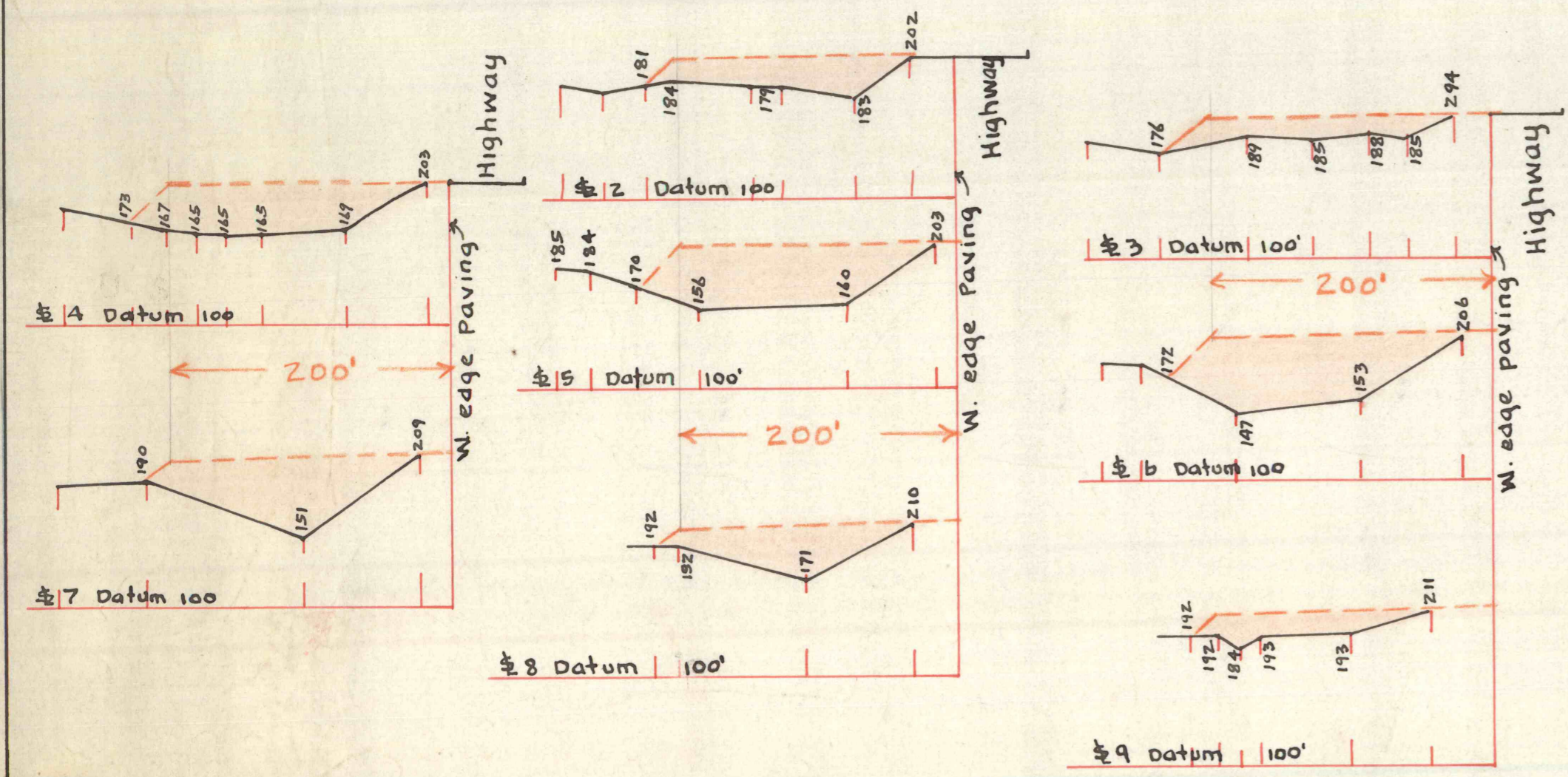
PIT NO. 4 = 1100 C.Y.



PIT NO. 1 = 84,100 C.Y.



PIT NO. 5 = 38,100 C.Y.



PENNSYLVANIA
 DEPARTMENT - MINES & MINERAL INDUSTRIES
 MAP SHOWING PROJECT NO. 18 - BACKFILL AND RESTORATION TO ORIGINAL CONTOURS OF A PORTION OF THE MILNESVILLE STRIPPINGS, LOCATED IN HAZEL TOWNSHIP, LUZERNE COUNTY, ON THE PROPERTIES OF THE MILNESVILLE COAL COMPANY. SCALE - 1"=100'
 CONTAINING APPROX. 12 ACRES
 FILL REQUIRED 552,500 CU.YDS.

G.A. BRECKER, P.E. APPROVED *James J. Shober*
 DEPUTY SECRETARY
 JUNE 21, 1961.