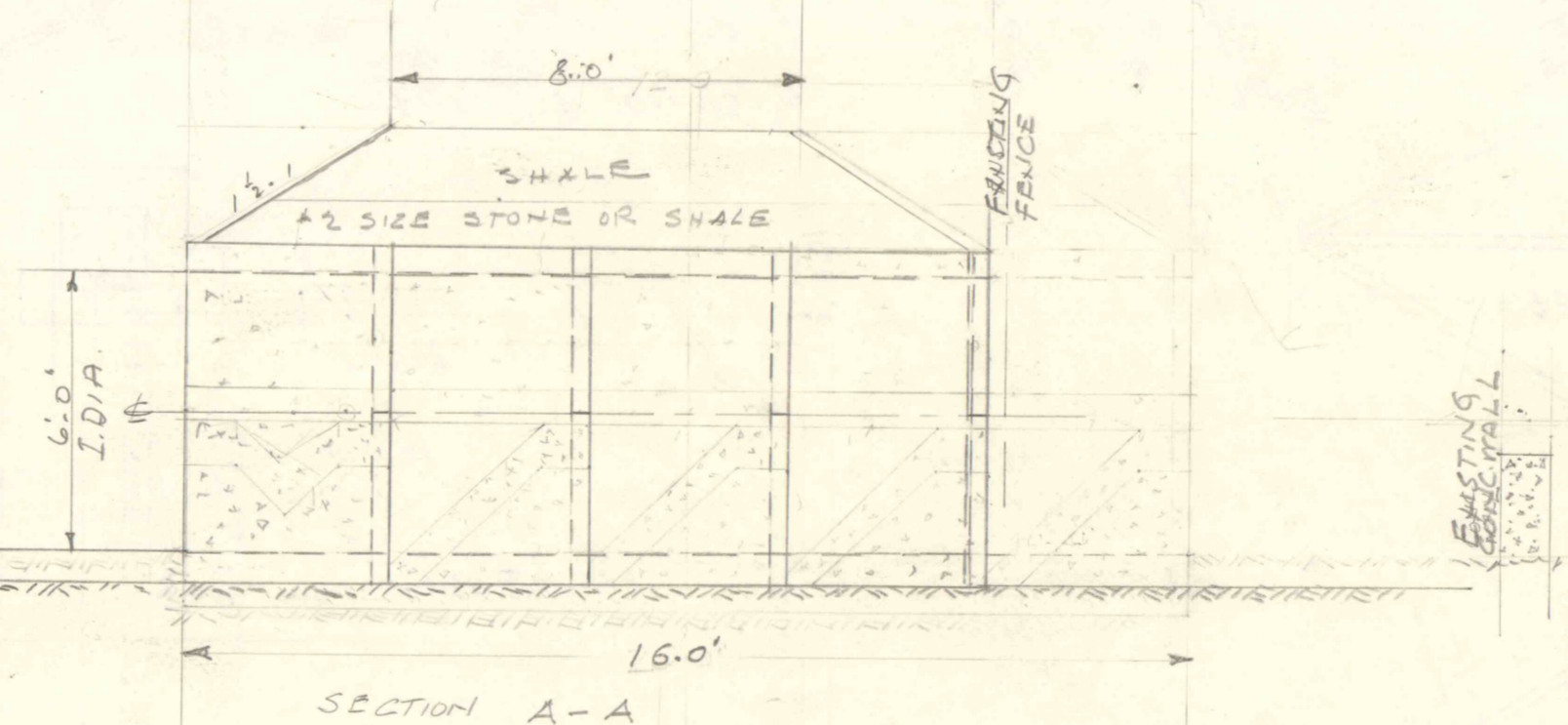


LONGITUDINAL SECTION
THROUGH HALF ROUND C.C. PIPE BRIDGE
LOOKING EAST



PENNSYLVANIA DEPARTMENT
OF ENVIRONMENTAL RESOURCES
BUREAU OF ENGINEERING & CONSTRUCTION

DATE 90

Handwritten notes and signatures on the right side of the page, including a date '3/10/90' and initials 'E.L.M.'.